

Mineral Industry Surveys

For information, contact:

C. Schuyler Anderson, Tin Commodity Specialist
 National Minerals Information Center
 U.S. Geological Survey
 989 National Center
 Reston, VA 20192
 Telephone: (703) 648-4985, Fax: (703) 648-7757
 Email: csanderson@usgs.gov

Robin Kaiser (Data)
 Telephone: (703) 648-7948
 Fax: (703) 648-7975
 Email: rkaiser@usgs.gov

Internet: <https://www.usgs.gov/centers/nmic>

TIN IN MARCH 2019

Domestic reported consumption of primary refined tin in March 2019 was 1,660 metric tons (t), 3% less than the revised consumption in February 2019. Apparent consumption of refined tin in March 2019 was 4,760 t, 18% more than that in February 2019 (table 1).

Prices

The Platts Metals Week average New York dealer price of Grade A tin for March 2019 was \$9.92 per pound, essentially unchanged from the previous month. The average London Metal Exchange cash price of Grade A tin for March 2019 was \$9.72 per pound, essentially unchanged from the previous month (fig. 1, table 2).

U.S. Trade

Total refined tin imports in March 2019 were 3,930 t, a 24% increase from the 3,170 t of imports in February 2019 (table 4). The leading sources of refined tin in March were, in descending order, Indonesia (28%), Malaysia (21%), Peru (16%) and Bolivia (9%). Imports from Indonesia increased by 825 t, or almost quadrupled February imports. Imports from Bolivia decreased by 537 t, or 60% in March.

Update

On June 18, Alphamin Resources Corp. announced the completion of C4 Commissioning of the Bisie tin project processing plant in the North Kivu province of Congo (Kinshasa). The C4 Commissioning involves processing of material, calibration of instruments, process flows, and equipment throughput, and a C4 certificate indicates that a unit was complete and can operate. The final stage of the commissioning process, C5, is achieved when a facility has run at full continuous production for 48 hours. The Bisie project,

which has a capacity of 12,000 t of tin in concentrate per year, was expected to startup by December (International Tin Association Ltd., 2019).

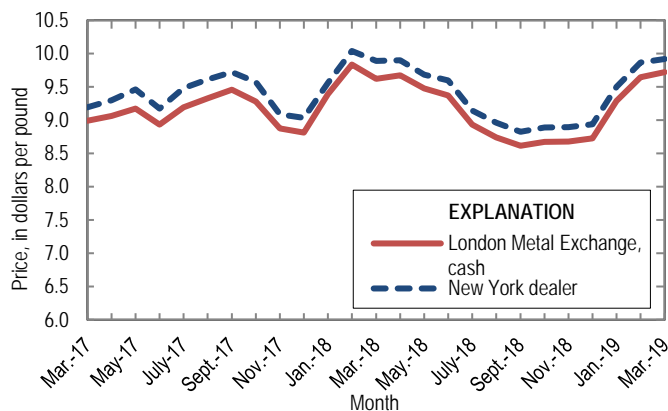


Figure 1. Average monthly prices for Grade A tin from March 2017 through March 2019. Source: Platts Metals Week.

Reference Cited

International Tin Association Ltd., 2019, Alphamin begins final commissioning: Frogmore, United Kingdom, International Tin Association Ltd. news release, June 19. (Accessed June 25, 2019, at <https://www.internationaltin.org/alphamin-final-commissioning/>.)

List services and web feed subscribers are the first to receive notification of USGS minerals information publications and data releases. For information on how to subscribe, go to <https://www.usgs.gov/centers/nmic/minerals-information-publication-list-services>.

TABLE 1
SALIENT TIN STATISTICS¹

(Metric tons, unless otherwise noted)

	2019			
	2018 ^p	February	March	January– March
Production, secondary ^{e, 2}	10,300	900	900	2,660
Consumption, reported:				
Primary	19,800	1,700 ^r	1,660	5,030
Secondary	2,400	184 ^r	197	585
Consumption, apparent ³	46,100	4,020	4,760	13,700
Imports for consumption, refined tin	36,800	3,170	3,930	11,200
Exports, refined tin	962	55	69	169
Stocks at end of period	5,610	5,350 ^r	4,660	4,660
Prices (average cents per pound): ⁴				
Metals Week New York dealer, Grade A	935.87	986.63	991.88	976.13
London Metal Exchange cash	914.31	964.19	972.21	946.37

^eEstimated. ^pPreliminary. ^rRevised.

¹Data are rounded to no more than three significant digits, except prices.

²Includes tin recovered from alloys and tinplate. The detinning of tinplate (coated steel) yields only a small part of the total.

³Defined as secondary production plus imports minus exports.

⁴Source: Platts Metals Week.

TABLE 2
AVERAGE TIN PRICES

(Cents per pound)

Period	Metals Week New York dealer, Grade A	London Metal Exchange cash
2018:		
March	988.67	961.75
April	990.00	967.44
May	968.22	947.44
June	959.63	936.76
July	914.44	893.09
August	895.89	873.96
September	882.38	861.35
October	889.00	867.37
November	889.38	867.72
December	893.57	872.33
January–December	935.87	914.31
2019:		
January	949.88	928.55
February	986.63	964.19
March	991.88	972.21
January–March	976.13	946.37

Source: Platts Metals Week.

TABLE 3
TINPLATE PRODUCTION AND SHIPMENTS IN THE UNITED STATES¹

(Metric tons, unless otherwise noted)

Period	Tinplate (all forms)			
	Production			Shipments ² (gross weight)
	Gross weight	Tin content	Tin per metric ton of plate (kilograms)	
2018:				
March	40,100	382	9.5	72,700
April	43,100	388	9.0	76,500
May	42,400	388	9.2	83,500
June	43,800	385	8.8	83,800
July	41,900	387	9.3	80,100
August	44,800	387	8.6	91,600
September	39,800	381	9.6	79,000
October	45,400	383	8.5	94,800
November	39,800	386	9.7	88,000
December	40,900	391	9.5	57,900
January–December	500,000	4,610	9.3	949,000
2019:				
January	30,600	399	13.0	76,100
February	45,100	432	10.0	72,800
March	41,900	366	8.7	72,600 *
January–March	118,000	1,200	9.7	222,000 *

¹Data are rounded to no more than three significant digits; may not add to totals shown.

²Source: American Iron and Steel Institute monthly publication.

*Corrections posted July 17, 2019.

TABLE 4
U.S. TIN IMPORTS FOR CONSUMPTION AND EXPORTS¹

(Metric tons, gross weight)

Country/locality, or product	2018 ^p	2019		
		February	March	January – March
Imports:				
Refined tin:				
Belgium	112	40	24	84
Bolivia	6,310	902	365	1,860
Brazil	2,740	160	230	647
China	1,310	191	228	439
Estonia	--	80	80	160
Indonesia	10,500	285	1,110	1,780
Malaysia	7,590	830	837	2,840
Peru	6,660	550	612	2,360
Poland	731	45	112	269
Russia	--	--	261	542
Thailand	422	71	45	136
Other	400	20	26	96
Total	36,800	3,170	3,930	11,200
Other:				
Alloys	1,440	56	107	279
Bars, rods, profiles, and wire	1,460	121	112	360
Flakes and powders	189	9	4	23
Foil	92	1	1	1
Plates, sheets, strip	89	6	2	14
Tubes, pipes, and tube and pipe fittings	143	1	22	36
Waste and scrap	47,700	2,660	2,670	9,160
Miscellaneous ³	1,060	97	66	230
Exports:				
Refined tin	962	55	69	169
Alloys	885	67	112	210

-- Zero.

¹Data are rounded to no more than three significant digits; may not add to totals shown.

²Includes other articles of tin not elsewhere specified or included (HTS code 8007.00.5000).

Source: U.S. Census Bureau.

TABLE 5
REPORTED CONSUMPTION OF TIN IN THE UNITED STATES, BY FINISHED PRODUCT¹

(Metric tons of contained tin)

Product	2019								
	2018 ^p	February			March			January– March	
		Primary	Secondary	Total	Primary	Secondary	Total		
Alloys (miscellaneous) ²	2,240	172	--	172	169	--	169	511	
Babbitt	231	14	W	14	15	W	15	49	
Bronze and brass	1,720	73 ^r	67 ^r	141 ^r	65	81	146	434	
Chemicals	3,840	335	--	335	325	W	325	1,000	
Solder	3,180	175	W	175	192	W	192	874	
Tinning	442	23	--	23	22	--	22	69	
Tinplate ³	4,660	432	W	432	390	W	390	1,230	
Other ⁴	5,900	477	118	594	478	116	594	1,440	
Total reported	22,200	1,700	184	1,890	1,660	197	1,850	5,610	

^pPreliminary. ^rRevised. W Withheld to avoid disclosing company proprietary data; included with "Other." -- Zero.

¹Data are rounded to no more than three significant digits; may not add to totals shown.

²Includesterne metal.

³Includes secondary pig tin and tin components of tinplating chemical solutions.

⁴Includes britannia metal, collapsible tubes and foil, jewelers' metal, pewter, tin powder, type metal and white metal.