



U.S. Bureau of Mines



MINERAL INDUSTRY SURVEYS

810 7th Street, NW

Washington, DC 20241

For Information call: Iron and Steel Scrap, Monthly
Raymond E. Brown, Commodity Specialist (202) 501-9427
Cindy S. Liu, Statistical Data (202) 501-9520
Hank Sattlethight, Trade and Statistical Data (202) 501-9503
For MINES-DATA computer bulletin board call:
(202) 501-0373 (2400,N,8,1) for computer access
(202) 501-0406 for technical assistance
For MINES Faxback call:
(412) 892-4088

IRON AND STEEL SCRAP IN MARCH 1993

Returns from 65% of reporting consumers that manufacture pig iron, and raw steel and castings, representing 77% of total scrap consumption by that sector, indicated that consumption of iron and steel scrap on a daily average basis in March 1993 was down 3% compared to that in February 1993, according to the U.S. Bureau of Mines. Compared with February 1993 data, daily average production was up 5%, net receipts fell 4%, and stocks at the end of the month rose 3%.

On a daily average basis for manufacturers of pig iron, and raw steel and castings, pig iron production fell 2% from February 1993, and consumption was down nearly 6% in March 1993. Stocks of pig iron at month's end rose 4%, compared with those at the end of February 1993.

Exports of ferrous scrap for the month of February 1993 rose 19%, compared with that in January 1993. The Republic of Korea was the principal country of destination, accounting for 48% of the total exports in February 1993, followed by Canada with 16%, and Turkey with 14%.

Table 8 shows that, based on quantity, Boston, MA, was the leading customs districts for exports in February 1993, accounting for 19% of total exports, followed by Philadelphia, PA, and New York, NY, each with 12%. Pembina, ND, was the sole re-exporter, accounting for 100% of re-exporting activity.

Table 12 reveals that, on a quantity basis, Detroit, MI, was the leading customs district for imports in February 1993, accounting for 32% of the total imports, followed by New Orleans, LA, with 26%, and Seattle, WA, with 17%.

Prepared by the Branch of Metals and Branch of Data Collection and Coordination, May 28, 1993.

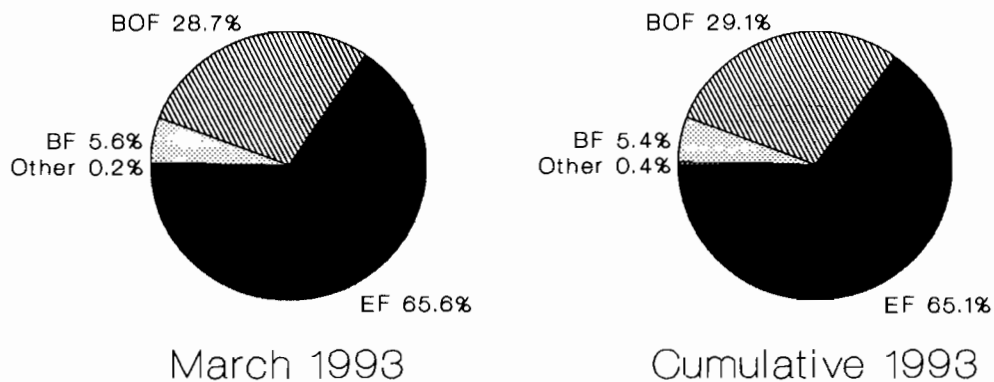


**James Boyd
Memorial Library**

According to the American Iron and Steel Institute, domestic raw steel production in March 1993 amounted to 7,391,000 metric tons, up 8% compared with 6,829,000 metric tons in February 1993 and up 1% from 7,296,000 metric tons in March 1992. Year-to-date production through March 1993 was 21,445,000 metric tons, up nearly 2% compared with 21,073,000 metric tons for the same period 1 year ago. The electric furnace (EF) portion of raw steel production for March 1993 was 39%, up from 38% in February 1993 and up 2% from the same period 1 year ago. The EF share through March 1993 was 38%, up 1% from March 1992. Raw steel capability utilization in March 1993 was 87%, down from 89% in February 1993 but up 3% from March 1992. Capability utilization through March 1993 was 87% in 1993 and 82% in 1992. Continuous cast steel production in the United States accounted for 84% of total raw steel production in March 1993, slightly higher than in February 1992, and was up from 77% in March 1992. Through March, continuous cast steel production represented 85% of total steel production in 1993, compared to 77% in 1992.

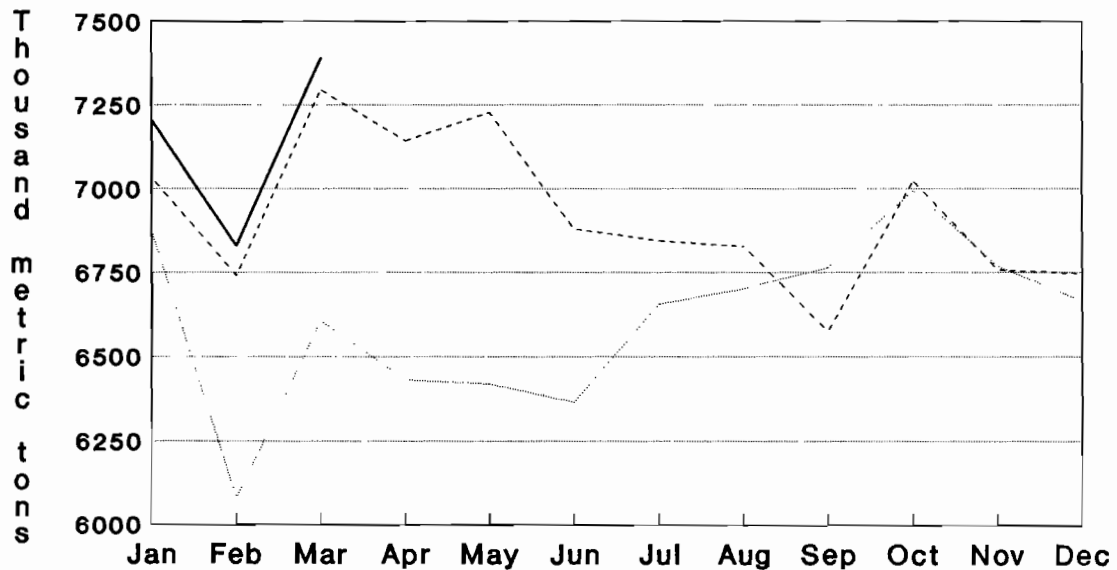
An internal evaluation indicates that ferrous scrap consumption by electric furnace manufacturers of raw steel through March 1993 was understated by 260,000 metric tons. Estimated electric furnace scrap consumption for January equaled reported consumption. The understated quantity for March equaled 140,000 metric tons (preliminary) compared with 120,000 metric tons in February (revised).

Iron and Steel Scrap Consumption Breakdown in %, by Furnace Type^{1/ 2/}

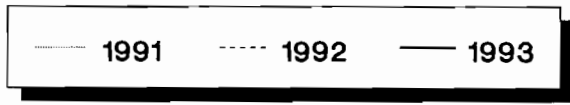


**1/Includes only manufacturers of raw steel.
2/Data may not add to 100% due to independent rounding**

U. S. Raw Steel Production



Source: American Iron and Steel Institute



Monthly and Cumulative totals for raw steel production in the United States are shown below, as reported by the American Iron and Steel Institute. All weights are presented in thousand metric tons¹.

Month	1991		1992		1993	
	Monthly	YTD	Monthly	YTD	Monthly	YTD
January	6,874	6,874	7,035	7,035	7,205	7,205
February	6,082	12,956	6,742	13,776	6,829	14,053
March	6,607	19,476	7,296	21,073	7,391	21,445
April	6,431	25,909	7,144	28,218	--	--
May	6,419	32,323	7,228	35,447	--	--
June	6,366	38,689	6,880	42,328	--	--
July	6,657	45,307	6,845	49,168	--	--
August	6,701	52,012	6,828	55,998	--	--
September	6,765	58,777	6,576	62,576	--	--
October	6,995	65,803	7,023	69,601	--	--
November	6,769	72,540	6,758	76,349	--	--
December	6,665	79,738	6,747	83,099	--	--

¹Monthly raw steel figures may not add to cumulative totals shown.

Monthly and Cumulative rates for both raw steel capability utilization and continuous cast steel production are listed below, by percentage, as reported by the American Iron and Steel Institute

Raw Steel Capability Utilization						
Month	1991		1992		1993	
	Month	YTD	Monthly	YTD	Month	YTD
January	74.6%	74.6%	80.5%	80.5%	84.8%	84.8%
February	73.1%	73.9%	82.4%	81.4%	89.0%	86.9%
March	71.7%	72.8%	83.5%	82.1%	87.0%	87.0%
April	72.5%	72.7%	85.3%	82.9%	--	--
May	70.0%	72.2%	83.5%	83.0%	--	--
June	71.7%	72.1%	82.1%	82.9%	--	--
July	74.8%	72.4%	78.9%	82.3%	--	--
August	75.2%	72.8%	78.7%	81.8%	--	--
September	78.5%	73.4%	78.3%	81.5%	--	--
October	78.0%	73.9%	80.9%	81.4%	--	--
November	78.0%	74.2%	80.4%	81.3%	--	--
December	74.4%	74.7%	77.7%	81.0%	--	--

Continuous Cast Steel Production						
Month	1991		1992		1993	
	Month	YTD	Month	YTD	Month	YTD
January	73.7%	73.7%	77.0%	77.0%	83.2%	83.2%
February	77.9%	75.7%	76.7%	76.8%	83.2%	83.2%
March	76.9%	76.0%	76.9%	76.8%	84.2%	84.6%
April	75.3%	75.8%	76.2%	76.7%	--	--
May	76.1%	75.8%	78.0%	76.9%	--	--
June	75.4%	75.8%	77.5%	77.0%	--	--
July	75.0%	75.6%	78.0%	77.2%	--	--
August	75.4%	75.5%	80.1%	77.5%	--	--
September	75.6%	75.5%	80.6%	77.8%	--	--
October	75.0%	75.4%	82.0%	78.2%	--	--
November	75.6%	75.5%	82.4%	78.6%	--	--
December	77.5%	75.6%	81.7%	78.9%	--	--

Comparative monthly composite prices in dollars per long ton (\$/lt) and dollars per metric ton (\$/mt) for No. 1 heavy melting steel scrap are shown as quoted by two sources:

American Metal Market						
Month	1991		1992		1993	
	\$/lt	\$/mt	\$/lt	\$/mt	\$/lt	\$/mt
January	105.04	103.38	85.67	84.32	98.47	96.91
February	102.36	100.74	86.51	85.14	106.48	104.80
March	98.79	97.23	88.00	86.61	106.66	104.98
April	97.78	96.24	88.64	87.24	103.39	101.76
May	94.78	93.28	87.28	85.90	--	--
June	88.97	87.56	85.06	83.72	--	--
July	87.19	85.81	85.00	83.66	--	--
August	90.21	88.79	85.30	83.95	--	--
September	91.67	90.22	85.67	84.32	--	--
October	90.55	89.12	84.33	83.00	--	--
November	86.16	84.80	84.00	82.67	--	--
December	85.67	84.32	86.86	85.49	--	--
Avg through Mar	102.06	100.45	86.73	85.36	103.87	102.23
Avg through Dec	93.26	91.79	86.03	84.67	--	--

Iron Age						
Month	1991		1992		1993	
	\$/lt	\$/mt	\$/lt	\$/mt	\$/lt	\$/mt
January	103.25	101.62	84.29	82.96	97.33	95.79
February	100.67	99.08	85.21	83.86	104.25	102.60
March	98.50	96.94	86.73	85.36	102.67	101.05
April	98.23	96.68	87.33	85.95	101.17	99.57
May	93.50	92.02	86.08	84.72	--	--
June	87.92	86.53	83.67	82.35	--	--
July	88.10	86.71	83.92	82.59	--	--
August	92.00	90.55	84.70	83.36	--	--
September	92.70	91.24	85.42	84.07	--	--
October	91.75	90.30	83.83	82.51	--	--
November	86.67	85.30	83.53	82.21	--	--
December	85.23	83.88	88.04	86.65	--	--
Avg through Mar	100.81	99.22	85.41	84.06	101.42	99.82
Avg through Dec	93.21	91.74	85.23	83.88	--	--

TABLE 1
SALIENT IRON AND STEEL SCRAP, PIG IRON, AND DIRECT REDUCED IRON
FOR RAW STEEL PRODUCERS

(METRIC TONS)

Manufacturers of pig iron and raw steel and castings ¹²			
	Total for month of Mar 1993	Revised total for month of Feb 1993 ³	Total year through Mar 1993
Scrap:			
Receipts from dealers and other sources	3,059,520	2,885,304	8,670,064
Receipts from other own company plants	362,706	351,908	1,087,094
Production recirculating scrap	1,520,047	1,304,322	4,139,842
Production obsolete scrap	65,089	55,529	180,671
Consumption	4,498,313	4,195,212	13,003,560
Shipments	425,428	415,532	1,230,822
Stocks end of month	2,920,258	2,831,988	--
Pig iron:			
Receipts	551,280	679,122	1,825,532
Production	4,000,166	3,704,376	11,733,780
Consumption	4,484,452	4,301,189	13,323,509
Shipments	73,999	86,172	251,738
Stocks end of month	153,219	147,617	--
Direct-reduced or prerduced iron:			
Receipts ⁴	99,374	44,379	216,160
Production	W	W	W
Consumption	94,224	77,049	236,360
Shipments	W	W	W
Stocks end of month	91,101	88,034	--

¹ Withheld to avoid disclosing company proprietary data.

² Based on returns from 65% of reporting consumers, representing 77% of scrap consumption.

³ Includes only those manufacturers of steel castings that also produce raw steel.

⁴ Based on returns from 63% of reporting consumers, representing 71% of scrap consumption.

⁵ Includes production.

TABLE 2
CONSUMPTION OF IRON AND STEEL SCRAP AND PIG IRON IN THE
UNITED STATES IN MARCH 1993 BY TYPE OF CONSUMER AND
TYPE OF FURNACE OR OTHER USE

(METRIC TONS)

Manufacturers of pig iron and raw steel and castings ¹		
Type of furnace or other use	Scrap	Pig iron
Blast furnace ²	249,814	--
Basic oxygen process ³	1,289,665	4,459,087
Electric furnace	2,950,303	12,128
Cupola furnace	--	--
Other (includes air furnace) ⁴	8,531	2,963
Direct castings ⁵	--	10,274
Total	4,498,313	4,484,452

¹ Includes only those castings made by companies producing raw steel.

² Includes consumption in all blast furnaces producing pig iron.

³ Includes scrap and pig iron processed in metallurgical blast cupolas and used in oxygen converters.

⁴ Includes vacuum melting furnaces and miscellaneous uses.

⁵ Includes ingot molds and stools.

TABLE 3
MANUFACTURERS OF PIG IRON AND RAW STEEL AND CASTINGS¹, RECEIPTS, PRODUCTION,
CONSUMPTION, SHIPMENTS AND STOCKS OF PIG IRON AND IRON AND STEEL SCRAP,
BY GRADE, MARCH 1993²
(METRIC TONS)

Item	Receipts of scrap		Production of home scrap			Shipments of scrap	Ending stocks
	Brokers and other outside sources	Other own company plants	Recirculating scrap	Obsolete scrap	Consumption of purchased and home scrap		
Scrap:							
Carbon steel							
Low-phosphorus plate and punchings	36,220	--	32,979	--	68,736	457	43,451
Cut structural and plate	204,213	3,836	48,228	9,853	246,686	22,319	149,798
No. 1 Heavy melting steel	588,437	93,425	499,390	31,138	1,022,713	150,145	613,474
No. 2 Heavy melting steel	372,543	7,813	71,926	1,509	433,414	2,641	359,253
No. 1 And electric furnace bundles	428,526	62,479	61,250	110	476,600	66,286	375,306
No. 2 And all other bundles	100,164	1,759	6,762	--	106,107	27	72,171
Electric furnace 1 foot and under (not bundles)	714	8,420	12,229	--	18,770	2,194	2,321
Railroad rails	29,311	2,272	1,969	--	34,179	--	26,942
Turnings and borings	123,238	6,236	5,985	--	129,176	2,431	57,811
Slag scrap (Fe content 79 percent)	96,970	15,155	190,193	86	248,501	54,036	108,390
Shredded and fragmented	489,443	76,218	1,883	--	567,815	5,629	314,371
No. 1 Busheling	173,227	11,067	18,523	5	200,632	3,038	130,540
No. 2 All other carbon steel scrap	233,935	46,340	387,735	3,494	586,859	74,056	249,626
Stainless steel scrap							
Alloy steel (except stainless)	38,672	676	36,849	79	73,563	1,442	46,646
Ingot mold and stool scrap	12,153	2,297	53,983	--	64,319	1,778	88,181
Machinery and cupola cast iron	7,072	6,891	16,058	19,678	36,862	15,844	105,179
Cast iron borings	3,892	--	183	--	3,854	672	3,719
Motor blocks	10,681	--	2	--	6,158	644	7,613
Other iron scrap	--	--	--	--	--	--	--
Other mixed scrap	39,601	5,238	46,365	122	78,418	15,900	93,856
	70,508	12,584	27,755	15	94,951	5,889	71,610
Total scrap	3,059,520	362,706	1,520,047	65,089	4,498,313	425,428	2,920,258
Total scrap through March 1993	8,670,064	1,087,094	4,139,842	180,671	13,003,560	1,230,822	2,920,258
	Receipts	Production	Consumption	Stocks			
Pig iron							
	551,280	4,000,166	4,484,452	153,219			
Pig iron through March 1993	1,825,532	11,733,780	13,323,509	153,219			

¹Includes only those manufacturers of steel castings that also produce raw steel.

²Based on returns from 65% of reporting consumers, representing 77% of scrap consumption.

³Recirculating scrap resulting from current operations.

⁴Obsolete scrap includes ingot molds, stools, and scrap from old equipment, buildings, etc.

⁵Home scrap includes recirculating scrap.

TABLE 4
 IRON AND STEEL SCRAP SUPPLY¹ AVAILABLE FOR CONSUMPTION IN MARCH 1993, BY REGION AND STATE
 (METRIC TONS)

	Receipts of scrap		Production of home scrap		Shipments of scrap ³	New supply available for consumption ⁴
	From brokers, dealers and other outside sources	From other company plants	Recirculating scrap results from current operations	Obsolete scrap ²		
New England and Middle Atlantic:						
New Jersey	121,831	W	6,609	--	W	128,877
New York	251,545	W	119,957	3,777	W	433,675
Pennsylvania						
Total ⁴	373,376	74,394	126,566	3,777	15,560	562,553
North Central:						
Illinois	385,352	W	121,644	W	W	507,851
Indiana	185,066	42,313	648,822	W	265,726	619,325
Iowa	168,090	W	16,540	--	W	195,553
Missouri	165,831	W	64,150	W	11,759	223,166
Michigan	383,375	W	181,501	46,397	W	624,892
Ohio						
Total ⁴	1,287,715	177,195	1,032,658	55,551	382,330	2,170,789
South Atlantic:						
Delaware						
Florida						
Georgia						
Maryland						
North Carolina						
South Carolina						
Virginia						
West Virginia	337,349	60,966	125,893	W	W	504,555
South Central:						
Alabama						
Arkansas						
Kentucky						
Louisiana						
Mississippi						
Oklahoma						
Tennessee						
Texas	778,793	50,151	156,388	1,227	6,516	980,043
Mountain Pacific:						
California						
Colorado						
Oregon						
Utah	282,287	--	78,544	W	W	363,995
Washington						
Grand Total ⁴	3,059,520	362,706	1,520,047	65,089	425,428	4,581,933

W Withheld to avoid disclosing company proprietary data, included in "Total".
¹New supply available for consumption is a net figure computed by adding production to receipts and deducting scrap shipped during the month. The plus or minus difference in stock levels at the beginning and end of the month is not taken into consideration.
²Obsolete scrap includes ingot molds, stools and scraps from old equipment, buildings, etc.
³Includes scrap shipped, transferred, or otherwise disposed of during the year.
⁴Data may not add to totals shown because of independent rounding.

TABLE 5
RECEIPTS OF SCRAP¹ IN MARCH 1993 BY REGION² AND GRADE

	(METRIC TONS)				
	New England and Mid-Atlantic	North Central	South Atlantic	South Central	Mountain and Pacific
Carbon steel:					
Low-phosphorus plate and punchings----	17,578	16,217	2,282	W	W
Cut structural and plate-----	37,842	44,753	24,984	61,838	34,795
Number 1 heavy melting steel-----	31,363	233,359	64,211	207,687	51,817
Number 2 heavy melting steel-----	15,385	144,867	43,364	148,173	20,754
Number 1 and electric-furnace bundles-----	31,441	328,601	26,386	36,744	5,353
Number 2 and all other bundles-----	21,460	27,669	13,442	29,258	8,335
Electric furnace, 1 foot and under (not bundles)-----	W	W	--	--	--
Railroad rails-----	535	W	W	W	W
Turning and borings-----	27,350	24,493	15,106	45,181	11,109
Slag scrap (Fe content 70%)-----	16,814	38,137	27,213	14,806	--
Shredded or fragmentized-----	57,084	187,096	52,695	144,902	47,666
Number 1 busheling-----	39,772	72,920	26,401	25,674	8,460
All other carbon steel scrap-----	26,427	122,505	9,165	42,662	33,175
Stainless steel scrap-----	34,871	1,384	W	--	W
Alloy steel (except stainless)-----	7,287	2,145	--	W	W
Ingot mold and stool scrap-----	3,360	W	--	--	W
Machinery and cupola cast iron-----	--	3,003	--	531	358
Cast iron borings-----	W	6,555	--	W	601
Other iron scrap-----	268	7,501	28,136	3,697	--
Other mixed scrap-----	3,025	17,466	847	454	48,716
Total-----	373,376	1,287,715	337,349	778,793	282,287

W Withheld to avoid disclosing company proprietary data, included in "Total".

1/Scrap supplied from brokers, dealers and other outside sources.

2/A breakout of the states within each region is provided in Table 4.

TABLE 6
IRON AND STEEL SCRAP CONSUMED IN MARCH 1993 BY REGION AND GRADE

	(METRIC TONS)				
	New England and Mid-Atlantic	North Central	South Atlantic	South Central	Mountain and Pacific
Carbon steel:					
Low-phosphorus plate and punchings----	18,174	13,489	2,129	W	W
Cut structural and plate-----	47,545	74,356	25,631	63,976	35,180
Number 1 heavy melting steel-----	106,102	456,562	139,782	257,754	62,514
Number 2 heavy melting steel-----	31,374	156,753	49,376	174,845	21,065
Number 1 and electric-furnace bundles-----	35,211	375,186	28,145	32,220	5,837
Number 2 and all other bundles-----	19,622	36,114	12,545	29,217	8,609
Electric furnace, 1 foot and under (not bundles)-----	W	W	--	W	--
Railroad rails-----	W	W	W	W	W
Turning and borings-----	32,540	31,833	14,758	39,220	10,825
Slag scrap (Fe content 70%)-----	18,518	160,768	35,055	25,433	8,726
Shredded or fragmentized-----	55,890	205,196	72,040	184,714	49,975
Number 1 busheling-----	34,726	106,800	25,749	24,268	9,089
All other carbon steel scrap-----	69,008	374,102	32,074	63,650	48,025
Stainless steel scrap-----	66,574	3,981	W	--	W
Alloy steel (except stainless)-----	21,119	38,176	--	W	W
Ingot mold and stool scrap-----	6,633	19,760	528	4,393	W
Machinery and cupola cast iron-----	W	2,857	--	494	436
Cast iron borings-----	W	W	--	W	733
Other iron scrap-----	11,728	31,198	29,807	1,997	3,056
Other mixed scrap-----	3,041	31,528	1,535	8,707	50,139
Total-----	584,112	2,138,465	473,278	936,849	365,609

W Withheld to avoid disclosing company proprietary data, included in "Total".

TABLE 7
U.S. EXPORTS OF IRON AND STEEL SCRAP¹, BY COUNTRY

(METRIC TONS AND U.S. DOLLARS)

	February 1993		Year to date	
	Quantity	Value	Quantity	Value
Argentina-----	--	--	39	4,500
Australia-----	--	--	567	449,500
Belgium-----	--	--	827	95,091
Canada-----	119,700	13,684,132	221,471	25,076,920
Chile-----	--	--	21	4,500
China-----	30,032	4,493,600	38,250	6,883,570
Colombia-----	2,298	110,000	2,656	159,212
Costa Rica-----	263	131,221	263	131,221
Dominican Republic---	64	15,087	64	15,087
Ecuador-----	13	4,423	13	4,423
France-----	44	4,440	80	8,044
Germany-----	35	4,000	5,622	74,952
Guatemala-----	--	--	1,480	293,196
Haiti-----	--	--	42	19,447
Hong Kong-----	3,876	1,101,110	12,234	2,846,210
India-----	765	195,156	33,833	3,393,278
Indonesia-----	620	162,141	1,071	203,724
Ireland-----	65	6,569	252	25,259
Italy-----	169	117,596	2,183	1,859,109
Jamaica-----	59	41,953	118	83,906
Japan-----	47,958	7,336,050	120,992	17,398,134
Korea, Republic of---	366,870	41,251,755	646,216	71,005,420
Malaysia-----	100	15,370	158	25,327
Mexico-----	24,200	3,154,693	46,091	6,069,252
Netherlands-----	154	31,361	1,580	199,991
New Zealand-----	245	180,051	700	637,910
Pakistan-----	90	120,550	16,892	2,416,928
Panama-----	40	5,430	40	5,430
Peru-----	1,223	130,494	1,474	312,294
Philippines-----	148	56,111	1,049	561,923
Portugal-----	--	--	84	8,246
Saudi Arabia-----	--	--	28	22,117
Singapore-----	158	36,177	242	44,501
South Africa, Republic of-----	682	77,920	3,290	377,920
Sweden-----	330	190,000	793	547,000
Taiwan-----	61,116	5,833,248	114,250	11,615,380
Thailand-----	41	10,000	8,221	1,815,126
Turkey-----	110,317	11,148,893	136,492	13,738,591
United Arab Emirates-	38	60,505	55	77,693
United Kingdom-----	65	50,468	1,510	289,697
Venezuela-----	207	61,910	386	123,260
Grand total-----	771,985	89,822,414	1,421,629	169,591,289

¹Excludes used rails for rerolling and other uses and ships, boats and other vessels for scrapping.

Source: Bureau of the Census.

TABLE 8
U.S. EXPORTS AND RE-EXPORTS OF IRON AND STEEL SCRAP¹ IN FEBRUARY 1993, BY CUSTOMS DISTRICT
(METRIC TONS AND U.S. DOLLARS)

Customs District	Code	Exports		Re-exports		Exports plus re-exports	
		Quantity	Value	Quantity	Value	Quantity	Value
Baltimore, MD-----	13	317	153,256	--	--	317	153,256
Boston, MA-----	04	144,921	13,089,118	--	--	144,921	13,089,118
Buffalo, NY-----	09	5,765	1,670,367	--	--	5,765	1,670,367
Charleston, SC-----	16	22,098	2,398,590	--	--	22,098	2,398,590
Chicago, IL-----	39	106	10,584	--	--	106	10,584
Columbia - Snake-----	29	24,825	3,291,389	--	--	24,825	3,291,389
Detroit, MI-----	38	22,909	3,388,697	--	--	22,909	3,388,697
Duluth, MN-----	36	830	73,992	--	--	830	73,992
El Paso, TX-----	24	73	15,605	--	--	73	15,605
Great Falls, MT-----	33	233	52,632	--	--	233	52,632
Honolulu, HI-----	32	168	92,873	--	--	168	92,873
Houston-Galveston, TX-	53	5,607	3,850,537	--	--	5,607	3,850,537
Laredo, TX-----	23	20,781	2,734,817	--	--	20,781	2,734,817
Los Angeles, CA-----	27	62,298	9,059,929	--	--	62,298	9,059,929
Miami, FL-----	52	281	85,120	--	--	281	85,120
New Orleans, LA-----	20	4,187	495,716	--	--	4,187	495,716
New York, NY-----	10	91,174	10,150,922	--	--	91,174	10,150,922
Nogales, AZ-----	26	360	41,398	--	--	360	41,398
Norfolk, VA-----	14	21,427	2,318,375	--	--	21,427	2,318,375
Ogdensburg, NY-----	07	1,260	856,257	--	--	1,260	856,257
Pembina, ND-----	34	34,775	3,561,008	92	7,526	34,867	3,568,534
Philadelphia, PA-----	11	93,051	9,613,783	--	--	93,051	9,613,783
Portland, ME-----	01	42,137	4,294,206	--	--	42,137	4,294,206
Providence, RI-----	05	37,774	3,777,224	--	--	37,774	3,777,224
San Francisco, CA-----	28	31,657	4,936,113	--	--	31,657	4,936,113
San Juan, PR-----	49	131	68,736	--	--	131	68,736
Savannah, GA-----	17	487	138,679	--	--	487	138,679
Seattle, WA-----	30	29,491	3,671,963	--	--	29,491	3,671,963
St. Albans, VT-----	02	121	63,540	--	--	121	63,540
Tampa, FL-----	18	33,906	2,947,629	--	--	33,906	2,947,629
Virgin Islands-----	51	2,298	110,000	--	--	2,298	110,000
Other ² -----	70,80	36,537	2,809,359	--	--	36,537	2,809,359
Grand total-----		771,985	89,822,414	92	7,526	772,077	89,829,940

¹Includes tinplate and terneplate; excludes used rails for rerolling and other uses and ships, boats and other vessels for scrapping. Import valuation is on a customs basis.

²"Other" includes Code 70, which is for low-valued exports and imports between the U.S. and Canada, and Code 80, which is for items that leave the U.S. by mail.

Source: Bureau of the Census.

TABLE 9
U.S. EXPORTS AND RE-EXPORTS OF IRON AND STEEL SCRAP¹ IN JANUARY - FEBRUARY 1993, BY CUSTOMS DISTRICT
(METRIC TONS AND U.S. DOLLARS)

Customs District	Code	Exports		Re-exports		Exports plus re-exports	
		Quantity	Value	Quantity	Value	Quantity	Value
Baltimore, MD-----	13	868	670,353	--	--	868	670,353
Boston, MA-----	04	186,665	16,790,677	--	--	186,665	16,790,677
Buffalo, NY-----	09	11,840	3,206,178	--	--	11,840	3,206,178
Charleston, SC-----	16	23,072	2,751,592	--	--	23,072	2,751,592
Chicago, IL-----	39	251	29,257	--	--	251	29,257
Columbia - Snake-----	29	40,652	5,104,070	--	--	40,652	5,104,070
Detroit, MI-----	38	43,822	6,253,398	--	--	43,822	6,253,398
Duluth, MN-----	36	1,300	115,672	--	--	1,300	115,672
El Paso, TX-----	24	161	24,252	--	--	161	24,252
Great Falls, MT-----	33	411	75,691	--	--	411	75,691
Honolulu, HI-----	32	25,276	2,973,916	--	--	25,276	2,973,916
Houston-Galveston, TX-	53	11,616	7,789,793	--	--	11,616	7,789,793
Laredo, TX-----	23	42,343	5,623,659	120	9,580	42,463	5,633,239
Los Angeles, CA-----	27	207,828	26,162,170	--	--	207,828	26,162,170
Miami, FL-----	52	16,856	1,956,586	--	--	16,856	1,956,586
New Orleans, LA-----	20	35,318	4,637,585	--	--	35,318	4,637,585
New York, NY-----	10	163,617	17,647,073	--	--	163,617	17,647,073
Nogales, AZ-----	26	385	44,298	--	--	385	44,298
Norfolk, VA-----	14	22,279	2,727,719	--	--	22,279	2,727,719
Ogdensburg, NY-----	07	1,817	1,189,042	--	--	1,817	1,189,042
Pembina, ND-----	34	68,265	6,958,937	92	7,526	68,357	6,966,463
Philadelphia, PA-----	11	126,867	13,073,805	--	--	126,867	13,073,805
Portland, ME-----	01	56,660	5,506,686	--	--	56,660	5,506,686
Providence, RI-----	05	73,797	7,271,764	--	--	73,797	7,271,764
San Diego, CA-----	25	216	14,170	--	--	216	14,170
San Francisco, CA-----	28	67,685	12,368,757	--	--	67,685	12,368,757
San Juan, PR-----	49	173	79,048	--	--	173	79,048
Savannah, GA-----	17	696	227,777	--	--	696	227,777
Seattle, WA-----	30	59,513	7,374,047	--	--	59,513	7,374,047
St. Albans, VT-----	02	288	132,810	--	--	288	132,810
Tampa, FL-----	18	60,081	5,537,327	--	--	60,081	5,537,327
Virgin Islands-----	51	2,298	110,000	--	--	2,298	110,000
Wilmington, NC-----	15	64	9,831	--	--	64	9,831
Other ² -----	70,80	68,649	5,153,349	--	--	68,649	5,153,349
Grand total-----		1,421,629	169,591,289	212	17,106	1,421,841	169,608,395

¹Includes tinplate and terneplate; excludes used rails for rerolling and other uses and ships, boats and other vessels for scrapping. Import valuation is on a customs basis.

²"Other" includes Code 70, which is for low-valued exports and imports between the U.S. and Canada, and Code 80, which is for items that leave the U.S. by mail.

Source: Bureau of the Census.

TABLE 10
U.S. EXPORTS OF IRON AND STEEL SCRAP AND OTHER FERROUS PRODUCTS, BY GRADE
(METRIC TONS AND U.S. DOLLARS)

Grade of scrap	February 1993		Year to date	
	Quantity	Value	Quantity	Value
No. 1 heavy melting steel scrap-----	186,053	18,480,456	340,534	33,583,156
No. 2 heavy melting steel scrap-----	70,959	6,589,798	130,038	11,883,157
No. 1 bundles-----	507	57,895	17,013	1,931,562
No. 2 bundles-----	16,949	1,266,817	47,639	3,551,105
Shredded steel scrap-----	179,969	18,592,427	335,396	34,723,319
Borings, shovelings and turnings-----	14,243	1,238,666	27,254	2,334,192
Cut plate and structural-----	61,496	6,669,916	98,057	11,573,711
Tinned iron or steel-----	26,849	3,080,339	33,193	6,502,452
Remelting scrap ingots-----	31	23,768	50	37,348
Cast iron-----	128,396	13,614,502	176,852	18,661,388
Other iron and steel-----	50,094	5,722,686	139,594	16,293,474
Total carbon steel & cast iron---	735,546	75,337,270	1,345,620	141,074,864
Stainless steel-----	14,834	10,259,876	26,837	18,332,874
Other alloy steel-----	21,605	4,225,268	49,172	10,183,551
Total stainless & alloy steel----	36,439	14,485,144	76,009	28,516,425
Total carbon, stainless, alloy steel & cast iron -----	771,985	89,822,414	1,421,629	169,591,289
Ships, boats, and other vessels for breaking up (for scrapping)-----	9,651	823,740	19,066	1,571,393
Used rails for rerolling and other uses ¹ -----	2,051	657,640	5,997	1,744,940
Total scrap exports-----	783,687	91,303,794	1,446,692	172,907,622
EXPORTS OF MANUFACTURED FERROUS PRODUCTS:				
Pig iron < or = 0.5% phosphorus-----	2,508	226,582	5,002	453,009
Pig iron > 0.5% phosphorus-----	--	--	33	9,240
Alloy pig iron-----	487	48,232	1,271	117,137
Total pig iron-----	2,995	274,814	6,306	579,386
Direct reduced iron (DRI) > 80% iron--	1,138	120,386	4,745	505,694
DRI minimum of 99.94% metallic iron--	175	102,542	386	244,900
Ferrous granules-----	2,045	1,779,179	4,124	3,104,842
Powders of alloy steel-----	354	817,666	547	1,094,552
Other ferrous powders-----	1,090	1,667,048	2,514	3,643,439
Total DRI, granules & powders----	4,802	4,486,821	12,316	8,593,427
Grand total-----	791,484	96,065,429	1,465,314	182,080,435

¹Total includes mixed (used plus new) rails. For month of February: 963 metric tons valued at \$462,025; for year to date: 1,561 metric tons valued at \$741,971.

Source: Bureau of the Census.

TABLE 11
U.S. IMPORTS FOR CONSUMPTION OF IRON AND STEEL SCRAP¹, BY COUNTRY

(METRIC TONS AND U.S. DOLLARS)

Country	February 1993		Year to date	
	Quantity	Value	Quantity	Value
Bahamas, The-----	--	--	15	1,500
Brazil-----	174	23,270	228	41,250
Canada-----	75,867	8,415,138	155,479	16,790,231
Finland-----	85	48,845	85	48,845
Germany-----	56	29,895	56	29,895
Israel-----	5	2,270	5	2,270
Jamaica-----	1,480	148,032	1,480	148,032
Japan-----	3,453	374,196	9,070	934,880
Mexico-----	7,728	1,511,268	15,193	2,847,713
Switzerland-----	2	2,890	9	10,109
Trinidad and Tobago---	33	20,000	33	20,000
United Kingdom-----	--	--	15	2,309
Venezuela-----	29,326	2,614,042	29,655	2,727,414
Grand total -----	118,209	13,189,846	211,323	23,604,448

¹Includes tinsplate and terneplate; excludes used rails for rerolling and other uses and ships, boats and other vessels for scrapping.

Source: Bureau of the Census.

TABLE 12
U.S. IMPORTS FOR CONSUMPTION OF IRON AND STEEL SCRAP¹, BY CUSTOMS DISTRICT

(METRIC TONS AND U.S. DOLLARS)

Customs District	Code	February 1993		Year to date	
		Quantity	Value	Quantity	Value
Baltimore, MD-----	13	85	48,845	85	48,845
Buffalo, NY-----	09	15,969	1,677,566	32,376	3,470,427
Chicago, IL-----	39	--	--	7	7,219
Cleveland, OH-----	41	2,862	276,343	10,440	809,246
Detroit, MI-----	38	38,093	4,418,034	74,343	8,381,331
Duluth, MN-----	36	87	77,122	153	168,840
El Paso, TX-----	24	1,314	191,494	3,979	462,809
Great Falls, MT-----	33	88	8,462	174	16,247
Honolulu, HI-----	32	38	1,324	38	1,324
Houston-Galveston, TX---	53	200	90,605	398	152,327
Laredo, TX-----	23	6,021	1,142,621	9,601	1,946,586
Los Angeles, CA-----	27	--	--	477	18,000
Miami, FL-----	52	203	81,561	282	104,832
New Orleans, LA-----	20	30,602	2,629,517	32,065	2,799,962
New York, NY-----	10	7	5,160	7	5,160
Nogales, AZ-----	26	187	47,906	217	101,612
Norfolk, VA-----	14	56	29,895	56	29,895
Ogdensburg, NY-----	07	926	391,333	1,611	734,957
Pembina, ND-----	34	285	131,394	606	324,865
Portland, ME-----	01	156	13,199	309	47,474
San Diego, CA-----	25	1,016	255,104	2,640	503,352
Seattle, WA-----	30	19,828	1,637,742	41,057	3,364,887
St. Albans, VT-----	02	146	20,373	295	60,126
Tampa, FL-----	18	40	14,246	107	44,125
Grand total-----		118,209	13,189,846	211,323	23,604,448

¹Includes tinsplate and terneplate; excludes used rails for rerolling and other uses and ships, boats and other vessels for scrapping. Import valuation is on a customs basis.

Source: Bureau of the Census.

TABLE 13
U.S. IMPORTS FOR CONSUMPTION OF IRON AND STEEL SCRAP AND OTHER FERROUS PRODUCTS, BY GRADE
(METRIC TONS AND U.S. DOLLARS)

Grade of scrap	February 1993		Year to date	
	Quantity	Value	Quantity	Value
No. 1 heavy melting steel scrap-----	2,461	285,324	5,655	639,413
No. 2 heavy melting steel scrap-----	235	18,472	661	52,293
No. 1 bundles-----	9,589	990,426	21,484	2,182,495
No. 2 bundles-----	1,047	106,136	2,223	228,387
Shredded steel scrap-----	4,669	595,518	9,583	1,175,480
Borings, shovelings and turnings-----	6,930	589,715	11,281	975,698
Cut plate and structural-----	1,789	201,549	2,720	304,711
Tinned iron or steel-----	603	192,515	1,664	284,302
Remelting scrap ingots-----	29,146	2,500,795	29,200	2,518,775
Cast iron-----	4,128	509,753	8,214	957,562
Other iron and steel-----	42,540	4,088,403	86,095	7,888,352
Total carbon steel & cast iron---	103,137	10,078,606	178,780	17,207,468
Stainless steel-----	3,026	1,526,458	5,834	3,030,732
Other alloy steel-----	12,046	1,584,782	26,709	3,366,248
Total stainless & alloy steel----	15,072	3,111,240	32,543	6,396,980
Total carbon, stainless, alloy steel & cast iron-----	118,209	13,189,846	211,323	23,604,448
Ships, boats, and other vessels for breaking up (for scrapping)-----	--	--	8	40,737
Used rails for rerolling and other uses-----	5,448	1,169,056	12,004	2,450,297
Total scrap imports-----	123,657	14,358,902	223,335	26,095,482
IMPORTS OF MANUFACTURED FERROUS PRODUCTS:				
Pig iron < or = 0.5% phosphorus-----	23,122	2,097,439	99,621	10,205,233
Pig iron > 0.5% phosphorus-----	43	8,016	43	8,016
Alloy pig iron-----	--	--	8,588	1,233,676
Total pig iron-----	23,165	2,105,455	108,252	11,446,925
Direct reduced iron (DRI) > 80% iron- DRI minimum of 99.94% metallic iron--	84,439	7,771,846	144,173	13,164,894
Ferrous granules-----	194	99,757	392	255,528
Powders of alloy steel-----	1,079	693,520	2,902	1,743,964
Other ferrous powders-----	653	781,343	901	1,200,257
	7,083	4,213,790	12,324	8,699,752
Total DRI, granules & powders----	93,448	13,560,256	160,692	25,064,395
Grand total-----	240,270	30,024,613	492,279	62,606,802

Source: Bureau of the Census.