

Mineral Industry Surveys

For information, contact:

Candice C. Tuck, Iron Ore Commodity Specialist
National Minerals Information Center
U.S. Geological Survey
989 National Center
Reston, VA 20192
Telephone: (703) 648-4912, Fax: (703) 648-7757
Email: ctuck@usgs.gov

Hoa P. Phamdang (Data)
Telephone: (703) 648-7965
Fax: (703) 648-7975
Email: hphamdan@usgs.gov

Internet: <http://minerals.usgs.gov/minerals/>

IRON ORE IN NOVEMBER 2018

U.S. mine production and shipments of iron ore in November 2018 were 4.40 million metric tons (Mt) and 4.91 Mt, respectively (fig. 1, table 1). Average daily production of iron ore was 147,000 metric tons (t), 9% more than that of October and slightly less than that of November 2017. Average daily shipments of iron ore were 164,000 t, slightly more than those in October and 13% more than those in November 2017. Mine stocks at the end of November 2018 were 7% less than those held at the end of October and 11% more than those held at the end of November 2017 (fig. 1, table 1).

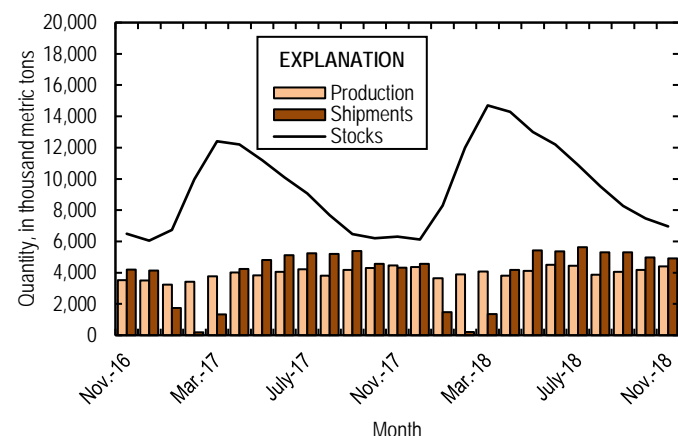


Figure 1. Monthly domestic production, shipments, and stocks of iron ore from November 2016 through November 2018.

Monthly iron ore data are reported as gross weight unless otherwise noted and do not include iron metalics such as pig iron, direct-reduced iron, hot-briquetted iron, or iron nuggets.

U.S. exports of iron ore were 946,000 t in November 2018, 25% less than those in October and about the same as those in November 2017 (fig. 2, table 3). U.S. imports of iron ore were

403,000 t in November 2018, 8% more than those in October and 42% more than those in November 2017 (fig. 2, table 4).

Seasonal variations of exports, imports, shipments, and stocks during the winter months are attributed to freezing of waterways and the closing of the Soo Locks, which are used to transport iron ore in the Great Lakes region through the St. Lawrence Seaway.

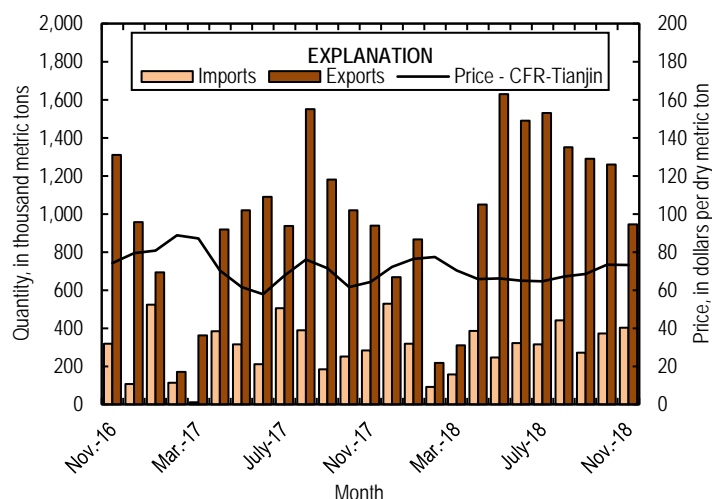


Figure 2. Monthly domestic imports and exports of iron ore and spot prices for imported iron ore fines, 62% iron content, cost and freight (CFR), at Tianjin Port, China, from November 2016 through November 2018. Source: U.S. Census Bureau and Index Mundi, undated.

List services and web feed subscribers are the first to receive notification of USGS minerals information publications and data releases. For information on how to subscribe, go to <http://minerals.usgs.gov/minerals/>.

TABLE 1
U.S. PRODUCTION, SHIPMENTS, AND STOCKS OF IRON ORE^{1,2}
(Exclusive of ore containing 5% or more of manganese)

(Thousand metric tons, usable ore)

Period	Production		Shipments ³		Stocks
	Monthly	Year to date	Monthly	Year to date	End of Month
2017:					
November	4,470	43,300	4,330	42,200	6,300
December	4,360	47,600	4,560	46,700	6,120
2018:					
January	3,640	3,640	1,470	1,470	8,290
February	3,900	7,540	214	1,680	12,000
March	4,070	11,600	1,360	3,050	14,700
April	3,810	15,400	4,180	7,230	14,300
May	4,120	19,500	5,420	12,600	13,000
June	4,510	24,000	5,370	18,000	12,200
July	4,440	28,500	5,640	23,700	10,900
August	3,880	32,400	5,310	29,000	9,520
September	4,050	36,400	5,300	34,300	8,270
October	4,180	40,600	4,970	39,200	7,480
November	4,400	45,000	4,910	44,100	6,970

¹Data are rounded to no more than three significant digits.

²Excludes byproduct ores and iron metallics.

³Includes rail and vessel.

TABLE 2
U.S. PRODUCTION OF PIG IRON AND RAW STEEL, BY TYPE OF FURNACE¹

(Thousand metric tons)

Period	Pig iron production		Raw steel production			
	Basic oxygen furnace		Blast furnace		Electric furnace	
	Monthly	Year to date	Monthly	Year to date	Monthly	Year to date
2017:						
November	1,770	20,600	1,980	23,700	4,660	51,200
December	1,840	22,400	2,120	25,800	4,620	55,800
2018:						
January	1,920	1,920	2,240	2,240	4,650	4,650
February	1,790	3,710	1,980	4,210	4,620	9,270
March	1,970	5,680	2,270	6,490	5,060	14,300
April	1,930	7,600	2,200	8,690	4,720	19,000
May	2,070	9,680	2,400	11,100	4,860	23,900
June	2,060	11,700	2,330	13,400	4,730	28,600
July	2,100	13,800	2,370	15,800	5,010	33,700
August	2,030	15,900	2,340	18,100	5,140	38,800
September	2,010	17,900	2,350	20,500	4,910	43,700
October	2,060	19,900	2,360	22,800	5,190	48,900
November	2,030	22,000	2,380	25,200	5,020	53,900

¹Data are rounded to no more than three significant digits.

Source: American Iron and Steel Institute.

U.S. EXPORTS OF IRON ORE, BY COUNTRY OR LOCALITY AND TYPE ^{1,2}
(Exclusive of ore containing 20% or more manganese)

Country or locality and type of product	2017	2018				
	January–November	January–November				
	Quantity (thousand metric tons)	Quantity (thousand metric tons)	Value ³ (thousand dollars)	Quantity (thousand metric tons)	Value ³ (thousand dollars)	Value ³ (dollars per ton)
Canada	7,190 ^r	673	60,000	9,100	701,000	76.96
Japan	2,190 ^r	199	12,000	2,080	126,000	60.71
Mexico	195 ^r	73	5,170	558	53,800	96.49
Other	312 ^r	(4)	14	165	8,120	49.23
Total	9,890 ^r	946	77,200	11,900	889,000	74.66
Concentrates	83 ^r	(4)	24	64	9,150	142.95
Fine ores	31	(4)	27	1	248	248.00
Pellets	9,660	905	75,700	11,600	870,000	74.93
Other	116	40	1,450	226	9,030	39.97
Total	9,890 ^r	946	77,200	11,900	889,000	74.66

^rRevised.

¹Data are rounded to no more than three significant digits; may not add to totals shown.

²All countries with less than 5,000 metric tons of exports per month included in "Other."

³Free alongside ship (FAS) value.⁴Less than 1/2 unit.

Source: U.S. Census Bureau.

TABLE 4
U.S. IMPORTS FOR CONSUMPTION OF IRON ORE, BY COUNTRY OR LOCALITY AND TYPE^{1,2}
(Exclusive of ore containing 20% or more manganese)

Country or locality of origin and type of product	2017	2018		2018		
	January–November	November		January–November		
	Quantity (thousand metric tons)	Quantity (thousand metric tons)	Value ³ (thousand dollars)	Quantity (thousand metric tons)	Value ³ (thousand dollars)	Value ³ (dollars per ton)
Brazil	1,760	87	4,550	2,060	216,000	104.98
Canada	629	216	22,500	720	66,300	92.15
Russia	65	67	8,450	134	16,700	124.91
South Africa	80	5	520	34	3,470	102.03
Sweden	328	28	2,520	162	16,200	99.73
Other	310 [†]	(4)	2	219	19,200	87.85
Total	3,180 [†]	403	38,500	3,330	338,000	101.57
Concentrates	1,050	146	8,820	955	61,100	63.97
Fine Ores	184	16	1,370	229	19,900	86.97
Pellets	1,900	229	27,200	2,130	256,000	120.08
Other	38	12	1,160	13	1,230	94.23
Total	3,180 [†]	403	38,500	3,330	338,000	101.57

[†]Revised.

¹Data are rounded to no more than three significant digits; may not add to totals shown.

²All countries with less than 5,000 metric tons of imports per month included in "Other."

³Customs value. Excludes international freight and insurance charges.

⁴Less than ½ unit.

Source: U.S. Census Bureau.

TABLE 5
U.S. IMPORTS FOR CONSUMPTION OF IRON ORE, BY CUSTOMS DISTRICT^{1, 2}
(Exclusive of ore containing 20% or more manganese)

(Thousand metric tons)

Customs district (code no.)	Pellets			Total, all products		
	January–November		November 2018	January–November		November 2018
	2017	2018		2017	2018	
Chicago, IL (39)	28	28	--	757	785	146
New Orleans, LA (20)	1,840	2,100	229	2,140	2,300	245
Tampa, FL (18)	--	--	--	14	12	12
Other	33	--	--	267 ^r	229	(3)
Total	1,900	2,130	229	3,180 ^r	3,330	403

^rRevised. -- Zero.

¹Data are rounded to no more than three significant digits; may not add to totals shown.

²Customs Districts with less than 5,000 metric tons of imports per month included in "Other."

³Less than ½ unit.

Source: U.S. Census Bureau.