

# Mineral Industry Surveys

**For information, contact:**

Candice C. Tuck, Iron Ore Commodity Specialist  
 National Minerals Information Center  
 U.S. Geological Survey  
 989 National Center  
 Reston, VA 20192  
 Telephone: (703) 648-4912, Fax: (703) 648-7757  
 Email: ctuck@usgs.gov

Michelle B. Blackwell (Data)  
 Telephone: (703) 648-7943  
 Fax: (703) 648-7975  
 Email: mblackwell@usgs.gov

**Internet:** <http://minerals.usgs.gov/minerals/>

## IRON ORE IN MAY 2017

U.S. mine production and shipments of iron ore in May 2017 were 3.87 million metric tons (Mt) and 4.82 Mt, respectively (fig. 1, table 1). Average daily production of iron ore was 125,000 metric tons (t), 7% less than that of April and 7% greater than that of May 2016. Average daily shipments of iron ore were 155,000 t, 10% greater those in April and 4% greater than those in May 2016. Mine stocks at the end of May 2017 were 8% less than those held at the end of April 2017 and slightly greater than those held at the end of May 2016.

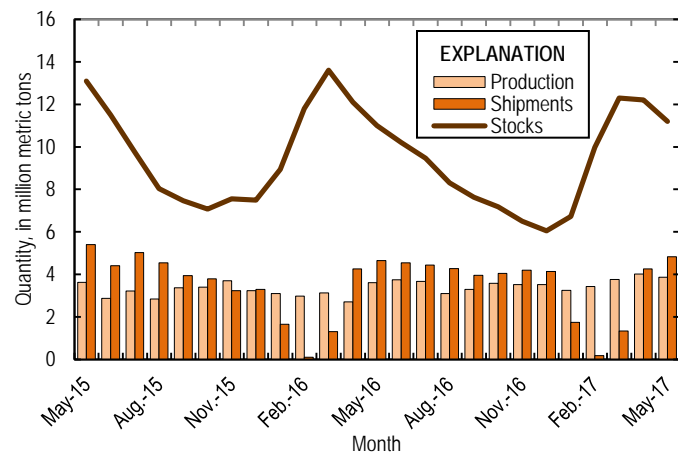


Figure 1. Monthly domestic production, shipments, and stocks of iron ore from May 2015 through May 2017.

Monthly iron ore data are reported as gross weight unless otherwise noted and do not include iron metallics such as pig iron, direct-reduced iron, hot-briquetted iron, or iron nuggets.

U.S. exports of iron ore totaled 988,000 t in May 2017, 7% greater than those in April 2017 and 32% greater than in May 2016. U.S. imports of iron ore totaled 315,000 t in May 2017, 18% less than those in April and 16% greater than those in May 2016 (fig. 2).

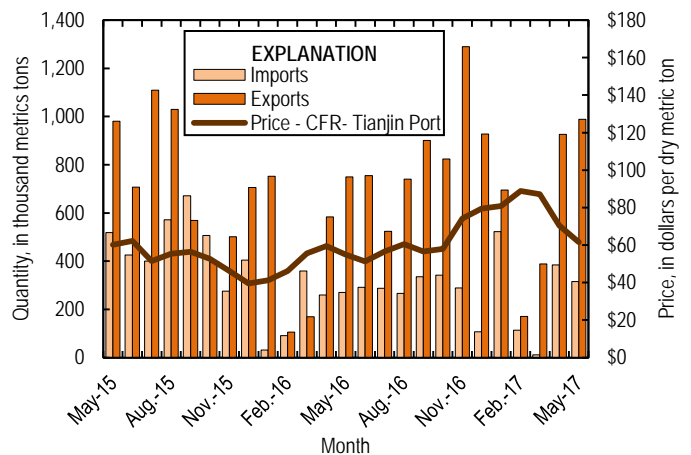


Figure 2. Monthly domestic imports and exports of iron ore and spot prices for iron ore import fines, 62% iron content CFR, at Tianjin Port, from May 2015 through May 2017. Source: U.S. Census Bureau and Index Mundi, undated.

List services and web feed subscribers are the first to receive notification of USGS minerals information publications and data releases. For information on how to subscribe, go to <http://minerals.usgs.gov/minerals/>.

TABLE 1  
U.S. PRODUCTION, SHIPMENTS, AND STOCKS OF IRON ORE<sup>1,2</sup>  
(Exclusive of ore containing 5% or more of manganese)

(Thousand metric tons, usable ore)

Period	Production		Shipments <sup>3</sup>		Stocks
	Monthly	Year to date	Monthly	Year to date	End of Month
2016:					
May	3,610	15,500	4,640	12,000	11,000
June	3,740	19,200	4,540	16,500	10,200
July	3,670	22,900	4,430	20,900	9,470
August	3,100	26,000	4,270	25,200	8,300
September	3,290	29,300	3,950	29,100	7,630
October	3,580	32,900	4,050	33,200	7,170
November	3,520	36,400	4,200	37,400	6,500
December	3,510	39,900	4,140	41,500	6,050
2017:					
January	3,240	3,240	1,740	1,740	6,730
February	3,420	6,660	179	1,920	9,970
March	3,760	10,400	1,340	3,260	12,400
April	4,020	14,400	4,250	7,510	12,200
May	3,870	18,300	4,820	12,300	11,200

<sup>1</sup>Data are rounded to no more than three significant digits.

<sup>2</sup>Excludes byproduct ores and iron metallics.

<sup>3</sup>Includes rail and vessel.

TABLE 2  
U.S. PRODUCTION OF PIG IRON AND RAW STEEL, BY TYPE OF FURNACE<sup>1</sup>

(Thousand metric tons)

Period	Pig iron production		Raw steel production			
	Basic oxygen furnace		Blast furnace		Electric furnace	
	Monthly	Year to date	Monthly	Year to date	Monthly	Year to date
2016:						
May	1,910	10,900	2,210	10,000	4,770	22,000
June	2,280	13,200	1,950	12,000	4,550	26,600
July	2,220	15,400	1,890	13,900	4,480	31,100
August	1,860	17,200	2,160	16,000	4,490	35,600
September	1,770	19,000	2,070	18,100	4,120	39,700
October	1,610	20,600	1,940	20,000	4,290	44,000
November	1,660	22,300	1,920	22,000	4,260	48,200
December	1,810	24,100	2,090	24,100	4,370	52,600
2017:						
January	1,940	1,940	2,240	2,240	4,740	4,740
February	1,930	3,870	2,140	4,380	4,280	9,020
March	1,960	5,830	2,250	6,630	4,640	13,700
April	1,870	7,700	2,150	8,780	4,540	18,200
May	1,940	9,630	2,210	11,000	4,690	22,900

<sup>1</sup>Data are rounded to no more than three significant digits.

Source: American Iron and Steel Institute.

TABLE 3  
U.S. EXPORTS OF IRON ORE, BY COUNTRY AND TYPE<sup>1,2</sup>  
(Exclusive of ore containing 20% or more manganese)

Country and type of product	2016			2017		
	January–May Quantity (thousand metric tons)	May		January–May		
		Quantity (thousand metric tons)	Value <sup>3</sup> (thousand dollars)	Quantity (thousand metric tons)	Value <sup>3</sup> (thousand dollars)	Value <sup>3</sup> (dollars per ton)
Belgium	--	18	1,340	45	2,810	62.49
Canada	2,320	791	63,000	2,380	174,000	73.00
Japan	(4)	169	10,500	644	40,100	62.24
Mexico	34	11	1,550	65	8,070	124.14
Other	8	(4)	35	33	2,740	83.09
<b>Total</b>	<b>2,360</b>	<b>988</b>	<b>76,400</b>	<b>3,170</b>	<b>228,000</b>	<b>71.84</b>
Concentrates	11	23	2,180	29	3,070	105.97
Fine ores	(4)	(4)	52	30	2,120	70.77
Pellets	2,320	965	74,100	3,040	217,000	71.46
Other	34	(4)	9	68	5,100	74.99
<b>Total</b>	<b>2,360</b>	<b>988</b>	<b>76,400</b>	<b>3,170</b>	<b>228,000</b>	<b>71.84</b>

-- Zero.

<sup>1</sup>Data are rounded to no more than three significant digits; may not add to totals shown.

<sup>2</sup>All countries with less than 5,000 metric tons of exports per month included in "Other."

<sup>3</sup>Free alongside ship (FAS) value.

<sup>4</sup>Less than ½ unit.

Source: U.S. Census Bureau.

TABLE 4  
U.S. IMPORTS FOR CONSUMPTION OF IRON ORE, BY COUNTRY AND TYPE<sup>1,2</sup>  
(Exclusive of ore containing 20% or more manganese)

Country of origin and type of product	2016			2017		
	January–May Quantity (thousand metric tons)	May		January–May		
		Quantity (thousand metric tons)	Value <sup>3</sup> (thousand dollars)	Quantity (thousand metric tons)	Value <sup>3</sup> (thousand dollars)	Value <sup>3</sup> (dollars per ton)
Brazil	548	315	33,700	790	81,500	103.12
Other	227	(4)	27	557	58,800	105.50
<b>Total</b>	<b>1,010</b>	<b>315</b>	<b>33,800</b>	<b>1,350</b>	<b>140,000</b>	<b>104.18</b>
Concentrates	200	67	3,510	217	15,700	72.32
Fine Ores	59	(4)	17	44	12,200	277.89
Pellets	753	248	30,200	1,090	112,000	103.41
Other	227	(4)	10	(4)	10	2.50
<b>Total</b>	<b>1,010</b>	<b>315</b>	<b>33,800</b>	<b>1,350</b>	<b>140,000</b>	<b>104.18</b>

<sup>1</sup>Data are rounded to no more than three significant digits; may not add to totals shown.

<sup>2</sup>All countries with less than 5,000 metric tons of imports per month included in "Oth

<sup>3</sup>Customs value. Excludes international freight and insurance charges.

<sup>4</sup>Less than ½ unit.

Source: U.S. Census Bureau.

TABLE 5  
 U.S. IMPORTS FOR CONSUMPTION OF IRON ORE, BY CUSTOMS DISTRICT<sup>1,2</sup>  
 (Exclusive of ore containing 20% or more manganese)

(Thousand metric tons)

Customs district (code no.)	Pellets			Total, all products		
	January–May		May	January–May		May
	2016	2017	2017	2016	2017	2017
Chicago, IL (39)	--	--	--	170	67	67
New Orleans, LA (20)	743	1,090	248	821	1,270	248
Other	9	--	--	21	11	(3)
Total	753	1,090	248	1,010	1,350	315

-- Zero.

<sup>1</sup>Data are rounded to no more than three significant digits; may not add to totals shown.

<sup>2</sup>Customs Districts with less than 5,000 metric tons of imports per month included in "Other."

<sup>3</sup>Less than ½ unit.

Source: U.S. Census Bureau.