

# Mineral Industry Surveys

## For information, contact:

Candice C. Tuck, Iron Ore Commodity Specialist  
National Minerals Information Center  
U.S. Geological Survey  
989 National Center  
Reston, VA 20192  
Telephone: (703) 648-4912, Fax: (703) 648-7757  
Email: ctuck@usgs.gov

Michelle B. Blackwell (Data)  
Telephone: (703) 648-7943  
Fax: (703) 648-7975  
Email: mblackwell@usgs.gov

Internet: <http://minerals.usgs.gov/minerals/>

## IRON ORE IN SEPTEMBER 2016

U.S. mine production and shipments of iron ore in September 2016 were 3.29 million metric tons (Mt) and 3.95 Mt, respectively (fig. 1, table 1). Average daily production of iron ore was 110,000 metric tons (t), 10% more than that of August, and slightly less than that of September 2015. Average daily shipments of iron ore were 132,000 t, 4% less than those in August, and nearly the same as those in September 2015. Mine stocks at the end of September 2016 were 9% less than those held at the end of August and 7% less than those held at the end of September 2015.

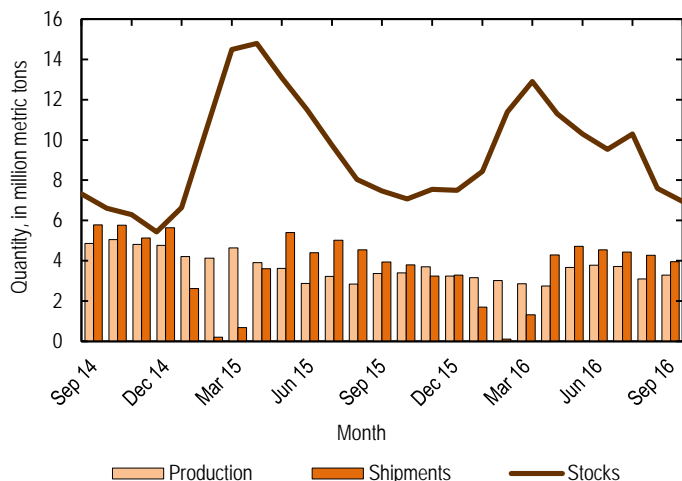


Figure 1. Monthly domestic production, shipments, and stocks of iron ore from September 2014 through September 2016. Source: U.S. Geological Survey.

Monthly iron ore data are reported as gross weight unless otherwise noted and do not include iron metallics such as pig iron, direct-reduced iron, hot-briquetted iron, or iron nuggets. Data for iron metallics can be found in the Iron Ore chapter in

the U.S. Geological Survey Minerals Yearbook, volume I, Metals and minerals.

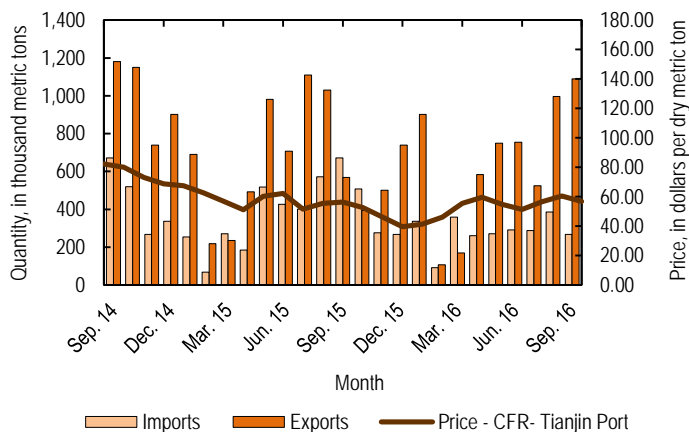


Figure 2. Monthly domestic imports and exports of iron ore and spot prices for iron ore import fines, 62% iron content CFR, at Tianjin Port, from September 2014 through September 2016. Source: U.S. Census Bureau and Index Mundi, undated.

U.S. exports of iron ore totaled 1.09 Mt in September 2016, 9% greater than those in August and nearly double those in September 2015. U.S. imports of iron ore totaled 267,000 t in September 2016, 31% less than those in August and 60% less than those in September 2015 (fig. 2).

List services and Web feed subscribers are the first to receive notification of USGS minerals information publications and data releases. For information on how to subscribe, go to <http://minerals.usgs.gov/minerals/>.

TABLE 1  
U.S. PRODUCTION, SHIPMENTS, AND STOCKS OF IRON ORE<sup>1,2</sup>

(Thousand metric tons, usable ore)

Period	Production		Shipments <sup>3</sup>		Stocks
	Monthly	Year to date	Monthly	Year to date	End of Month
2015:					
September	3,360	32,800	3,940	30,400	7,460
October	3,400	36,200	3,790	34,200	7,070
November	3,700	39,900	3,230	37,400	7,550
December	3,230	43,100	3,290	40,700	7,490
2016:					
January	3,150	3,150	1,700	1,700	8,440
February	3,020	6,160	106	1,810	11,400
March	2,850	9,010	1,310	3,120	12,900
April	2,740	11,800	4,290	7,410	11,300
May	3,660	15,400	4,710	12,100	10,300
June	3,740	19,200	4,540	16,700	9,490
July	3,720	22,900	4,430	21,100	8,770
August	3,100	26,000	4,270 <sup>r</sup>	25,400	7,600
September	3,290	29,300	3,950	29,300	6,940

<sup>r</sup>Revised.

<sup>1</sup>Data are rounded to no more than three significant digits.

<sup>2</sup>Excludes byproduct ores and iron metallics.

<sup>3</sup>Includes rail and vessel.

TABLE 2  
U.S. PRODUCTION OF PIG IRON AND RAW STEEL, BY TYPE OF FURNACE<sup>1</sup>

(Thousand metric tons)

Period	Pig iron production,		Raw steel production			
	Basic oxygen furnace		Blast furnace		Electric furnace	
	Monthly	Year to date	Monthly	Year to date	Monthly	Year to date
2015:						
September	2,390	22,900	2,090	19,700	4,170	37,600
October	2,270	25,200	1,990	21,700	4,270	41,900
November	2,120	27,300	1,780	23,500	3,710	45,600
December	2,110	29,400	1,930	25,400	3,860	49,400
2016:						
January	2,200	2,200	1,910	1,910	4,250	4,250
February	2,260	4,460	2,010	3,920	4,170	8,420
March	2,380	6,840	2,040	5,960	4,390	12,800
April	2,150	8,980	1,860	7,820	4,460	17,300
May	1,910	10,900	2,210	10,000	4,770	22,000
June	2,280	13,200	1,950	12,000	4,550	26,600
July	2,220	15,400	1,890	13,900	4,480	31,100
August	1,860	17,200	2,160	16,000	4,490	35,600
September	1,770	19,000	2,070	18,100	4,120	39,700

<sup>1</sup>Data are rounded to no more than three significant digits; may not add to totals shown.

Source: American Iron and Steel Institute.

TABLE 3  
U.S. EXPORTS OF IRON ORE, BY COUNTRY AND TYPE <sup>1,2</sup>  
(Exclusive of ore containing 20% or more manganese)

Country and type of product	2015	September		2016	January–September	
	January–September	September		January–September	January–September	
	Thousand metric tons	Thousand metric tons	Value <sup>3</sup> (thousand dollars)	Thousand metric tons	Value <sup>3</sup> (thousand dollars)	Value <sup>3</sup> (dollars per ton)
Belgium	36	42	\$1,970	42	\$1,970	\$46.88
Canada	5,140	761	49,300	5,140	356,000	69.37
China	252	187	6,540	365	12,800	34.97
Mexico	874	96	7,790	175	14,500	82.98
Other	38	(4)	150	9	1130	125.44
Total	6,340	1,090	65,700	5,730	387,000	67.52
Concentrates	240	27	3,280	60	7,610	126.87
Fine ores	29	53	3,030	71	4,650	65.55
Pellets	5,380	953	56,100	5,510	369,000	67.06
Other	695	54	3,330	88	4,960	56.35
Total	6,340	1,090	65,700	5,730	387,000	67.52

<sup>1</sup>Data are rounded to no more than three significant digits; may not add to totals shown.

<sup>2</sup>All countries with less than 5,000 metric tons of exports per month included in "Other."

<sup>3</sup>Free alongside ship (FAS) value.

<sup>4</sup>Less than ½ unit.

Source: U.S. Census Bureau.

TABLE 4  
U.S. IMPORTS FOR CONSUMPTION OF IRON ORE, BY COUNTRY AND TYPE <sup>1,2</sup>  
(Exclusive of ore containing 20% or more manganese)

Country of origin and type of product	2015	September		2016	January–September	
	January–September	September		January–September	January–September	
	Thousand metric tons	Thousand metric tons	Value <sup>3</sup> (thousand dollars)	Thousand metric tons	Value <sup>3</sup> (thousand dollars)	Value <sup>3</sup> (dollars per ton)
Brazil	1,530	190	\$12,900	1,340	\$96,700	\$72.41
Canada	1,360	76	6,940	427	29,500	69.02
Other	390	(4)	4	579	61,200	105.70
Total	3,280	267	19,800	2,340	187,000	80.03
Concentrates	507	83	3,100	598	29,500	49.38
Fine Ores	175	(4)	9	186	30,500	163.96
Pellets	2,560	183	16,700	1,540	125,000	81.59
Other	42	--	--	22	2,080	94.32
Total	3,280	267	19,800	2,340	187,000	80.03

-- Zero.

<sup>1</sup>Data are rounded to no more than three significant digits; may not add to totals shown.

<sup>2</sup>All countries with less than 5,000 metric tons of imports per month included in "Other."

<sup>3</sup>Customs value. Excludes international freight and insurance charges.

<sup>4</sup>Less than ½ unit.

Source: U.S. Census Bureau.

TABLE 5  
U.S. IMPORTS FOR CONSUMPTION OF IRON ORE,  
BY CUSTOMS DISTRICT<sup>1, 2</sup>

(Exclusive of ore containing 20% or more manganese)

Customs district (code no.)	(Thousand metric tons)					
	Pellets			Total, all products		
	January–September	September		January–September	September	
	2015	2016	2016	2015	2016	2016
Chicago, IL (39)	--	5	--	485	462	83
New Orleans, LA (20)	1,460	1,500	183	183	132	183
Other	1,100	32	--	56	212	(3)
Total	2,560	1,540	183	724	806	267

-- Zero.

<sup>1</sup>Data are rounded to no more than three significant digits; may not add to totals shown.

<sup>2</sup>Customs Districts with less than 5,000 metric tons of imports per month included in "Other."

<sup>3</sup>Less than ½ unit.

Source: U.S. Census Bureau.