

# Mineral Industry Surveys

## For information, contact:

Daniel M. Flanagan, Copper Commodity Specialist  
National Minerals Information Center  
U.S. Geological Survey  
989 National Center  
Reston, VA 20192  
Telephone: (703) 648-7726, Fax: (703) 648-7757  
Email: dflanagan@usgs.gov

Sheema Merchant (Data)  
Telephone: (703) 659-9944  
Fax: (703) 648-7975  
Email: smerchant@usgs.gov

**Internet:** <https://www.usgs.gov/centers/national-minerals-information-center>

## COPPER IN NOVEMBER 2021

In November 2021, domestic mine production of recoverable copper was 101,000 metric tons (t). The average daily mine production was 3,380 t, an increase of 3% compared with that in October and 5% higher than that in November 2020 (fig. 1). Year-to-date recoverable mine output was 1.11 million metric tons (Mt), a slight increase from that through November 2020 (table 2).

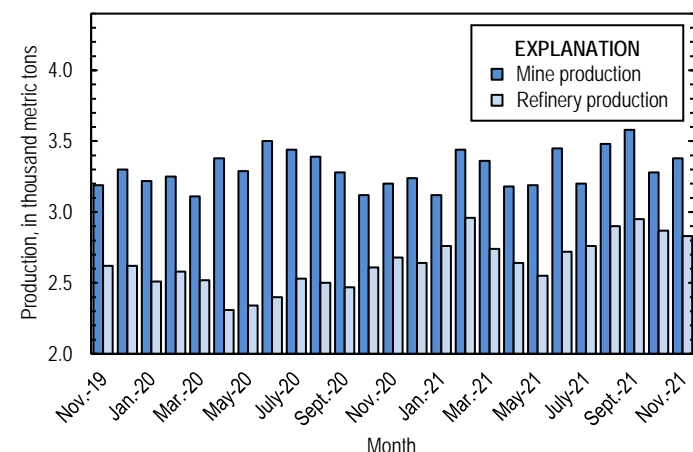


Figure 1. Average daily U.S. copper mine (recoverable) and refinery (primary and secondary) production from November 2019 through November 2021. Refinery production in November and December 2019 were withheld to avoid disclosing company proprietary data; the values shown reflect the daily average for cumulative production over this period rather than production in each month.

Owing to indefinite closures of ASARCO LLC's smelter in Arizona and electrolytic refinery in Texas, smelter and electrolytic refinery production reported to the U.S. Geological Survey in November 2021 were withheld to avoid disclosing company proprietary data. Smelter and electrolytic refinery output in tables 3 and 4 are estimates based on information in quarterly company reports. The facilities shut down in October 2019 because of a worker strike, which ended in July 2020. As of November 2021, ASARCO had not publicly announced when operations were expected to resume or a reason for the continued closures. The company's three copper mines and two

electrowon refineries in Arizona continued to operate during the smelter and electrolytic refinery stoppages (Grupo México, S.A.B. de C.V., 2021, p. 83).

Estimated smelter production in the United States was 35,000 t in November 2021. Year-to-date estimated smelter production was 370,000 t, 30% greater than that through November 2020 (table 3).

Total U.S. refinery output was 84,700 t in November 2021; data for electrolytic and electrowon output, as well as refined production from scrap, are reported in table 4. Average daily refinery production was 2,830 t, a slight decrease compared with that in October and 5% more than that in November 2020 (fig. 1). Year-to-date refinery output was 931,000 t, an increase of 11% relative to the same period in 2020.

## Prices

In November 2021, the average COMEX spot copper price was \$4.37 per pound, slightly less than \$4.45 per pound in October and an increase of 36% from \$3.20 per pound in November 2020 (fig. 2, table 11). The average U.S. dealers buying price of number 2 copper scrap was \$3.31 per pound, 4% higher than \$3.17 per pound in October and 44% greater than \$2.30 per pound in November 2020 (fig. 2, table 12).

## Stocks

Refined copper stocks in the United States totaled 107,000 t at the end of November 2021, an increase of 15% compared with those in October and 18% lower than those in November 2020. COMEX stocks rose by 1,170 t, and London Metal Exchange Ltd. stocks in U.S. warehouses increased by 14,400 t from those at the end of October (fig. 3, table 10).

## Industry News

**United States.**—On November 4, Capstone Mining Corp. announced that it had received final approval from the United States Forest Service to extend operations at the Pinto Valley Mine in Arizona to 2039. The company expected to produce about 1.1 Mt of copper during the remaining life of the mine (Capstone Mining Corp., 2021).

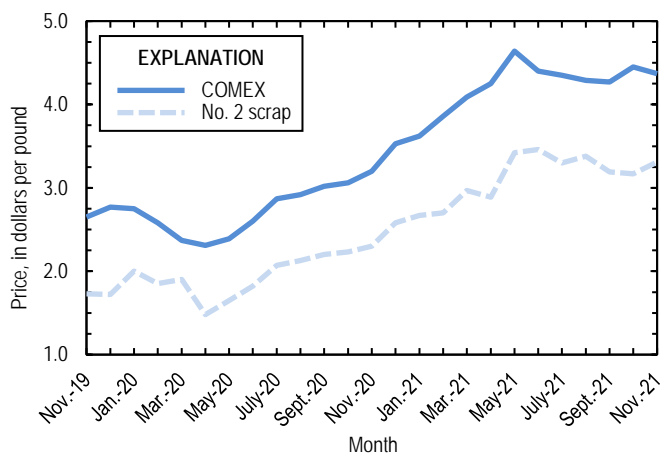


Figure 2. Monthly average COMEX copper price and no. 2 copper scrap dealers buying price from November 2019 through November 2021. As of January 2020, no. 2 prices were available only for the entire United States, whereas no. 2 prices were available only for individual domestic markets prior to January 2020. Prices shown prior to January 2020 are for New York dealers no. 2 scrap. Sources: Fastmarkets-AMM and S&P Global Platts Metals Week.

## References Cited

- Capstone Mining Corp., 2021, Capstone's Pinto Valley Mine receives new US Forest Service mine plan of operations to fully permit mine life to 2039: Vancouver, British Columbia, Canada, Capstone Mining Corp. news release, November 4, 3 p. (Accessed March 2, 2022, at [https://s25.q4cdn.com/701614211/files/doc\\_news/2021/11/PV-New-Mine-Plan-of-Operations-4Nov2021-FINAL.pdf](https://s25.q4cdn.com/701614211/files/doc_news/2021/11/PV-New-Mine-Plan-of-Operations-4Nov2021-FINAL.pdf).)
- Grupo México, S.A.B. de C.V., 2021, Reporte anual 2020 [Annual report 2020]: Mexico City, Mexico, Grupo México, S.A.B. de C.V., 329 p. (Accessed June 4, 2021, via <https://www.gmexico.com/en/Pages/financial-reports.aspx>.) [In Spanish.]

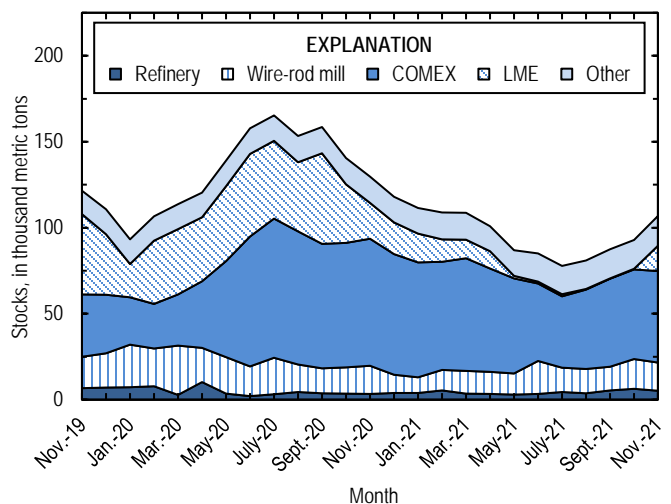


Figure 3. Domestic refined copper stocks at end of month, by type, from November 2019 through November 2021. Sources: Fastmarkets-AMM, London Metal Exchange Ltd., and U.S. Geological Survey.

List services and web feed subscribers are the first to receive notification of USGS minerals information publications and data releases. For information on how to subscribe, go to <https://www.usgs.gov/centers/national-minerals-information-center/minerals-information-publication-list-services>.

TABLE 1  
SALIENT STATISTICS OF THE COPPER INDUSTRY IN THE UNITED STATES<sup>1</sup>

(Metric tons of copper content, unless otherwise specified)

	Source table <sup>2</sup>	2020 <sup>p</sup>	2021			
			September	October	November	January– November
Production:						
Primary:						
Mine, recoverable	(2)	1,200,000	107,000	102,000	101,000	1,110,000
Smelter <sup>c</sup>	(3)	315,000	35,000	35,000	35,000	370,000
Refinery:						
Electrolytic, domestic and foreign <sup>c</sup>	(4)	315,000	35,000	35,000	35,000	370,000
Electrowon	(4)	559,000	49,000 <sup>r</sup>	50,400	45,700	516,000
Total	(4)	874,000	84,000 <sup>r</sup>	85,400	80,700	886,000
Secondary recoverable copper: <sup>3</sup>						
Refineries	(5)	43,200	4,590	3,540	3,990	44,900
Ingot makers <sup>4</sup>	(5)	57,900	4,820	4,820	4,820	53,100
Brass and wire-rod mills	(5)	670,000	54,600	55,500 <sup>r</sup>	54,200	607,000
Foundries, etc. <sup>4</sup>	(5)	36,700	3,060	3,060	3,060	33,600
Consumption:						
Apparent, primary refined and copper from old scrap	(8)	1,660,000	180,000	182,000 <sup>r</sup>	137,000	1,850,000
Reported, refined copper	(7)	1,710,000	157,000	149,000	150,000	1,650,000
Purchased copper-base scrap (gross weight)	(9)	938,000	84,500	84,000 <sup>r</sup>	85,100	928,000
Stocks at end of period:						
Total refined	(10)	118,000	87,400	92,900 <sup>r</sup>	107,000	107,000
Blister and anode	(10)	9,380	23,500	20,900	15,900	15,900
Price, U.S. producers cathode (cents per pound) <sup>5</sup>	(11)	286.745	434.888	453.612	445.074	431.395
Imports: <sup>6</sup>						
Ore and concentrates	(13)	2,170	1,210	1,060	439	11,000
Refined	(13)	676,000	90,700	92,300	60,000	842,000
Exports: <sup>6</sup>						
Ore and concentrates	(14)	383,000	24,600	19,600	29,000	320,000
Refined	(14)	41,200	2,300	3,490	2,630	43,900

<sup>c</sup>Estimated. <sup>p</sup>Preliminary. <sup>r</sup>Revised.

<sup>1</sup>Data are rounded to no more than three significant digits, except prices; may not add to totals shown.

<sup>2</sup>Numbers in parentheses refer to the tables where these data are located.

<sup>3</sup>Copper recovered from copper-base scrap only.

<sup>4</sup>Estimated based on the monthly average of 2018 annual data.

<sup>5</sup>Source: S&P Global Platts Metals Week.

<sup>6</sup>Source: U.S. Census Bureau.

TABLE 2  
MINE PRODUCTION OF RECOVERABLE COPPER IN THE UNITED STATES<sup>1</sup>

(Metric tons)

Period	Recoverable copper			Contained copper		
	Arizona	Others <sup>2</sup>	Total	Electrowon	Concentrates <sup>3</sup>	Total
2020: <sup>p</sup>						
January–November	805,000	296,000 <sup>r</sup>	1,100,000	511,000	615,000 <sup>r</sup>	1,130,000 <sup>r</sup>
November	69,900	26,100 <sup>r</sup>	96,100 <sup>r</sup>	47,100	50,900 <sup>r</sup>	98,000 <sup>r</sup>
December	75,000	25,500 <sup>r</sup>	100,000	48,400	54,100 <sup>r</sup>	103,000 <sup>r</sup>
January–December	880,000	322,000 <sup>r</sup>	1,200,000	559,000	669,000 <sup>r</sup>	1,230,000 <sup>r</sup>
2021:						
January	71,600	25,100	96,700	47,100	51,700	98,800
February	70,600	25,700	96,400	43,900	54,700	98,500
March	76,200	27,900	104,000	46,500	59,900	106,000
April	66,900	28,600	95,500	44,000	53,600	97,600
May	68,400	30,600	99,000	44,400	56,800	101,000
June	74,200	29,200 <sup>r</sup>	103,000	46,600	59,000 <sup>r</sup>	106,000 <sup>r</sup>
July	68,200	31,000 <sup>r</sup>	99,200 <sup>r</sup>	47,200	54,100 <sup>r</sup>	101,000
August	76,000	31,800 <sup>r</sup>	108,000	51,300	58,800 <sup>r</sup>	110,000
September	75,400 <sup>r</sup>	32,100 <sup>r</sup>	107,000	49,000 <sup>r</sup>	60,800 <sup>r</sup>	110,000 <sup>r</sup>
October	72,100	29,700 <sup>r</sup>	102,000	50,400	53,400 <sup>r</sup>	104,000
November	72,500	28,800	101,000	45,700	57,700	103,000
January–November	792,000	321,000	1,110,000	516,000	620,000	1,140,000

<sup>p</sup>Preliminary. <sup>r</sup>Revised.

<sup>1</sup>Data are rounded to no more than three significant digits; may not add to totals shown.

<sup>2</sup>Includes production from Michigan, Missouri, Montana, Nevada, New Mexico, and Utah.

<sup>3</sup>Includes copper content of precipitates and other metal concentrates.

TABLE 3  
COPPER PRODUCED AT SMELTERS IN  
THE UNITED STATES<sup>1, 2</sup>

(Metric tons, copper content)

Period	Anode production <sup>e, 3</sup>
2020: <sup>p</sup>	
January–November	285,000
November	30,000
December	30,000
January–December	315,000
2021:	
January	35,000
February	35,000
March	35,000
April	30,000
May	30,000
June	30,000
July	35,000
August	35,000
September	35,000
October	35,000
November	35,000
January–November	370,000

<sup>e</sup>Estimated. <sup>p</sup>Preliminary.

<sup>1</sup>Data are rounded to no more than three significant digits; may not add to totals shown.

<sup>2</sup>Includes blister and copper anode from primary or secondary sources.

<sup>3</sup>To avoid disclosing company proprietary data, monthly smelter production data are estimates based on information in quarterly public company reports and do not reflect actual production reported to the U.S. Geological Survey.

TABLE 4  
U.S. PRODUCTION OF REFINED COPPER, BY SOURCE AND METHOD OF RECOVERY<sup>1</sup>

(Metric tons)

Period	Primary materials			Scrap	Total refined
	Electrolytically refined <sup>e, 2, 3</sup>	Electrowon	Total		
2020: <sup>p</sup>					
January–November	285,000	511,000	796,000	39,900	836,000
November	30,000	47,100	77,100	3,290	80,400
December	30,000	48,400	78,400	3,300	81,700
January–December	315,000	559,000	874,000	43,200	918,000
2021:					
January	35,000	47,100	82,100	3,350	85,400
February	35,000	43,900	78,900	4,060	82,900
March	35,000	46,500	81,500	3,460	85,000
April	30,000	44,000	74,000	5,190	79,200
May	30,000	44,400	74,400	4,560	79,000
June	30,000	46,600	76,600	5,060	81,700
July	35,000	47,200	82,200	3,340	85,500
August	35,000	51,300	86,300	3,750	90,000
September	35,000	49,000 <sup>r</sup>	84,000 <sup>r</sup>	4,590	88,500
October	35,000	50,400	85,400	3,540	88,900
November	35,000	45,700	80,700	3,990	84,700
January–November	370,000	516,000	886,000	44,900	931,000

<sup>e</sup>Estimated. <sup>p</sup>Preliminary. <sup>r</sup>Revised.

<sup>1</sup>Data are rounded to no more than three significant digits; may not add to totals shown.

<sup>2</sup>From domestic and foreign source materials.

<sup>3</sup>To avoid disclosing company proprietary data, monthly electrolytically refined production data are estimates based on information in quarterly public company reports and do not reflect actual production reported to the U.S. Geological Survey.

TABLE 5  
COPPER RECOVERABLE IN UNALLOYED AND ALLOYED FORM FROM PURCHASED COPPER-BASE SCRAP  
IN THE UNITED STATES<sup>1</sup>

(Metric tons, copper content)

Period	Refineries <sup>2</sup>		Ingot makers <sup>3</sup>		Brass and wire-rod mills		Foundries, etc. <sup>3</sup>		Total <sup>4</sup>
	New scrap <sup>e</sup>	Old scrap	New scrap	Old scrap	New scrap	Old scrap	New scrap	Old scrap	
2020: <sup>p</sup>									
January–November	18,400	21,500	8,450	44,600	576,000	35,500	23,600	10,000	738,000
November	1,680	1,620	768	4,060	52,900	3,000	2,150	913	67,100
December	1,680	1,620	768	4,060	55,800	2,590	2,150	913	69,600
January–December	20,100	23,100	9,220	48,700	631,000	38,100	25,800	11,000	807,000
2021:									
January	1,680	1,670	768	4,060	53,700	4,110	2,150	913	69,000
February	1,680	2,380	768	4,060	51,700	3,500	2,150	913	67,100
March	1,680	1,780	768	4,060	53,100	3,870	2,150	913	68,300
April	1,680	3,510	768	4,060	51,900	3,870	2,150	913	68,900
May	1,680	2,890	768	4,060	50,800	3,710	2,150	913	66,900
June	1,680	3,390	768	4,060	50,200	3,560	2,150	913	66,700
July	1,680	1,660	768	4,060	50,500	3,420	2,150	913	65,100
August	1,680	2,080	768	4,060	50,700	3,640	2,150	913	66,000
September	1,680	2,910	768	4,060	51,400	3,180	2,150	913	67,000
October	1,680	1,860	768	4,060	52,000 <sup>r</sup>	3,550 <sup>r</sup>	2,150	913	66,900 <sup>r</sup>
November	1,680	2,320	768	4,060	51,100	3,150	2,150	913	66,100
January–November	18,400	26,400	8,450	44,600	567,000	39,600	23,600	10,000	738,000

<sup>e</sup>Estimated. <sup>p</sup>Preliminary. <sup>r</sup>Revised.

<sup>1</sup>Data are rounded to no more than three significant digits; may not add to totals shown.

<sup>2</sup>Electrolytically refined and fire refined from scrap based on source of material at smelter or refinery level.

<sup>3</sup>Monthly data estimated based on the monthly average of 2018 annual data.

<sup>4</sup>Does not include an estimate, based on reported 2018 annual data, of 3,380 tons per month from new scrap and 2,710 tons per month from old scrap of copper recovered from scrap other than copper-base.

TABLE 6  
U.S. PRODUCTION, SHIPMENTS, AND STOCKS OF BRASS AND WIRE-ROD SEMIFABRICATES<sup>1</sup>

(Metric tons, gross weight)

Period	Production		Shipments		Stocks, end of period	
	Brass mills	Wire-rod mills	Brass mills	Wire-rod mills	Brass mills	Wire-rod mills
2020: <sup>p</sup>						
January–November	811,000	1,140,000	811,000	1,150,000	29,000	16,000
November	73,600	106,000	73,600	106,000	29,000	16,000
December	73,700	101,000	74,000	97,800	28,700	19,000
January–December	884,000	1,240,000	885,000	1,240,000	28,700	19,000
2021:						
January	73,900	104,000	74,000	104,000 <sup>r</sup>	28,300	16,800
February	74,100	96,600	73,800	97,600	28,600	15,800
March	74,700	125,000	74,500	122,000	28,800	17,800
April	75,000	110,000	75,300	113,000	28,500	15,200
May	73,200	117,000	73,300	114,000	28,400	18,300
June	74,200	110,000	74,000	109,000	28,500	19,100
July	74,600	112,000	74,800	115,000	28,400	17,000
August	76,000	118,000	75,800	114,000	28,500	21,200
September	74,000	118,000	74,300	120,000	28,300	18,800
October	74,600 <sup>r</sup>	115,000	74,400 <sup>r</sup>	110,000	28,500 <sup>r</sup>	23,400
November	74,500	116,000	74,300	110,000	28,700	29,200
January–November	819,000	1,240,000	819,000	1,230,000	28,700	29,200

<sup>p</sup>Preliminary. <sup>r</sup>Revised.

<sup>1</sup>Data are rounded to no more than three significant digits; may not add to totals shown.



TABLE 7  
U.S. CONSUMPTION OF REFINED COPPER<sup>1</sup>

(Metric tons)

Period	Brass mills	Wire-rod mills	Other plants <sup>2</sup>	Total
2020: <sup>p</sup>				
January–November	378,000	1,130,000	59,900	1,570,000
November	34,600	105,000	5,450	145,000
December	34,800	99,900	5,450	140,000
January–December	413,000	1,230,000	65,400	1,710,000
2021:				
January	34,700	101,000 <sup>r</sup>	5,450	141,000 <sup>r</sup>
February	34,900	96,100	5,450	137,000
March	35,300	119,000	5,450	159,000
April	34,300	108,000	5,450	148,000
May	34,100	119,000	5,450	159,000
June	33,600	116,000	5,450	155,000
July	34,400	108,000	5,450	147,000
August	34,500	113,000	5,450	153,000
September	34,700	117,000	5,450	157,000
October	34,700	109,000	5,450	149,000
November	34,300	110,000	5,450	150,000
January–November	380,000	1,210,000	59,900	1,650,000

<sup>p</sup>Preliminary. <sup>r</sup>Revised.

<sup>1</sup>Data are rounded to no more than three significant digits; may not add to totals shown.

<sup>2</sup>Monthly consumption data by ingot makers, chemical plants, foundries, and miscellaneous manufacturers are estimated based on the monthly average of 2018 annual data.

TABLE 8  
U.S. APPARENT CONSUMPTION OF COPPER<sup>1</sup>

(Metric tons)

Period	Primary refined copper production	Copper in old scrap <sup>2</sup>	Refined imports for consumption <sup>3</sup>	Refined exports <sup>3</sup>	Stock change during period	Apparent consumption
2020: <sup>p</sup>						
January–November	796,000	141,000	619,000	36,000	19,100	1,500,000
November	77,100	12,300	53,300	3,090	-10,800	150,000
December	78,400	11,900	57,400	5,150	-11,700	154,000
January–December	874,000	153,000	676,000	41,200	7,370	1,660,000
2021:						
January	82,100	13,500	42,400	4,350	-6,490	140,000
February	78,900	13,600	73,000	2,970	-2,600	165,000
March	81,500	13,300	99,700	3,360	-178	191,000
April	74,000	15,100	85,200	5,280	-7,710	177,000
May	74,400	14,300	66,600	5,580	-14,100	164,000
June	76,600	14,600	69,600	6,880	-1,900	156,000
July	82,200	12,800	57,100	5,270	-7,220	154,000
August	86,300	13,400	105,000	1,830	3,130	200,000
September	84,000 <sup>r</sup>	13,800	90,700	2,300	6,480	180,000
October	85,400	13,100 <sup>r</sup>	92,300	3,490	5,510 <sup>r</sup>	182,000 <sup>r</sup>
November	80,700	13,100	60,000	2,630	13,900	137,000
January–November	886,000	150,000	842,000	43,900	-11,100	1,850,000

<sup>p</sup>Preliminary. <sup>r</sup>Revised.

<sup>1</sup>Data are rounded to no more than three significant digits; may not add to totals shown.

<sup>2</sup>Copper recovered from old scrap and converted to refined metal and alloys. Includes reported monthly production of copper from old scrap of copper-base, an estimate for annual reporters, and a monthly average of copper from non-copper-base materials based on 2018 annual data.

<sup>3</sup>Source: U.S. Census Bureau.

TABLE 9  
U.S. CONSUMPTION OF PURCHASED COPPER-BASE SCRAP<sup>1</sup>

(Metric tons, gross weight)

Period	Smelters and refineries		Ingot makers <sup>2</sup>		Brass and wire-rod mills <sup>3</sup>		Foundries, etc. <sup>2</sup>		Total scrap used
	New scrap <sup>c</sup>	Old scrap	New scrap	Old scrap	New scrap	Old scrap	New scrap	Old scrap	
2020: <sup>p</sup>									
January–November	19,000	22,100	22,600	52,700	665,000	37,200	28,200	11,100	858,000
November	1,730	1,670	2,050	4,790	60,900	3,130	2,570	1,010	77,900
December	1,730	1,670	2,050	4,790	64,000	2,750	2,570	1,010	80,500
January–December	20,700	23,800	24,600	57,500	729,000	39,900	30,800	12,100	938,000
2021:									
January	1,730	1,720	2,050	4,790	68,000	4,190	2,570	1,010	86,000
February	1,730	2,460	2,050	4,790	63,600	3,580	2,570	1,010	81,800
March	1,730	1,830	2,050	4,790	68,000	3,970	2,570	1,010	85,900
April	1,730	3,620	2,050	4,790	65,300	4,010	2,570	1,010	85,100
May	1,730	2,980	2,050	4,790	67,900	3,820	2,570	1,010	86,900
June	1,730	3,490	2,050	4,790	65,900	3,680	2,570	1,010	85,200
July	1,730	1,710	2,050	4,790	64,800	3,520	2,570	1,010	82,200
August	1,730	2,140	2,050	4,790	62,900	3,750	2,570	1,010	80,900
September	1,730	3,000	2,050	4,790	66,100	3,260	2,570	1,010	84,500
October	1,730	1,920	2,050	4,790	66,300 <sup>r</sup>	3,630 <sup>r</sup>	2,570	1,010	84,000 <sup>r</sup>
November	1,730	2,390	2,050	4,790	67,300	3,240	2,570	1,010	85,100
January–November	19,000	27,300	22,600	52,700	726,000	40,600	28,200	11,100	928,000

<sup>c</sup>Estimated. <sup>p</sup>Preliminary. <sup>r</sup>Revised.

<sup>1</sup>Data are rounded to no more than three significant digits; may not add to totals shown.

<sup>2</sup>Monthly data estimated based on the monthly average of 2018 annual data.

<sup>3</sup>Consumption at brass and wire-rod mills assumed equal to receipts.

TABLE 10  
COPPER STOCKS IN THE UNITED STATES AT END OF PERIOD<sup>1</sup>

(Metric tons)

Period	Blister and anode <sup>2</sup>	Refined copper					LME <sup>4</sup>	Total refined
		Refineries	Wire-rod mills	Brass mills	Other <sup>3</sup>	Comex		
2020: <sup>p</sup>								
November	12,500	3,420	16,200	8,100	7,070	74,000	20,900	130,000
December	9,380	3,850	10,700	7,850	7,070	70,200	18,300	118,000
2021:								
January	17,400	3,810	9,190	7,970	7,070	66,800	16,700	111,000
February	23,800	5,310	11,900	8,610	7,070	62,900	13,100	109,000
March	29,200	3,470	13,200	8,570	7,070	65,500	10,900	109,000
April	27,100	3,360	12,800	7,550	7,070	60,200	9,950	101,000
May	27,100	2,930	12,400	7,850	7,070	55,100	1,630	86,900
June	10,300	3,260	19,300	9,190	7,070	45,000	1,180	85,000
July	12,300	4,540	14,000	9,430	7,070	41,600	1,180	77,800
August	22,600	3,620	14,200	9,570	7,070	46,100	400	80,900
September	23,500	5,400	13,700	9,910	7,070	51,200	125	87,400
October	20,900	6,400	17,200 <sup>r</sup>	9,840 <sup>r</sup>	7,070	52,100	325	92,900 <sup>r</sup>
November	15,900	5,250	16,300	10,300	7,070	53,200	14,700	107,000

<sup>p</sup>Preliminary. <sup>r</sup>Revised.

<sup>1</sup>Data are rounded to no more than three significant digits; may not add to totals shown.

<sup>2</sup>Copper content.

<sup>3</sup>Monthly estimates based on 2018 annual data, comprising stocks at ingot makers, chemical plants, foundries, and miscellaneous manufacturers.

<sup>4</sup>London Metal Exchange Ltd., U.S. warehouses.

TABLE 11  
AVERAGE PRICE OF COPPER IN THE UNITED STATES  
AND ON THE LONDON METAL EXCHANGE

(Cents per pound)

Period	U.S. producers cathode <sup>1</sup>	Comex first position <sup>2</sup>	LME cash price Grade A
2020:			
November	327.338	320.338	320.392
December	360.470	353.470	351.772
Year	286.745	279.948	279.797
2021:			
January	369.318	362.318	361.536
February	393.314	386.126	383.750
March	416.141	408.828	408.459
April	432.183	424.783	423.453
May	471.410	463.535	461.937
June	448.082	439.832	436.012
July	443.779	435.479	427.900
August	437.543	429.230	424.435
September	434.888	426.538	422.916
October	453.612	445.112	443.497
November	445.074	436.574	442.914
January–November	431.395	423.487	421.528

<sup>1</sup>Sum of “Comex high grade first position” and “NY dealer premium cathode.”

<sup>2</sup>Listed as “Comex high grade first position.”

Source: S&P Global Platts Metals Week.

TABLE 12  
AVERAGE BUYING PRICES FOR COPPER SCRAP IN THE UNITED STATES

(Cents per pound)

Period	Brass mills No. 1 scrap	Refiners No. 2 scrap	Dealers	
			No. 2 scrap	Red brass turnings and borings
2020:				
November	306.26	277.53	230.00	139.47
December	339.98	314.75	258.18	165.45
Year	268.76	243.47	201.72	130.67
2021:				
January	349.74	320.61	266.50	167.00
February	370.89	338.87	270.00	175.00
March	392.04	351.52	296.50	185.50
April	406.52	365.52	289.00	186.50
May	444.95	405.23	341.50	239.00
June	421.77	381.68	345.50	230.50
July	417.36	374.12	330.00	227.00
August	410.36	368.41	337.50	238.00
September	409.62	368.38	319.00	229.00
October	430.88	390.64	316.50	222.00
November	423.05	383.05	330.50	222.00
January–November	407.02	368.00	312.95	211.05

Source: Fastmarkets-AMM.

TABLE 13  
U.S. IMPORTS FOR CONSUMPTION OF COPPER (UNMANUFACTURED), BY CLASS<sup>1</sup>

(Metric tons, copper content)

Country or locality	Ore and concentrates <sup>2</sup>			Matte, ash, and precipitates <sup>3</sup>			Blister and anodes <sup>4</sup>			Refined <sup>5</sup>		
	2021			2021			2021			2021		
	2020	November	January– November	2020	November	January– November	2020	November	January– November	2020	November	January– November
Bahrain	--	--	--	--	--	--	--	--	--	76	--	--
Belgium	--	--	--	354	39	236	--	--	--	--	29	29
Bolivia	--	--	--	--	--	--	--	--	--	1,030	--	763
Canada	2,170	439	11,000	459	114	548	(6)	--	(6)	149,000	11,500	135,000
Chile	--	--	--	--	--	--	--	--	--	410,000	29,200	570,000
China	--	--	--	(6)	--	--	--	--	--	426	84	606
Congo (Kinshasa)	--	--	--	--	--	--	--	--	--	148	378	19,700
Finland	--	--	--	--	--	--	275	63	356	--	--	35
Germany	--	--	--	--	--	155	(6)	--	(6)	1,910	294	1,930
Japan	--	--	1	176	--	483	(6)	1	1	2,060	247	1,330
Korea, Republic of	--	--	--	--	--	--	(6)	--	(6)	72	--	54
Mexico	--	--	--	(6)	(6)	8	(6)	(6)	(6)	95,200	7,030	69,600
Peru	--	--	--	--	--	--	--	--	--	14,500	2,070	22,200
Spain	--	--	--	49	--	--	--	--	--	654	--	(6)
Other	--	--	10	22	5	48	5	2	11	50	9,140	20,000
Total	2,170	439	11,000	1,060	158	1,480	281	65	368	676,000	60,000	842,000

-- Zero.

<sup>1</sup>Data are rounded to no more than three significant digits; may not add to totals shown.

<sup>2</sup>Harmonized Tariff Schedule of the United States (HTS) code 2603.00.0010. Includes copper ore and concentrates only; excludes copper contained in ore and concentrates of other metals.

<sup>3</sup>HTS codes 2620.30.0010 and 7401.00.0000. Includes copper matte, ash, and precipitates only; excludes the copper content of mattes and ashes of other metals.

<sup>4</sup>HTS code 7402.00.0000.

<sup>5</sup>HTS codes 7403.11.0000, 7403.12.0000, 7403.13.0000, and 7403.19.0000.

<sup>6</sup>Less than ½ unit.

Source: U.S. Census Bureau.

TABLE 14  
U.S. EXPORTS OF COPPER (UNMANUFACTURED), BY CLASS<sup>1</sup>

(Metric tons, copper content)

Country or locality	Ore and concentrates <sup>2</sup>			Matte, ash, and precipitates <sup>3</sup>			Blister and anodes <sup>4</sup>			Refined <sup>5</sup>		
	2021			2021			2021			2021		
	2020	November	January– November	2020	November	January– November	2020	November	January– November	2020	November	January– November
Belgium	230	29	234	6,110	568	5,590	190	11	1,480	64	--	--
Bulgaria	4,350	--	--	(6)	--	--	--	--	--	--	--	--
Canada	36,100	2,630	35,800	13,100	468	15,400	1,690	2,600	18,300	12,600	95	24,500
China	49,300	2,460	56,700	62	62	491	148	21	171	233	172	2,180
Germany	--	--	784	288	49	421	128	20	170	22	--	20
Hong Kong	9	--	2	--	--	44	86	11	310	18	6	9
India	20	--	--	37	--	30	247	--	413	--	--	--
Italy	--	--	--	--	--	--	197	--	113	86	--	22
Japan	14,600	2,680	6,350	251	3	704	24	--	17	4	1	11
Korea, Republic of	8,140	--	2,370	1	57	138	1,390	80	1,250	1,160	1	30
Malaysia	--	--	5	3	--	47	218	--	168	--	1	8
Mexico	250,000	18,800	213,000	2,720	--	33	848	38	258	26,800	2,340	16,800
Philippines	6,250	2,350	2,350	--	(6)	1	10	5	39	--	--	--
Singapore	--	--	--	256	--	300	36	22	92	13	(6)	19
Slovakia	--	--	--	1,050	203	1,370	--	--	--	--	--	--
Spain	8,990	--	--	1,820	194	1,080	35	--	20	--	(6)	(6)
Sweden	--	--	--	--	--	--	135	--	72	--	--	1
Thailand	--	--	--	2	--	--	256	--	26	(6)	--	--
Other	4,630	9	2,550	172	(6)	215	565	27	811	164	8	389
Total	383,000	29,000	320,000	25,900	1,600	25,900	6,210	2,840	23,700	41,200	2,630	43,900

-- Zero.

<sup>1</sup>Data are rounded to no more than three significant digits; may not add to totals shown.

<sup>2</sup>Schedule B of the United States code 2603.00.0010. Includes copper ore and concentrates only; excludes copper contained in ore and concentrates of other metals.

<sup>3</sup>Schedule B codes 2620.30.0000, 7401.00.0010, and 7401.00.0050. Includes copper matte, ash, and precipitates only; excludes the copper content of mattes and ashes of other metals.

<sup>4</sup>Schedule B code 7402.00.0000.

<sup>5</sup>Schedule B codes 7403.11.0000, 7403.12.0000, 7403.13.0000, and 7403.19.0000.

<sup>6</sup>Less than ½ unit.

Source: U.S. Census Bureau.



TABLE 15  
U.S. IMPORTS FOR CONSUMPTION OF COPPER SCRAP<sup>1</sup>

(Metric tons, gross weight)

Country or locality	Unalloyed <sup>2</sup>			Alloyed <sup>3</sup>		
	2021		January– November	2021		January– November
	2020	November		2020	November	
Antigua and Barbuda	--	--	--	151	--	111
Bahamas	--	--	--	681	55	560
Brazil	--	--	15	164	12	107
Canada	14,500	1,630	18,600	41,300	3,970	45,100
Cayman Islands	4	--	--	262	15	207
Colombia	60	20	174	808	23	598
Costa Rica	619	56	695	934	117	1,370
Dominican Republic	876	134	1,360	1,150	321	2,420
Ecuador	--	--	79	154	20	255
El Salvador	--	--	--	294	40	506
Germany	179	18	192	108	--	148
Guatemala	--	--	--	289	--	449
Honduras	54	1	71	844	35	774
Jamaica	--	--	7	258	14	125
Mexico	9,450	897	11,600	37,100	3,430	40,800
Nicaragua	114	--	17	--	17	98
Panama	714	107	952	335	44	458
Peru	495	--	19	251	62	341
Vietnam	121	--	107	22	--	59
Other	362	127	1,040	1,400	453	2,600
Total	27,600	2,990	34,900	86,500	8,630	97,100

-- Zero.

<sup>1</sup>Data are rounded to no more than three significant digits; may not add to totals shown.

<sup>2</sup>Harmonized Tariff Schedule of the United States (HTS) codes 7404.00.3020 and 7404.00.6020.

<sup>3</sup>HTS codes 7404.00.3045, 7404.00.3055, 7404.00.3065, 7404.00.3090, 7404.00.6045, 7404.00.6055, 7404.00.6065, and 7404.00.6090.

Source: U.S. Census Bureau.

TABLE 16  
U.S. EXPORTS OF COPPER SCRAP<sup>1</sup>

(Metric tons, gross weight)

Country or locality	Unalloyed <sup>2</sup>							Alloyed <sup>3</sup>				
	2021							2021				
	2020	No. 1		No. 2		Other		2020	Segregated		Unsegregated	
		November	January– November	November	January– November	November	January– November		November	January– November	November	January– November
Austria	3,970	--	59	20	1,050	--	143	1,010	--	135	--	58
Belgium	20,900	940	7,260	1,150	6,680	1,120	4,440	11,100	181	917	1,100	7,060
Canada	51,800	--	--	--	--	4,480	57,200	32,200	--	--	4,280	49,200
China	81,200	5,930	44,300	5,330	42,800	9,760	87,500	35,400	1,870	17,100	2,140	24,700
Germany	22,400	721	11,700	143	2,240	77	3,770	16,000	328	2,010	904	11,700
Greece	13,000	462	6,170	410	2,950	374	4,640	1,450	--	114	61	1,790
Hong Kong	7,810	328	2,950	660	8,680	988	10,000	7,750	19	1,870	749	4,630
India	9,570	1,090	4,120	144	1,630	1,410	5,360	34,800	920	14,400	2,850	22,700
Japan	16,400	223	3,070	1,280	12,700	340	2,410	13,800	73	1,120	591	5,840
Korea, Republic of	45,700	1,730	17,100	972	12,600	729	13,800	18,500	634	4,840	1,120	10,600
Malaysia	54,400	551	6,790	611	10,400	2,630	43,400	122,000	1,400	19,200	4,020	63,600
Pakistan	697	117	189	11	227	--	58	14,500	20	245	2,830	22,100
Poland	5,000	192	1,000	196	1,570	723	7,600	6,570	--	118	19	2,130
Russia	7,310	10	123	--	100	41	899	830	--	--	99	629
Spain	4,070	24	444	--	288	132	2,170	7,610	299	2,090	454	4,600
Taiwan	17,000	464	5,260	347	2,280	440	5,180	16,400	249	2,500	252	3,820
Thailand	4,800	38	1,640	82	324	1,300	6,360	20,900	242	1,900	3,530	29,800
Vietnam	7,480	--	757	--	124	--	229	2,340	--	84	--	62
Other	22,900	594	8,560	278	2,100	875	7,110	16,600	429	3,820	1,190	12,600
Total	396,000	13,400	122,000	11,600	109,000	25,400	262,000	380,000	6,660	72,500	26,200	278,000

-- Zero.

<sup>1</sup>Data are rounded to no more than three significant digits; may not add to totals shown.

<sup>2</sup>Schedule B of the United States codes 7404.00.0010 and 7404.00.0015 (no. 1), 7404.00.0025 (no. 2), and 7404.00.0030 (other).

<sup>3</sup>Schedule B codes for segregated alloyed copper scrap are 7404.00.0041, 7404.00.0046, 7404.00.0051, 7404.00.0056, 7404.00.0061, 7404.00.0066, and 7404.00.0075. Schedule B codes for unsegregated alloyed copper scrap are 7404.00.0085 and 7404.00.0095.

Source: U.S. Census Bureau.