

Mineral Industry Surveys

For information, contact:

Daniel M. Flanagan, Copper Commodity Specialist
National Minerals Information Center
U.S. Geological Survey
989 National Center
Reston, VA 20192
Telephone: (703) 648-7726, Fax: (703) 648-7757
Email: dflanagan@usgs.gov

Sheema Merchant (Data)
Telephone: (703) 659-9944
Fax: (703) 648-7975
Email: smerchant@usgs.gov

Internet: <https://www.usgs.gov/centers/national-minerals-information-center>

COPPER IN SEPTEMBER 2021

In September 2021, domestic mine production of recoverable copper was 107,000 metric tons (t). The average daily mine production was 3,570 t, an increase of 3% compared with that in August and 9% higher than that in September 2020 (fig. 1). Year-to-date recoverable mine output was 909,000 t, essentially unchanged from that through September 2020 (table 2).

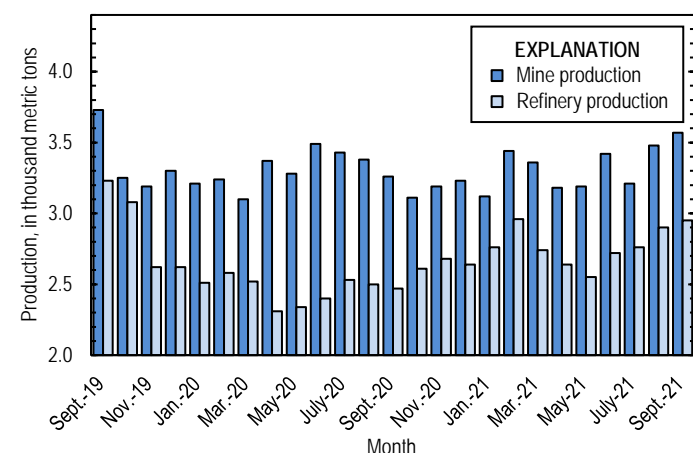


Figure 1. Average daily U.S. copper mine (recoverable) and refinery (primary and secondary) production from September 2019 through September 2021. Refinery production in November and December 2019 were withheld to avoid disclosing company proprietary data; the values shown reflect the daily average for cumulative production over this period rather than production in each month.

Owing to indefinite closures of ASARCO LLC's smelter in Arizona and electrolytic refinery in Texas, smelter and electrolytic refinery production reported to the U.S. Geological Survey in September 2021 were withheld to avoid disclosing company proprietary data. Smelter and electrolytic refinery output in tables 3 and 4 are estimates based on information in quarterly company reports. The facilities shut down in October 2019 because of a worker strike, which ended in July 2020. As of September 2021, ASARCO had not publicly announced when operations were expected to resume or a reason for the

continued closures. The three ASARCO mines in Arizona have continued to operate during the smelter and refinery stoppages (Grupo México, S.A.B. de C.V., 2021, p. 83).

Estimated U.S. smelter production was 35,000 t in September 2021. Year-to-date estimated smelter production was 300,000 t, an increase of 33% from that through September 2020 (table 3).

Total refinery production in the United States was 88,500 t in September 2021; data for electrolytic and electrowon output, as well as refined production from scrap, are reported in table 4. Average daily refinery production was 2,950 t, slightly greater than that in August and 19% more than that in September 2020 (fig. 1). Year-to-date refinery output was 757,000 t, an increase of 12% relative to the same period in 2020 (table 4).

Prices

In September 2021, the average COMEX spot copper price was \$4.27 per pound, slightly lower than \$4.29 per pound in August and an increase of 41% compared with \$3.02 per pound in September 2020 (fig. 2, table 11). The average U.S. dealers buying price of number 2 copper scrap in September 2021 was \$3.19 per pound, a decrease of 5% from \$3.38 per pound in August and 45% higher than \$2.20 per pound in September 2020 (fig. 2, table 12).

Stocks

Refined copper stocks in the United States totaled 87,200 t at the end of September 2021, an increase of 8% from those in August and 45% less than those in September 2020. COMEX stocks rose by 5,130 t (11%), and London Metal Exchange Ltd. stocks in U.S. warehouses decreased by 275 t (69%) compared with those at the end of August (fig. 3, table 10).

Industry News

Chile.—Workers at the Andina Mine, owned by Corporación Nacional del Cobre de Chile (Codelco), initiated a strike on August 12. On September 10, the last striking union reached an agreement with the company. The effect of the strike on copper

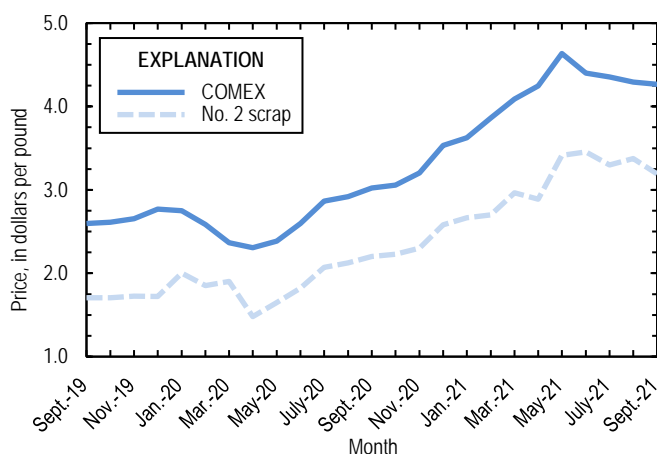


Figure 2. Monthly average COMEX copper price and no. 2 copper scrap dealers buying price from September 2019 through September 2021. As of January 2020, no. 2 prices were available only for the entire United States, whereas no. 2 prices were available only for individual domestic markets prior to January 2020. Prices shown prior to January 2020 are for New York dealers no. 2 scrap. Sources: Fastmarkets-AMM and S&P Global Platts Metals Week.

production was not immediately known. In 2020, Andina was one of the leading global copper mines and produced 184,000 t of copper in concentrates (Corporación Nacional del Cobre de Chile, 2021, p. 28; de Liz, 2021).

United States.—On September 21, operations were temporarily halted at Rio Tinto Group’s smelter in Utah following a release of molten copper. The company declared force majeure on copper cathode and sulfuric acid shipments on September 28. The facility remained closed at the end of the month (Hotter and others, 2021).

References Cited

Corporación Nacional del Cobre de Chile, 2021, Transformación en tiempo de pandemia—Memoria anual 2020 [Transformation in a time of pandemic—Annual report 2020]: Santiago, Chile, Corporación Nacional del Cobre de Chile, 382 p. (Accessed January 19, 2022, at https://www.codelco.com/memoria2020/site/docs/20210422/20210422221511/memoria_anual_codelco_2020.pdf.)

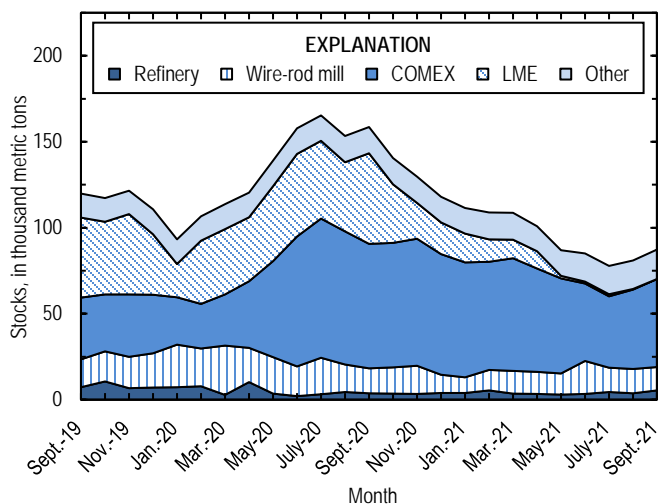


Figure 3. Domestic refined copper stocks at end of month, by type, from September 2019 through September 2021. Sources: Fastmarkets-AMM, London Metal Exchange Ltd., and U.S. Geological Survey.

Grupo México, S.A.B. de C.V., 2021, Reporte anual 2020 [Annual report 2020]: Mexico City, Mexico, Grupo México, S.A.B. de C.V., 429 p. (Accessed June 4, 2021, via <https://www.gmexico.com/en/Pages/financial-reports.aspx>.)

de Liz, Ana, 2021, Last striking union at Andina Cu mine in deal with Codelco: Fastmarkets-AMM, September 13. (Accessed September 17, 2021, via <https://dashboard.fastmarkets.com/home>.)

Hotter, Andrea, Luk, Julian, and Harrison, Alex, 2021, Rio sets force majeure on Utah cathode buys: Fastmarkets-AMM, September 28. (Accessed October 1, 2021, via <https://dashboard.fastmarkets.com/home>.)

List services and web feed subscribers are the first to receive notification of USGS minerals information publications and data releases. For information on how to subscribe, go to <https://www.usgs.gov/centers/national-minerals-information-center/minerals-information-publication-list-services>.

TABLE 1
SALIENT STATISTICS OF THE COPPER INDUSTRY IN THE UNITED STATES¹

(Metric tons of copper content, unless otherwise specified)

	Source table ²	2020 ^P	2021			
			July	August	September	January– September
Production:						
Primary:						
Mine, recoverable	(2)	1,200,000	99,400 ^r	108,000 ^r	107,000	909,000
Smelter ^c	(3)	315,000	35,000	35,000	35,000	300,000
Refinery:						
Electrolytic, domestic and foreign ^c	(4)	315,000	35,000	35,000	35,000	300,000
Electrowon	(4)	559,000	47,200	51,300	48,900	420,000
Total	(4)	874,000	82,200	86,300	83,900	720,000
Secondary recoverable copper: ³						
Refineries	(5)	43,200	3,340	3,750	4,590	37,400
Ingot makers ⁴	(5)	57,900	4,820	4,820	4,820	43,400
Brass and wire-rod mills	(5)	670,000	53,900	54,300	54,600	497,000
Foundries, etc. ⁴	(5)	36,700	3,060	3,060	3,060	27,500
Consumption:						
Apparent, primary refined and copper from old scrap	(8)	1,660,000	15,400	200,000	180,000	1,530,000
Reported, refined copper	(7)	1,710,000	147,000	153,000	159,000	1,350,000
Purchased copper-base scrap (gross weight)	(9)	938,000	82,200	80,900	84,500	759,000
Stocks at end of period:						
Total refined	(10)	118,000	77,800	80,900	87,200	87,200
Blister and anode	(10)	9,380	12,300	22,600	23,500	23,500
Price, U.S. producers cathode (cents per pound) ⁵	(11)	286.745	443.779	437.543	434.888	427.406
Imports: ⁶						
Ore and concentrates	(13)	2,170	1,200	1,810	1,210	9,470
Refined	(13)	676,000	57,100	105,000	90,700	689,000
Exports: ⁶						
Ore and concentrates	(14)	383,000	23,600	21,600	24,600	272,000
Refined	(14)	41,200	5,270	1,830	2,300	37,800

^cEstimated. ^PPreliminary. ^rRevised.

¹Data are rounded to no more than three significant digits, except prices; may not add to totals shown.

²Numbers in parentheses refer to the tables where these data are located.

³Copper recovered from copper-base scrap only.

⁴Estimated based on the monthly average of 2018 annual data.

⁵Source: S&P Global Platts Metals Week.

⁶Source: U.S. Census Bureau.

TABLE 2
MINE PRODUCTION OF RECOVERABLE COPPER IN THE UNITED STATES¹

(Metric tons)

Period	Recoverable copper			Contained copper		
	Arizona	Others ²	Total	Electrowon	Concentrates ³	Total
2020: ^p						
January–September	664,000	241,000	906,000	416,000	509,000	926,000
September	72,600	25,300	97,900	45,700	54,300	100,000
October	71,000	25,500	96,500	47,600	50,800	98,500
November	69,900	25,800	95,700	47,100	50,600	97,700
December	75,000	25,100	100,000	48,400	53,800	102,000
January–December	880,000	318,000	1,200,000	559,000	665,000	1,220,000
2021:						
January	71,600	25,100	96,700	47,100	51,700 ^r	98,800 ^r
February	70,600 ^r	25,700 ^r	96,400	43,900	54,700 ^r	98,500 ^r
March	76,200 ^r	27,900	104,000 ^r	46,500	59,900	106,000
April	66,900 ^r	28,600 ^r	95,500 ^r	44,000 ^r	53,600 ^r	97,600 ^r
May	68,400 ^r	30,600 ^r	99,000 ^r	44,400 ^r	56,800 ^r	101,000 ^r
June	74,200 ^r	28,500 ^r	103,000	46,600 ^r	58,300 ^r	105,000 ^r
July	68,200 ^r	31,200 ^r	99,400 ^r	47,200	54,300 ^r	101,000 ^r
August	76,000 ^r	31,700 ^r	108,000 ^r	51,300	58,700 ^r	110,000 ^r
September	75,300	31,800	107,000	48,900	60,400	109,000
January–September	647,000	261,000	909,000	420,000	508,000	928,000

^pPreliminary. ^rRevised.

¹Data are rounded to no more than three significant digits; may not add to totals shown.

²Includes production from Michigan, Missouri, Montana, Nevada, New Mexico, and Utah.

³Includes copper content of precipitates and other metal concentrates.

TABLE 3
COPPER PRODUCED AT SMELTERS IN
THE UNITED STATES^{1, 2}

(Metric tons, copper content)

Period	Anode production ^{e, 3}
2020: ^p	
January–September	225,000
September	25,000
October	30,000
November	30,000
December	30,000
January–December	315,000
2021:	
January	35,000
February	35,000
March	35,000
April	30,000
May	30,000
June	30,000
July	35,000
August	35,000
September	35,000
January–September	300,000

^eEstimated. ^pPreliminary.

¹Data are rounded to no more than three significant digits; may not add to totals shown.

²Includes blister and copper anode from primary or secondary sources.

³To avoid disclosing company proprietary data, monthly smelter production data are estimates based on information in quarterly public company reports and do not reflect actual production reported to the U.S. Geological Survey.

TABLE 4
U.S. PRODUCTION OF REFINED COPPER, BY SOURCE AND METHOD OF RECOVERY¹

(Metric tons)

Period	Primary materials			Scrap	Total refined
	Electrolytically refined ^{e, 2, 3}	Electrowon	Total		
2020: ^p					
January–September	225,000	416,000	641,000	33,400	674,000
September	25,000	45,700	70,700	3,490	74,200
October	30,000	47,600	77,600	3,220	80,900
November	30,000	47,100	77,100	3,290	80,400
December	30,000	48,400	78,400	3,300	81,700
January–December	315,000	559,000	874,000	43,200	918,000
2021:					
January	35,000	47,100	82,100	3,350	85,400
February	35,000	43,900	78,900	4,060	82,900
March	35,000	46,500	81,500	3,460	85,000
April	30,000	44,000 ^r	74,000 ^r	5,190	79,200 ^r
May	30,000	44,400 ^r	74,400 ^r	4,560	79,000 ^r
June	30,000	46,600 ^r	76,600 ^r	5,060	81,700 ^r
July	35,000	47,200	82,200	3,340	85,500 ^r
August	35,000	51,300	86,300	3,750	90,000
September	35,000	48,900	83,900	4,590	88,500
January–September	300,000	420,000	720,000	37,400	757,000

^eEstimated. ^pPreliminary. ^rRevised.

¹Data are rounded to no more than three significant digits; may not add to totals shown.

²From domestic and foreign source materials.

³To avoid disclosing company proprietary data, monthly electrolytically refined production data are estimates based on information in quarterly public company reports and do not reflect actual production reported to the U.S. Geological Survey.

TABLE 5
COPPER RECOVERABLE IN UNALLOYED AND ALLOYED FORM FROM PURCHASED COPPER-BASE SCRAP
IN THE UNITED STATES¹

(Metric tons, copper content)

Period	Refineries ²		Ingot makers ³		Brass and wire-rod mills		Foundries, etc. ³		Total ⁴
	New scrap ^e	Old scrap	New scrap	Old scrap	New scrap	Old scrap	New scrap	Old scrap	
2020: ^p									
January–September	15,100	18,300	6,910	36,500	469,000	29,000	19,300	8,220	602,000
September	1,680	1,810	768	4,060	50,700	3,300	2,150	913	65,400
October	1,680	1,540	768	4,060	53,600	3,540	2,150	913	68,300
November	1,680	1,620	768	4,060	52,900	3,000	2,150	913	67,100
December	1,680	1,620	768	4,060	55,800	2,590	2,150	913	69,600
January–December	20,100	23,100	9,220	48,700	631,000	38,100	25,800	11,000	807,000
2021:									
January	1,680	1,670	768	4,060	53,700	4,110	2,150	913	69,000
February	1,680	2,380	768	4,060	51,700	3,500	2,150	913	67,100
March	1,680	1,780	768	4,060	53,100	3,870	2,150	913	68,300
April	1,680	3,510	768	4,060	51,900	3,870	2,150	913	68,900
May	1,680	2,890	768	4,060	50,800	3,710	2,150	913	66,900
June	1,680	3,390	768	4,060	50,200	3,560	2,150	913	66,700
July	1,680	1,660	768	4,060	50,500	3,420	2,150	913	65,100
August	1,680	2,080	768	4,060	50,700	3,640	2,150	913	66,000
September	1,680	2,910	768	4,060	51,400	3,180	2,150	913	67,000
January–September	15,100	22,300	6,910	36,500	464,000	32,900	19,300	8,220	605,000

^eEstimated. ^pPreliminary.

¹Data are rounded to no more than three significant digits; may not add to totals shown.

²Electrolytically refined and fire refined from scrap based on source of material at smelter or refinery level.

³Monthly data estimated based on the monthly average of 2018 annual data.

⁴Does not include an estimate, based on reported 2018 annual data, of 3,380 tons per month from new scrap and 2,710 tons per month from old scrap of copper recovered from scrap other than copper-base.

TABLE 6
U.S. PRODUCTION, SHIPMENTS, AND STOCKS OF BRASS AND WIRE-ROD SEMIFABRICATES¹

(Metric tons, gross weight)

Period	Production		Shipments		Stocks, end of period	
	Brass mills	Wire-rod mills	Brass mills	Wire-rod mills	Brass mills	Wire-rod mills
2020: ^p						
January–September	663,000	925,000	663,000	930,000	29,500	18,600
September	73,800	107,000	73,700	108,000	29,500	18,600
October	74,400	108,000	74,900	110,000	29,000	16,400
November	73,600	106,000	73,600	106,000	29,000	16,000
December	73,700	101,000	74,000	97,800	28,700	19,000
January–December	884,000	1,240,000	885,000	1,240,000	28,700	19,000
2021:						
January	73,900	104,000	74,000	106,000	28,300	16,800
February	74,100	96,600	73,800	97,600	28,600	15,800
March	74,700	125,000	74,500	122,000	28,800	17,800
April	75,000	110,000	75,300	113,000	28,500	15,200
May	73,200	117,000	73,300	114,000	28,400	18,300
June	74,200	110,000	74,000	109,000	28,500	19,100
July	74,600	112,000	74,800	115,000	28,400	17,000
August	76,000	118,000	75,800	114,000	28,500	21,200
September	74,000	120,000	74,300	121,000	28,300	20,100
January–September	670,000	1,010,000	670,000	1,010,000	28,300	20,100

^pPreliminary.

¹Data are rounded to no more than three significant digits; may not add to totals shown.

TABLE 7
U.S. CONSUMPTION OF REFINED COPPER¹

(Metric tons)

Period	Brass mills	Wire-rod mills	Other plants ²	Total
2020: ^p				
January–September	309,000	917,000	49,000	1,270,000
September	34,600	106,000	5,450	146,000
October	34,600	106,000	5,450	147,000
November	34,600	105,000	5,450	145,000
December	34,800	99,900	5,450	140,000
January–December	413,000	1,230,000	65,400	1,710,000
2021:				
January	34,700	93,400	5,450	134,000
February	34,900	96,100	5,450	137,000
March	35,300	119,000	5,450	159,000
April	34,300	108,000	5,450	148,000
May	34,100	119,000	5,450	159,000
June	33,600	116,000	5,450	155,000
July	34,400	108,000	5,450	147,000
August	34,500	113,000	5,450	153,000
September	34,700	119,000	5,450	159,000
January–September	310,000	990,000	49,000	1,350,000

^pPreliminary.

¹Data are rounded to no more than three significant digits; may not add to totals shown.

²Monthly consumption data by ingot makers, chemical plants, foundries, and miscellaneous manufacturers are estimated based on the monthly average of 2018 annual data.

TABLE 8
U.S. APPARENT CONSUMPTION OF COPPER¹

(Metric tons)

Period	Primary refined copper production	Copper in old scrap ²	Refined imports for consumption ³	Refined exports ³	Stock change during period	Apparent consumption
2020: ^p						
January–September	641,000	116,000	508,000	30,000	48,000	1,190,000
September	70,700	12,800	39,900	4,570	5,410	113,000
October	77,600	12,800	57,300	2,930	-18,100	163,000
November	77,100	12,300	53,300	3,090	-10,800	150,000
December	78,400	11,900	57,400	5,150	-11,700	154,000
January–December	874,000	153,000	676,000	41,200	7,370	1,660,000
2021:						
January	82,100	13,500	42,400	4,350	-6,490	140,000
February	78,900	13,600	73,000	2,970	-2,600	165,000
March	81,500	13,300	99,700	3,360	-178	191,000
April	74,000 ^r	15,100	85,200	5,280	-7,710	177,000
May	74,400 ^r	14,300	66,600	5,580	-14,100	164,000
June	76,600 ^r	14,600	69,600	6,880	-1,900	156,000
July	82,200	12,800	57,100	5,270	-7,220	154,000
August	86,300	13,400	105,000	1,830	3,130	200,000
September	83,900	13,800	90,700	2,300	6,290	180,000
January–September	720,000	124,000	689,000	37,800	-30,700	1,530,000

^pPreliminary. ^rRevised.

¹Data are rounded to no more than three significant digits; may not add to totals shown.

²Copper recovered from old scrap and converted to refined metal and alloys. Includes reported monthly production of copper from old scrap of copper-base, an estimate for annual reporters, and a monthly average of copper from non-copper-base materials based on 2018 annual data.

³Source: U.S. Census Bureau.

TABLE 9
U.S. CONSUMPTION OF PURCHASED COPPER-BASE SCRAP¹

(Metric tons, gross weight)

Period	Smelters and refineries		Ingot makers ²		Brass and wire-rod mills ³		Foundries, etc. ²		Total scrap used
	New scrap ^c	Old scrap	New scrap	Old scrap	New scrap	Old scrap	New scrap	Old scrap	
2020: ^p									
January–September	15,600	18,900	18,500	43,100	542,000	30,400	23,100	9,060	700,000
September	1,730	1,870	2,050	4,790	58,700	3,410	2,570	1,010	76,100
October	1,730	1,590	2,050	4,790	61,700	3,710	2,570	1,010	79,200
November	1,730	1,670	2,050	4,790	60,900	3,130	2,570	1,010	77,900
December	1,730	1,670	2,050	4,790	64,000	2,750	2,570	1,010	80,500
January–December	20,700	23,800	24,600	57,500	729,000	39,900	30,800	12,100	938,000
2021:									
January	1,730	1,720	2,050	4,790	68,000	4,190	2,570	1,010	86,000
February	1,730	2,460	2,050	4,790	63,600	3,580	2,570	1,010	81,800
March	1,730	1,830	2,050	4,790	68,000	3,970	2,570	1,010	85,900
April	1,730	3,620	2,050	4,790	65,300	4,010	2,570	1,010	85,100
May	1,730	2,980	2,050	4,790	67,900	3,820	2,570	1,010	86,900
June	1,730	3,490	2,050	4,790	65,900	3,680	2,570	1,010	85,200
July	1,730	1,710	2,050	4,790	64,800	3,520	2,570	1,010	82,200
August	1,730	2,140	2,050	4,790	62,900	3,750	2,570	1,010	80,900
September	1,730	3,000	2,050	4,790	66,100	3,260	2,570	1,010	84,500
January–September	15,600	23,000	18,500	43,100	592,000	33,800	23,100	9,060	759,000

^cEstimated. ^pPreliminary.

¹Data are rounded to no more than three significant digits; may not add to totals shown.

²Monthly data estimated based on the monthly average of 2018 annual data.

³Consumption at brass and wire-rod mills assumed equal to receipts.

TABLE 10
COPPER STOCKS IN THE UNITED STATES AT END OF PERIOD¹

(Metric tons)

Period	Blister and anode ²	Refined copper					LME ⁴	Total refined
		Refineries	Wire-rod mills	Brass mills	Other ³	Comex		
2020: ^P								
September	13,500	3,730	14,500	8,200	7,070	72,400	52,700	159,000
October	15,200	3,460	15,300	8,170	7,070	72,500	34,000	140,000
November	12,500	3,420	16,200	8,100	7,070	74,000	20,900	130,000
December	9,380	3,850	10,700	7,850	7,070	70,200	18,300	118,000
2021:								
January	17,400	3,810	9,190	7,970	7,070	66,800	16,700	111,000
February	23,800	5,310	11,900	8,610	7,070	62,900	13,100	109,000
March	29,200	3,470	13,200	8,570	7,070	65,500	10,900	109,000
April	27,100	3,360	12,800	7,550	7,070	60,200	9,950	101,000
May	27,100	2,930	12,400	7,850	7,070	55,100	1,630	86,900
June	10,300	3,260	19,300	9,190	7,070	45,000	1,180	85,000
July	12,300	4,540	14,000	9,430	7,070	41,600	1,180	77,800
August	22,600	3,620	14,200	9,570	7,070	46,100	400	80,900
September	23,500	5,400	13,500	9,910	7,070	51,200	125	87,200

^PPreliminary.

¹Data are rounded to no more than three significant digits; may not add to totals shown.

²Copper content.

³Monthly estimates based on 2018 annual data, comprising stocks at ingot makers, chemical plants, foundries, and miscellaneous manufacturers.

⁴London Metal Exchange Ltd., U.S. warehouses.

TABLE 11
AVERAGE PRICE OF COPPER IN THE UNITED STATES
AND ON THE LONDON METAL EXCHANGE

(Cents per pound)

Period	U.S. producers cathode ¹	Comex first position ²	LME cash price Grade A
2020:			
September	309.052	302.302	304.470
October	312.495	305.695	304.033
November	327.338	320.338	320.392
December	360.470	353.470	351.772
Year	286.745	279.948	279.797
2021:			
January	369.318	362.318	361.536
February	393.314	386.126	383.750
March	416.141	408.828	408.459
April	432.183	424.783	423.453
May	471.410	463.535	461.937
June	448.082	439.832	436.012
July	443.779	435.479	427.900
August	437.543	429.230	424.435
September	434.888	426.538	422.916
January–September	427.406	419.630	416.711

¹Sum of “Comex high grade first position” and “NY dealer premium cathode.”

²Listed as “Comex high grade first position.”

Source: S&P Global Platts Metals Week.

TABLE 12
AVERAGE BUYING PRICES FOR COPPER SCRAP IN THE UNITED STATES

(Cents per pound)

Period	Brass mills No. 1 scrap	Refiners No. 2 scrap	Dealers	
			No. 2 scrap	Red brass turnings and borings
2020:				
September	291.05	262.19	220.00	128.86
October	291.93	261.84	222.73	130.00
November	306.26	277.53	230.00	139.47
December	339.98	314.75	258.18	165.45
Year	268.76	243.47	201.72	130.67
2021:				
January	349.74	320.61	266.50	167.00
February	370.89	338.87	270.00	175.00
March	392.04	351.52	296.50	185.50
April	406.52	365.52	289.00	186.50
May	444.95	405.23	341.50	239.00
June	421.77	381.68	345.50	230.50
July	417.36	374.12	330.00	227.00
August	410.36	368.41	337.50	238.00
September	409.62	368.38	319.00	229.00
January–September	402.58	363.82	310.61	208.61

Source: Fastmarkets-AMM.

TABLE 13
U.S. IMPORTS FOR CONSUMPTION OF COPPER (UNMANUFACTURED), BY CLASS¹

(Metric tons, copper content)

Country or locality	Ore and concentrates ²			Matte, ash, and precipitates ³			Blister and anodes ⁴			Refined ⁵		
	2021			2021			2021			2021		
	2020	September	January– September	2020	September	January– September	2020	September	January– September	2020	September	January– September
Bahrain	--	--	--	--	--	--	--	--	--	76	--	--
Belgium	--	--	--	354	--	197	--	--	--	--	--	--
Bolivia	--	--	--	--	--	--	--	--	--	1,030	--	763
Canada	2,170	1,210	9,460	459	55	376	(6)	--	(6)	149,000	12,700	111,000
Chile	--	--	--	--	--	--	--	--	--	410,000	64,700	471,000
China	--	--	--	(6)	--	--	--	--	--	426	13	500
Congo (Kinshasa)	--	--	--	--	--	--	--	--	--	148	3,750	18,700
Finland	--	--	--	--	--	--	275	44	247	--	--	35
Germany	--	--	--	--	--	155	(6)	(6)	(6)	1,910	191	1,500
Japan	--	--	1	176	--	48	(6)	--	(6)	2,060	84	1,030
Korea, Republic of	--	--	--	--	--	--	(6)	--	(6)	72	7	54
Mexico	--	--	--	(6)	(6)	8	(6)	--	--	95,200	5,480	57,100
Peru	--	--	--	--	--	--	--	--	--	14,500	1,260	18,500
Spain	--	--	--	49	--	--	--	--	--	654	--	(6)
Other	--	--	10	22	(6)	43	5	1	9	50	2,550	8,970
Total	2,170	1,210	9,470	1,060	55	827	281	45	257	676,000	90,700	689,000

-- Zero.

¹Data are rounded to no more than three significant digits; may not add to totals shown.

²Harmonized Tariff Schedule of the United States (HTS) code 2603.00.0010. Includes copper ore and concentrates only; excludes copper contained in ore and concentrates of other metals.

³HTS codes 2620.30.0010 and 7401.00.0000. Includes copper matte, ash, and precipitates only; excludes the copper content of mattes and ashes of other metals.

⁴HTS code 7402.00.0000.

⁵HTS codes 7403.11.0000, 7403.12.0000, 7403.13.0000, and 7403.19.0000.

⁶Less than ½ unit.

Source: U.S. Census Bureau.

TABLE 14
U.S. EXPORTS OF COPPER (UNMANUFACTURED), BY CLASS¹

(Metric tons, copper content)

Country or locality	Ore and concentrates ²			Matte, ash, and precipitates ³			Blister and anodes ⁴			Refined ⁵		
	2021			2021			2021			2021		
	2020	September	January– September	2020	September	January– September	2020	September	January– September	2020	September	January– September
Belgium	230	19	168	6,110	432	4,670	190	392	1,130	64	--	--
Bulgaria	4,350	--	--	(6)	--	--	--	--	--	--	--	--
Canada	36,100	3,520	29,500	13,100	984	13,800	1,690	1,120	14,600	12,600	1,230	23,500
China	49,300	8,770	51,400	62	12	391	148	21	151	233	--	1,550
Germany	--	--	784	288	20	371	128	22	131	22	--	20
Hong Kong	9	--	2	--	14	14	86	3	279	18	--	--
India	20	--	--	37	--	29	247	27	344	--	--	--
Italy	--	--	--	--	--	--	197	42	111	86	(6)	22
Japan	14,600	--	3,660	251	96	544	24	--	17	4	1	10
Korea, Republic of	8,140	--	2,360	1	--	81	1,390	20	1,090	1,160	3	28
Malaysia	--	--	--	3	6	47	218	--	140	--	1	5
Mexico	250,000	12,300	182,000	2,720	--	33	848	18	167	26,800	1,050	12,300
Philippines	6,250	--	--	--	--	(6)	10	--	34	--	--	--
Singapore	--	--	--	256	--	300	36	35	70	13	--	18
Slovakia	--	--	--	1,050	78	990	--	--	--	--	--	--
Spain	8,990	--	--	1,820	19	841	35	--	20	--	--	--
Sweden	--	--	--	--	--	--	135	--	72	--	1	1
Thailand	--	--	--	2	--	--	256	15	26	(6)	--	--
Other	4,630	19	2,500	172	29	199	565	131	740	164	14	371
Total	383,000	24,600	272,000	25,900	1,690	22,300	6,210	1,850	19,100	41,200	2,300	37,800

-- Zero.

¹Data are rounded to no more than three significant digits; may not add to totals shown.

²Schedule B of the United States code 2603.00.0010. Includes copper ore and concentrates only; excludes copper contained in ore and concentrates of other metals.

³Schedule B codes 2620.30.0000, 7401.00.0010, and 7401.00.0050. Includes copper matte, ash, and precipitates only; excludes the copper content of mattes and ashes of other metals.

⁴Schedule B code 7402.00.0000.

⁵Schedule B codes 7403.11.0000, 7403.12.0000, 7403.13.0000, and 7403.19.0000.

⁶Less than ½ unit.

Source: U.S. Census Bureau.

TABLE 15
U.S. IMPORTS FOR CONSUMPTION OF COPPER SCRAP¹

(Metric tons, gross weight)

Country or locality	Unalloyed ²			Alloyed ³		
	2021		January– September	2021		January– September
	2020	September		2020	September	
Antigua and Barbuda	--	--	--	151	--	100
Bahamas	--	--	--	681	56	474
Brazil	--	--	15	164	--	95
Canada	14,500	1,930	15,300	41,300	4,310	36,200
Cayman Islands	4	--	--	262	16	185
Colombia	60	20	154	808	96	494
Costa Rica	619	77	575	934	87	1,160
Dominican Republic	876	124	1,090	1,150	210	1,810
Ecuador	--	15	69	154	43	233
El Salvador	--	--	--	294	43	413
Germany	179	16	161	108	--	148
Guatemala	--	--	--	289	62	410
Honduras	54	2	67	844	66	679
Jamaica	--	--	7	258	30	98
Mexico	9,450	1,070	9,590	37,100	3,540	33,600
Nicaragua	114	--	17	--	12	65
Panama	714	125	744	335	76	379
Peru	495	--	19	251	21	260
Vietnam	121	--	99	22	--	52
Other	362	147	833	1,400	252	1,940
Total	27,600	3,520	28,700	86,500	8,920	78,800

-- Zero.

¹Data are rounded to no more than three significant digits; may not add to totals shown.

²Harmonized Tariff Schedule of the United States (HTS) codes 7404.00.3020 and 7404.00.6020.

³HTS codes 7404.00.3045, 7404.00.3055, 7404.00.3065, 7404.00.3090, 7404.00.6045, 7404.00.6055, 7404.00.6065, and 7404.00.6090.

Source: U.S. Census Bureau.

TABLE 16
U.S. EXPORTS OF COPPER SCRAP¹

(Metric tons, gross weight)

Country or locality	Unalloyed ²							Alloyed ³				
	2021							2021				
	2020	No. 1		No. 2		Other		2020	Segregated		Unsegregated	
		September	January– September	September	January– September	September	January– September		September	January– September	September	January– September
Austria	3,970	--	59	39	1,010	57	143	1,010	97	97	--	58
Belgium	20,900	644	5,430	493	5,000	285	2,920	11,100	58	679	549	5,270
Canada	51,800	--	--	--	--	5,790	48,100	32,200	--	--	5,770	39,100
China	81,200	4,150	32,700	4,930	32,300	7,870	68,000	35,400	1,480	13,800	1,720	20,000
Germany	22,400	839	9,860	117	1,800	515	3,450	16,000	408	1,270	1,030	9,540
Greece	13,000	257	5,450	21	2,390	337	3,820	1,450	--	96	262	1,570
Hong Kong	7,810	117	2,280	855	7,240	817	7,710	7,750	57	1,750	708	3,360
India	9,570	385	2,490	212	1,320	715	2,810	34,800	1,520	12,100	2,230	16,600
Japan	16,400	311	2,510	1,110	10,100	118	1,640	13,800	57	945	560	4,630
Korea, Republic of	45,700	1,270	14,300	1,080	10,400	1,050	12,400	18,500	249	3,890	1,140	8,700
Malaysia	54,400	498	5,880	275	8,930	3,170	37,800	122,000	1,610	16,300	3,940	53,800
Pakistan	697	2	65	31	161	20	58	14,500	--	59	3,300	16,400
Poland	5,000	--	634	191	1,330	803	5,680	6,570	--	59	--	2,110
Russia	7,310	--	113	--	100	20	838	830	--	--	--	530
Spain	4,070	48	281	40	186	228	1,640	7,610	41	1,470	365	3,810
Taiwan	17,000	335	4,550	169	1,710	522	4,040	16,400	227	2,110	340	2,890
Thailand	4,800	300	1,300	45	223	820	4,200	20,900	165	1,490	1,780	23,500
Vietnam	7,480	--	757	--	124	--	229	2,340	--	37	--	62
Other	22,900	753	7,300	89	1,680	636	5,870	16,600	407	3,080	1,370	10,400
Total	396,000	9,910	96,000	9,690	86,000	23,800	211,000	380,000	6,380	59,300	25,000	222,000

-- Zero.

¹Data are rounded to no more than three significant digits; may not add to totals shown.

²Schedule B of the United States codes 7404.00.0010 and 7404.00.0015 (no. 1), 7404.00.0025 (no. 2), and 7404.00.0030 (other).

³Schedule B codes for segregated alloyed copper scrap are 7404.00.0041, 7404.00.0046, 7404.00.0051, 7404.00.0056, 7404.00.0061, 7404.00.0066, and 7404.00.0075. Schedule B codes for unsegregated alloyed copper scrap are 7404.00.0085 and 7404.00.0095.

Source: U.S. Census Bureau.