

Mineral Industry Surveys

For information, contact:

Daniel M. Flanagan, Copper Commodity Specialist
National Minerals Information Center
U.S. Geological Survey
989 National Center
Reston, VA 20192
Telephone: (703) 648-7726, Fax: (703) 648-7757
Email: dflanagan@usgs.gov

Sheema Merchant (Data)
Telephone: (703) 659-9944
Fax: (703) 648-7975
Email: smerchant@usgs.gov

Internet: <https://www.usgs.gov/centers/national-minerals-information-center>

COPPER IN AUGUST 2021

In August 2021, domestic mine production of recoverable copper was 103,000 metric tons (t). The average daily mine production was 3,330 t, an increase of 6% from that in July and slightly lower than that in August 2020 (fig. 1). Year-to-date recoverable mine output was 788,000 t, a slight decrease compared with that through August 2020 (table 2).

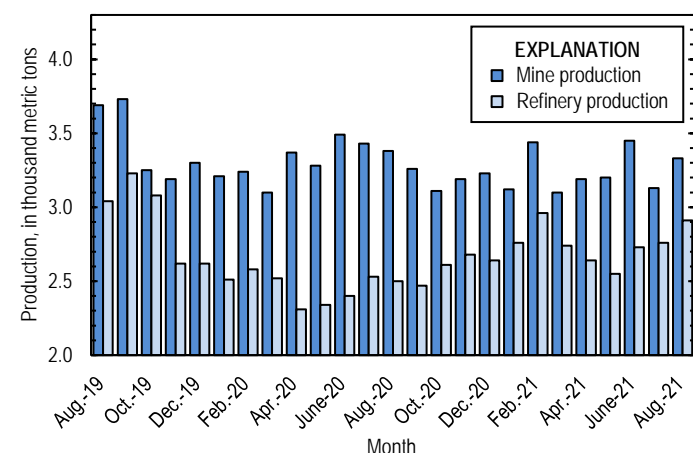


Figure 1. Average daily U.S. copper mine (recoverable) and refinery (primary and secondary) production from August 2019 through August 2021. Refinery production in November and December 2019 were withheld to avoid disclosing company proprietary data; the values shown reflect the daily average for cumulative production over this period rather than production in each month.

Owing to temporary closures of ASARCO LLC's smelter in Arizona and electrolytic refinery in Texas, smelter and electrolytic refinery production reported to the U.S. Geological Survey in August 2021 were withheld to avoid disclosing company proprietary data. Smelter and electrolytic refinery output in tables 3 and 4 are estimates based on information in quarterly company reports. The facilities shut down in October 2019 because of a worker strike, which reportedly ended in July 2020 (Wichner, 2021). As of August 2021, ASARCO had not announced when operations were expected to resume or a

reason for the continued closures. The three ASARCO mines in Arizona have continued to operate during the smelter and refinery stoppages.

Estimated U.S. smelter production was 35,000 t in August 2021. Year-to-date estimated smelter production was 265,000 t, an increase of 33% from that through August 2020 (table 3).

Total refinery production in the United States was 90,000 t in August 2021; data for electrolytic and electrowon output, as well as refined production from scrap, are reported in table 4. Average daily total refinery production was 2,900 t, 5% greater than that in July and 16% more than that in August 2020 (fig. 1). Year-to-date refinery output was 669,000 t, an increase of 11% relative to the same period in 2020 (table 4).

Prices

In August 2021, the average COMEX spot copper price was \$4.29 per pound, a slight decrease from \$4.35 per pound in July and an increase of 47% compared with \$2.92 per pound in August 2020 (fig. 2, table 11). The average U.S. dealers buying price of number 2 copper scrap in August 2021 was \$3.38 per pound, slightly greater than \$3.30 per pound in July and an increase of 59% from \$2.13 per pound in August 2020 (fig. 2, table 12).

Stocks

Refined copper stocks in the United States totaled 80,900 t at the end of August 2021, 4% higher than those in July and a decline of 47% from those in August 2020. COMEX stocks rose by 4,470 t (11%), and London Metal Exchange Ltd. stocks in U.S. warehouses decreased by 775 t (66%) compared with those at the end of July (fig. 3, table 10).

Industry News

Chile.—Workers at the Andina Mine, owned by Corporación Nacional del Cobre de Chile (Codelco), initiated a strike on August 12. In 2020, Andina was one of the leading global copper mines and produced 184,000 t of copper in concentrates (Corporación Nacional del Cobre de Chile, 2021, p. 28; Ignacio, 2021).

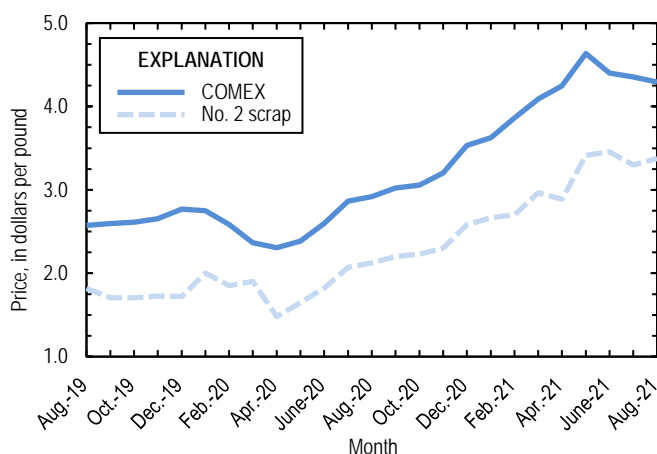


Figure 2. Monthly average COMEX copper price and no. 2 copper scrap dealers buying price from August 2019 through August 2021. As of January 2020, no. 2 prices were available only for the entire United States, whereas no. 2 prices were available only for individual domestic markets prior to January 2020. Prices shown prior to January 2020 are for New York dealers no. 2 scrap. Sources: Fastmarkets-AMM and S&P Global Platts Metals Week.

Extremely dry conditions in Chile were expected to have a negative impact on copper production. In August, a Chilean court ordered BHP Group to stop pumping water from an aquifer near the Cerro Colorado Mine. Antofagasta plc also announced that its yearend 2021 copper output was projected to be 20,000 t lower than originally anticipated and that up to 50,000 t of production would potentially be lost in 2022 because of low precipitation at the Los Pelambres Mine. In 2020, Los Pelambres was the eleventh-ranked global copper mine and produced 360,000 t of copper in concentrates, equivalent to nearly 2% of total global copper mine output (Antofagasta plc, 2021a, p. 66; 2021b, p. 1–2; de la Paz, 2021).

References Cited

- Antofagasta plc, 2021a, Developing mining for a better future—Annual report and financial statements 2020: London, United Kingdom, Antofagasta plc, 236 p. (Accessed January 19, 2022, at https://www.antofagasta.co.uk/media/4098/antofagasta_2020_annual_report.pdf.)
- Antofagasta plc, 2021b, Half yearly financial report for the six months ended 30 June 2021—Strong financial performance: London, United Kingdom, Antofagasta plc news release, August 19, 65 p. (Accessed January 19, 2022, at <https://www.antofagasta.co.uk/media/4176/antofagasta2021hyreport-vf2.pdf>.)

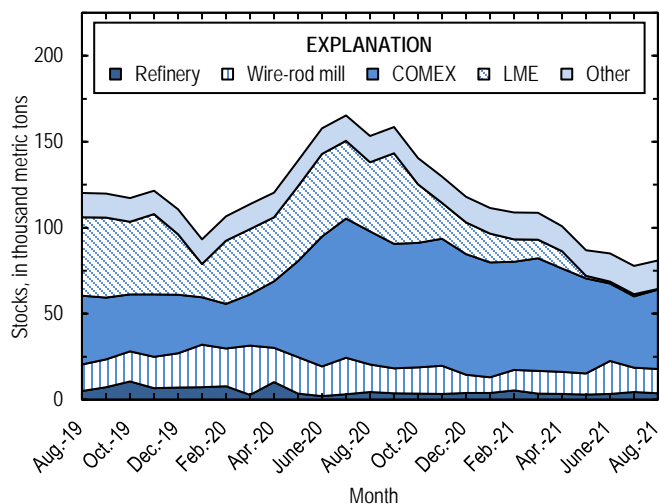


Figure 3. Domestic refined copper stocks at end of month, by type, from August 2019 through August 2021. Sources: Fastmarkets-AMM, London Metal Exchange Ltd., and U.S. Geological Survey.

- Corporación Nacional del Cobre de Chile, 2021, Transformación en tiempo de pandemia—Memoria anual 2020 [Transformation in a time of pandemic—Annual report 2020]: Santiago, Chile, Corporación Nacional del Cobre de Chile, 382 p. (Accessed January 19, 2022, at https://www.codelco.com/memoria2020/site/docs/20210422/20210422221511/memoria_anual_codelco_2020.pdf.)
- de la Paz, F.D.M., 2021, Chile court orders BHP to cease drawing water for Cerro Colorado mine—Reuters: S&P Capital IQ, August 20. (Accessed August 27, 2021, via <https://platform.spgi.spglobal.com/>.)
- Ignacio, R.J., 2021, Third union goes on strike at Codelco's Andina copper mine—Argus: S&P Capital IQ, August 18. (Accessed August 27, 2021, via <https://platform.spgi.spglobal.com/>.)
- Wichner, David, 2021, Tucson-based Asarco facing new charges over post-strike labor practices: Arizona Daily Star [Tucson, AZ], April 26. (Accessed May 14, 2021, at https://tucson.com/business/tucson-based-asarco-facing-new-charges-over-post-strike-labor-practices/article_ea8fb10c-a468-11eb-9063-3b0056bca30b.html.)

List services and web feed subscribers are the first to receive notification of USGS minerals information publications and data releases. For information on how to subscribe, go to <https://www.usgs.gov/centers/national-minerals-information-center/minerals-information-publication-list-services>.

TABLE 1
SALIENT STATISTICS OF THE COPPER INDUSTRY IN THE UNITED STATES¹

(Metric tons of copper content, unless otherwise specified)

	Source table ²	2020 ^p	2021			
			June	July	August	January– August
Production:						
Primary:						
Mine, recoverable	(2)	1,200,000	103,000	97,100	103,000	788,000
Smelter ^c	(3)	315,000	30,000	35,000	35,000	265,000
Refinery:						
Electrolytic, domestic and foreign ^c	(4)	315,000	30,000	35,000	35,000	265,000
Electrowon	(4)	559,000	46,700	47,200	51,300	371,000
Total	(4)	874,000	76,700	82,200	86,300	636,000
Secondary recoverable copper: ³						
Refineries	(5)	43,200	5,060	3,340	3,750	32,800
Ingot makers ⁴	(5)	57,900	4,820	4,820	4,820	38,600
Brass and wire-rod mills	(5)	670,000	53,800	53,900	54,300	442,000
Foundries, etc. ⁴	(5)	36,700	3,060	3,060	3,060	24,500
Consumption:						
Apparent, primary refined and copper from old scrap	(8)	1,660,000	156,000	154,000	200,000	1,350,000
Reported, refined copper	(7)	1,710,000	155,000	147,000	153,000	1,190,000
Purchased copper-base scrap (gross weight)	(9)	938,000	85,200	82,200	80,900	674,000
Stocks at end of period:						
Total refined	(10)	118,000	85,000	77,800	80,900	80,900
Blister and anode	(10)	9,380	10,300 ^r	12,300 ^r	22,600	22,600
Price, U.S. producers cathode (cents per pound) ⁵	(11)	286.745	448.082	443.779	437.543	426.471
Imports: ⁶						
Ore and concentrates	(13)	2,170	296	1,200	1,810	8,260
Refined	(13)	676,000	69,600	57,100	105,000	599,000
Exports: ⁶						
Ore and concentrates	(14)	383,000	29,000	23,600	21,600	247,000
Refined	(14)	41,200	6,880	5,270	1,830	35,500

^cEstimated. ^pPreliminary. ^rRevised.

¹Data are rounded to no more than three significant digits, except prices; may not add to totals shown.

²Numbers in parentheses refer to the tables where these data are located.

³Copper recovered from copper-base scrap only.

⁴Estimated based on the monthly average of 2018 annual data.

⁵Source: S&P Global Platts Metals Week.

⁶Source: U.S. Census Bureau.

TABLE 2
MINE PRODUCTION OF RECOVERABLE COPPER IN THE UNITED STATES¹

(Metric tons)

Period	Recoverable copper			Contained copper		
	Arizona	Others ²	Total	Electrowon	Concentrates ³	Total
2020: ^P						
January–August	592,000	216,000	808,000	370,000	455,000	826,000
August	78,900	25,900	105,000	49,100	57,900	107,000
September	72,600	25,300	97,900	45,700	54,300	100,000
October	71,000	25,500	96,500	47,600	50,800	98,500
November	69,900	25,800	95,700	47,100	50,600	97,700
December	75,000	25,100	100,000	48,400	53,800	102,000
January–December	880,000	318,000	1,200,000	559,000	665,000	1,220,000
2021:						
January	71,600	25,100	96,700	47,100	55,800	103,000
February	66,500	29,900	96,400	43,900	62,600	106,000
March	68,300	27,900	96,200	46,500	59,900	106,000
April	66,700	28,900	95,600	44,100	62,200	106,000
May	68,200	31,000	99,200	44,500	64,400	109,000
June	74,100	29,300	103,000	46,700	67,800	114,000
July	68,000	29,100	97,100	47,200	58,100	105,000
August	73,500	29,600	103,000	51,300	59,700	111,000
January–August	557,000	231,000	788,000	371,000	490,000	862,000

^PPreliminary.

¹Data are rounded to no more than three significant digits; may not add to totals shown.

²Includes production from Michigan, Missouri, Montana, Nevada, New Mexico, and Utah.

³Includes copper content of precipitates and other metal concentrates.

TABLE 3
COPPER PRODUCED AT SMELTERS IN
THE UNITED STATES^{1, 2}

(Metric tons, copper content)

Period	Anode production ^{e, 3}
2020: ^p	
January–August	200,000
August	25,000
September	25,000
October	30,000
November	30,000
December	30,000
January–December	315,000
2021:	
January	35,000
February	35,000
March	35,000
April	30,000
May	30,000
June	30,000
July	35,000
August	35,000
January–August	265,000

^eEstimated. ^pPreliminary.

¹Data are rounded to no more than three significant digits; may not add to totals shown.

²Includes blister and copper anode from primary or secondary sources.

³To avoid disclosing company proprietary data, monthly smelter production data are estimates based on information in quarterly public company reports and do not reflect actual production reported to the U.S. Geological Survey.

TABLE 4
U.S. PRODUCTION OF REFINED COPPER, BY SOURCE AND METHOD OF RECOVERY¹

(Metric tons)

Period	Primary materials			Scrap	Total refined
	Electrolytically refined ^{e, 2, 3}	Electrowon	Total		
2020: ^P					
January–August	200,000	370,000	570,000	29,900	600,000
August	25,000	49,100	74,100	3,380	77,500
September	25,000	45,700	70,700	3,490	74,200
October	30,000	47,600	77,600	3,220	80,900
November	30,000	47,100	77,100	3,290	80,400
December	30,000	48,400	78,400	3,300	81,700
January–December	315,000	559,000	874,000	43,200	918,000
2021:					
January	35,000	47,100	82,100	3,350	85,400
February	35,000	43,900	78,900	4,060	82,900
March	35,000	46,500	81,500	3,460	85,000
April	30,000	44,100	74,100	5,190	79,300
May	30,000	44,500	74,500	4,560	79,100
June	30,000	46,700	76,700	5,060	81,800
July	35,000	47,200	82,200	3,340	85,600
August	35,000	51,300	86,300	3,750	90,000
January–August	265,000	371,000	636,000	32,800	669,000

^eEstimated. ^PPreliminary.

¹Data are rounded to no more than three significant digits; may not add to totals shown.

²From domestic and foreign source materials.

³To avoid disclosing company proprietary data, monthly electrolytically refined production data are estimates based on information in quarterly public company reports and do not reflect actual production reported to the U.S. Geological Survey.

TABLE 5
COPPER RECOVERABLE IN UNALLOYED AND ALLOYED FORM FROM PURCHASED COPPER-BASE SCRAP
IN THE UNITED STATES¹

(Metric tons, copper content)

Period	Refineries ²		Ingot makers ³		Brass and wire-rod mills		Foundries, etc. ³		Total ⁴
	New scrap ^e	Old scrap	New scrap	Old scrap	New scrap	Old scrap	New scrap	Old scrap	
2020: ^p									
January–August	13,400	16,500	6,140	32,400	418,000	25,700	17,200	7,300	537,000
August	1,680	1,700	768	4,060	52,200	3,120	2,150	913	66,600
September	1,680	1,810	768	4,060	50,700	3,300	2,150	913	65,400
October	1,680	1,540	768	4,060	53,600	3,540	2,150	913	68,300
November	1,680	1,620	768	4,060	52,900	3,000	2,150	913	67,100
December	1,680	1,620	768	4,060	55,800	2,590	2,150	913	69,600
January–December	20,100	23,100	9,220	48,700	631,000	38,100	25,800	11,000	807,000
2021:									
January	1,680	1,670	768	4,060	53,700	4,110	2,150	913	69,000
February	1,680	2,380	768	4,060	51,700	3,500	2,150	913	67,100
March	1,680	1,780	768	4,060	53,100	3,870	2,150	913	68,300
April	1,680	3,510	768	4,060	51,900	3,870	2,150	913	68,900
May	1,680	2,890	768	4,060	50,800	3,710	2,150	913	66,900
June	1,680	3,390	768	4,060	50,200	3,560	2,150	913	66,700
July	1,680	1,660	768	4,060	50,500	3,420	2,150	913	65,100
August	1,680	2,080	768	4,060	50,700	3,640	2,150	913	66,000
January–August	13,400	19,400	6,140	32,400	413,000	29,700	17,200	7,300	538,000

^eEstimated. ^pPreliminary.

¹Data are rounded to no more than three significant digits; may not add to totals shown.

²Electrolytically refined and fire refined from scrap based on source of material at smelter or refinery level.

³Monthly data estimated based on the monthly average of 2018 annual data.

⁴Does not include an estimate, based on reported 2018 annual data, of 3,380 tons per month from new scrap and 2,710 tons per month from old scrap of copper recovered from scrap other than copper-base.

TABLE 6
U.S. PRODUCTION, SHIPMENTS, AND STOCKS OF BRASS AND WIRE-ROD SEMIFABRICATES¹

(Metric tons, gross weight)

Period	Production		Shipments		Stocks, end of period	
	Brass mills	Wire-rod mills	Brass mills	Wire-rod mills	Brass mills	Wire-rod mills
2020: ^p						
January–August	589,000	818,000	589,000	822,000	29,400	20,000
August	73,700	104,000	73,600	111,000	29,400	20,000
September	73,800	107,000	73,700	108,000	29,500	18,600
October	74,400	108,000	74,900	110,000	29,000	16,400
November	73,600	106,000	73,600	106,000	29,000	16,000
December	73,700	101,000	74,000	97,800	28,700	19,000
January–December	884,000	1,240,000	885,000	1,240,000	28,700	19,000
2021:						
January	73,900	104,000	74,000	106,000	28,300	16,800
February	74,100	96,600	73,800	97,600	28,600	15,800
March	74,700	125,000	74,500	122,000	28,800	17,800
April	75,000	110,000	75,300	113,000	28,500	15,200
May	73,200	117,000	73,300	114,000	28,400	18,300
June	74,200	110,000	74,000	109,000	28,500	19,100
July	74,600	112,000	74,800	115,000	28,400	17,000
August	76,000	118,000	75,800	114,000	28,500	21,200
January–August	596,000	891,000	596,000	889,000	28,500	21,200

^pPreliminary.

¹Data are rounded to no more than three significant digits; may not add to totals shown.

TABLE 7
U.S. CONSUMPTION OF REFINED COPPER¹

(Metric tons)

Period	Brass mills	Wire-rod mills	Other plants ²	Total
2020: ^p				
January–August	274,000	810,000	43,600	1,130,000
August	34,700	103,000	5,450	143,000
September	34,600	106,000	5,450	146,000
October	34,600	106,000	5,450	147,000
November	34,600	105,000	5,450	145,000
December	34,800	99,900	5,450	140,000
January–December	413,000	1,230,000	65,400	1,710,000
2021:				
January	34,700	93,400	5,450	134,000
February	34,900	96,100	5,450	137,000
March	35,300	119,000	5,450	159,000
April	34,300	108,000	5,450	148,000
May	34,100	119,000	5,450	159,000
June	33,600	116,000	5,450	155,000
July	34,400	108,000	5,450	147,000
August	34,500	113,000	5,450	153,000
January–August	276,000	871,000	43,600	1,190,000

^pPreliminary.

¹Data are rounded to no more than three significant digits; may not add to totals shown.

²Monthly consumption data by ingot makers, chemical plants, foundries, and miscellaneous manufacturers are estimated based on the monthly average of 2018 annual data.

TABLE 8
U.S. APPARENT CONSUMPTION OF COPPER¹

(Metric tons)

Period	Primary refined copper production	Copper in old scrap ²	Refined imports for consumption ³	Refined exports ³	Stock change during period	Apparent consumption
2020: ^p						
January–August	570,000	104,000	468,000	25,400	42,600	1,070,000
August	74,100	12,500	59,800	6,470	-12,100	152,000
September	70,700	12,800	39,900	4,570	5,410	113,000
October	77,600	12,800	57,300	2,930	-18,100	163,000
November	77,100	12,300	53,300	3,090	-10,800	150,000
December	78,400	11,900	57,400	5,150	-11,700	154,000
January–December	874,000	153,000	676,000	41,200	7,370	1,660,000
2021:						
January	82,100	13,500	42,400	4,350	-6,490	140,000
February	78,900	13,600	73,000	2,970	-2,600	165,000
March	81,500	13,300	99,700	3,360	-178	191,000
April	74,100	15,100	85,200	5,280	-7,710	177,000
May	74,500	14,300	66,600	5,580	-14,100	164,000
June	76,700	14,600	69,600	6,880	-1,900	156,000
July	82,200	12,800	57,100	5,270	-7,220	154,000
August	86,300	13,400	105,000	1,830	3,130	200,000
January–August	636,000	110,000	599,000	35,500	-37,000	1,350,000

^pPreliminary.

¹Data are rounded to no more than three significant digits; may not add to totals shown.

²Copper recovered from old scrap and converted to refined metal and alloys. Includes reported monthly production of copper from old scrap of copper-base, an estimate for annual reporters, and a monthly average of copper from non-copper-base materials based on 2018 annual data.

³Source: U.S. Census Bureau.

TABLE 9
U.S. CONSUMPTION OF PURCHASED COPPER-BASE SCRAP¹

(Metric tons, gross weight)

Period	Smelters and refineries		Ingot makers ²		Brass and wire-rod mills ³		Foundries, etc. ²		Total scrap used
	New scrap ^c	Old scrap	New scrap	Old scrap	New scrap	Old scrap	New scrap	Old scrap	
2020: ^p									
January–August	13,800	17,000	16,400	38,300	483,000	26,900	20,500	8,060	624,000
August	1,730	1,750	2,050	4,790	60,200	3,200	2,570	1,010	77,300
September	1,730	1,870	2,050	4,790	58,700	3,410	2,570	1,010	76,100
October	1,730	1,590	2,050	4,790	61,700	3,710	2,570	1,010	79,200
November	1,730	1,670	2,050	4,790	60,900	3,130	2,570	1,010	77,900
December	1,730	1,670	2,050	4,790	64,000	2,750	2,570	1,010	80,500
January–December	20,700	23,800	24,600	57,500	729,000	39,900	30,800	12,100	938,000
2021:									
January	1,730	1,720	2,050	4,790	68,000	4,190	2,570	1,010	86,000
February	1,730	2,460	2,050	4,790	63,600	3,580	2,570	1,010	81,800
March	1,730	1,830	2,050	4,790	68,000	3,970	2,570	1,010	85,900
April	1,730	3,620	2,050	4,790	65,300	4,010	2,570	1,010	85,100
May	1,730	2,980	2,050	4,790	67,900	3,820	2,570	1,010	86,900
June	1,730	3,490	2,050	4,790	65,900	3,680	2,570	1,010	85,200
July	1,730	1,710	2,050	4,790	64,800	3,520	2,570	1,010	82,200
August	1,730	2,140	2,050	4,790	62,900	3,750	2,570	1,010	80,900
January–August	13,800	20,000	16,400	38,300	526,000	30,500	20,500	8,060	674,000

^cEstimated. ^pPreliminary.

¹Data are rounded to no more than three significant digits; may not add to totals shown.

²Monthly data estimated based on the monthly average of 2018 annual data.

³Consumption at brass and wire-rod mills assumed equal to receipts.

TABLE 10
COPPER STOCKS IN THE UNITED STATES AT END OF PERIOD¹

(Metric tons)

Period	Blister and anode ²	Refined copper					LME ⁴	Total refined
		Refineries	Wire-rod mills	Brass mills	Other ³	Comex		
2020: ^P								
August	15,700	4,490	15,900	8,210	7,070	77,400	40,200	153,000
September	13,500	3,730	14,500	8,200	7,070	72,400	52,700	159,000
October	15,200	3,460	15,300	8,170	7,070	72,500	34,000	140,000
November	12,500	3,420	16,200	8,100	7,070	74,000	20,900	130,000
December	9,380	3,850	10,700	7,850	7,070	70,200	18,300	118,000
2021:								
January	17,400	3,810	9,190	7,970	7,070	66,800	16,700	111,000
February	23,800	5,310	11,900	8,610	7,070	62,900	13,100	109,000
March	29,200	3,470	13,200	8,570	7,070	65,500	10,900	109,000
April	27,100	3,360	12,800	7,550	7,070	60,200	9,950	101,000
May	27,100	2,930	12,400	7,850	7,070	55,100	1,630	86,900
June	10,300 ^r	3,260	19,300	9,190	7,070	45,000	1,180	85,000
July	12,300 ^r	4,540	14,000	9,430	7,070	41,600	1,180	77,800
August	22,600	3,620	14,200	9,570	7,070	46,100	400	80,900

^PPreliminary.

¹Data are rounded to no more than three significant digits; may not add to totals shown.

²Copper content.

³Monthly estimates based on 2018 annual data, comprising stocks at ingot makers, chemical plants, foundries, and miscellaneous manufacturers.

⁴London Metal Exchange Ltd., U.S. warehouses.

TABLE 11
AVERAGE PRICE OF COPPER IN THE UNITED STATES
AND ON THE LONDON METAL EXCHANGE

(Cents per pound)

Period	U.S. producers cathode ¹	Comex first position ²	LME cash price Grade A
2020:			
August	298.377	291.752	294.685
September	309.052	302.302	304.470
October	312.495	305.695	304.033
November	327.338	320.338	320.392
December	360.470	353.470	351.772
Year	286.745	279.948	279.797
2021:			
January	369.318	362.318	361.536
February	393.314	386.126	383.750
March	416.141	408.828	408.459
April	432.183	424.783	423.453
May	471.410	463.535	461.937
June	448.082	439.832	436.012
July	443.779	435.479	427.900
August	437.543	429.230	424.435
January–August	426.471	418.766	415.935

¹Sum of “Comex high grade first position” and “NY dealer premium cathode.”

²Listed as “Comex high grade first position.”

Source: S&P Global Platts Metals Week.

TABLE 12
AVERAGE BUYING PRICES FOR COPPER SCRAP IN THE UNITED STATES

(Cents per pound)

Period	Brass mills No. 1 scrap	Refiners No. 2 scrap	Dealers	
			No. 2 scrap	Red brass turnings and borings
2020:				
August	282.05	258.79	212.52	124.76
September	291.05	262.19	220.00	128.86
October	291.93	261.84	222.73	130.00
November	306.26	277.53	230.00	139.47
December	339.98	314.75	258.18	165.45
Year	268.76	243.47	201.72	130.67
2021:				
January	349.74	320.61	266.50	167.00
February	370.89	338.87	270.00	175.00
March	392.04	351.52	296.50	185.50
April	406.52	365.52	289.00	186.50
May	444.95	405.23	341.50	239.00
June	421.77	381.68	345.50	230.50
July	417.36	374.12	330.00	227.00
August	410.36	368.41	337.50	238.00
January–August	401.70	363.25	309.56	206.06

Source: Fastmarkets-AMM.

TABLE 13
U.S. IMPORTS FOR CONSUMPTION OF COPPER (UNMANUFACTURED), BY CLASS¹

(Metric tons, copper content)

Country or locality	Ore and concentrates ²			Matte, ash, and precipitates ³			Blister and anodes ⁴			Refined ⁵		
	2021			2021			2021			2021		
	2020	August	January– August	2020	August	January– August	2020	August	January– August	2020	August	January– August
Bahrain	--	--	--	--	--	--	--	--	--	76	--	--
Belgium	--	--	--	354	--	197	--	--	--	--	--	--
Bolivia	--	--	--	--	--	--	--	--	--	1,030	--	763
Canada	2,170	1,810	8,250	459	35	321	(6)	--	(6)	149,000	15,500	98,400
Chile	--	--	--	--	--	--	--	--	--	410,000	69,600	406,000
China	--	--	--	(6)	--	--	--	--	--	426	58	487
Congo (Kinshasa)	--	--	--	--	--	--	--	--	--	148	4,230	15,000
Finland	--	--	--	--	--	--	275	--	203	--	--	35
Germany	--	--	--	--	--	155	(6)	--	(6)	1,910	174	1,310
Japan	--	--	1	176	--	48	(6)	--	(6)	2,060	67	941
Korea, Republic of	--	--	--	--	--	--	(6)	--	(6)	72	6	47
Mexico	--	--	--	(6)	(6)	8	(6)	--	--	95,200	6,780	51,600
Peru	--	--	--	--	--	--	--	--	--	14,500	7,360	17,300
Spain	--	--	--	49	--	--	--	--	--	654	--	(6)
Other	--	(6)	10	22	(6)	43	5	(6)	8	50	1,430	6,420
Total	2,170	1,810	8,260	1,060	35	773	281	(6)	212	676,000	105,000	599,000

-- Zero.

¹Data are rounded to no more than three significant digits; may not add to totals shown.

²Harmonized Tariff Schedule of the United States (HTS) code 2603.00.0010. Includes copper ore and concentrates only; excludes copper contained in ore and concentrates of other metals.

³HTS codes 2620.30.0010 and 7401.00.0000. Includes copper matte, ash, and precipitates only; excludes the copper content of mattes and ashes of other metals.

⁴HTS code 7402.00.0000.

⁵HTS codes 7403.11.0000, 7403.12.0000, 7403.13.0000, and 7403.19.0000.

⁶Less than ½ unit.

Source: U.S. Census Bureau.

TABLE 14
U.S. EXPORTS OF COPPER (UNMANUFACTURED), BY CLASS¹

(Metric tons, copper content)

Country or locality	Ore and concentrates ²			Matte, ash, and precipitates ³			Blister and anodes ⁴			Refined ⁵		
	2021			2021			2021			2021		
	2020	August	January– August	2020	August	January– August	2020	August	January– August	2020	August	January– August
Belgium	230	7	149	6,110	552	4,230	190	14	739	64	--	--
Bulgaria	4,350	--	--	(6)	--	--	--	--	--	--	--	--
Canada	36,100	3,660	25,900	13,100	2,200	12,800	1,690	2,670	13,400	12,600	928	22,300
China	49,300	6,190	42,700	62	133	378	148	53	130	233	8	1,550
Germany	--	--	784	288	20	351	128	--	109	22	--	20
Hong Kong	9	--	2	--	--	--	86	210	276	18	--	--
India	20	--	--	37	--	29	247	140	317	--	--	--
Italy	--	--	--	--	--	--	197	--	69	86	--	21
Japan	14,600	--	3,660	251	20	449	24	--	17	4	(6)	9
Korea, Republic of	8,140	--	2,360	1	--	81	1,390	56	1,070	1,160	--	25
Malaysia	--	--	--	3	--	41	218	21	140	--	--	3
Mexico	250,000	11,100	169,000	2,720	--	33	848	57	149	26,800	887	11,200
Philippines	6,250	--	--	--	--	(6)	10	--	34	--	--	--
Singapore	--	--	--	256	29	300	36	--	34	13	3	18
Slovakia	--	--	--	1,050	96	912	--	--	--	--	--	--
Spain	8,990	--	--	1,820	78	822	35	--	20	--	--	--
Sweden	--	--	--	--	--	--	135	--	72	--	--	--
Thailand	--	--	--	2	--	--	256	--	11	(6)	--	--
Other	4,630	681	2,480	172	18	170	565	55	609	164	4	357
Total	383,000	21,600	247,000	25,900	3,150	20,600	6,210	3,280	17,200	41,200	1,830	35,500

-- Zero.

¹Data are rounded to no more than three significant digits; may not add to totals shown.

²Schedule B of the United States code 2603.00.0010. Includes copper ore and concentrates only; excludes copper contained in ore and concentrates of other metals.

³Schedule B codes 2620.30.0000, 7401.00.0010, and 7401.00.0050. Includes copper matte, ash, and precipitates only; excludes the copper content of mattes and ashes of other metals.

⁴Schedule B code 7402.00.0000.

⁵Schedule B codes 7403.11.0000, 7403.12.0000, 7403.13.0000, and 7403.19.0000.

⁶Less than ½ unit.

Source: U.S. Census Bureau.

TABLE 15
U.S. IMPORTS FOR CONSUMPTION OF COPPER SCRAP¹

(Metric tons, gross weight)

Country or locality	Unalloyed ²			Alloyed ³		
	2021		January– August	2021		January– August
	2020	August		2020	August	
Antigua and Barbuda	--	--	--	151	10	100
Bahamas	--	--	--	681	30	418
Brazil	--	15	15	164	5	95
Canada	14,500	1,520	13,300	41,300	3,850	31,800
Cayman Islands	4	--	--	262	38	169
Colombia	60	57	134	808	34	397
Costa Rica	619	88	498	934	162	1,070
Dominican Republic	876	179	962	1,150	270	1,600
Ecuador	--	7	54	154	21	190
El Salvador	--	--	--	294	8	370
Germany	179	16	145	108	17	148
Guatemala	--	--	--	289	13	348
Honduras	54	22	65	844	56	612
Jamaica	--	--	7	258	14	68
Mexico	9,450	1,190	8,520	37,100	3,880	30,100
Nicaragua	114	--	17	--	15	53
Panama	714	37	619	335	27	303
Peru	495	19	19	251	19	240
Vietnam	121	13	99	22	12	52
Other	362	95	686	1,400	523	1,690
Total	27,600	3,250	25,200	86,500	9,000	69,900

-- Zero.

¹Data are rounded to no more than three significant digits; may not add to totals shown.

²Harmonized Tariff Schedule of the United States (HTS) codes 7404.00.3020 and 7404.00.6020.

³HTS codes 7404.00.3045, 7404.00.3055, 7404.00.3065, 7404.00.3090, 7404.00.6045, 7404.00.6055, 7404.00.6065, and 7404.00.6090.

Source: U.S. Census Bureau.

TABLE 16
U.S. EXPORTS OF COPPER SCRAP¹

(Metric tons, gross weight)

Country or locality	Unalloyed ²							Alloyed ³				
	2021							2021				
	2020	No. 1		No. 2		Other		2020	Segregated		Unsegregated	
		August	January– August	August	January– August	August	January– August		August	January– August	August	January– August
Austria	3,970	--	59	57	973	--	86	1,010	--	--	--	58
Belgium	20,900	611	4,790	438	4,510	199	2,640	11,100	18	621	309	4,720
Canada	51,800	--	--	--	--	5,650	42,300	32,200	--	--	4,810	33,400
China	81,200	5,550	28,500	4,550	27,400	8,930	60,100	35,400	1,430	12,300	2,320	18,300
Germany	22,400	669	9,020	239	1,680	325	2,940	16,000	121	866	1,190	8,520
Greece	13,000	461	5,190	79	2,370	517	3,480	1,450	--	96	159	1,310
Hong Kong	7,810	183	2,160	858	6,380	939	6,890	7,750	107	1,690	297	2,650
India	9,570	235	2,100	317	1,110	600	2,090	34,800	1,870	10,600	2,150	14,400
Japan	16,400	471	2,200	1,960	8,990	193	1,520	13,800	54	888	730	4,070
Korea, Republic of	45,700	1,410	13,100	1,290	9,320	1,080	11,400	18,500	360	3,640	1,250	7,560
Malaysia	54,400	765	5,380	459	8,660	3,450	34,700	122,000	1,510	14,700	4,310	49,900
Pakistan	697	40	63	65	130	37	37	14,500	--	59	2,910	13,100
Poland	5,000	195	634	100	1,140	929	4,870	6,570	--	59	96	2,110
Russia	7,310	--	113	--	100	--	819	830	--	--	--	530
Spain	4,070	--	233	20	146	386	1,410	7,610	141	1,430	565	3,440
Taiwan	17,000	415	4,210	128	1,540	569	3,520	16,400	213	1,880	337	2,550
Thailand	4,800	144	996	--	179	406	3,380	20,900	212	1,330	2,280	21,700
Vietnam	7,480	139	757	--	124	33	229	2,340	--	37	--	62
Other	22,900	918	6,550	96	1,590	445	5,240	16,600	175	2,670	2,270	9,000
Total	396,000	12,200	86,100	10,700	76,300	24,700	188,000	380,000	6,210	52,900	26,000	197,000

-- Zero.

¹Data are rounded to no more than three significant digits; may not add to totals shown.

²Schedule B of the United States codes 7404.00.0010 and 7404.00.0015 (no. 1), 7404.00.0025 (no. 2), and 7404.00.0030 (other).

³Schedule B codes for segregated alloyed copper scrap are 7404.00.0041, 7404.00.0046, 7404.00.0051, 7404.00.0056, 7404.00.0061, 7404.00.0066, and 7404.00.0075. Schedule B codes for unsegregated alloyed copper scrap are 7404.00.0085 and 7404.00.0095.

Source: U.S. Census Bureau.