

Mineral Industry Surveys

For information, contact:

Daniel M. Flanagan, Copper Commodity Specialist
National Minerals Information Center
U.S. Geological Survey
989 National Center
Reston, VA 20192
Telephone: (703) 648-7726, Fax: (703) 648-7757
Email: dflanagan@usgs.gov

Samir Hakim (Data)
Telephone: (703) 648-7955
Fax: (703) 648-7975
Email: shakim@usgs.gov

Internet: <http://minerals.usgs.gov/minerals/>

COPPER IN JUNE 2017

In June 2017, domestic mine production of recoverable copper was 109,000 metric tons (t). The average daily mine production was 3,650 t, 6% greater than that in May and a decrease of 6% compared with that in June 2016. Year-to-date recoverable mine production through June 2017 was 650,000 t, a decline of 10% relative to the same period in 2016 (fig. 1; table 2). During the first half of 2017, most mines in the United States produced less copper in concentrates than in the first half of 2016 owing to lower ore grades, reduced mining rates, and complications from poor weather conditions (ASARCO LLC, 2015; Capstone Mining Corp., 2017; Freeport-McMoRan Inc., 2017b; Grupo México, S.A.B. de C.V., 2017, p. 82; KGHM Polska Miedź S.A., 2017, p. 74). These declines were partially offset by a 24% increase in first half output at the Bingham Canyon Mine relative to the first half of 2016; Rio Tinto Group (United Kingdom) attributed the higher production to increased mining rates (Rio Tinto Group, 2017, p. 4).

Smelter production in June 2017 was 37,100 t. The average daily smelter production was 1,240 t, 90% greater than that in May and 18% lower than the daily average in June 2016. Year-to-date smelter production through June 2017 was 247,000 t, a

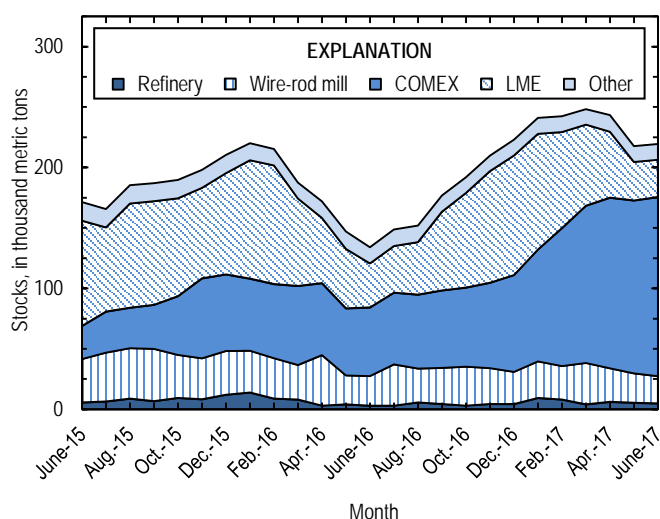


Figure 2. Monthly domestic refined copper stocks, by type, from June 2015 through June 2017. Sources: American Metal Market, London Metal Exchange Ltd., and U.S. Geological Survey.

decrease of 11% compared with the same period in the prior year (table 3). This reduction in smelter output was partially a consequence of scheduled maintenance shutdowns at two of the three domestic smelters in the first half of 2017 (Freeport-McMoran Inc., 2017a; Rio Tinto Group, 2017, p. 4).

Total U.S. refinery production in June 2017 was 83,000 t; electrolytic and electrowon production data are available in table 4. Average daily total refinery production was 2,770 t, a slight increase compared with that in May and 15% less than that in June 2016. Year-to-date refinery production through June 2017 was 559,000 t, a decrease of 10% relative to the same period in 2016 (fig. 1; tables 2, 4).

Stocks

Refined copper stocks in the United States totaled 219,000 t at the end of June 2017, a slight increase from those in May and

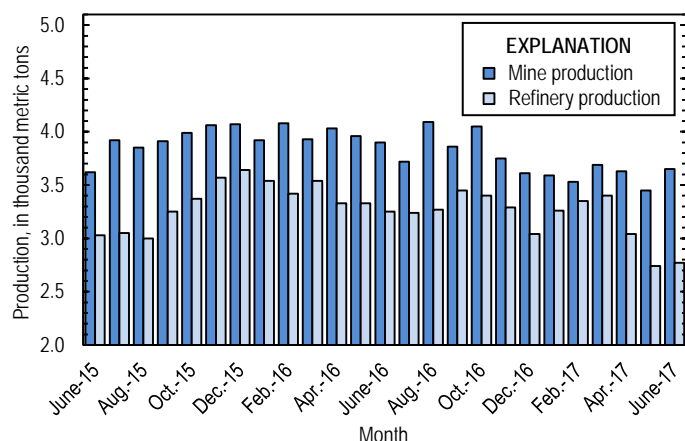


Figure 1. Average daily U.S. copper mine (recoverable) and refinery production from June 2015 through June 2017. Source: U.S. Geological Survey.

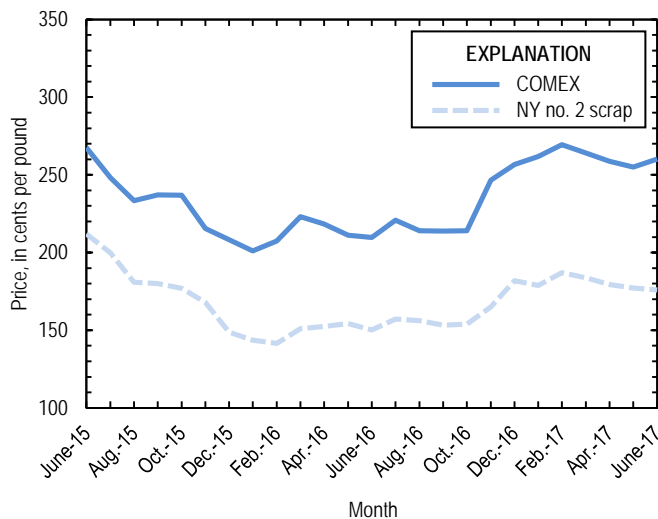


Figure 3. Monthly average COMEX copper price and New York no. 2 copper scrap price from June 2015 through June 2017. Sources: American Metal Market, Platts Metals Week.

64% greater than those in June 2016. COMEX stocks rose by 3%, stocks at wire-rod mills fell by 7%, and London Metal Exchange Ltd. stocks in U.S. warehouses decreased by 3% compared with those at the end of May (fig. 2, table 10).

Prices

The average June 2017 COMEX spot copper price was \$2.60 per pound, slightly more than \$2.55 per pound in May and 24% greater than \$2.10 per pound in June 2016 (fig. 3, table 11). Increased manufacturing output in China and the United States compared with that in May, an overall decrease in global refined copper stocks, and a weakening U.S. dollar contributed to the price increase (Barker, 2017; Tilley and Saraf, 2017, p. 1). The average price of New York dealers' number 2 scrap in June 2017 was \$1.76 per pound, down slightly from the average price in May and 17% higher than the average price in June 2016 (table 12).

References Cited

- ASARCO LLC, 2015, Press release August 28, 2015: Tucson, AZ, ASARCO LLC press release, August 28. (Accessed July 6, 2017, at <http://www.asarco.com/wp-content/uploads/PressRelease-2015-08-28.pdf>.)
- Barker, Dalton, 2017, Copper could top \$6,000/T in July, analyst says: American Metal Market, July 5. (Accessed July 7, 2017, via <http://www.amm.com/>.)
- Capstone Mining Corp., 2017, Capstone Mining first quarter 2017 financial results: Vancouver, British Columbia, Canada, Capstone Mining Corp. press release, April 25. (Accessed August 25, 2017, at <http://capstonemining.com/news/news-details/2017/Capstone-Mining-First-Quarter-2017-Financial-Results/default.aspx>.)
- Freeport-McMoRan Inc., 2017a, Form 10-K—2016: U.S. Securities and Exchange Commission, February 24, 193 p. (Accessed June 20, 2017, via <https://www.sec.gov/edgar/searchedgar/companysearch.html>.)
- Freeport-McMoRan Inc., 2017b, Freeport-McMoRan reports second-quarter and six-month 2017 results: Phoenix, AZ, Freeport-McMoRan Inc. news release, July 25. (Accessed August 25, 2017, at <http://investors.fcx.com/investor-center/news-releases/news-release-details/2017/Freeport-McMoRan-Reports-Second-Quarter-and-Six-Month-2017-Results/default.aspx>.)
- Grupo México, S.A.B. de C.V., 2017, Informe anual 2016: Mexico City, Mexico, Grupo México, S.A.B. de C.V., 264 p. (Accessed July 6, 2017, via <http://quicktake.morningstar.com/stocknet/secdocuments.aspx?symbol=gmbxf>.)
- KGHM Polska Miedź S.A., 2017, Consolidated half-year report PSr 2017: Lubin, Poland, KGHM Polska Miedź S.A., 92 p. (Accessed August 25, 2017, at http://kgbm.com/sites/kgbm2014/files/document-attachments/report_psr_2017.pdf.)
- Rio Tinto Group, 2017, Rio Tinto releases second quarter production results: London, United Kingdom, Rio Tinto Group press release, July 18, 28 p. (Accessed August 25, 2017, at http://www.riotinto.com/documents/170718_Rio%20Tinto%20releases%20second%20quarter%20production%20results.pdf.)
- Tilley, Julia, and Saraf, Sanjay, 2017, Commodity briefing service—Copper: S&P Global Market Intelligence, July, 13 p. (Accessed August 25, 2017, via <http://www.snl.com/>.)

List services and web feed subscribers are the first to receive notification of USGS minerals information publications and data releases. For information on how to subscribe, go to <http://minerals.usgs.gov/minerals/>.

TABLE 1
SALIENT STATISTICS OF THE COPPER INDUSTRY IN THE UNITED STATES¹

(Metric tons, unless otherwise specified)

	Source table ²	2016 ^p	2017			
			April	May	June	January– June
Production:						
Primary:						
Mine, recoverable	(2)	1,430,000	109,000	107,000	109,000	650,000
Smelter, total	(3)	563,000	40,700	20,100	37,100	247,000
Refinery:						
Electrolytic, domestic and foreign	(4)	561,000	42,300	32,800	33,100	261,000
Electrowon	(4)	615,000	45,600	48,600	46,600	278,000
Total	(4)	1,180,000	87,800	81,400	79,800	539,000
Secondary recoverable copper:						
Refineries	(5)	46,300	3,230	3,380	3,280	20,500
Ingot makers ³	(5)	73,100	6,090	6,090	6,090	36,500
Brass and wire-rod mills	(5)	621,000	54,400	55,200	54,400	325,000
Foundries, etc. ³	(5)	47,200	3,940	3,940	3,940	23,600
Consumption:						
Apparent	(8)	1,890,000 ^r	145,000 ^r	174,000 ^r	165,000	956,000
Refined (reported)	(7)	1,810,000 ^r	152,000 ^r	154,000 ^r	155,000	926,000
Purchased copper-base scrap	(9)	917,000	81,900	82,800	82,000	490,000
Stocks at end of period:						
Total refined	(10)	223,000 ^r	243,000 ^r	218,000 ^r	219,000	219,000
Blister, etc.	(10)	14,400	26,100	11,000	11,000	11,000
Prices, U.S. producers cathode (cents per pound) ⁴	(11)	224.873	263.626	259.902	265.143	266.368
Imports: ⁵						
Ore and concentrate ⁶	(13)	67	9	2	3	10,700
Refined	(13)	708,000	51,900	63,500	66,100	398,000
Exports: ⁵						
Ore and concentrate ⁶	(14)	331,000	26,400	23,400	21,100	111,000
Refined	(14)	134,000	12,200	9,230	6,140	58,800

^pPreliminary. ^rRevised.

¹Data are rounded to no more than three significant digits, except prices; may not add to totals shown.

²Numbers in parentheses refer to the tables where these data are located.

³Monthly data estimated based on the monthly average of 2015 annual data.

⁴Source: Platts Metals Week.

⁵Source: U.S. Census Bureau.

⁶Copper content.

TABLE 2
MINE PRODUCTION OF RECOVERABLE COPPER IN THE UNITED STATES¹

(Metric tons)

Period	Recoverable copper			Contained copper		
	Arizona	Others ²	Total	Electrowon	Concentrates ³	Total
2016: ^p						
January–May	410,000	195,000	605,000	256,000	364,000	620,000
June	79,800	37,200	117,000	50,700	69,000	120,000
July	80,200	35,100	115,000	54,000	63,700	118,000
August	86,400	40,300	127,000	52,700	76,900	130,000
September	79,400	36,400	116,000	51,400	67,000	118,000
October	81,800	43,700	125,000	53,300	74,900	128,000
November	74,200	38,200	112,000	48,700	66,100	115,000
December	76,600	35,300	112,000	47,900	66,600	115,000
January–December	969,000	461,000	1,430,000	615,000	848,000	1,460,000
2017:						
January	71,000	40,200	111,000	46,800	66,900	114,000
February	64,200	34,500	98,700	41,600	59,400	101,000
March	77,500	36,800	114,000	49,000	67,900	117,000
April	72,500	36,500	109,000	45,600	66,000	112,000
May	75,100	31,900	107,000	48,600	60,900	109,000
June	71,900	37,500	109,000	46,600	65,100	112,000
January–June	432,000	218,000	650,000	278,000	386,000	664,000

^pPreliminary.

¹Data are rounded to no more than three significant digits; may not add to totals shown.

²Includes production from Michigan, Missouri, Montana, Nevada, New Mexico, and Utah.

³Includes copper content of precipitates and other metal concentrates.

TABLE 3
COPPER PRODUCED AT SMELTERS IN
THE UNITED STATES^{1,2}

(Metric tons, copper content)

Period	Anode production
2016: ^p	
January–May	232,000
June	45,400
July	33,100
August	47,700
September	54,000
October	51,900
November	43,300
December	55,000
January–December	563,000
2017:	
January	48,900
February	47,800
March	52,200
April	40,700
May	20,100
June	37,100
January–June	247,000

^pPreliminary.

¹Includes blister and copper anode from primary or secondary sources.

²Data are rounded to no more than three significant digits; may not add to totals shown.

TABLE 4
PRODUCTION OF REFINED COPPER, BY SOURCE AND METHOD OF RECOVERY¹

(Metric tons)

Period	Primary materials			Scrap	Total refined
	Electrolytically refined ²	Electrowon	Total		
2016: ^P					
January–May	243,000	256,000	499,000	22,700	522,000
June	43,600	50,700	94,200	3,260	97,500
July	43,200	54,000	97,200	3,280	100,000
August	45,200	52,700	97,900	3,300	101,000
September	48,200	51,400	99,500	3,810	103,000
October	48,800	53,300	102,000	3,410	106,000
November	46,600	48,700	95,300	3,220	98,600
December	42,900	47,900	90,800	3,330	94,100
January–December	561,000	615,000	1,180,000	46,300	1,220,000
2017:					
January	51,100	46,800	97,900	3,240	101,000
February	48,200	41,600	89,800	4,090	93,900
March	53,200	49,000	102,000	3,240	105,000
April	42,300	45,600	87,800	3,230	91,000
May	32,800	48,600	81,400	3,380	84,800
June	33,100	46,600	79,800	3,280	83,000
January–June	261,000	278,000	539,000	20,500	559,000

^PPreliminary.

¹Data are rounded to no more than three significant digits; may not add to totals shown.

²From domestic and foreign source materials.

TABLE 5
COPPER RECOVERABLE IN UNALLOYED AND ALLOYED FORM FROM PURCHASED COPPER-BASE SCRAP¹

(Metric tons, copper content)

Period	Refineries ²		Ingot makers ³		Brass and wire-rod mills		Foundries, etc. ³		Total ⁴
	New scrap	Old scrap	New scrap	Old scrap	New scrap	Old scrap	New scrap	Old scrap	
2016: ^p									
January–May	8,180	14,500	6,440	24,000	239,000	15,200	15,200	4,490	327,000
June	1,680	1,580	1,290	4,800	49,600	3,000	3,040	898	65,800
July	1,680	1,600	1,290	4,800	48,200	2,600	3,040	898	64,100
August	1,680	1,620	1,290	4,800	48,900	2,790	3,040	898	65,000
September	1,680	2,130	1,290	4,800	49,700	2,730	3,040	898	66,300
October	1,680	1,740	1,290	4,800	51,800	3,020	3,040	898	68,300
November	1,680	1,540	1,290	4,800	49,900	3,060	3,040	898	66,200
December	1,680	1,650	1,290	4,800	49,100	2,860	3,040	898	65,300
January–December	19,900	26,400	15,400	57,600	586,000	35,200	36,500	10,800	788,000
2017:									
January	1,680	1,560	1,290	4,800	49,500	3,360	3,040	898	66,100
February	1,680	2,420	1,290	4,800	50,100	2,940	3,040	898	67,100
March	1,680	1,560	1,290	4,800	52,000	3,110	3,040	898	68,400
April	1,680	1,550	1,290	4,800	51,300	3,110	3,040	898	67,600
May	1,680	1,710	1,290	4,800	52,000	3,140	3,040	898	68,600
June	1,680	1,600	1,290	4,800	51,300	3,070	3,040	898	67,700
January–June	10,100	10,400	7,720	28,800	306,000	18,700	18,200	5,390	405,000

^pPreliminary.

¹Data are rounded to no more than three significant digits; may not add to totals shown.

²Electrolytically refined and fire refined from scrap based on source of material at smelter or refinery level.

³Monthly data estimated based on the monthly average of the 2015 annual data.

⁴Does not include an estimate, based on reported 2015 annual data, of 3,050 tons per month from new scrap and 2,510 tons per month from old scrap of copper recovered from scrap other than copper-base.

TABLE 6
PRODUCTION, SHIPMENTS, AND STOCKS OF BRASS AND WIRE-ROD SEMIFABRICATES¹

(Metric tons, gross weight)

Period	Production		Shipments		Stocks, end of period	
	Brass mills	Wire-rod mills	Brass mills	Wire-rod mills	Brass mills	Wire-rod mills
2016: ^p						
January–May	368,000	563,000 ^r	369,000	555,000 ^r	27,800	28,200 ^r
June	72,300	115,000 ^r	71,200	113,000 ^r	28,900	29,900 ^r
July	72,800	98,500 ^r	72,700	99,900 ^r	29,100	28,500 ^r
August	74,400	118,000 ^r	73,800	121,000 ^r	29,600	25,800 ^r
September	72,500	107,000 ^r	73,500	112,000 ^r	28,700	21,000 ^r
October	74,800	115,000 ^r	75,100	111,000 ^r	28,500	24,900 ^r
November	72,700	112,000 ^r	72,800	109,000 ^r	28,300	28,200 ^r
December	72,300	94,300 ^r	72,100	97,700 ^r	28,500	24,800 ^r
January–December	880,000	1,320,000 ^r	880,000	1,320,000 ^r	28,500	24,800 ^r
2017:						
January	73,500	114,000 ^r	72,900	117,000 ^r	29,100	22,200 ^r
February	72,800	105,000 ^r	73,100	98,000 ^r	28,900	29,000 ^r
March	74,200	117,000 ^r	74,400	120,000 ^r	28,600	25,300 ^r
April	72,200	112,000 ^r	72,800	104,000 ^r	28,000	33,000 ^r
May	74,700	112,000 ^r	74,500	117,000 ^r	28,300	28,500 ^r
June	73,300	115,000	73,400	117,000	28,100	26,400
January–June	441,000	675,000	441,000	673,000	28,100	26,400

^pPreliminary. ^rRevised.

¹Data are rounded to no more than three significant digits; may not add to totals shown.

TABLE 7
CONSUMPTION OF REFINED COPPER¹

(Metric tons)

Period	Brass mills	Wire-rod mills	Other plants ²	Total
2016: ^P				
January–May	175,000	557,000 ^r	29,100	761,000 ^r
June	35,500	115,000 ^r	5,820	156,000 ^r
July	35,500	98,300 ^r	5,820	140,000 ^r
August	35,600	119,000 ^r	5,820	160,000 ^r
September	35,400	107,000 ^r	5,820	148,000 ^r
October	35,400	116,000 ^r	5,820	157,000 ^r
November	34,400	116,000 ^r	5,820	156,000 ^r
December	33,800	93,200 ^r	5,820	133,000
January–December	421,000	1,320,000 ^r	69,800	1,810,000 ^r
2017:				
January	34,600	113,000 ^r	5,820	154,000 ^r
February	34,800	114,000 ^r	5,820	154,000 ^r
March	35,300	116,000 ^r	5,820	157,000 ^r
April	34,200	112,000 ^r	5,820	152,000 ^r
May	35,300	113,000 ^r	5,820	154,000 ^r
June	34,700	114,000	5,820	155,000
January–June	209,000	682,000	34,900	926,000

^PPreliminary. ^rRevised.

¹Data are rounded to no more than three significant digits; may not add to totals shown.

²Monthly consumption data by ingot makers, chemical plants, foundries, and miscellaneous manufacturers are estimated based on the monthly average of 2015 annual data.

TABLE 8
U.S. APPARENT CONSUMPTION OF COPPER¹

(Metric tons)

Period	Refined copper production	Copper in old scrap ²	Refined general imports ³	Refined exports ³	Stock change during period	Apparent consumption
2016: ^P						
January–May	499,000	70,800	247,000	79,700	(63,400) ^r	801,000 ^r
June	94,200	12,800	63,400	5,600	(13,000) ^r	178,000 ^r
July	97,200	12,400	68,200	6,510	14,700 ^r	157,000 ^r
August	97,900	12,600	62,200	6,420	3,210 ^r	163,000 ^r
September	99,500	13,100	66,800	6,630	24,900 ^r	148,000 ^r
October	102,000	13,000	67,600	7,750	15,100 ^r	160,000 ^r
November	95,300	12,800	65,900	13,100	17,900 ^r	143,000 ^r
December	90,800	12,700	59,400	8,040	13,200 ^r	142,000
January–December	1,180,000	160,000	701,000	134,000	12,600 ^r	1,890,000 ^r
2017:						
January	97,900	13,100	72,400	12,300	18,000 ^r	153,000 ^r
February	89,800	13,600	53,500	9,100	1,420 ^r	146,000 ^r
March	102,000	12,900	73,800	9,760	5,800 ^r	173,000 ^r
April	87,800	12,900	51,400	12,200	(5,100) ^r	145,000 ^r
May	81,400	13,100	63,200	9,230	(25,200) ^r	174,000 ^r
June	79,800	12,900	79,500	6,140	1,240	165,000
January–June	539,000	78,400	394,000	58,800	(3,840)	956,000

^PPreliminary. ^rRevised.

¹Data are rounded to no more than three significant digits; may not add to totals shown.

²Includes reported monthly production of copper from old scrap of copper-base, an estimate for annual reporters, and a monthly average of copper from non-copper-base materials based on 2015 annual data.

³Source: U.S. Census Bureau.

TABLE 9
CONSUMPTION OF PURCHASED COPPER-BASE SCRAP¹

(Metric tons, gross weight)

Period	Smelters and refineries		Ingot makers ²		Brass and wire-rod mills ³		Foundries, etc. ²		Total scrap used
	New scrap	Old scrap	New scrap	Old scrap	New scrap	Old scrap	New scrap	Old scrap	
2016: ^p									
January–May	8,430	11,300	14,500	27,300	278,000	15,600	18,300	4,960	379,000
June	1,730	1,590	2,890	5,460	57,500	3,090	3,660	992	76,900
July	1,730	1,590	2,890	5,460	56,200	2,670	3,660	992	75,100
August	1,730	1,590	2,890	5,460	56,900	2,870	3,660	992	76,000
September	1,730	1,590	2,890	5,460	57,600	2,800	3,660	992	76,700
October	1,730	1,590	2,890	5,460	59,800	3,120	3,660	992	79,200
November	1,730	1,590	2,890	5,460	58,000	3,250	3,660	992	77,500
December	1,730	1,590	2,890	5,460	57,100	2,990	3,660	992	76,400
January–December	20,500	22,400	34,700	65,500	681,000	36,400	43,900	11,900	917,000
2017:									
January	1,820	4,630	2,890	5,460	57,500	3,490	3,660	992	80,400
February	1,820	4,630	2,890	5,460	58,000	3,040	3,660	992	80,500
March	1,820	4,630	2,890	5,460	60,100	3,240	3,660	992	82,700
April	1,820	4,630	2,890	5,460	59,300	3,190	3,660	992	81,900
May	1,820	4,630	2,890	5,460	60,100	3,250	3,660	992	82,800
June	1,820	4,630	2,890	5,460	59,300	3,180	3,660	992	82,000
January–May	10,900	27,800	17,300	32,700	354,000	19,400	21,900	5,950	490,000

^pPreliminary.

¹Data are rounded to no more than three significant digits; may not add to totals shown.

²Monthly data estimated based on the monthly average of 2015 annual data.

³Consumption at brass and wire-rod mills assumed equal to receipts.

TABLE 10
COPPER STOCKS AT END OF PERIOD¹

(Metric tons)

Period	Crude copper ²	Refined copper					Total refined
		Refineries ³	Wire-rod mills ³	Brass mills ³	Other ⁴	Comex	
2016: ^p							
June	18,700	2,820	24,600 ^r	7,680	5,730	56,600	134,000 ^r
July	13,500	3,040	34,100 ^r	7,940	5,730	59,300	149,000 ^r
August	12,500	5,660	28,000 ^r	7,930	5,730	61,000	152,000 ^r
September	12,600	4,230	30,000 ^r	7,650	5,730	64,000	177,000 ^r
October	14,700	3,230	32,000 ^r	7,270	5,730	65,300	192,000 ^r
November	13,800	4,290	29,700 ^r	7,070	5,730	70,600	210,000 ^r
December	14,400	4,190	26,700 ^r	7,380	5,730	80,100	223,000 ^r
2017:							
January	11,700	9,250	30,300 ^r	7,430	5,730	92,600	241,000 ^r
February	13,200	8,010	27,700 ^r	7,330	5,730	114,000	242,000 ^r
March	13,500	3,860	34,400 ^r	7,050	5,730	130,000	248,000 ^r
April	26,100	5,980	27,900 ^r	8,030	5,730	141,000	243,000 ^r
May	11,000	5,280	24,400 ^r	7,410	5,730	143,000	218,000 ^r
June	11,000	4,670	22,700	7,370	5,730	148,000	219,000

^pPreliminary. ^rRevised.

¹Data are rounded to no more than three significant digits; may not add to totals shown.

²Copper content of blister and anode.

³Stocks of refined copper as reported; no estimates are made for nonrespondents.

⁴Monthly estimates based on reported and 2015 annual data, comprising stocks at ingot makers, chemical plants, foundries, and miscellaneous manufacturers.

⁵London Metal Exchange Ltd., U.S. warehouses.

TABLE 11
AVERAGE PRICE OF COPPER IN THE UNITED STATES
AND ON THE LONDON METAL EXCHANGE

(Cents per pound)

Period	U.S. producers cathode ¹	Comex first position ²	LME cash price Grade A
2016:			
June	215.520	209.770	210.025
July	226.296	220.733	220.235
August	219.284	214.096	215.811
September	218.752	213.752	213.496
October	218.885	214.010	214.629
November	251.388	246.638	246.878
December	261.183	256.683	256.997
January–December	224.873	219.727	220.571
2017:			
January	266.363	261.863	260.225
February	274.051	269.426	269.484
March	269.122	264.122	264.040
April	263.626	258.626	258.428
May	259.902	254.902	253.608
June	265.143	260.193	258.506
January–June	266.368	261.522	260.715

¹Sum of "Comex high grade first position" and "NY dealer premium cathode."

²Listed as "Comex high grade first position."

Source: Platts Metals Week.

TABLE 12
AVERAGE BUYING PRICES FOR COPPER SCRAP

(Cents per pound)

Month	Brass mills No. 1 scrap	Refiners No. 2 scrap	Dealers (New York)	
			No. 2 scrap	Red brass turnings and borings
2016:				
June	210.30	191.68	150.27	130.14
July	221.00	201.70	157.15	134.10
August	213.54	192.26	156.20	133.35
September	213.43	191.88	153.21	131.57
October	212.71	190.05	153.88	131.95
November	241.32	218.05	165.00	137.50
December	248.38	224.48	181.98	146.00
January–December	218.01	197.52	155.05	132.17
2017:				
January	254.78	228.38	178.80	144.65
February	261.50	234.00	186.97	148.00
March	256.70	228.57	183.67	146.30
April	251.10	225.95	179.50	145.00
May	249.41	225.32	177.23	144.36
June	255.59	232.27	175.95	144.00
January–June	254.85	229.08	180.35	145.39

Source: American Metal Market.

TABLE 13
U.S. IMPORTS FOR CONSUMPTION OF COPPER (UNMANUFACTURED), BY CLASS¹

(Metric tons, copper content)

Country or territory	Ore and concentrate			Matte, ash, and precipitates			Blister and anodes			Refined		
	2017			2017			2017			2017		
	January–			January–			January–			January–		
	2016	June	June	2016	June	June	2016	June	June	2016	June	June
Belgium	--	--	--	27	--	25	--	--	--	--	--	(2)
Canada	33	--	2	355	(2)	110	2	--	--	193,000	15,800	93,400
Chile	--	--	--	--	--	--	--	--	--	354,000	41,600	252,000
China	--	--	--	--	--	--	(2)	--	--	76	8	24
Congo (Kinshasa)	--	--	--	--	--	--	--	--	--	21,100	783	5,070
Finland	--	--	--	--	--	--	175	34	166	110	--	2
Germany	--	--	--	--	--	--	(2)	--	--	1,830	267	1,070
India	3	--	--	--	--	--	--	--	--	1,210	--	224
Japan	--	--	--	109	1	1	3	(2)	1	4,090	355	2,260
Mexico	3	3	10,600	41	1	11	--	--	--	102,000	7,070	38,900
Netherlands	--	--	--	69	--	58	(2)	--	2	(2)	--	3
Peru	--	--	--	--	--	--	--	--	--	24,800	--	2,450
Other	27	--	9	205	--	282	93	18	48	4,100	292	2,770
Total	67	3	10,700	806	1	486	274	52	216	708,000	66,100	398,000

-- Zero.

¹Data are rounded to no more than three significant digits; may not add to totals shown.

²Less than ½ unit.

Source: U.S. Census Bureau.

TABLE 14
U.S. EXPORTS OF COPPER (UNMANUFACTURED), BY CLASS¹

(Metric tons, copper content)

Country or territory	Ore and concentrate			Matte, ash, and precipitates			Blister and anodes			Refined		
	2017			2017			2017			2017		
	January–			January–			January–			January–		
	2016	June	June	2016	June	June	2016	June	June	2016	June	June
Belgium	(2)	--	--	5,700	503	3,370	679	31	214	--	--	(2)
Canada	25,800	2,320	14,600	12,300	1,940	7,350	2,050	195	1,820	32,400	1,610	11,800
China	57,100	4,520	25,700	52	--	4	485	55	99	32,600	2	10,000
Germany	--	--	--	204	57	453	517	20	82	21	2	3
Hong Kong	--	--	--	36	--	--	1,070	99	580	--	--	--
Italy	--	--	--	--	15	15	377	--	110	240	--	3
Japan	20,400	--	19	180	114	164	453	2	41	157	1	8
Korea, Republic of	138	--	64	352	53	147	1,420	184	1,030	85	572	2,440
Mexico	226,000	14,300	70,400	--	--	--	99	5	78	67,700	3,940	33,900
Singapore	--	--	--	--	--	--	42	6	16	13	(2)	4
Spain	--	--	--	40	116	116	266	--	81	4	--	1
Switzerland	--	--	--	--	--	--	24	1	16	5	--	1
Taiwan	--	--	--	359	--	54	60	--	60	62	4	8
Other	853	7	64	883	57	76	1,970	151	854	518	9	603
Total	331,000	21,100	111,000	20,100	2,850	11,700	9,510	749	5,080	134,000	6,140	58,800

-- Zero.

¹Data are rounded to no more than three significant digits; may not add to totals shown.

²Less than ½ unit.

Source: U.S. Census Bureau.

TABLE 15
U.S. COPPER SCRAP IMPORTS¹

(Metric tons, gross weight)

Country or territory	Unalloyed			Alloyed		
	2017			2017		
	2016	June	January– June	2016	June	January– June
Canada	13,300	1,360	10,300	52,200	7,670	40,700
Chile	41	--	18	211	37	208
Colombia	259	--	245	1,180	158	701
Costa Rica	344	58	329	1,030	74	520
Guatemala	--	--	29	326	76	194
Honduras	102	--	19	357	26	163
Mexico	12,900	875	4,740	34,400	3,060	17,800
Nicaragua	--	--	--	264	40	108
Other	2,170	364	1,640	6,180	426	4,050
Total	29,100	2,660	17,400	96,100	11,600	64,400

-- Zero.

¹Data are rounded to no more than three significant digits; may not add to totals shown.

Source: U.S. Census Bureau.

TABLE 16
U.S. COPPER SCRAP EXPORTS¹

(Metric tons, gross weight)

Country or territory	Unalloyed							Alloyed				
	2017							2017				
	No. 1		No. 2		Other			Segregated		Unsegregated		
	January–		January–		January–			January–		January–		
	2016	June	June	June	June	June	June	2016	June	June	June	June
Belgium	9,030	307	1,310	154	934	142	1,010	8,390	20	639	556	2,660
Canada	23,400	--	--	--	--	3,890	23,300	51,200	--	--	3,660	28,700
China	284,000	11,100	60,500	7,250	42,200	9,840	62,600	376,000	8,520	55,800	18,500	122,000
Germany	24,900	922	7,150	385	1,590	91	590	8,130	135	476	525	3,600
Hong Kong	6,550	269	1,130	71	733	197	2,730	17,100	993	3,540	2,510	12,000
India	1,670	163	654	71	252	162	1,100	23,000	1,880	9,820	187	1,420
Japan	6,460	189	666	460	2,770	437	2,110	8,730	43	361	567	5,130
Korea, Republic of	17,000	724	4,340	--	413	315	2,350	10,300	666	3,220	191	1,850
Mexico	1,660	317	1,430	--	--	4	99	950	1	22	125	246
Netherlands	12,100	56	1,370	20	117	291	2,020	1,170	--	--	--	38
Spain	182	--	139	15	118	--	20	7,770	57	385	405	2,380
Taiwan	8,290	267	2,050	125	620	--	164	1,740	82	392	102	481
Thailand	121	--	79	--	--	(2)	4	1,050	60	139	--	--
Other	16,100	247	5,380	54	787	192	566	16,900	134	1,600	1,290	7,300
Total	411,000	14,500	86,200	8,610	50,600	15,600	98,700	532,000	12,600	76,400	28,600	188,000

-- Zero.

¹Data are rounded to no more than three significant digits; may not add to totals shown.

²Less than ½ unit.

Source: U.S. Census Bureau.