

Mineral Industry Surveys

For information, contact:

Daniel M. Flanagan, Copper Commodity Specialist
National Minerals Information Center
U.S. Geological Survey
989 National Center
Reston, VA 20192
Telephone: (703) 648-7726, Fax: (703) 648-7757
Email: dflanagan@usgs.gov

Samir Hakim (Data)
Telephone: (703) 648-7955
Fax: (703) 648-7975
Email: shakim@usgs.gov

Internet: <http://minerals.usgs.gov/minerals/>

COPPER IN MAY 2017

In May 2017, domestic mine production of recoverable copper was 107,000 metric tons (t). The average daily mine production was 3,450 t, 5% less than that in April and a decrease of 13% compared with May 2016. Year-to-date recoverable mine production through May 2017 was 540,000 t, a decline of 11% relative to the same period in 2016.

Total U.S. refinery production in May 2017 was 84,800 t; electrolytic and electrowon production data are available in table 4. Average daily total refinery production was 2,740 t, a decline of 10% compared with that in April and 18% less than that in May 2016. Scheduled maintenance shutdowns at two of the three U.S. smelters affected refined copper output during the month. Year-to-date refinery production through May 2017 was 476,000 t, a decrease of 9% relative to the same period in 2016 (fig. 1; tables 2, 4).

Smelter production in May 2017 was 20,100 t. The average daily smelter production was 650 t, roughly half of that in April and 61% lower than the daily average in May 2016. Year-to-date smelter production through May 2017 was 210,000 t, a decrease of 10% compared with the same period during the prior year (table 3, 4).

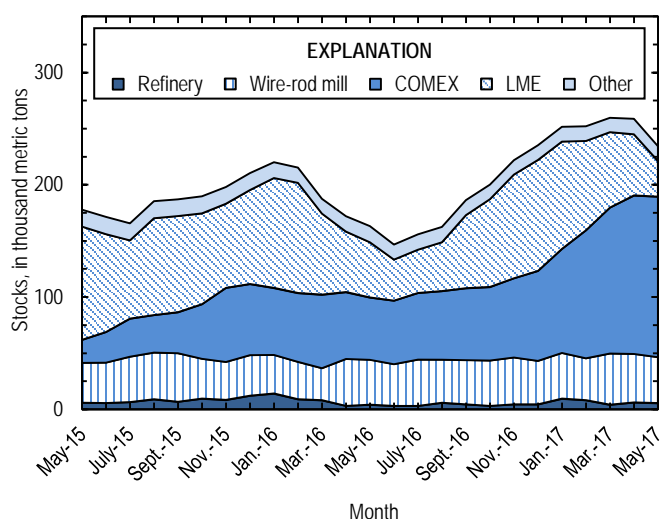


Figure 2. Monthly domestic refined copper stocks, by type, from May 2015 through May 2017. Sources: American Metal Market, London Metal Exchange Ltd., and U.S. Geological Survey.

Stocks

Refined copper stocks in the United States fell for the second consecutive month and totaled 235,000 t at the end of May 2017, a 9% decline from those in April and 44% greater than those in May 2016. COMEX stocks rose by 2%, stocks at wire-rod mills fell by 5%, and London Metal Exchange Ltd. stocks in U.S. warehouses decreased by 42% compared with those at the end of April (fig. 2, table 10).

Prices

The average May 2017 COMEX spot copper price was \$2.55 per pound, slightly less than \$2.59 per pound in April and 21% greater than \$2.11 per pound in May 2016 (fig. 3, table 11). Weaker manufacturing and construction activity in China compared to recent months, an increase in foreign refined copper stocks, and continued low demand in the domestic construction industry contributed to the price decline (Barker,

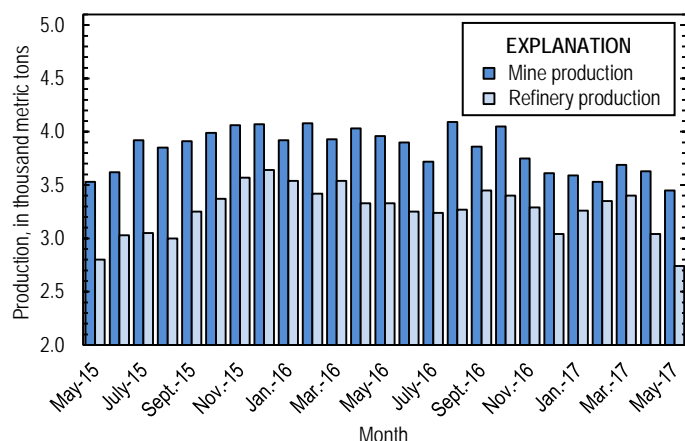


Figure 1. Average daily U.S. copper mine (recoverable) and refinery production from May 2015 through May 2017. Source: U.S. Geological Survey.

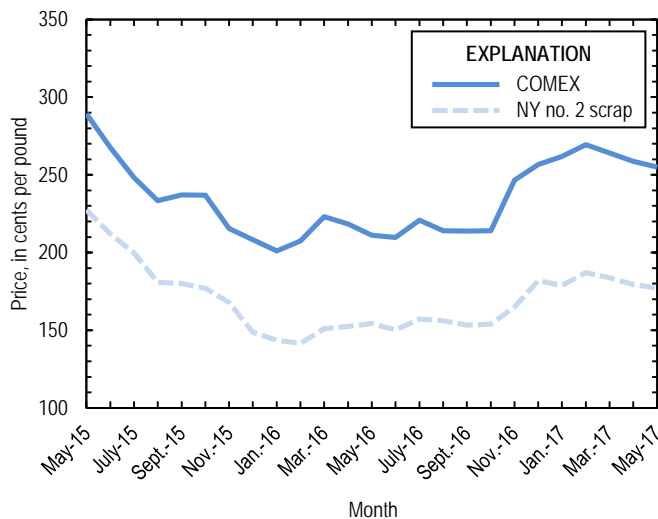


Figure 3. Monthly average COMEX copper price and New York no. 2 copper scrap price from May 2015 through May 2017. Sources: American Metal Market, Platts Metals Week.

2017; Tilley and Saraf, 2017, p. 3–4). Although work stoppages took place at several leading global copper mines earlier in the year, the disruptions primarily reduced stocks of copper concentrate and blister and did not strongly affect the refined copper market (CRU International Ltd., 2017, p. 4). The average price of New York dealers' number 2 scrap in May 2017 was \$1.77 per pound, down slightly from the average price in April and 15% higher than the average price in May 2016 (table 12).

Industry News

Unionized workers at PT Freeport Indonesia's Grasberg Mine began a strike on May 1 in response to workforce layoffs resulting from a permitting dispute with the Government of Indonesia. Freeport's license to ship concentrates from the country had expired on January 11, leading the company to halt mining operations at Grasberg from February 10 through April 20 (Hotter, 2017; Teo, 2017). A new temporary license granted in April would permit exports through October 10, 2017; negotiations with the Government of Indonesia to reach a long-term export agreement were ongoing (Mir, 2017). In late May,

Freeport terminated about 4,000 workers after the union announced that the strike, which negatively affected mining and milling rates at the mine, would extend into a second month (Mughal, 2017).

Northern Dynasty Minerals Ltd. (Canada) reached an agreement with the U.S. Environmental Protection Agency (EPA) to initiate permitting under the Clean Water Act for the Pebble project in Alaska (Northern Dynasty Minerals Ltd., 2017). The project had been delayed since 2014 while the EPA reviewed its environmental impact. Measured and indicated copper resources at the site totaled nearly 26 million metric tons (Northern Dynasty Minerals Ltd., 2014).

References Cited

- Barker, Dalton, 2017, US copper extras heading for long summer: American Metal Market, May 17. (Accessed May 18, 2017, via <http://www.amm.com/>.)
- CRU International Ltd., 2017, CRU copper monitor: London, United Kingdom, CRU International Ltd., May 25, 22 p. (Accessed June 5, 2017, via <http://www.crugroup.com/>.)
- Hotter, Andrea, 2017, Freeport halts Grasberg concentrate output: American Metal Market, February 14. (Accessed February 15, 2017, via <http://www.amm.com/>.)
- Mir, Fawad, 2017, Freeport receives temporary permit to resume exports from Grasberg: S&P Global Market Intelligence, May 4. (Accessed May 7, 2017, via <http://www.snl.com/>.)
- Mughal, Sarah, 2017, Freeport deems resigned 4,000 Grasberg workers as strike continues: S&P Global Market Intelligence, May 25. (Accessed June 5, 2017, via <http://www.snl.com/>.)
- Northern Dynasty Minerals Ltd., 2014, Pebble: Vancouver, British Columbia, Canada, Northern Dynasty Minerals Ltd. (Accessed August 7, 2017, at <http://www.northerndynastyminerals.com/ndm/Pebble.asp>.)
- Northern Dynasty Minerals Ltd., 2017, Northern Dynasty announces Pebble project advisory committee: Vancouver, British Columbia, Canada, Northern Dynasty Minerals Ltd. news release, May 18. (Accessed August 7, 2017, at <http://www.northerndynastyminerals.com/ndm/NewsReleases.asp?ReportID=790357>.)
- Teo, Vivian, 2017, Freeport seeks 'workable' Indonesia solution: American Metal Market, April 31. (Accessed May 3, 2017, via <http://www.amm.com/>.)
- Tilley, Julia, and Saraf, Sanjay, 2017, Commodity briefing service—Copper: S&P Global Market Intelligence, June. (Accessed August 7, 2017, via <http://www.snl.com/>.)

List services and web feed subscribers are the first to receive notification of USGS minerals information publications and data releases. For information on how to subscribe, go to <http://minerals.usgs.gov/minerals/>.

TABLE 1
SALIENT STATISTICS OF THE COPPER INDUSTRY IN THE UNITED STATES¹

(Metric tons, unless otherwise specified)

	Source table ²	2016 ^p	2017			
			March	April	May	January– May
Production:						
Primary:						
Mine, recoverable	(2)	1,430,000	114,000	109,000	107,000	540,000
Smelter, total	(3)	563,000	52,200	40,700	20,100	210,000
Refinery:						
Electrolytic, domestic and foreign	(4)	561,000	53,200	42,300	32,800	227,000
Electrowon	(4)	615,000	49,000	45,600	48,600	232,000
Total	(4)	1,180,000	102,000	87,800	81,400	459,000
Secondary recoverable copper:						
Refineries	(5)	46,300	3,240	3,230	3,380	17,200
Ingot makers ³	(5)	73,100	6,090	6,090	6,090	30,500
Brass and wire-rod mills	(5)	621,000	55,100	54,400 ^r	55,200	270,000
Foundries, etc. ³	(5)	47,200	3,940	3,940	3,940	19,700
Consumption:						
Apparent	(8)	1,880,000	172,000	141,000	172,000	787,000
Refined (reported)	(7)	1,780,000	149,000	146,000 ^r	149,000	742,000
Purchased copper-base scrap	(9)	917,000	82,700	81,900 ^r	82,800	408,000
Stocks at end of period:						
Total refined	(10)	235,000	260,000	259,000 ^r	235,000	235,000
Blister, etc.	(10)	14,400 ^r	13,500	26,100	11,000	11,000
Prices, U.S. producers cathode (cents per pound) ⁴	(11)	224.873	269.122	263.626	259.902	266.613
Imports: ⁵						
Ore and concentrate ⁶	(13)	67	9,050	9	2	10,700
Refined	(13)	708,000	84,800	51,900	63,500	332,000
Exports: ⁵						
Ore and concentrate ⁶	(14)	331,000	17,200	26,400	23,400	89,800
Refined	(14)	134,000	9,760	12,200	9,230	52,600

^pPreliminary. ^rRevised.

¹Data are rounded to no more than three significant digits, except prices; may not add to totals shown.

²Numbers in parentheses refer to the tables where these data are located.

³Monthly data estimated based on 2015 monthly average.

⁴Source: Platts Metals Week.

⁵Source: U.S. Census Bureau.

⁶Copper content.

TABLE 2
MINE PRODUCTION OF RECOVERABLE COPPER IN THE UNITED STATES¹

(Metric tons)

Period	Recoverable copper			Contained copper		
	Arizona	Others ²	Total	Electrowon	Concentrates ³	Total
2016: ^p						
January–April	327,000	156,000	482,000	204,000	290,000	494,000
May	83,500	39,400	123,000	51,700	74,000	126,000
June	79,800	37,200	117,000	50,700	69,000	120,000
July	80,200	35,100	115,000	54,000	63,700	118,000
August	86,400	40,300	127,000	52,700	76,900	130,000
September	79,400	36,400	116,000	51,400	67,000	118,000
October	81,800	43,700	125,000	53,300	74,900	128,000
November	74,200	38,200	112,000	48,700	66,100	115,000
December	76,600	35,300	112,000	47,900	66,600	115,000
January–December	969,000	461,000	1,430,000	615,000	848,000	1,460,000
2017:						
January	71,000	40,200	111,000	46,800	66,900	114,000
February	64,200	34,500	98,700	41,600	59,400	101,000
March	77,500	36,800	114,000	49,000	67,900	117,000
April	72,500	36,500 ^r	109,000	45,600	66,000 ^r	112,000
May	75,100	31,900	107,000	48,600	60,900	109,000
January–May	360,000	180,000	540,000	232,000	321,000	553,000

^pPreliminary. ^rRevised.

¹Data are rounded to no more than three significant digits; may not add to totals shown.

²Includes production from Michigan, Missouri, Montana, Nevada, New Mexico, and Utah.

³Includes copper content of precipitates and other metal concentrates.

TABLE 3
COPPER PRODUCED AT SMELTERS IN
THE UNITED STATES^{1,2}

(Metric tons, copper content)

Period	Anode production
2016: ^p	
January–April	180,000
May	51,900
June	45,400
July	33,100
August	47,700
September	54,000
October	51,900
November	43,300
December	55,000
January–December	563,000
2017:	
January	48,900
February	47,800
March	52,200
April	40,700
May	20,100
January–May	210,000

^pPreliminary.

¹Includes blister and copper anode from primary or secondary sources.

²Data are rounded to no more than three significant digits; may not add to totals shown.

TABLE 4
PRODUCTION OF REFINED COPPER, BY SOURCE AND METHOD OF RECOVERY¹

(Metric tons)

Period	Primary materials			Scrap	Total refined
	Electrolytically refined ²	Electrowon	Total		
2016: ^P					
January–April	195,000	204,000	399,000	19,500	419,000
May	48,200	51,700	99,900	3,180	103,000
June	43,600	50,700	94,200	3,260	97,500
July	43,200	54,000	97,200	3,280	100,000
August	45,200	52,700	97,900	3,300	101,000
September	48,200	51,400	99,500	3,810	103,000
October	48,800	53,300	102,000	3,410	105,000
November	46,600	48,700	95,300	3,220	98,500
December	42,900	47,900	90,800	3,330	94,100
January–December	561,000	615,000	1,180,000	46,300	1,220,000
2017:					
January	51,100	46,800	97,900	3,240	101,000
February	48,200	41,600	89,800	4,090	93,900
March	53,200	49,000	102,000	3,240	105,000
April	42,300	45,600	87,800	3,230	91,000
May	32,800	48,600	81,400	3,380	84,800
January–May	227,000	232,000	459,000	17,200	476,000

^PPreliminary.

¹Data are rounded to no more than three significant digits; may not add to totals shown.

²From domestic and foreign source materials.

TABLE 5
COPPER RECOVERABLE IN UNALLOYED AND ALLOYED FORM FROM PURCHASED COPPER-BASE SCRAP¹

(Metric tons, copper content)

Period	Refineries ²		Ingot makers ³		Brass and wire-rod mills		Foundries, etc. ³		Total ⁴
	New scrap	Old scrap	New scrap	Old scrap	New scrap	Old scrap	New scrap	Old scrap	
2016: ^P									
January–April	6,570	13,000	5,150	19,200	188,000	12,600	12,200	3,590	261,000
May	1,610	1,570	1,290	4,800	50,400	2,610	3,040	898	66,200
June	1,680	1,580	1,290	4,800	49,600	3,000	3,040	898	65,800
July	1,680	1,600	1,290	4,800	48,200	2,600	3,040	898	64,100
August	1,680	1,620	1,290	4,800	48,900	2,790	3,040	898	65,000
September	1,680	2,130	1,290	4,800	49,700	2,730	3,040	898	66,300
October	1,680	1,740	1,290	4,800	51,800	3,020	3,040	898	68,300
November	1,680	1,540	1,290	4,800	49,900	3,060	3,040	898	66,200
December	1,680	1,650	1,290	4,800	49,100	2,860	3,040	898	65,300
January–December	19,900	26,400	15,400	57,600	586,000	35,200	36,500	10,800	788,000
2017:									
January	1,680	1,560	1,290	4,800	49,500	3,360	3,040	898	66,100
February	1,680	2,420	1,290	4,800	50,100	2,940	3,040	898	67,100
March	1,680	1,560	1,290	4,800	52,000	3,110	3,040	898	68,400
April	1,680	1,550	1,290	4,800	51,300 ^r	3,110	3,040	898	67,600 ^r
May	1,680	1,710	1,290	4,800	52,000	3,140	3,040	898	68,600
January–May	8,390	8,800	6,440	24,000	255,000	15,700	15,200	4,490	338,000

^PPreliminary. ^rRevised.

¹Data are rounded to no more than three significant digits; may not add to totals shown.

²Electrolytically refined and fire-refined from scrap based on source of material at smelter or refinery level.

³Monthly data and 2016 cumulative data estimated based on 2015 annual data.

⁴Does not include an estimate, based on reported 2015 data, of 3,050 tons per month from new scrap and 2,510 tons per month from old scrap of copper recovered from scrap other than copper-base.

TABLE 6
PRODUCTION, SHIPMENTS, AND STOCKS OF BRASS AND WIRE-ROD SEMIFABRICATES¹

(Metric tons, gross weight)

Period	Production		Shipments		Stocks, end of period	
	Brass mills	Wire-rod mills	Brass mills	Wire-rod mills	Brass mills	Wire-rod mills
2016: ^p						
January–April	296,000	447,000	295,000	439,000	29,200	29,400
May	72,300	110,000	73,700	111,000	27,800	28,300
June	72,300	112,000	71,200	110,000	28,900	30,200
July	72,800	103,000	72,700	103,000	29,100	29,600
August	74,400	113,000	73,800	113,000	29,600	29,600
September	72,500	106,000	73,500	110,000	28,700	25,200
October	74,800	111,000	75,100	109,000	28,500	27,100
November	72,700	108,000	72,800	107,000	28,300	28,100
December	72,300	96,100	72,100	97,900	28,500	26,300
January–December	880,000	1,310,000	880,000	1,300,000	28,500	26,300
2017:						
January	73,500	111,000	72,900	113,000	29,100	23,600
February	72,800	102,000	73,100	97,100	28,900	28,600
March	74,200	110,000	74,400	113,000	28,600	26,000
April	72,200 ^r	107,000	72,800 ^r	103,000	28,000 ^r	30,300
May	74,700	109,000	74,500	113,000	28,300	26,100
January–May	367,000	539,000	368,000	539,000	28,300	26,100

^pPreliminary. ^rRevised.

¹Data are rounded to no more than three significant digits; may not add to totals shown.

TABLE 7
CONSUMPTION OF REFINED COPPER¹

(Metric tons)

Period	Brass mills	Wire-rod mills	Other plants ²	Total
2016: ^p				
January–April	141,000	440,000	23,300	604,000
May	34,400	108,000	5,820	149,000
June	35,500	110,000	5,820	151,000
July	35,500	100,000	5,820	142,000
August	35,600	111,000	5,820	153,000
September	35,400	103,000	5,820	145,000
October	35,400	110,000	5,820	151,000
November	34,400	110,000	5,820	150,000
December	33,800	93,000	5,820	133,000
January–December	421,000	1,290,000	69,800	1,780,000
2017:				
January	34,600	108,000	5,820	148,000
February	34,800	109,000	5,820	150,000
March	35,300	108,000	5,820	149,000
April	34,200 ^r	106,000	5,820	146,000 ^r
May	35,300	108,000	5,820	149,000
January–May	174,000	538,000	29,100	742,000

^pPreliminary. ^rRevised.

¹Data are rounded to no more than three significant digits; may not add to totals shown.

²Monthly and 2016 cumulative consumption data by ingot makers, chemical plants, foundries, and miscellaneous manufacturers is estimated based on 2015 annual data.

TABLE 8
U.S. APPARENT CONSUMPTION OF COPPER¹

(Metric tons)

Period	Refined copper production	Copper in old scrap ²	Refined general imports ³	Refined exports ³	Stock change during period	Apparent consumption
2016: ^p						
January–April	399,000	58,400	195,000	57,700	(36,700)	631,000
May	99,900	12,400	52,400	22,000	(8,810)	152,000
June	94,200	12,800	63,400	5,600	(16,400)	181,000
July	97,200	12,400	68,200	6,510	9,060	162,000
August	97,900	12,600	62,200	6,420	6,690	160,000
September	99,500	13,100	66,800	6,630	23,800	149,000
October	102,000	13,000	67,600	7,750	13,900	161,000
November	95,300	12,800	65,900	13,100	21,700	139,000
December	90,800	12,700	59,400	8,040	13,300 ^r	142,000
January–December	1,180,000	160,000	701,000	134,000	26,500 ^r	1,880,000
2017:						
January	97,900	13,100	72,400	12,300	16,500 ^r	155,000 ^r
February	89,800	13,600	53,500	9,100	506	147,000
March	102,000	12,900	73,800	9,760	7,510	172,000
April	87,800	12,900	51,400	12,200	(1,030) ^r	141,000
May	81,400	13,100	63,200	9,230	(24,000)	172,000
January–May	459,000	65,500	314,000	52,600	(505)	787,000

^pPreliminary. ^rRevised.

¹Data are rounded to no more than three significant digits; may not add to totals shown.

²Includes reported monthly production of copper from old scrap of copper-base, an estimate for annual reporters, and a monthly average of copper from non-copper-base materials based on 2015 data.

³Source: U.S. Census Bureau.

TABLE 9
CONSUMPTION OF PURCHASED COPPER-BASE SCRAP¹

(Metric tons, gross weight)

Period	Smelters and refineries		Ingot makers ²		Brass and wire-rod mills ³		Foundries, etc. ²		Total scrap used
	New scrap	Old scrap	New scrap	Old scrap	New scrap	Old scrap	New scrap	Old scrap	
2016: ^p									
January–April	6,770	9,770	11,600	21,800	220,000	12,900	14,600	3,970	301,000
May	1,660	1,570	2,890	5,460	58,400	2,690	3,660	992	77,300
June	1,730	1,590	2,890	5,460	57,500	3,090	3,660	992	76,900
July	1,730	1,590	2,890	5,460	56,200	2,670	3,660	992	75,100
August	1,730	1,590	2,890	5,460	56,900	2,870	3,660	992	76,000
September	1,730	1,590	2,890	5,460	57,600	2,800	3,660	992	76,700
October	1,730	1,590	2,890	5,460	59,800	3,120	3,660	992	79,200
November	1,730	1,590	2,890	5,460	58,000	3,250	3,660	992	77,500
December	1,730	1,590	2,890	5,460	57,100	2,990	3,660	992	76,400
January–December	20,500	22,400	34,700	65,500	681,000	36,400	43,900	11,900	917,000
2017:									
January	1,820	4,630	2,890	5,460	57,500	3,490	3,660	992	80,400
February	1,820	4,630	2,890	5,460	58,000	3,040	3,660	992	80,500
March	1,820	4,630	2,890	5,460	60,100	3,240	3,660	992	82,700
April	1,820	4,630	2,890	5,460	59,300 ^r	3,190	3,660	992	81,900 ^r
May	1,820	4,630	2,890	5,460	60,100	3,250	3,660	992	82,800
January–May	9,120	23,100	14,500	27,300	295,000	16,200	18,300	4,960	408,000

^pPreliminary. ^rRevised.

¹Data are rounded to no more than three significant digits; may not add to totals shown.

²Monthly data estimated from 2015 annual data.

³Consumption at brass and wire-rod mills assumed equal to receipts.

TABLE 10
COPPER STOCKS AT END OF PERIOD¹

(Metric tons)

Period	Crude copper ²	Refined copper					LME ⁵	Total refined
		Refineries ³	Wire-rod mills ³	Brass mills ³	Other ⁴	Comex		
2016: ^p								
May	15,500	3,950	40,100	8,670	5,730	55,400	49,300	163,000
June	18,700	2,820	37,300	7,680	5,730	56,600	36,600	147,000
July	13,500	3,040	41,200	7,940	5,730	59,300	38,600	156,000
August	12,500	5,660	38,500	7,930	5,730	61,000	43,600	162,000
September	12,600	4,230	39,500	7,650	5,730	64,000	65,200	186,000
October	14,700	3,230	40,200	7,270	5,730	65,300	78,400	200,000
November	13,800	4,290	41,800	7,070	5,730	70,600	92,400	222,000
December	14,400 ^r	4,190 ^r	38,900	7,380	5,730	80,100	98,900	235,000
2017:								
January	11,700	9,250	40,900	7,430	5,730	92,600	95,700	252,000
February	13,200	8,010	37,400	7,330	5,730	114,000	79,600	252,000
March	13,500	3,860	45,800	7,050	5,730	130,000	67,200	260,000
April	26,100	5,980	43,300	8,030 ^r	5,730	141,000	54,700	259,000 ^r
May	11,000	5,280	41,100	7,410	5,730	143,000	31,900	235,000

^pPreliminary. ^rRevised.

¹Data are rounded to no more than three significant digits; may not add to totals shown.

²Copper content of blister and anode.

³Stocks of refined copper as reported; no estimates are made for nonrespondents.

⁴Monthly estimates based on reported and 2015 annual data, comprising stocks at ingot makers, chemical plants, foundries, and miscellaneous manufacturers.

⁵London Metal Exchange Ltd., U.S. warehouses.

TABLE 11
AVERAGE PRICE OF COPPER IN THE UNITED STATES
AND ON THE LONDON METAL EXCHANGE

(Cents per pound)

Period	U.S. producers cathode ¹	Comex first position ²	LME cash price Grade A
2016:			
May	216.831	211.143	213.544
June	215.520	209.770	210.025
July	226.296	220.733	220.235
August	219.284	214.096	215.811
September	218.752	213.752	213.496
October	218.885	214.010	214.629
November	251.388	246.638	246.878
December	261.183	256.683	256.997
January–December	224.873	219.727	220.571
2017:			
January	266.363	261.863	260.225
February	274.051	269.426	269.484
March	269.122	264.122	264.040
April	263.626	258.626	258.428
May	259.902	254.902	253.608
January–May	266.613	261.788	261.157

¹Sum of "Comex high grade first position" and "NY dealer premium cathode."

²Listed as "Comex high grade first position."

Source: Platts Metals Week.

TABLE 12
AVERAGE BUYING PRICES FOR COPPER SCRAP

(Cents per pound)

Month	Brass mills No. 1 scrap	Refiners No. 2 scrap	Dealers (New York)	
			No. 2 scrap	Red brass turnings and borings
2016:				
May	210.83	192.43	154.26	132.38
June	210.30	191.68	150.27	130.14
July	221.00	201.70	157.15	134.10
August	213.54	192.26	156.20	133.35
September	213.43	191.88	153.21	131.57
October	212.71	190.05	153.88	131.95
November	241.32	218.05	165.00	137.50
December	248.38	224.48	181.98	146.00
January–December	218.01	197.52	155.05	132.17
2017:				
January	254.78	228.38	178.80	144.65
February	261.50	234.00	186.97	148.00
March	256.70	228.57	183.67	146.30
April	251.10	225.95	179.50	145.00
May	249.41	225.32	177.23	144.36
January–May	254.70	228.44	181.23	145.66

Source: American Metal Market.

TABLE 13
U.S. IMPORTS FOR CONSUMPTION OF COPPER (UNMANUFACTURED), BY CLASS¹

(Metric tons, copper content)

Country or territory	Ore and concentrate			Matte, ash, and precipitates			Blister and anodes			Refined		
	2017			2017			2017			2017		
	January–			January–			January–			January–		
	2016	May	May	2016	May	May	2016	May	May	2016	May	May
Belgium	--	--	--	27	--	25	--	--	--	--	--	(2)
Canada	33	2	2	355	57	110	2	--	--	193,000	15,400	77,700
Chile	--	--	--	--	--	--	--	--	--	354,000	38,600	211,000
China	--	--	--	--	--	--	(2)	--	--	76	7	15
Congo (Kinshasa)	--	--	--	--	--	--	--	--	--	21,100	785	4,290
Finland	--	--	--	--	--	--	175	32	132	110	--	2
Germany	--	--	--	--	--	--	(2)	--	--	1,830	151	799
India	3	--	--	--	--	--	--	--	--	1,210	--	224
Japan	--	--	--	109	--	(2)	3	(2)	(2)	4,090	400	1,900
Mexico	3	--	10,600	41	(2)	10	--	--	--	102,000	6,860	31,800
Netherlands	--	--	--	69	--	58	(2)	--	2	(2)	--	3
Peru	--	--	--	--	--	--	--	--	--	24,800	--	2,450
Other	27	--	9	205	31	282	93	1	30	4,100	1,210	2,480
Total	67	2	10,700	806	88	485	274	33	164	708,000	63,500	332,000

-- Zero.

¹Data are rounded to no more than three significant digits; may not add to totals shown.

²Less than ½ unit.

Source: U.S. Census Bureau.

TABLE 14
U.S. EXPORTS OF COPPER (UNMANUFACTURED), BY CLASS¹

(Metric tons, copper content)

Country or territory	Ore and concentrate			Matte, ash, and precipitates			Blister and anodes			Refined		
	2017			2017			2017			2017		
	January–			January–			January–			January–		
	2016	May	May	2016	May	May	2016	May	May	2016	May	May
Belgium	(2)	--	--	5,700	365	2,860	679	31	183	--	--	(2)
Canada	25,800	2,550	12,300	12,300	1,550	5,410	2,050	227	1,630	32,400	2,170	10,200
China	57,100	4,860	21,200	52	4	4	485	--	44	32,600	570	10,000
Germany	--	--	--	204	93	397	517	22	62	21	--	1
Hong Kong	--	--	--	36	--	--	1,070	79	481	--	--	--
Italy	--	--	--	--	--	--	377	1	110	240	1	3
Japan	20,400	--	19	180	--	50	453	13	39	157	3	8
Korea, Republic of	138	31	64	352	39	93	1,420	94	844	85	816	1,870
Mexico	226,000	16,000	56,100	--	--	--	99	3	74	67,700	5,640	30,000
Singapore	--	--	--	--	--	--	42	--	10	13	--	4
Spain	--	--	--	40	--	--	266	20	81	4	--	1
Switzerland	--	--	--	--	--	--	24	1	15	5	1	1
Taiwan	--	--	--	359	--	54	60	--	60	62	--	5
Other	853	13	57	883	--	19	1,970	149	703	518	31	594
Total	331,000	23,400	89,800	20,100	2,050	8,890	9,510	640	4,330	134,000	9,230	52,600

-- Zero.

¹Data are rounded to no more than three significant digits; may not add to totals shown.

²Less than ½ unit.

Source: U.S. Census Bureau.

TABLE 15
U.S. COPPER SCRAP IMPORTS¹

(Metric tons, gross weight)

Country or territory	Unalloyed			Alloyed		
	2017			2017		
	2016	May	January– May	2016	May	January– May
Canada	13,300	1,970	8,980	52,200	7,080	33,000
Chile	41	--	18	211	17	172
Colombia	259	--	245	1,180	120	543
Costa Rica	344	94	271	1,030	95	447
Guatemala	--	--	29	326	13	119
Honduras	102	--	19	357	29	137
Mexico	12,900	792	3,870	34,400	2,930	14,700
Nicaragua	--	--	--	264	20	68
Other	2,170	338	1,270	6,180	741	3,620
Total	29,100	3,190	14,700	96,100	11,000	52,900

-- Zero.

¹Data are rounded to no more than three significant digits; may not add to totals shown.

Source: U.S. Census Bureau.

TABLE 16
U.S. COPPER SCRAP EXPORTS¹

(Metric tons, gross weight)

Country or territory	Unalloyed							Alloyed				
	2017							2017				
	No. 1		No. 2		Other			Segregated		Unsegregated		
	January–		January–		January–			January–		January–		
	2016	May	May	May	May	May	May	2016	May	May	May	May
Belgium	9,030	186	1,000	133	780	99	865	8,390	59	620	870	2,100
Canada	23,400	--	--	--	--	4,010	19,400	51,200	--	--	4,070	25,000
China	284,000	10,800	49,500	6,250	35,000	10,100	52,800	376,000	9,290	47,300	20,400	104,000
Germany	24,900	1,200	6,230	285	1,210	86	498	8,130	217	341	749	3,080
Hong Kong	6,550	198	858	114	662	751	2,530	17,100	1,290	2,550	3,340	9,530
India	1,670	197	491	2	181	299	939	23,000	2,910	7,940	552	1,240
Japan	6,460	105	476	609	2,310	295	1,670	8,730	15	317	1,040	4,560
Korea, Republic of	17,000	611	3,610	102	413	592	2,030	10,300	779	2,550	276	1,660
Mexico	1,660	244	1,110	--	--	26	95	950	3	21	55	122
Netherlands	12,100	60	1,310	--	97	374	1,730	1,170	--	--	--	38
Spain	182	24	139	20	103	--	20	7,770	--	328	467	1,970
Taiwan	8,290	228	1,780	47	495	79	164	1,740	64	309	20	379
Thailand	121	79	79	--	--	(2)	4	1,050	20	78	--	--
Other	16,100	112	5,130	31	733	112	374	16,900	220	1,460	1,230	6,010
Total	411,000	14,000	71,700	7,590	42,000	16,800	83,100	532,000	14,900	63,800	33,000	160,000

-- Zero.

¹Data are rounded to no more than three significant digits; may not add to totals shown.

²Less than ½ unit.

Source: U.S. Census Bureau.