

Mineral Industry Surveys

For information, contact:

Daniel M. Flanagan, Copper Commodity Specialist
National Minerals Information Center
U.S. Geological Survey
989 National Center
Reston, VA 20192
Telephone: (703) 648-7726, Fax: (703) 648-7757
Email: dflanagan@usgs.gov

Samir Hakim (Data)
Telephone: (703) 648-7955
Fax: (703) 648-7975
Email: shakim@usgs.gov

Internet: <http://minerals.usgs.gov/minerals/>

COPPER IN APRIL 2017

In April 2017, domestic mine production of recoverable copper was 109,000 metric tons (t). The average daily mine production was 3,650 t, slightly less than that in March and a decrease of 9% compared with April 2016. Year-to-date recoverable mine production through April 2017 was 434,000 t, a decline of 10% relative to the same period in 2016.

Total U.S. refinery production in April 2017 was 91,000 t; electrolytic and electrowon production data are available in table 4. Average daily total refinery production was 3,040 t, a decline of 11% compared with that in March and 9% less than that in April 2016. A scheduled maintenance shutdown at Freeport-McMoRan Inc.'s (Phoenix, AZ) Miami smelter in Arizona affected refined copper output during April 2017 (Freeport-McMoRan Inc., 2017, p. 23). Year-to-date refinery production through April 2017 was 391,000 t, a decrease of 6% relative to the same period in 2016 (fig. 1; tables 2, 4).

Smelter production in April 2017 was 40,700 t. The average daily smelter production was 1,360 t, 20% less than that in March and 14% lower than the daily average in April 2016. Year-to-date smelter production through April 2017 was 190,000 t, an increase of 5% compared with the same period during the prior year (table 3, 4).

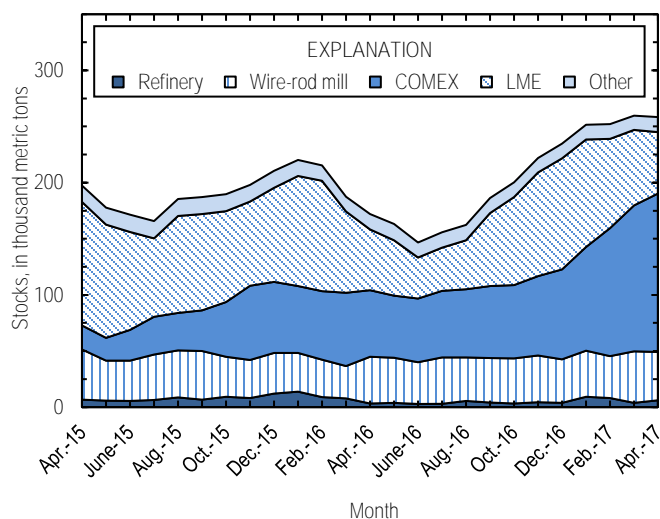


Figure 2. Monthly domestic refined copper stocks, by type, from April 2015 through April 2017. Sources: American Metal Market, London Metal Exchange Ltd., and U.S. Geological Survey.

Stocks

Refined copper stocks in the United States totaled 258,000 t at the end of April 2017, a slight decline from those in March and 50% greater than those in April 2016. Prior to April 2017, U.S. copper stocks increased for nine consecutive months. COMEX stocks rose by 8%, stocks at wire-rod mills fell by 5%, and London Metal Exchange Ltd. stocks decreased by 19% compared with those at the end of March (fig. 2, table 10).

Prices

The average April 2017 COMEX spot copper price was \$2.59 per pound, slightly less than \$2.64 per pound in March and 18% greater than \$2.18 per pound in April 2016 (fig. 3, table 11). Lower-than-expected domestic demand (particularly in the construction industry) and a high availability of copper scrap contributed to the price decline (Barker, 2017). The average price of New York dealers' number 2 scrap in April 2017 was

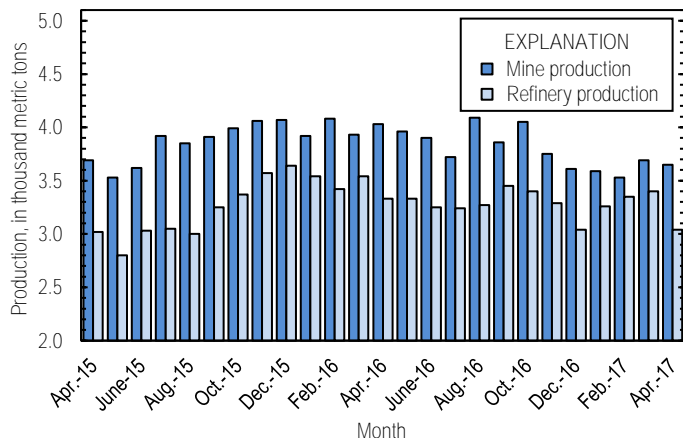


Figure 1. Average daily U.S. copper mine (recoverable) and refinery production from April 2015 through April 2017. Source: U.S. Geological Survey.

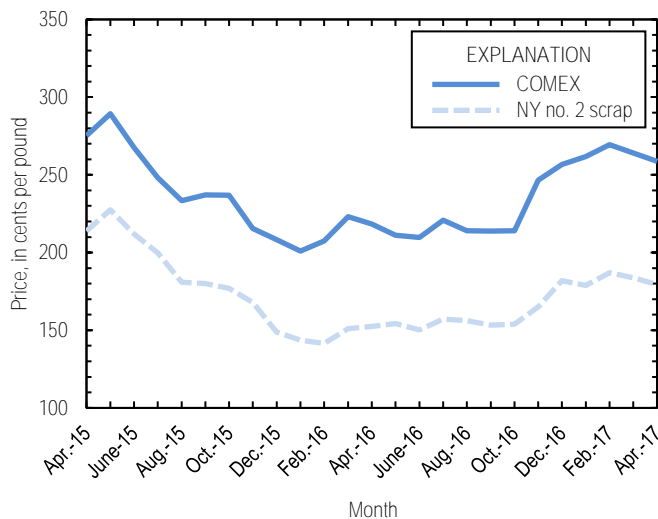


Figure 3. Monthly average COMEX copper price and New York no. 2 copper scrap price from April 2015 through April 2017. Sources: American Metal Market, Platts Metals Week.

\$1.80 per pound, down slightly from the average price in March and 18% higher than the average price in April 2016 (table 12).

Industry News

PT Freeport Indonesia, a subsidiary of Freeport-McMoRan Inc., resumed exports of copper concentrate from the Grasberg Mine in late April. Freeport’s license to ship concentrates from Indonesia had expired on January 11, leading the company to

halt mining operations at Grasberg from February 10 through March 20 (Hotter, 2017; Teo, 2017). A new temporary license will permit exports through October 10, and negotiations with the Government of Indonesia to reach a long-term agreement were ongoing. Owing primarily to the export dispute, Freeport reported that its total copper sales in the first quarter of 2017 were nearly 87,000 t less than those during the first quarter of 2016 (Mir, 2017; Yang, 2017).

References Cited

Barker, Dalton, 2017, Copper players grow bleak as summer nears: American Metal Market, April 19. (Accessed April 21, 2017, via <http://www.amm.com/>.)

Freeport-McMoRan Inc., 2017, Form 10-K—2016: U.S. Securities and Exchange Commission, February 24, 193 p. (Accessed June 20, 2017, via <https://www.sec.gov/edgar/searchedgar/companysearch.html>.)

Hotter, Andrea, 2017, Freeport halts Grasberg concentrate output: American Metal Market, February 14. (Accessed February 15, 2017, via <http://www.amm.com/>.)

Mir, Fawad, 2017, Freeport receives temporary permit to resume exports from Grasberg: S&P Global Market Intelligence, April 4. (Accessed April 7, 2017, via <http://www.snl.com/>.)

Teo, Vivian, 2017, Freeport seeks ‘workable’ Indonesia solution: American Metal Market, March 31. (Accessed April 3, 2017, via <http://www.amm.com/>.)

Yang, Justin, 2017, Freeport resumes Indonesia concentrate exports: American Metal Market, April 25. (Accessed April 27, 2017, via <http://www.amm.com/>.)

List services and web feed subscribers are the first to receive notification of USGS minerals information publications and data releases. For information on how to subscribe, go to <http://minerals.usgs.gov/minerals/>.

TABLE 1
SALIENT STATISTICS OF THE COPPER INDUSTRY IN THE UNITED STATES¹

(Metric tons, unless otherwise specified)

	Source table ²	2016 ^p	2017			
			February	March	April	January– April
Production:						
Primary:						
Mine, recoverable	(2)	1,430,000	98,700 ^r	114,000	109,000	434,000
Smelter, total	(3)	563,000	47,800	52,200	40,700	190,000
Refinery:						
Electrolytic, domestic and foreign	(4)	561,000	48,200	53,200	42,300	195,000
Electrowon	(4)	615,000	41,600	49,000	45,600	183,000
Total	(4)	1,180,000	89,800	102,000	87,800	378,000
Secondary recoverable copper:						
Refineries	(5)	46,300	4,090	3,240	3,230	13,800
Ingot makers ³	(5)	73,100	6,090	6,090	6,090	24,400
Brass and wire-rod mills	(5)	621,000	53,000	55,100	54,700	216,000
Foundries, etc. ³	(5)	47,200	3,940	3,940	3,940	15,700
Consumption:						
Apparent	(8)	1,880,000	147,000	172,000	141,000	614,000
Refined (reported)	(7)	1,780,000	150,000	149,000	147,000	593,000
Purchased copper-base scrap	(9)	917,000	80,500	82,700	82,200	326,000
Stocks at end of period:						
Total refined	(10)	235,000	252,000	260,000	258,000	258,000
Blister, etc.	(10)	14,200	13,200	13,500	26,100	26,100
Prices, U.S. producers cathode (cents per pound) ⁴	(11)	224.873	274.051	269.122	263.626	268.291
Imports: ⁵						
Ore and concentrate ⁶	(13)	67 ^r	1,590	9,050	9	10,700
Refined	(13)	708,000	59,600	84,800	51,900	269,000
Exports: ⁵						
Ore and concentrate ⁶	(14)	331,000	14,000	17,200	26,400	66,400
Refined	(14)	134,000	9,100	9,760	12,200	43,400

^pPreliminary. ^rRevised.

¹Data are rounded to no more than three significant digits, except prices; may not add to totals shown.

²Numbers in parentheses refer to the tables where these data are located.

³Monthly data estimated based on 2015 monthly average.

⁴Source: Platts Metals Week.

⁵Source: U.S. Census Bureau.

⁶Copper content.

TABLE 2
MINE PRODUCTION OF RECOVERABLE COPPER IN THE UNITED STATES¹

(Metric tons)

Period	Recoverable copper			Contained copper		
	Arizona	Others ²	Total	Electrowon	Concentrates ³	Total
2016: ^p						
April	81,200	39,500	121,000	49,700	73,900	124,000
May	83,500	39,400	123,000	51,700	74,000	126,000
June	79,800	37,200	117,000	50,700	69,000	120,000
July	80,200	35,100	115,000	54,000	63,700	118,000
August	86,400	40,300	127,000	52,700	76,900	130,000
September	79,400	36,400	116,000	51,400	67,000	118,000
October	81,800	43,700	125,000	53,300	74,900	128,000
November	74,200	38,200	112,000	48,700	66,100	115,000
December	76,600	35,300	112,000	47,900	66,600	115,000
January–December	969,000	461,000	1,430,000	615,000	848,000	1,460,000
2017:						
January	71,000 ^r	40,200	111,000	46,800	66,900 ^r	114,000 ^r
February	64,200 ^r	34,500	98,700 ^r	41,600	59,400 ^r	101,000
March	77,500	36,800	114,000	49,000	67,900	117,000
April	72,500	36,800	109,000	45,600	66,300	112,000
January–April	285,000	148,000	434,000	183,000	261,000	443,000

^pPreliminary. ^rRevised.

¹Data are rounded to no more than three significant digits; may not add to totals shown.

²Includes production from Michigan, Missouri, Montana, Nevada, New Mexico, and Utah.

³Includes copper content of precipitates and other metal concentrates.

TABLE 3
COPPER PRODUCED AT SMELTERS IN
THE UNITED STATES^{1, 2}

(Metric tons, copper content)

Period	Anode production
2016: ^p	
April	47,300
May	51,900
June	45,400
July	33,100
August	47,700
September	54,000
October	51,900
November	43,300
December	55,000
January–December	563,000
2017:	
January	48,900
February	47,800
March	52,200
April	40,700
January–April	190,000

^pPreliminary.

¹Includes blister and copper anode from primary or secondary sources.

²Data are rounded to no more than three significant digits; may not add to total shown.

TABLE 4
PRODUCTION OF REFINED COPPER, BY SOURCE AND METHOD OF RECOVERY¹

(Metric tons)

Period	Primary materials			Scrap	Total refined
	Electrolytically refined ²	Electrowon	Total		
2016: ^p					
April	47,100	49,700	96,800	3,200	100,000
May	48,200	51,700	99,900	3,180	103,000
June	43,600	50,700	94,200	3,260	97,500
July	43,200	54,000	97,200	3,280	100,000
August	45,200	52,700	97,900	3,300	101,000
September	48,200	51,400	99,500	3,810	103,000
October	48,800	53,300	102,000	3,410	105,000
November	46,600	48,700	95,300	3,220	98,500
December	42,900	47,900	90,800	3,330	94,100
January–December	561,000	615,000	1,180,000	46,300	1,220,000
2017:					
January	51,100	46,800	97,900	3,240	101,000
February	48,200	41,600	89,800	4,090	93,900
March	53,200	49,000	102,000	3,240	105,000
April	42,300	45,600	87,800	3,230	91,000
January–April	195,000	183,000	378,000	13,800	391,000

^pPreliminary.

¹Data are rounded to no more than three significant digits; may not add to totals shown.

²From domestic and foreign source materials.

TABLE 5
COPPER RECOVERABLE IN UNALLOYED AND ALLOYED FORM FROM PURCHASED COPPER-BASE SCRAP¹

(Metric tons, copper content)

Period	Refineries ²		Ingot makers ³		Brass and wire-rod mills		Foundries, etc. ³		Total ⁴
	New scrap	Old scrap	New scrap	Old scrap	New scrap	Old scrap	New scrap	Old scrap	
2016: ^p									
April	1,630	1,570	1,290	4,800	50,500	2,790	3,040	898	66,500
May	1,610	1,570	1,290	4,800	50,400	2,610	3,040	898	66,200
June	1,680	1,580	1,290	4,800	49,600	3,000	3,040	898	65,800
July	1,680	1,600	1,290	4,800	48,200	2,600	3,040	898	64,100
August	1,680	1,620	1,290	4,800	48,900	2,790	3,040	898	65,000
September	1,680	2,130	1,290	4,800	49,700	2,730	3,040	898	66,300
October	1,680	1,740	1,290	4,800	51,800	3,020	3,040	898	68,300
November	1,680	1,540	1,290	4,800	49,900	3,060	3,040	898	66,200
December	1,680	1,650	1,290	4,800	49,100	2,860	3,040	898	65,300
January–December	19,900	26,400	15,400	57,600	586,000	35,200	36,500	10,800	788,000
2017:									
January	1,680	1,560	1,290	4,800	49,500	3,360	3,040	898	66,100
February	1,680	2,420	1,290	4,800	50,100	2,940	3,040	898	67,100
March	1,680	1,560	1,290	4,800	52,000	3,110	3,040	898	68,400
April	1,680	1,550	1,290	4,800	51,600	3,110	3,040	898	68,000
January–April	6,710	7,090	5,150	19,200	203,000	12,500	12,200	3,590	270,000

^pPreliminary.

¹Data are rounded to no more than three significant digits; may not add to totals shown.

²Electrolytically refined and fire-refined from scrap based on source of material at smelter or refinery level.

³Monthly data and 2016 cumulative data estimated based on 2015 annual data.

⁴Does not include an estimate, based on reported 2015 data, of 3,050 tons per month from new scrap and 2,510 tons per month from old scrap of copper recovered from scrap other than copper-base.

TABLE 6
PRODUCTION, SHIPMENTS, AND STOCKS OF BRASS AND WIRE-ROD SEMIFABRICATES¹

(Metric tons, gross weight)

Period	Production		Shipments		Stocks, end of period	
	Brass mills	Wire-rod mills	Brass mills	Wire-rod mills	Brass mills	Wire-rod mills
2016: ^P						
April	73,500	109,000	73,300	108,000	29,200	29,400
May	72,300	110,000	73,700	111,000	27,800	28,300
June	72,300	112,000	71,200	110,000	28,900	30,200
July	72,800	103,000	72,700	103,000	29,100	29,600
August	74,400	113,000	73,800	113,000	29,600	29,600
September	72,500	106,000	73,500	110,000	28,700	25,200
October	74,800	111,000	75,100	109,000	28,500	27,100
November	72,700	108,000	72,800	107,000	28,300	28,100
December	72,300	96,100	72,100	97,900	28,500	26,300
January–December	880,000	1,310,000	880,000	1,300,000	28,500	26,300
2017:						
January	73,500	111,000	72,900	113,000	29,100	23,600
February	72,800	102,000	73,100	97,100	28,900	28,600
March	74,200 ^r	110,000	74,400 ^r	113,000	28,600 ^r	26,000
April	73,400	107,000	73,500	103,000	28,500	30,300
January–April	294,000	430,000	294,000	426,000	28,500	30,300

^PPreliminary. ^rRevised.

¹Data are rounded to no more than three significant digits; may not add to totals shown.

TABLE 7
CONSUMPTION OF REFINED COPPER¹

(Metric tons)

Period	Brass mills	Wire-rod mills	Other plants ²	Total
2016: ^P				
April	34,900	107,000	5,820	148,000
May	34,400	108,000	5,820	149,000
June	35,500	110,000	5,820	151,000
July	35,500	100,000	5,820	142,000
August	35,600	111,000	5,820	153,000
September	35,400	103,000	5,820	145,000
October	35,400	110,000	5,820	151,000
November	34,400	110,000	5,820	150,000
December	33,800	93,000	5,820	133,000
January–December	421,000	1,290,000	69,800	1,780,000
2017:				
January	34,600	108,000	5,820	148,000
February	34,800	109,000	5,820	150,000
March	35,300	108,000	5,820	149,000
April	34,900	106,000	5,820	147,000
January–April	140,000	431,000	23,300	593,000

^PPreliminary.

¹Data are rounded to no more than three significant digits; may not add to totals shown.

²Monthly and 2016 cumulative consumption data by ingot makers, chemical plants, foundries, and miscellaneous manufacturers is estimated based on 2015 annual data.

TABLE 8
U.S. APPARENT CONSUMPTION OF COPPER¹

(Metric tons)

Period	Refined copper production	Copper in old scrap ²	Refined general imports ³	Refined exports ³	Stock change during period	Apparent consumption
2016: ^P						
April	96,800	12,600	51,800 ^r	9,650	(15,500)	167,000 ^r
May	99,900	12,400	52,400	22,000	(8,810)	152,000
June	94,200	12,800	63,400	5,600	(16,400)	181,000
July	97,200	12,400	68,200	6,510	9,060	162,000
August	97,900	12,600	62,200 ^r	6,420	6,690	160,000 ^r
September	99,500	13,100	66,800 ^r	6,630	23,800	149,000
October	102,000	13,000	67,600 ^r	7,750	13,900	161,000 ^r
November	95,300	12,800	65,900 ^r	13,100	21,700	139,000
December	90,800	12,700	59,400 ^r	8,040	12,800	142,000 ^r
January–December	1,180,000	160,000	701,000 ^r	134,000 ^r	26,100	1,880,000
2017:						
January	97,900	13,100	72,400	12,300	17,000	154,000
February	89,800	13,600	53,500	9,100	506	147,000
March	102,000	12,900	73,800	9,760	7,510	172,000
April	87,800	12,900	51,400	12,200	(1,470)	141,000
January–April	378,000	52,400	251,000	43,400	23,500	614,000

^PPreliminary. ^rRevised.

¹Data are rounded to no more than three significant digits; may not add to totals shown.

²Includes reported monthly production of copper from old scrap of copper-base, an estimate for annual reporters, and a monthly average of copper from non-copper-base materials based on 2015 data.

³Source: U.S. Census Bureau.

TABLE 9
CONSUMPTION OF PURCHASED COPPER-BASE SCRAP¹

(Metric tons, gross weight)

Period	Smelters and refineries		Ingot makers ²		Brass and wire-rod mills ³		Foundries, etc. ²		Total scrap used
	New scrap	Old scrap	New scrap	Old scrap	New scrap	Old scrap	New scrap	Old scrap	
2016: ^P									
April	1,680	1,570	2,890	5,460	58,400	2,880	3,660	992	77,600
May	1,660	1,570	2,890	5,460	58,400	2,690	3,660	992	77,300
June	1,730	1,590	2,890	5,460	57,500	3,090	3,660	992	76,900
July	1,730	1,590	2,890	5,460	56,200	2,670	3,660	992	75,100
August	1,730	1,590	2,890	5,460	56,900	2,870	3,660	992	76,000
September	1,730	1,590	2,890	5,460	57,600	2,800	3,660	992	76,700
October	1,730	1,590	2,890	5,460	59,800	3,120	3,660	992	79,200
November	1,730	1,590	2,890	5,460	58,000	3,250	3,660	992	77,500
December	1,730	1,590	2,890	5,460	57,100	2,990	3,660	992	76,400
January–December	20,500	22,400	34,700	65,500	681,000	36,400	43,900	11,900	917,000
2017:									
January	1,820	4,630	2,890	5,460	57,500	3,490	3,660	992	80,400
February	1,820	4,630	2,890	5,460	58,000	3,040	3,660	992	80,500
March	1,820	4,630	2,890	5,460	60,100	3,240	3,660	992	82,700
April	1,820	4,630	2,890	5,460	59,600	3,190	3,660	992	82,200
January–April	7,300	18,500	11,600	21,800	235,000	13,000	14,600	3,970	326,000

^PPreliminary.

¹Data are rounded to no more than three significant digits; may not add to totals shown.

²Monthly data estimated from 2015 annual data.

³Consumption at brass and wire-rod mills assumed equal to receipts.

TABLE 10
COPPER STOCKS AT END OF PERIOD¹

(Metric tons)

Period	Crude copper ²	Refined copper						Total refined
		Refineries ³	Wire-rod mills ³	Brass mills ³	Other ⁴	Comex	LME ⁵	
2016: ^P								
April	12,400	3,200	41,600	7,950	5,730	59,400	54,100	172,000
May	15,500	3,950	40,100	8,670	5,730	55,400	49,300	163,000
June	18,700	2,820	37,300	7,680	5,730	56,600	36,600	147,000
July	13,500	3,040	41,200	7,940	5,730	59,300	38,600	156,000
August	12,500	5,660	38,500	7,930	5,730	61,000	43,600	162,000
September	12,600	4,230	39,500	7,650	5,730	64,000	65,200	186,000
October	14,700	3,230	40,200	7,270	5,730	65,300	78,400	200,000
November	13,800	4,290	41,800	7,070	5,730	70,600	92,400	222,000
December	14,200	3,750	38,900	7,380	5,730	80,100	98,900	235,000
2017:								
January	11,700	9,250	40,900	7,430	5,730	92,600	95,700	252,000
February	13,200	8,010	37,400	7,330	5,730	114,000	79,600	252,000
March	13,500	3,860	45,800	7,050	5,730	130,000	67,200	260,000
April	26,100	5,980	43,300	7,590	5,730	141,000	54,700	258,000

^PPreliminary.

¹Data are rounded to no more than three significant digits; may not add to totals shown.

²Copper content of blister and anode.

³Stocks of refined copper as reported; no estimates are made for nonrespondents.

⁴Monthly estimates based on reported and 2015 annual data, comprising stocks at ingot makers, chemical plants, foundries, and miscellaneous manufacturers.

⁵London Metal Exchange Ltd., U.S. warehouses.

TABLE 11
AVERAGE PRICE OF COPPER IN THE UNITED STATES
AND ON THE LONDON METAL EXCHANGE

(Cents per pound)

Period	U.S. producers cathode ¹	Comex first position ²	LME cash price Grade A
2016:			
April	223.726	218.288	220.017
May	216.831	211.143	213.544
June	215.520	209.770	210.025
July	226.296	220.733	220.235
August	219.284	214.096	215.811
September	218.752	213.752	213.496
October	218.885	214.010	214.629
November	251.388	246.638	246.878
December	261.183	256.683	256.997
January–December	224.873	219.727	220.571
2017:			
January	266.363	261.863	260.225
February	274.051	269.426	269.484
March	269.122	264.122	264.040
April	263.626	258.626	258.428
January–April	268.291	263.509	263.044

¹Sum of "Comex high grade first position" and "NY dealer premium cathode."

²Listed as "Comex high grade first position."

Source: Platts Metals Week.

TABLE 12
AVERAGE BUYING PRICES FOR COPPER SCRAP

(Cents per pound)

Month	Brass mills No. 1 scrap	Refiners No. 2 scrap	Dealers (New York)	
			No. 2 scrap	Red brass turnings and borings
2016:				
April	217.98	199.00	152.50	130.00
May	210.83	192.43	154.26	132.38
June	210.30	191.68	150.27	130.14
July	221.00	201.70	157.15	134.10
August	213.54	192.26	156.20	133.35
September	213.43	191.88	153.21	131.57
October	212.71	190.05	153.88	131.95
November	241.32	218.05	165.00	137.50
December	248.38	224.48	181.98	146.00
January–December	218.01	197.52	155.05	132.17
2017:				
January	254.78	228.38	178.80	144.65
February	261.50	234.00	186.97	148.00
March	256.70	228.57	183.67	146.30
April	251.10	225.95	179.50	145.00
January–April	256.02	229.23	182.24	145.99

Source: American Metal Market.

TABLE 13
U.S. IMPORTS FOR CONSUMPTION OF COPPER (UNMANUFACTURED), BY CLASS¹

(Metric tons, copper content)

Country or territory	Ore and concentrate			Matte, ash, and precipitates			Blister and anodes			Refined		
	2017			2017			2017			2017		
	January–			January–			January–			January–		
	2016	April	April	2016	April	April	2016	April	April	2016	April	April
Belgium	--	--	--	27	--	25	--	--	--	--	(2)	(2)
Canada	33 ^r	--	--	355	3	52	2	--	--	193,000	13,100	62,300
Chile	--	--	--	--	--	--	--	--	--	354,000	33,600	172,000
China	--	--	--	--	--	--	(2)	--	--	76	(2)	8
Congo (Kinshasa)	--	--	--	--	--	--	--	--	--	21,100	508	3,500
Finland	--	--	--	--	--	--	175	31	99	110	1	2
Germany	--	--	--	--	--	--	(2)	--	--	1,830	230	648
India	3	--	--	--	--	--	--	--	--	1,210	--	224
Japan	--	--	--	109	--	(2)	3	--	(2)	4,090	360	1,500
Mexico	3	--	10,600	41	--	10	--	--	--	102,000	3,600	25,000
Netherlands	--	--	--	69	26	58	(2)	--	2	(2)	3	3
Peru	--	--	--	--	--	--	--	--	--	24,800	--	2,450
Other	27	9	9	205	95	251	93 ^r	(2)	29	4,100 ^r	379	1,270
Total	67 ^r	9	10,700	806	124	397	274	31	130	708,000	51,900	269,000

^rRevised. -- Zero.

¹Data are rounded to no more than three significant digits; may not add to totals shown.

²Less than ½ unit.

Source: U.S. Census Bureau.

TABLE 14
U.S. EXPORTS OF COPPER (UNMANUFACTURED), BY CLASS¹

(Metric tons, copper content)

Country or territory	Ore and concentrate			Matte, ash, and precipitates			Blister and anodes			Refined		
	2017			2017			2017			2017		
	2016	January–		2016	January–		2016	January–		2016	January–	
		April	April		April	April		April	April		April	April
Belgium	(2)	--	--	5,700	440	2,500	679	30	151	--	--	(2)
Canada	25,800	2,230	9,710	12,300	1,530	3,860	2,050	523	1,400	32,400 [†]	1,410	7,990
China	57,100 [†]	7,090	16,400	52	--	--	485	21	44	32,600	4,460	9,450
Germany	--	--	--	204	55	303	517	20	40	21	1	1
Hong Kong	--	--	--	36	--	--	1,070	59	402	--	--	--
Italy	--	--	--	--	--	--	377 [†]	38	108	240	(2)	2
Japan	20,400	10	19	180	--	50	453	13	26	157	4	5
Korea, Republic of	138	--	32	352	18	55	1,420	116	750	85	959	1,050
Mexico	226,000	17,000	40,200	--	--	--	99	9	71	67,700	4,870	24,400
Singapore	--	--	--	--	--	--	42	10	10	13	--	4
Spain	--	--	--	40	--	--	266	20	61	4	--	1
Switzerland	--	--	--	--	--	--	24	6	14	5	--	--
Taiwan	--	--	--	359	--	54	60	20	60	62	--	5
Other	853	9	45	883 [†]	19	19	1,970	182	553	518	513	561
Total	331,000	26,400	66,400	20,100	2,070	6,840	9,510 [†]	1,070	3,690	134,000	12,200	43,400

[†]Revised. -- Zero.

¹Data are rounded to no more than three significant digits; may not add to totals shown.

²Less than ½ unit.

Source: U.S. Census Bureau.

TABLE 15
U.S. COPPER SCRAP IMPORTS¹

(Metric tons, gross weight)

Country or territory	Unalloyed			Alloyed		
	2017			2017		
	2016	April	January– April	2016	April	January– April
Canada	13,300 ^r	1,770	7,010	52,200 ^r	7,510	26,000
Chile	41	18	18	211	40	155
Colombia	259	102	245	1,180	129	424
Costa Rica	344	56	177	1,030	67	351
Guatemala	--	--	29	326	45	106
Honduras	102	6	19	357	20	108
Mexico	12,900	850	3,080	34,400	2,570	11,800
Nicaragua	--	--	--	264	17	48
Other	2,170	160	937	6,180	438	2,880
Total	29,100	2,960	11,500	96,100	10,800	41,800

^rRevised. -- Zero.

¹Data are rounded to no more than three significant digits; may not add to totals shown.

Source: U.S. Census Bureau.

TABLE 16
U.S. COPPER SCRAP EXPORTS¹

(Metric tons, gross weight)

Country or territory	Unalloyed						Alloyed					
	2017						2017					
	No. 1		No. 2		Other		Segregated		Unsegregated			
	January–		January–		January–		January–		January–			
	2016	April	April	April	April	April	2016	April	April	April	April	April
Belgium	9,030	193	814	192	647	73	765	8,390 [†]	195	561	180	1,230
Canada	23,400	--	--	--	--	3,920	15,400	51,200	--	--	4,170	21,000
China	284,000 [†]	9,820	38,700	6,110	28,700	9,350	42,700	376,000 [†]	8,120	38,000	21,800	83,400
Germany	24,900	1,000	5,030	247	922	122	412	8,130 [†]	58	124	488	2,330
Hong Kong	6,550 [†]	194	660	204	548	978	1,780	17,100	840	1,260	2,260	6,190
India	1,670 [†]	117	294	121	179	257	641	23,000	1,780	5,030	235	685
Japan	6,460	129	372	345	1,700	257	1,370	8,730	105	302	971	3,520
Korea, Republic of	17,000 [†]	682	3,000	122	311	446	1,440	10,300	792	1,770	386	1,380
Mexico	1,660	250	869	--	--	20	68	950 [†]	--	18	15	66
Netherlands	12,100	290	1,250	37	97	334	1,360	1,170	--	--	20	38
Spain	182	104	116	35	83	--	20	7,770	--	328	554	1,510
Taiwan	8,290 [†]	238	1,560	167	448	5	86	1,740	57	246	60	359
Thailand	121	--	--	--	--	(2)	3	1,050	19	59	--	--
Other	16,100	648	5,020	23	701	114	262	16,900	311	1,240	1,780	4,780
Total	411,000 [†]	13,700	57,700	7,600	34,400	15,900	66,400	532,000 [†]	12,300	49,000	32,900	126,000

[†]Revised. -- Zero.

¹Data are rounded to no more than three significant digits; may not add to totals shown.

²Less than ½ unit.

Source: U.S. Census Bureau.