

Mineral Industry Surveys

For information, contact:

Daniel M. Flanagan, Copper Commodity Specialist
National Minerals Information Center
U.S. Geological Survey
989 National Center
Reston, VA 20192
Telephone: (703) 648-7726, Fax: (703) 648-7757
Email: dflanagan@usgs.gov

Samir Hakim (Data)
Telephone: (703) 648-7955
Fax: (703) 648-7975
Email: shakim@usgs.gov

Internet: <http://minerals.usgs.gov/minerals/>

COPPER IN MARCH 2017

In March 2017, domestic mine production of recoverable copper was 114,000 metric tons (t). The average daily mine production was 3,690 t, 4% greater than that in February and a decrease of 6% compared with March 2016. Year-to-date recoverable mine production through March 2017 was 324,000 t, a decline of 10% relative to the same period in 2016. Total U.S. refinery production in March 2017 was 105,000 t. Average daily refinery production was 3,400 t, slightly greater than that in February and 4% less than that in March 2016. Year-to-date refinery production through March 2017 was 300,000 t, a decline of 6% relative to the same period during the prior year (fig. 1; tables 2, 4).

U.S. electrolytic refinery production in March 2017 was 53,200 t, essentially unchanged on a daily basis compared with February and the daily average in March 2016. Electrowon production was 49,000 t, an increase of 6% on a daily basis relative to that in February and 5% less than the daily average in March 2016. Smelter production in March 2017 was 52,200 t, slightly less on a daily basis than that in February and 26% more than the daily average in March 2016. Year-to-date smelter production through March 2017 was 149,000 t, an increase of 12% compared with the same period in 2016 (tables 3, 4).

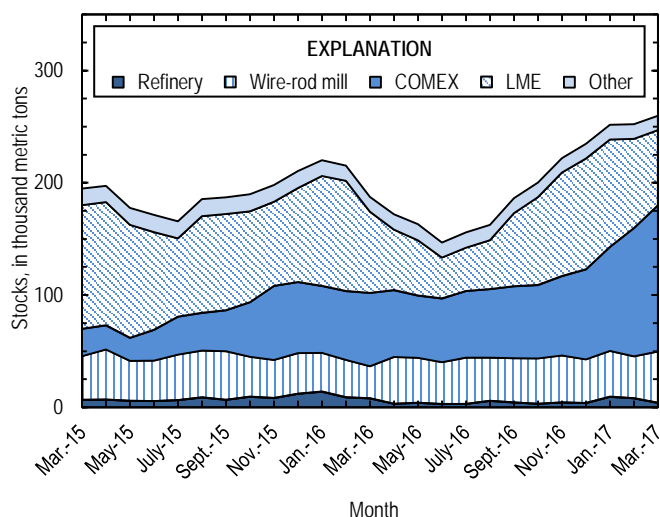


Figure 2. Monthly domestic refined copper stocks, by type, from March 2015 through March 2017. Sources: American Metal Market, London Metal Exchange Ltd., and U.S. Geological Survey.

Stocks

Refined copper stocks in the United States increased for the ninth consecutive month and totaled 260,000 t at the end of March 2017. Compared with those at the end of February, COMEX stocks rose by 14%, stocks at wire-rod mills increased by 23%, and London Metal Exchange Ltd. stocks decreased by 16%. Total refined stocks increased by 3% from those in February and were 39% greater than those in March 2016 (fig. 2, table 10).

Prices

The average March 2017 COMEX spot copper price was \$2.64 per pound, a slight decline from \$2.69 per pound in February and 18% greater than that in March 2016 (fig. 3, table 11). The average monthly copper price decreased in spite of work stoppages at several major worldwide copper mines owing to a large supply of copper scrap and high global inventories of

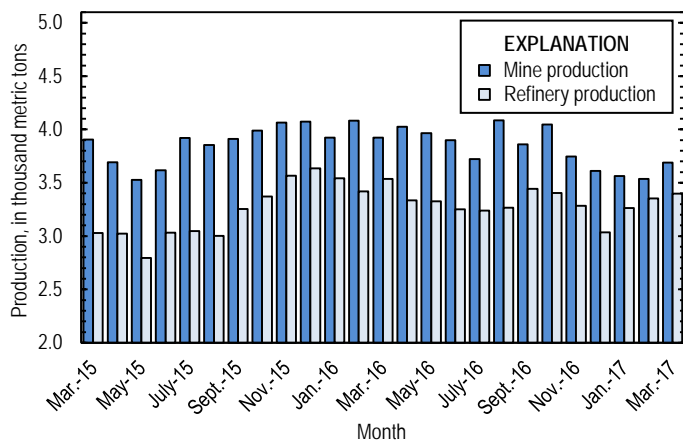


Figure 1. Average daily U.S. copper mine (recoverable) and refinery production from March 2015 through March 2017. Source: U.S. Geological Survey.

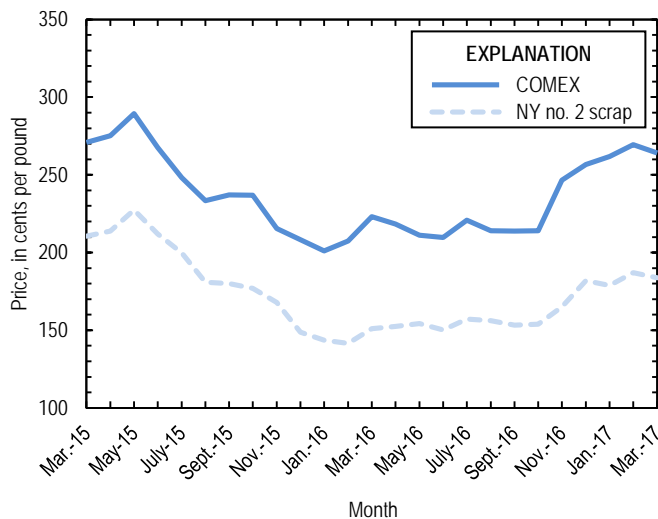


Figure 3. Monthly average COMEX copper price and New York no. 2 copper scrap price from March 2015 through March 2017. Sources: American Metal Market, Platts Metals Week.

refined copper stocks (Mining Journal, 2017). The average price of New York dealers' number 2 scrap in March 2017 was \$1.84 per pound, down slightly from the average price in February and 22% greater than the average price in March 2016 (table 12).

Industry News

PT Freeport Indonesia, a subsidiary of Freeport-McMoRan Inc., resumed production of copper concentrate at the Grasberg Mine on March 21 to supply the restarted Gresik smelter. The company's license to export copper concentrate from Indonesia expired on January 11, and Freeport had halted operations at Grasberg on February 10 after the storage warehouse reached capacity. Each day of lost production reduced global copper concentrate output by approximately 1,170 t (Freeport-McMoRan Inc., 2017b). At the end of March, negotiations to reach an export agreement with the Government of Indonesia were reported to be nearing a conclusion (Hotter, 2017; Teo, 2017).

Union employees at BHP Billiton Group's Escondida Mine in Chile returned to work on March 25, ending a 43-day strike. The workers invoked a legal provision that extended their most

recent contract for 18 months to ensure that the next round of negotiations will be governed by a new labor law (Mughal, 2017a). A worker strike at Freeport's Cerro Verde Mine in Peru began on March 10 and was resolved on March 30. The mine operated at 50% capacity during most of the strike after temporary workers were hired to mine in strategic areas (Mughal, 2017b). In 2016, the Escondida and Cerro Verde Mines produced approximately 1 million metric tons and 500,000 t, respectively, of copper in concentrates and together accounted for about 7% of global mine output (Freeport-McMoRan Inc., 2017a, p. 27; International Copper Study Group, 2017, p. 9; Rio Tinto plc, 2017, p. 221).

References Cited

- Freeport-McMoRan Inc., 2017a, Form 10-K—2016: U.S. Securities and Exchange Commission, 193 p.
- Freeport-McMoRan Inc., 2017b, Freeport-McMoRan updates status of PT Freeport Indonesia operations: Phoenix, AZ, Freeport-McMoRan Inc. press release, February 20. (Accessed May 8, 2017, at <http://investors.fcx.com/investor-center/news-releases/news-release-details/2017/Freeport-McMoRan-Updates-Status-of-PT-Freeport-Indonesia-Operations-2202017/default.aspx>.)
- Hotter, Andrea, 2017, Freeport halts Grasberg concentrate output: American Metal Market, February 14. (Accessed February 15, 2017, via <http://www.amm.com/>.)
- International Copper Study Group, 2017, Copper bulletin: Lisbon, Portugal, International Copper Study Group, v. 24, no. 5, May, 53 p.
- Mining Journal, 2017, Copper on the precipice—Barclays: London, United Kingdom, Aspermont Ltd., March 20. (Accessed March 22, 2017, via <http://www.mining-journal.com/>.)
- Mughal, Sarah, 2017a, Workers invoke legal provision to end strike at BHP Billiton's Escondida Mine: New York, NY, S&P Global Market Intelligence, March 30. (Accessed April 3, 2017, via <http://www.snl.com/>.)
- Mughal, Sarah, 2017b, Workers vote to end strike at Freeport's Cerro Verde after accepting wage deal: New York, NY, S&P Global Market Intelligence, March 30. (Accessed April 3, 2017, via <http://www.snl.com/>.)
- Rio Tinto plc, 2017, 2016 annual report: London, United Kingdom, Rio Tinto plc, 252 p.
- Teo, Vivian, 2017, Freeport seeks 'workable' Indonesia solution: American Metal Market, March 31. (Accessed April 3, 2017, via <http://www.amm.com/>.)

List services and web feed subscribers are the first to receive notification of USGS minerals information publications and data releases. For information on how to subscribe, go to <http://minerals.usgs.gov/minerals/>.

TABLE 1
SALIENT STATISTICS OF THE COPPER INDUSTRY IN THE UNITED STATES¹

(Metric tons, unless otherwise specified)

	Source table ²	2016 ^p	2017			
			January	February	March	January– March
Production:						
Primary:						
Mine, recoverable	(2)	1,430,000	110,000	99,000	114,000	324,000
Smelter, total	(3)	563,000	48,900	47,800 ^r	52,200	149,000
Refinery:						
Electrolytic, domestic and foreign	(4)	561,000	51,100	48,200	53,200	152,000
Electrowon	(4)	615,000	46,800	41,600	49,000	137,000
Total	(4)	1,180,000	97,900	89,800	102,000	290,000
Secondary recoverable copper:						
Refineries	(5)	46,300	3,240	4,090	3,240	10,600
Ingot makers ³	(5)	73,100	6,090	6,090	6,090	18,300
Brass and wire-rod mills	(5)	621,000	52,900	53,000	55,100	161,000
Foundries, etc. ³	(5)	47,200	3,940	3,940	3,940	11,800
Consumption:						
Apparent	(8)	1,880,000	154,000 ^r	147,000 ^r	172,000	473,000
Refined (reported)	(7)	1,780,000	148,000 ^r	150,000 ^r	149,000	446,000
Purchased copper-base scrap	(9)	917,000	80,400	80,500	82,700	244,000
Stocks at end of period:						
Total refined	(10)	235,000	252,000 ^r	252,000 ^r	260,000	260,000
Blister, etc.	(10)	14,200	11,700	13,200 ^r	13,500	13,500
Prices, U.S. producers cathode (cents per pound) ⁴	(11)	224.873	266.363	274.051	269.122	269.845
Imports: ⁵						
Ore and concentrate ⁶	(13)	105	--	1,590	9,050	10,600
Refined	(13)	708,000	72,600	59,600	84,800	217,000
Exports: ⁵						
Ore and concentrate ⁶	(14)	331,000	8,750	14,000	17,200	40,000
Refined	(14)	134,000	12,300	9,100	9,760	31,200

^pPreliminary. ^rRevised. -- Zero.

¹Data are rounded to no more than three significant digits, except prices; may not add to totals shown.

²Numbers in parentheses refer to the tables where these data are located.

³Monthly data estimated based on 2015 monthly average.

⁴Source: Platts Metals Week.

⁵Source: U.S. Census Bureau.

⁶Copper content.

TABLE 2
MINE PRODUCTION OF RECOVERABLE COPPER IN THE UNITED STATES¹

(Metric tons)

Period	Recoverable copper			Contained copper		
	Arizona	Others ²	Total	Electrowon	Concentrates ³	Total
2016: ^p						
March	81,600	40,100	122,000	51,400	73,000	124,000
April	81,200	39,500	121,000	49,700	73,900	124,000
May	83,500	39,400	123,000	51,700	74,000	126,000
June	79,800	37,200	117,000	50,700	69,000	120,000
July	80,200	35,100	115,000	54,000	63,700	118,000
August	86,400	40,300	127,000	52,700	76,900	130,000
September	79,400	36,400	116,000	51,400	67,000	118,000
October	81,800	43,700	125,000	53,300	74,900	128,000
November	74,200	38,200	112,000	48,700	66,100	115,000
December	76,600	35,300	112,000	47,900	66,600	115,000
January–December	969,000	461,000	1,430,000	615,000	848,000	1,460,000
2017:						
January	70,200	40,200	110,000	46,800	66,100	113,000
February	64,500	34,500	99,000	41,600	59,700	101,000
March	77,500	36,800	114,000	49,000	67,900	117,000
January–March	212,000	112,000	324,000	137,000	194,000	331,000

^pPreliminary.

¹Data are rounded to no more than three significant digits; may not add to totals shown.

²Includes production from Michigan, Missouri, Montana, Nevada, New Mexico, and Utah.

³Includes copper content of precipitates and other metal concentrates.

TABLE 3
COPPER PRODUCED AT SMELTERS IN
THE UNITED STATES^{1, 2}

(Metric tons, copper content)

Period	Anode production
2016: ^p	
March	41,400
April	47,300
May	51,900
June	45,400
July	33,100
August	47,700
September	54,000
October	51,900
November	43,300
December	55,000
January–December	563,000
2017:	
January	48,900
February	47,800 ^r
March	52,200
January–March	149,000

^pPreliminary. ^rRevised.

¹Includes blister and copper anode from primary or secondary sources.

²Data are rounded to no more than three significant digits; may not add to total shown.

TABLE 4
PRODUCTION OF REFINED COPPER, BY SOURCE AND METHOD OF RECOVERY¹

(Metric tons)

Period	Primary materials			Scrap	Total refined
	Electrolytically refined ²	Electrowon	Total		
2016: ^P					
March	53,300	51,400	105,000	4,900	110,000
April	47,100	49,700	96,800	3,200	100,000
May	48,200	51,700	99,900	3,180	103,000
June	43,600	50,700	94,200	3,260	97,500
July	43,200	54,000	97,200	3,280	100,000
August	45,200	52,700	97,900	3,300	101,000
September	48,200	51,400	99,500	3,810	103,000
October	48,800	53,300	102,000	3,410	105,000
November	46,600	48,700	95,300	3,220	98,500
December	42,900	47,900	90,800	3,330	94,100
January–December	561,000	615,000	1,180,000	46,300	1,220,000
2017:					
January	51,100	46,800	97,900	3,240	101,000
February	48,200	41,600	89,800	4,090	93,900
March	53,200	49,000	102,000	3,240	105,000
January–March	152,000	137,000	290,000	10,600	300,000

^PPreliminary.

¹Data are rounded to no more than three significant digits; may not add to totals shown.

²From domestic and foreign source materials.

TABLE 5
COPPER RECOVERABLE IN UNALLOYED AND ALLOYED FORM FROM PURCHASED COPPER-BASE SCRAP¹

(Metric tons, copper content)

Period	Refineries ²		Ingot makers ³		Brass and wire-rod mills		Foundries, etc. ³		Total ⁴
	New scrap	Old scrap	New scrap	Old scrap	New scrap	Old scrap	New scrap	Old scrap	
2016: ^P									
March	1,660	3,240	1,290	4,800	46,000	3,150	3,040	898	64,100
April	1,630	1,570	1,290	4,800	50,500	2,790	3,040	898	66,500
May	1,610	1,570	1,290	4,800	50,400	2,610	3,040	898	66,200
June	1,680	1,580	1,290	4,800	49,600	3,000	3,040	898	65,800
July	1,680	1,600	1,290	4,800	48,200	2,600	3,040	898	64,100
August	1,680	1,620	1,290	4,800	48,900	2,790	3,040	898	65,000
September	1,680	2,130	1,290	4,800	49,700	2,730	3,040	898	66,300
October	1,680	1,740	1,290	4,800	51,800	3,020	3,040	898	68,300
November	1,680	1,540	1,290	4,800	49,900	3,060	3,040	898	66,200
December	1,680	1,650	1,290	4,800	49,100	2,860	3,040	898	65,300
January–December	19,900	26,400	15,400	57,600	586,000	35,200	36,500	10,800	788,000
2017:									
January	1,680	1,560	1,290	4,800	49,500	3,360	3,040	898	66,100
February	1,680	2,420	1,290	4,800	50,100	2,940	3,040	898	67,100
March	1,680	1,560	1,290	4,800	52,000	3,110	3,040	898	68,400
January–March	5,030	5,540	3,860	14,400	152,000	9,410	9,110	2,690	202,000

^PPreliminary.

¹Data are rounded to no more than three significant digits; may not add to totals shown.

²Electrolytically refined and fire-refined from scrap based on source of material at smelter or refinery level.

³Monthly data and 2016 cumulative data estimated based on 2015 annual data.

⁴Does not include an estimate, based on reported 2015 data, of 3,050 tons per month from new scrap and 2,510 tons per month from old scrap, of copper recovered from scrap other than copper-base.

TABLE 6
PRODUCTION, SHIPMENTS, AND STOCKS OF BRASS AND WIRE-ROD SEMIFABRICATES¹

(Metric tons, gross weight)

Period	Production		Shipments		Stocks, end of period	
	Brass mills	Wire-rod mills	Brass mills	Wire-rod mills	Brass mills	Wire-rod mills
2016: ^p						
March	75,000	117,000	74,200	113,000	28,900	33,100
April	73,500	109,000	73,300	108,000	29,200	29,400
May	72,300	110,000	73,700	111,000	27,800	28,300
June	72,300	112,000	71,200	110,000	28,900	30,200
July	72,800	103,000	72,700	103,000	29,100	29,600
August	74,400	113,000	73,800	113,000	29,600	29,600
September	72,500	106,000	73,500	110,000	28,700	25,200
October	74,800	111,000	75,100	109,000	28,500	27,100
November	72,700	108,000	72,800	107,000	28,300	28,100
December	72,300	96,100	72,100	97,900	28,500	26,300
January–December	880,000	1,310,000	880,000	1,300,000	28,500	26,300
2017:						
January	73,500	111,000 ^r	72,900	113,000 ^r	29,100	23,600 ^r
February	72,800	102,000 ^r	73,100	97,100 ^r	28,900	28,600 ^r
March	73,200	110,000	73,400	113,000	26,600	26,000
January–March	220,000	323,000	219,000	323,000	26,600	26,000

^pPreliminary. ^rRevised.

¹Data are rounded to no more than three significant digits; may not add to totals shown.

TABLE 7
CONSUMPTION OF REFINED COPPER¹

(Metric tons)

Period	Brass mills	Wire-rod mills	Other plants ²	Total
2016: ^p				
March	35,400	116,000	5,820	157,000
April	34,900	107,000	5,820	148,000
May	34,400	108,000	5,820	149,000
June	35,500	110,000	5,820	151,000
July	35,500	100,000	5,820	142,000
August	35,600	111,000	5,820	153,000
September	35,400	103,000	5,820	145,000
October	35,400	110,000	5,820	151,000
November	34,400	110,000	5,820	150,000
December	33,800	93,000	5,820	133,000
January–December	421,000	1,290,000	69,800	1,780,000
2017:				
January	34,600	108,000 ^r	5,820	148,000 ^r
February	34,800	109,000 ^r	5,820	150,000 ^r
March	35,300	108,000	5,820	149,000
January–March	105,000	324,000	17,400	446,000

^pPreliminary. ^rRevised.

¹Data are rounded to no more than three significant digits; may not add to totals shown.

²Monthly and 2016 cumulative consumption data by ingot makers, chemical plants, foundries, and miscellaneous manufacturers is estimated based on 2015 annual data.

TABLE 8
U.S. APPARENT CONSUMPTION OF COPPER¹

(Metric tons)

Period	Refined copper production	Copper in old scrap ²	Refined general imports ³	Refined exports ³	Stock change during period	Apparent consumption
2016: ^P						
March	105,000	14,600	43,400	24,800	(27,900)	166,000
April	96,800	12,600	52,400	9,650	(15,500)	168,000
May	99,900	12,400	52,400	22,000	(8,810)	152,000
June	94,200	12,800	63,400	5,600	(16,400)	181,000
July	97,200	12,400	68,200	6,510	9,060	162,000
August	97,900	12,600	62,000	6,420	6,690	159,000
September	99,500	13,100	66,500	6,630	23,800	149,000
October	102,000	13,000	66,700	7,750	13,900	160,000
November	95,300	12,800	66,100	13,100	21,700	139,000
December	90,800	12,700	60,400	8,040	12,800	143,000
January–December	1,180,000	160,000	701,000	134,000	26,100	1,880,000
2017:						
January	97,900	13,100	72,400	12,300	17,000 ^r	154,000 ^r
February	89,800	13,600	53,500	9,100	506 ^r	147,000 ^r
March	102,000	12,900	73,800	9,760	7,510	172,000
January–March	290,000	39,600	200,000	31,200	25,000	473,000

^PPreliminary. ^rRevised.

¹Data are rounded to no more than three significant digits; may not add to totals shown.

²Includes reported monthly production of copper from old scrap of copper-base, an estimate for annual reporters, and a monthly average of copper from non-copper-base materials based on 2015 data.

³Source: U.S. Census Bureau.

TABLE 9
CONSUMPTION OF PURCHASED COPPER-BASE SCRAP¹

(Metric tons, gross weight)

Period	Smelters and refineries		Ingot makers ²		Brass and wire-rod mills ³		Foundries, etc. ²		Total scrap used
	New scrap	Old scrap	New scrap	Old scrap	New scrap	Old scrap	New scrap	Old scrap	
2016: ^P									
March	1,710	2,830	2,890	5,460	53,900	3,230	3,660	992	74,600
April	1,680	1,570	2,890	5,460	58,400	2,880	3,660	992	77,600
May	1,660	1,570	2,890	5,460	58,400	2,690	3,660	992	77,300
June	1,730	1,590	2,890	5,460	57,500	3,090	3,660	992	76,900
July	1,730	1,590	2,890	5,460	56,200	2,670	3,660	992	75,100
August	1,730	1,590	2,890	5,460	56,900	2,870	3,660	992	76,000
September	1,730	1,590	2,890	5,460	57,600	2,800	3,660	992	76,700
October	1,730	1,590	2,890	5,460	59,800	3,120	3,660	992	79,200
November	1,730	1,590	2,890	5,460	58,000	3,250	3,660	992	77,500
December	1,730	1,590	2,890	5,460	57,100	2,990	3,660	992	76,400
January–December	20,500	22,400	34,700	65,500	681,000	36,400	43,900	11,900	917,000
2017:									
January	1,820	4,630	2,890	5,460	57,500	3,490	3,660	992	80,400
February	1,820	4,630	2,890	5,460	58,000	3,040	3,660	992	80,500
March	1,820	4,630	2,890	5,460	60,100	3,240	3,660	992	82,700
January–March	5,470	13,900	8,670	16,400	176,000	9,770	11,000	2,980	244,000

^PPreliminary.

¹Data are rounded to no more than three significant digits; may not add to totals shown.

²Monthly data estimated from 2015 annual data.

³Consumption at brass and wire-rod mills assumed equal to receipts.

TABLE 10
COPPER STOCKS AT END OF PERIOD¹

(Metric tons)

Period	Crude copper ²	Refined copper					LME ⁵	Total refined
		Refineries ³	Wire-rod mills ³	Brass mills ³	Other ⁴	Comex		
2016: ^p								
March	13,600	7,900	28,700	7,460	5,730	65,300	72,400	187,000
April	12,400	3,200	41,600	7,950	5,730	59,400	54,100	172,000
May	15,500	3,950	40,100	8,670	5,730	55,400	49,300	163,000
June	18,700	2,820	37,300	7,680	5,730	56,600	36,600	147,000
July	13,500	3,040	41,200	7,940	5,730	59,300	38,600	156,000
August	12,500	5,660	38,500	7,930	5,730	61,000	43,600	162,000
September	12,600	4,230	39,500	7,650	5,730	64,000	65,200	186,000
October	14,700	3,230	40,200	7,270	5,730	65,300	78,400	200,000
November	13,800	4,290	41,800	7,070	5,730	70,600	92,400	222,000
December	14,200	3,750	38,900	7,380	5,730	80,100	98,900	235,000
2017:								
January	11,700	9,250	40,900 ^r	7,430	5,730	92,600	95,700	252,000 ^r
February	13,200 ^r	8,010	37,400 ^r	7,330	5,730	114,000	79,600	252,000 ^r
March	13,500	3,860	45,800	7,050	5,730	130,000	67,200	260,000

^pPreliminary. ^rRevised.

¹Data are rounded to no more than three significant digits; may not add to totals shown.

²Copper content of blister and anode.

³Stocks of refined copper as reported; no estimates are made for nonrespondents.

⁴Monthly estimates based on reported and 2015 annual data, comprising stocks at ingot makers, chemical plants, foundries, and miscellaneous manufacturers.

⁵London Metal Exchange Ltd., U.S. warehouses.

TABLE 11
AVERAGE PRICE OF COPPER IN THE UNITED STATES
AND ON THE LONDON METAL EXCHANGE

(Cents per pound)

Period	U.S. producers cathode ¹	Comex first position ²	LME cash price Grade A
2016:			
March	228.409	223.159	224.394
April	223.726	218.288	220.017
May	216.831	211.143	213.544
June	215.520	209.770	210.025
July	226.296	220.733	220.235
August	219.284	214.096	215.811
September	218.752	213.752	213.496
October	218.885	214.010	214.629
November	251.388	246.638	246.878
December	261.183	256.683	256.997
Year	224.873	219.727	220.571
2017:			
January	266.363	261.863	260.225
February	274.051	269.426	269.484
March	269.122	264.122	264.040
January–March	269.845	265.137	264.583

¹Sum of "Comex high grade first position" and "NY Dealer Premium Cathode."

²Listed as "Comex high grade first position."

Source: Platts Metals Week.

TABLE 12
NEW YORK AVERAGE BUYING PRICES FOR COPPER SCRAP

(Cents per pound)

Month	Brass mills No. 1 scrap	Refiners No. 2 scrap	Dealers (New York)	
			No. 2 scrap	Red brass turnings and borings
2016:				
March	222.17	202.72	151.02	128.70
April	217.98	199.00	152.50	130.00
May	210.83	192.43	154.26	132.38
June	210.30	191.68	150.27	130.14
July	221.00	201.70	157.15	134.10
August	213.54	192.26	156.20	133.35
September	213.43	191.88	153.21	131.57
October	212.71	190.05	153.88	131.95
November	241.32	218.05	165.00	137.50
December	248.38	224.48	181.98	146.00
Year	218.01	197.52	155.05	132.17
2017:				
January	254.78	228.38	178.80	144.65
February	261.50	234.00	186.97	148.00
March	256.70	228.57	183.67	146.30
January–March	257.66	230.32	183.15	146.32

Source: American Metal Market.

TABLE 13
U.S. IMPORTS FOR CONSUMPTION OF COPPER (UNMANUFACTURED), BY CLASS¹

(Metric tons, copper content)

Country or territory	Ore and concentrate			Matte, ash, and precipitates			Blister and anodes			Refined		
	2017			2017			2017			2017		
	2016	January–		2016	January–		2016	January–		2016	January–	
		March	March		March	March		March	March		March	March
Belgium	--	--	--	27	--	25	--	--	--	--	--	--
Canada	72	--	--	355	26	49	2	--	--	193,000	16,000	49,100
Chile	--	--	--	--	--	--	--	--	--	354,000	59,200	138,000
China	--	--	--	--	--	--	(2)	--	--	77	4	8
Congo (Kinshasa)	--	--	--	--	--	--	--	--	--	21,100	694	2,990
Finland	--	--	--	--	--	--	175	34	68	110	1	1
Germany	--	--	--	--	--	--	(2)	--	--	1,830	142	418
India	3	--	--	--	--	--	--	--	--	1,210	224	224
Japan	--	--	--	109	--	(2)	3	(2)	(2)	4,090	520	1,140
Mexico	3	9,050	10,600	41	10	10	--	--	--	102,000	6,150	21,400
Netherlands	--	--	--	69	32	32	(2)	2	2	(2)	--	(2)
Peru	--	--	--	--	--	--	--	--	--	24,800	1,630	2,450
Other	27	--	--	205	145	156	95	18	29	4,680	338	892
Total	105	9,050	10,600	806	213	273	274	54	99	708,000	84,800	217,000

-- Zero.

¹Data are rounded to no more than three significant digits; may not add to totals shown.

²Less than ½ unit.

Source: U.S. Census Bureau.

TABLE 14
U.S. EXPORTS OF COPPER (UNMANUFACTURED), BY CLASS¹

(Metric tons, copper content)

Country or territory	Ore and concentrate			Matte, ash, and precipitates			Blister and anodes			Refined		
	2017			2017			2017			2017		
	January–			January–			January–			January–		
	2016	March	March	2016	March	March	2016	March	March	2016	March	March
Belgium	(2)	--	--	5,700	783	2,060	679	39	121	--	--	(2)
Canada	25,800	2,280	7,480	12,300	1,090	2,330	2,050	243	877	32,300	2,220	6,580
China	57,800	2,320	9,270	52	--	--	485	--	22	32,600	1,960	4,990
Germany	--	--	--	204	56	248	517	--	20	21	--	--
Hong Kong	--	--	--	36	--	--	1,070	139	342	--	--	--
Italy	--	--	--	--	--	--	356	48	71	240	1	2
Japan	20,400	--	9	180	17	50	453	--	14	157	(2)	1
Korea, Republic of	138	--	32	352	--	36	1,420	308	635	85	87	95
Mexico	226,000	12,600	23,200	--	--	--	99	5	62	67,700	5,470	19,500
Singapore	--	--	--	--	--	--	42	--	--	13	4	4
Spain	--	--	--	40	--	--	266	--	40	4	(2)	1
Switzerland	--	--	--	--	--	--	24	6	7	5	--	--
Taiwan	--	--	--	359	--	54	60	--	40	62	--	5
Other	853	15	36	884	--	(2)	1,970	50	374	518	21	48
Total	331,000	17,200	40,000	20,100	1,940	4,780	9,490	838	2,630	134,000	9,760	31,200

-- Zero.

¹Data are rounded to no more than three significant digits; may not add to totals shown.

²Less than ½ unit.

Source: U.S. Census Bureau.

TABLE 15
U.S. COPPER SCRAP IMPORTS¹

(Metric tons, gross weight)

Country or territory	Unalloyed			Alloyed		
	2017			2017		
	2016	March	January– March	2016	March	January– March
Canada	13,200	1,550	5,240	52,100	6,760	18,500
Chile	41	--	--	211	40	115
Colombia	259	124	144	1,180	86	294
Costa Rica	344	52	121	1,030	87	285
Guatemala	--	8	29	326	37	61
Honduras	102	13	13	357	39	87
Mexico	12,900	793	2,230	34,400	3,200	9,220
Nicaragua	--	--	--	264	31	31
Other	2,170	295	777	6,180	1,560	2,440
Total	29,100	2,830	8,550	96,100	11,800	31,000

-- Zero.

¹Data are rounded to no more than three significant digits; may not add to totals shown.

Source: U.S. Census Bureau.

TABLE 16
U.S. COPPER SCRAP EXPORTS¹

(Metric tons, gross weight)

Country or territory	Unalloyed							Alloyed				
	2017							2017				
	No. 1		No. 2		Other			Segregated		Unsegregated		
	January–		January–		January–			January–		January–		
	2016	March	March	March	March	March	March	2016	March	March	March	March
Belgium	9,030	153	621	134	454	158	693	8,370	191	366	354	1,050
Canada	23,400	--	--	--	--	4,580	11,500	51,200	--	--	7,690	16,800
China	283,000	11,100	28,900	8,000	22,600	11,200	33,400	377,000	11,600	29,900	21,700	61,600
Germany	24,900	2,110	4,030	177	675	96	290	8,150	--	66	670	1,840
Hong Kong	6,570	198	466	199	344	571	802	17,100	146	418	1,520	3,930
India	1,580	78	177	8	58	115	384	23,000	1,710	3,250	40	451
Japan	6,520	102	243	888	1,350	494	1,120	8,730	60	197	1,090	2,550
Korea, Republic of	17,100	1,160	2,320	43	189	293	996	10,300	345	982	369	996
Mexico	1,660	242	619	--	--	41	49	951	8	18	24	51
Netherlands	12,100	388	960	--	60	313	1,020	1,170	--	--	--	18
Spain	182	--	12	39	48	--	20	7,770	79	328	529	952
Taiwan	8,260	331	1,320	116	281	20	81	1,740	20	189	113	299
Thailand	121	--	--	--	--	(2)	3	1,050	--	40	--	--
Other	14,900	1,340	4,370	136	678	82	148	16,900	494	933	720	3,000
Total	410,000	17,200	44,000	9,740	26,800	18,000	50,500	534,000	14,600	36,700	34,900	93,600

-- Zero.

¹Data are rounded to no more than three significant digits; may not add to totals shown.

²Less than ½ unit.

Source: U.S. Census Bureau.