

Mineral Industry Surveys

For information, contact:

Daniel M. Flanagan, Copper Commodity Specialist
National Minerals Information Center
U.S. Geological Survey
989 National Center
Reston, VA 20192
Telephone: (703) 648-7726, Fax: (703) 648-7757
Email: dflanagan@usgs.gov

Samir Hakim (Data)
Telephone: (703) 648-7955
Fax: (703) 648-7975
Email: shakim@usgs.gov

Internet: <http://minerals.usgs.gov/minerals/>

COPPER IN JANUARY 2017

In January 2017, domestic mine production of recoverable copper was 109,000 metric tons (t), a slight decrease from 112,000 t in December and 10% less than that in January 2016. Refinery production was 101,000 t, an increase of 7% from 94,100 t in December and 8% less than that in January 2016 (fig. 1; tables 2, 4).

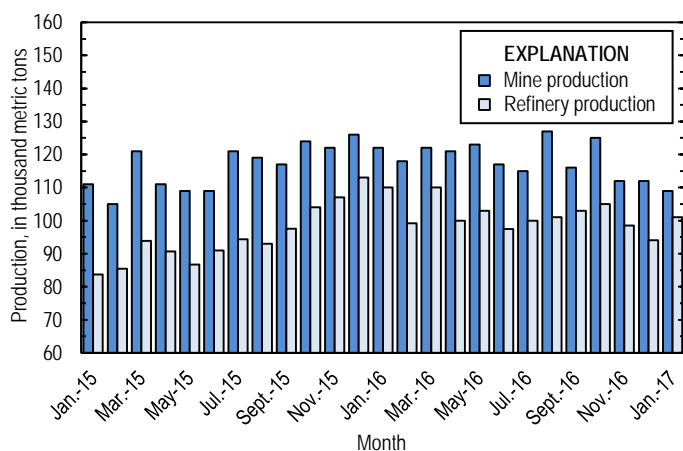


Figure 1. Monthly domestic copper mine production (recoverable) and refinery production from January 2015 through January 2017. Source: U.S. Geological Survey.

U.S. electrolytic refinery production in January 2017 was 51,100 t, an increase of 19% compared with that in December and unchanged from that in January 2016. Electrowon production was 46,800 t, a slight decline relative to that in December and 14% less than that in January 2016. Smelter production was 48,900 t, 11% less than that in December and 7% greater than that in January 2016 (tables 3, 4).

Stocks

Refined copper stocks in the United States at the end of January 2017 totaled 250,000 t and rose by 7% relative to those at the end of December owing primarily to an increase of 16% in COMEX stocks. Total refined stocks were 14% greater than those at the end of January 2016 (fig. 2, table 10).

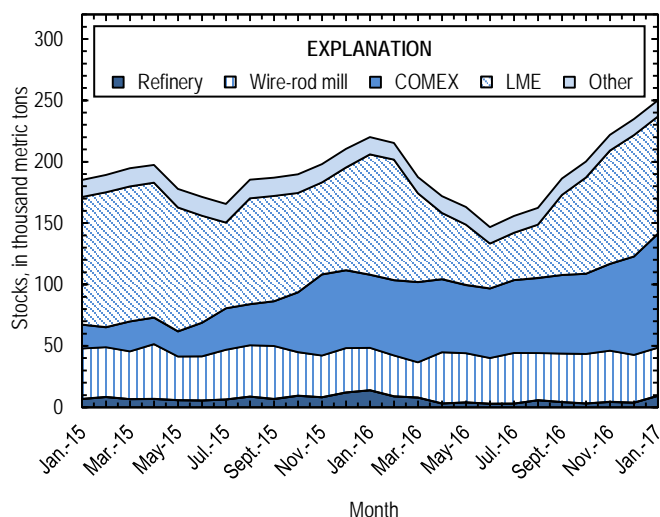


Figure 2. Monthly U.S. refined copper stocks, by type, from January 2015 through January 2017. Sources: American Metal Market, London Metal Exchange Ltd., and U.S. Geological Survey.

Prices

The average January 2017 COMEX spot copper price was \$2.62 per pound, the highest monthly average since June 2015. The January price increased slightly from \$2.57 per pound in December and was 30% greater than that in January 2016 (table 11). The average price for New York dealers' number 2 scrap was \$1.79 per pound, down slightly from the average price in December and up by 25% from the average price in January of the prior year (table 12).

List services and web feed subscribers are the first to receive notification of USGS minerals information publications and data releases. For information on how to subscribe, go to <http://minerals.usgs.gov/minerals/>.

TABLE 1
SALIENT STATISTICS OF THE COPPER INDUSTRY IN THE UNITED STATES¹

(Metric tons, unless otherwise specified)

	Source table ²	2016				2017 January
		2015 ^p	November	December	January– December	
Production:						
Primary:						
Mine, recoverable	(2)	1,410,000	112,000	112,000 ^r	1,430,000	109,000
Smelter, total	(3)	527,000	43,300	55,000	563,000	48,900
Refinery:						
Electrolytic, domestic and foreign	(4)	503,000	46,600	42,900	561,000	51,100
Electrowon	(4)	588,000	48,700	47,900	615,000	46,800
Total	(4)	1,090,000	95,300	90,800	1,180,000	97,900
Secondary recoverable copper:						
Refineries	(5)	48,800	3,220	3,330	46,300	3,240
Ingot makers ³	(5)	56,300	6,090 ^r	6,090 ^r	73,100 ^r	6,090
Brass and wire-rod mills	(5)	570,000	52,900	52,000	621,000	52,900
Foundries, etc. ³	(5)	50,200	3,940 ^r	3,940 ^r	47,200 ^r	3,940
Consumption:						
Apparent	(8)	1,810,000	139,000 ^r	143,000 ^r	1,880,000 ^r	156,000
Refined (reported)	(7)	1,800,000	150,000 ^r	133,000 ^r	1,780,000 ^r	147,000
Purchased copper-base scrap	(9)	875,000	77,500 ^r	76,400 ^r	917,000 ^r	80,400
Stocks at end of period:						
Total refined	(10)	210,000	222,000 ^r	235,000 ^r	235,000 ^r	250,000
Blister, etc.	(10)	13,900	13,800	14,200	14,200	11,700
Prices, U.S. producers cathode (cents per pound) ⁴	(11)	256.150	251.388	261.183	224.873	266.363
Imports: ⁵						
Ore and concentrate ⁶	(13)	295	--	--	105	--
Refined	(13)	686,000	67,100	72,000	708,000	72,600
Exports: ⁵						
Ore and concentrate ⁶	(14)	392,000	22,000	21,100	331,000	8,750
Refined	(14)	86,200	13,100	8,040	134,000	12,300

^pPreliminary. ^rRevised. -- Zero.

¹Data are rounded to no more than three significant digits, except prices; may not add to totals shown.

²Numbers in parentheses refer to the tables where these data are located.

³Monthly data estimated based on 2015 monthly average.

⁴Source: Platts Metals Week.

⁵Source: U.S. Census Bureau.

⁶Copper content.

TABLE 2
MINE PRODUCTION OF RECOVERABLE COPPER IN THE UNITED STATES¹

(Metric tons)

Period	Recoverable copper			Contained copper		
	Arizona	Others ²	Total	Electrowon	Concentrates ³	Total
2016: ^p						
January	84,500	37,100	122,000	54,500	70,400	125,000
February	79,400	38,900	118,000	48,500	72,800	121,000
March	81,600	40,100	122,000	51,400	73,000	124,000
April	81,200	39,500	121,000	49,700	73,900	124,000
May	83,500	39,400	123,000	51,700	74,000	126,000
June	79,800	37,200	117,000	50,700	69,000	120,000
July	80,200	35,100	115,000	54,000	63,700	118,000
August	86,400	40,300	127,000	52,700	76,900	130,000
September	79,400	36,400	116,000	51,400	67,000	118,000
October	81,800	43,700	125,000	53,300	74,900	128,000
November	74,200	38,200	112,000	48,700	66,100	115,000
December	76,600 ^r	35,300	112,000 ^r	47,900	66,600 ^r	115,000 ^r
January–December	969,000 ^r	461,000	1,430,000	615,000	848,000	1,460,000
2017, January	70,200	39,200	109,000	46,800	65,000	112,000

^pPreliminary. ^rRevised.

¹Data are rounded to no more than three significant digits; may not add to totals shown.

²Includes production from Michigan, Missouri, Montana, Nevada, New Mexico, and Utah.

³Includes copper content of precipitates and other metal concentrates.

TABLE 3
COPPER PRODUCED AT SMELTERS IN
THE UNITED STATES^{1, 2}

(Metric tons, copper content)

Period	Anode production
2016: ^p	
January	45,600
February	46,100
March	41,400
April	47,300
May	51,900
June	45,400
July	33,100
August	47,700
September	54,000
October	51,900
November	43,300
December	55,000
January–December	563,000
2017, January	48,900

^pPreliminary.

¹Includes blister and copper anode from primary or secondary sources.

²Data are rounded to no more than three significant digits; may not add to total shown.

TABLE 4
PRODUCTION OF REFINED COPPER, BY SOURCE AND METHOD OF RECOVERY¹

(Metric tons)

Period	Primary materials			Scrap	Total refined
	Electrolytically refined ²	Electrowon	Total		
2016: ^p					
January	51,100	54,500	106,000	4,250	110,000
February	43,500	48,500	92,000	7,190	99,200
March	53,300	51,400	105,000	4,900	110,000
April	47,100	49,700	96,800	3,200	100,000
May	48,200	51,700	99,900	3,180	103,000
June	43,600	50,700	94,200	3,260	97,500
July	43,200	54,000	97,200	3,280	100,000
August	45,200	52,700	97,900	3,300	101,000
September	48,200	51,400	99,500	3,810	103,000
October	48,800	53,300	102,000	3,410	105,000
November	46,600	48,700	95,300	3,220	98,500
December	42,900	47,900	90,800	3,330	94,100
January–December	561,000	615,000	1,180,000	46,300	1,220,000
2017, January	51,100	46,800	97,900	3,240	101,000

^pPreliminary.

¹Data are rounded to no more than three significant digits; may not add to totals shown.

²From domestic and foreign source materials.

TABLE 5
COPPER RECOVERABLE IN UNALLOYED AND ALLOYED FORM FROM PURCHASED COPPER-BASE SCRAP¹

(Metric tons, copper content)

Period	Refineries ²		Ingot makers ³		Brass and wire-rod mills		Foundries, etc. ³		Total ⁴
	New scrap	Old scrap	New scrap	Old scrap	New scrap	Old scrap	New scrap	Old scrap	
2016: ^p									
January	1,640	2,620	1,290 ^r	4,800 ^r	46,300	3,430	3,040 ^r	898 ^r	64,000 ^r
February	1,640	5,550	1,290 ^r	4,800 ^r	45,700	3,190	3,040 ^r	898 ^r	66,100 ^r
March	1,660	3,240	1,290 ^r	4,800 ^r	46,000	3,150	3,040 ^r	898 ^r	64,100 ^r
April	1,630	1,570	1,290 ^r	4,800 ^r	50,500	2,790	3,040 ^r	898 ^r	66,500 ^r
May	1,610	1,570	1,290 ^r	4,800 ^r	50,400	2,610	3,040 ^r	898 ^r	66,200 ^r
June	1,680	1,580	1,290 ^r	4,800 ^r	49,600	3,000	3,040 ^r	898 ^r	65,800 ^r
July	1,680	1,600	1,290 ^r	4,800 ^r	48,200	2,600	3,040 ^r	898 ^r	64,100 ^r
August	1,680	1,620	1,290 ^r	4,800 ^r	48,900	2,790	3,040 ^r	898 ^r	65,000 ^r
September	1,680	2,130	1,290 ^r	4,800 ^r	49,700	2,730	3,040 ^r	898 ^r	66,300 ^r
October	1,680	1,740	1,290 ^r	4,800 ^r	51,800	3,020	3,040 ^r	898 ^r	68,300 ^r
November	1,680	1,540	1,290 ^r	4,800 ^r	49,900	3,060	3,040 ^r	898 ^r	66,200 ^r
December	1,680	1,650	1,290 ^r	4,800 ^r	49,100	2,860	3,040 ^r	898 ^r	65,300 ^r
January–December	19,900	26,400	15,400 ^r	57,600 ^r	586,000	35,200	36,500 ^r	10,800 ^r	788,000 ^r
2017, January	1,680	1,560	1,290	4,800	49,500	3,360	3,040	898	66,100

^pPreliminary. ^rRevised.

¹Data are rounded to no more than three significant digits; may not add to totals shown.

²Electrolytically refined and fire-refined from scrap based on source of material at smelter or refinery level.

³Monthly data and 2016 cumulative data estimated based on 2015 annual data.

⁴Does not include an estimate, based on reported 2015 data, of 3,050 tons per month from new scrap and 2,510 tons per month from old scrap, of copper recovered from scrap other than copper-base.

TABLE 6
PRODUCTION, SHIPMENTS, AND STOCKS OF BRASS AND WIRE-ROD SEMIFABRICATES¹

(Metric tons, gross weight)

Period	Production		Shipments		Stocks, end of period	
	Brass mills	Wire-rod mills	Brass mills	Wire-rod mills	Brass mills	Wire-rod mills
2016: ^p						
January	73,600	112,000	73,400	110,000	28,600	27,600
February	73,600	109,000	73,900	108,000	28,200	28,900
March	75,000	117,000	74,200	113,000	28,900	33,100
April	73,500	109,000	73,300	108,000	29,200	29,400
May	72,300	110,000	73,700	111,000	27,800	28,300
June	72,300	112,000	71,200	110,000	28,900	30,200
July	72,800	103,000	72,700	103,000	29,100	29,600
August	74,400	113,000	73,800	113,000	29,600	29,600
September	72,500	106,000	73,500	110,000	28,700	25,200
October	74,800	111,000	75,100	109,000	28,500	27,100
November	72,700	108,000	72,800	107,000	28,300	28,100
December	72,300	96,100	72,100	97,900	28,500	26,300
January–December	880,000	1,310,000	880,000	1,300,000	28,500	26,300
2017, January	73,500	109,000	72,900	111,000	29,100	24,000

^pPreliminary.

¹Data are rounded to no more than three significant digits; may not add to totals shown.

TABLE 7
CONSUMPTION OF REFINED COPPER¹

(Metric tons)

Period and item	Brass mills	Wire-rod mills	Other plants ²	Total
2016: ^p				
January	34,800	110,000	5,820 ^r	150,000 ^r
February	35,700	107,000	5,820 ^r	149,000 ^r
March	35,400	116,000	5,820 ^r	157,000 ^r
April	34,900	107,000	5,820 ^r	148,000 ^r
May	34,400	108,000	5,820 ^r	149,000 ^r
June	35,500	110,000	5,820 ^r	151,000 ^r
July	35,500	100,000	5,820 ^r	142,000 ^r
August	35,600	111,000	5,820 ^r	153,000 ^r
September	35,400	103,000	5,820 ^r	145,000 ^r
October	35,400	110,000	5,820 ^r	151,000 ^r
November	34,400	110,000	5,820 ^r	150,000 ^r
December	33,800	93,000	5,820 ^r	133,000 ^r
January–December	421,000	1,290,000	69,800 ^r	1,780,000 ^r
2017, January	34,600	106,000	5,820	147,000

^pPreliminary. ^rRevised.

¹Data are rounded to no more than three significant digits; may not add to totals shown.

²Monthly and 2016 cumulative consumption data by ingot makers, chemical plants, foundries, and miscellaneous manufacturers is estimated based on 2015 annual data.

TABLE 8
U.S. APPARENT CONSUMPTION OF COPPER¹

(Metric tons)

Period	Refined copper production	Copper in old scrap ²	Refined general imports ³	Refined exports ³	Stock change during period	Apparent consumption
2016: ^p						
January	106,000	14,300 ^r	56,000	6,390	11,500	158,000
February	91,800	17,000 ^r	43,800	16,800	(4,810)	141,000
March	105,000	14,600 ^r	43,400	24,800	(27,900)	166,000
April	96,700	12,600 ^r	52,400	9,650	(15,500)	167,000
May	99,900	12,400 ^r	52,400	22,000	(8,810)	152,000
June	94,200	12,800 ^r	63,400	5,600	(16,400)	181,000
July	97,200	12,400 ^r	68,200	6,510	9,060	162,000
August	97,900	12,600 ^r	62,000	6,420	6,690	159,000
September	99,600	13,100 ^r	66,500	6,630	23,800	149,000
October	102,000	13,000 ^r	66,700	7,750	13,900	160,000
November	95,300	12,800 ^r	66,100	13,100	21,700	139,000
December	90,800	12,700 ^r	60,400	8,040	12,800	143,000
January–December	1,180,000	160,000 ^r	701,000	134,000	26,100	1,880,000
2017, January	97,900	13,100	72,400	12,300	15,300	156,000

^pPreliminary. ^rRevised.

¹Data are rounded to no more than three significant digits; may not add to totals shown.

²Includes reported monthly production of copper from old scrap of copper-base, an estimate for annual reporters, and a monthly average of copper from non-copper-base materials based on 2015 data.

³Source: U.S. Census Bureau.

TABLE 9
CONSUMPTION OF PURCHASED COPPER-BASE SCRAP¹

(Metric tons, gross weight)

Period	Smelters and refineries		Ingot makers ²		Brass and wire-rod mills ³		Foundries, etc. ²		Total scrap used
	New scrap	Old scrap	New scrap	Old scrap	New scrap	Old scrap	New scrap	Old scrap	
2016: ^p									
January	1,690	2,680	2,890 ^r	5,460 ^r	54,200	3,520	3,660 ^r	992 ^r	75,100 ^r
February	1,690	2,680	2,890 ^r	5,460 ^r	53,600	3,290	3,660 ^r	992 ^r	74,200 ^r
March	1,710	2,830	2,890 ^r	5,460 ^r	53,900	3,230	3,660 ^r	992 ^r	74,600 ^r
April	1,680	1,570	2,890 ^r	5,460 ^r	58,400	2,880	3,660 ^r	992 ^r	77,600 ^r
May	1,660	1,570	2,890 ^r	5,460 ^r	58,400	2,690	3,660 ^r	992 ^r	77,300 ^r
June	1,730	1,590	2,890 ^r	5,460 ^r	57,500	3,090	3,660 ^r	992 ^r	76,900 ^r
July	1,730	1,590	2,890 ^r	5,460 ^r	56,200	2,670	3,660 ^r	992 ^r	75,100 ^r
August	1,730	1,590	2,890 ^r	5,460 ^r	56,900	2,870	3,660 ^r	992 ^r	76,000 ^r
September	1,730	1,590	2,890 ^r	5,460 ^r	57,600	2,800	3,660 ^r	992 ^r	76,700 ^r
October	1,730	1,590	2,890 ^r	5,460 ^r	59,800	3,120	3,660 ^r	992 ^r	79,200 ^r
November	1,730	1,590	2,890 ^r	5,460 ^r	58,000	3,250	3,660 ^r	992 ^r	77,500 ^r
December	1,730	1,590	2,890 ^r	5,460 ^r	57,100	2,990	3,660 ^r	992 ^r	76,400 ^r
January–December	20,500	22,400	34,700 ^r	65,500 ^r	681,000	36,400	43,900 ^r	11,900 ^r	917,000 ^r
2017, January	1,820	4,630	2,890	5,460	57,500	3,490	3,660	992	80,400

^pPreliminary. ^rRevised.

¹Data are rounded to no more than three significant digits; may not add to totals shown.

²Monthly data estimated from 2015 annual data.

³Consumption at brass and wire-rod mills assumed equal to receipts.

TABLE 10
COPPER STOCKS AT END OF PERIOD¹

(Metric tons)

Period	Crude copper ²	Refined copper					Total refined
		Refineries ³	Wire-rod mills ³	Brass mills ³	Other ⁴	Comex	
2016: ^p							
January	13,700	13,800	34,600	8,340	5,730 ^r	59,500	220,000 ^r
February	14,500	8,820	33,400	7,840	5,730 ^r	61,200	215,000 ^r
March	13,600	7,900	28,700	7,460	5,730 ^r	65,300	187,000 ^r
April	12,400	3,200	41,600	7,950	5,730 ^r	59,400	172,000 ^r
May	15,500	3,950	40,100	8,670	5,730 ^r	55,400	163,000 ^r
June	18,700	2,820	37,300	7,680	5,730 ^r	56,600	147,000 ^r
July	13,500	3,040	41,200	7,940	5,730 ^r	59,300	156,000 ^r
August	12,500	5,660	38,500	7,930	5,730 ^r	61,000	162,000 ^r
September	12,600	4,230	39,500	7,650	5,730 ^r	64,000	186,000 ^r
October	14,700	3,230	40,200	7,270	5,730 ^r	65,300	200,000 ^r
November	13,800	4,290	41,800	7,070	5,730 ^r	70,600	222,000 ^r
December	14,200	3,750	38,900	7,380	5,730 ^r	80,100	235,000 ^r
2017, January	11,700	9,250	39,300	7,430	5,730	92,600	250,000

^pPreliminary. ^rRevised.

¹Data are rounded to no more than three significant digits; may not add to totals shown.

²Copper content of blister and anode.

³Stocks of refined copper as reported; no estimates are made for nonrespondents.

⁴Monthly estimates based on reported and 2015 annual data, comprising stocks at ingot makers, chemical plants, foundries, and miscellaneous manufacturers.

⁵London Metal Exchange Ltd., U.S. warehouses.

TABLE 11
AVERAGE PRICE OF COPPER IN THE UNITED STATES
AND ON THE LONDON METAL EXCHANGE

(Cents per pound)

Period	U.S. producers cathode ¹	Comex first position ²	LME cash price Grade A
2016:			
January	205.695	200.945	202.406
February	212.505	207.505	208.424
March	228.409	223.159	224.394
April	223.726	218.288	220.017
May	216.831	211.143	213.544
June	215.520	209.770	210.025
July	226.296	220.733	220.235
August	219.284	214.096	215.811
September	218.752	213.752	213.496
October	218.885	214.010	214.629
November	251.388	246.638	246.878
December	261.183	256.683	256.997
Year	224.873	219.727	220.571
2017, January	266.363	261.863	260.225

¹Sum of "Comex high grade first position" and "NY Dealer Premium Cathode."

²Listed as "Comex high grade first position."

Source: Platts Metals Week.

TABLE 12
NEW YORK AVERAGE BUYING PRICES FOR COPPER SCRAP

(Cents per pound)

Month	Brass mills No. 1 scrap	Refiners No. 2 scrap	Dealers (New York)	
			No. 2 Scrap	Red brass turnings and borings
2016:				
January	198.61	178.84	143.61	125.37
February	205.90	187.18	141.50	125.00
March	222.17	202.72	151.02	128.70
April	217.98	199.00	152.50	130.00
May	210.83	192.43	154.26	132.38
June	210.30	191.68	150.27	130.14
July	221.00	201.70	157.15	134.10
August	213.54	192.26	156.20	133.35
September	213.43	191.88	153.21	131.57
October	212.71	190.05	153.88	131.95
November	241.32	218.05	165.00	137.50
December	248.38	224.48	181.98	146.00
Year	218.01	197.52	155.05	132.17
2017, January	254.78	228.38	178.80	144.65

Source: American Metal Market.

TABLE 13
U.S. IMPORTS FOR CONSUMPTION OF COPPER (UNMANUFACTURED), BY CLASS¹

(Metric tons, copper content)

Country or territory	Ore and concentrate		latte, ash, and precipitat		Blister and anodes		Refined	
	2016	2017 January	2016	2017 January	2016	2017 January	2016	2017 January
Belgium	--	--	27	25	--	--	--	--
Canada	72	--	355	1	2	--	193,000	18,100
Chile	--	--	--	--	--	--	354,000	42,600
China	--	--	--	--	(2)	--	77	--
Congo (Kinshasa)	--	--	--	--	--	--	21,100	2,300
Finland	--	--	--	--	175	(2)	110	--
Germany	--	--	--	--	(2)	--	1,830	146
India	3	--	--	--	--	--	1,210	--
Japan	--	--	109	--	3	--	4,090	228
Mexico	3	--	41	--	--	--	102,000	8,510
Netherlands	--	--	69	--	(2)	(2)	(2)	--
Peru	--	--	--	--	--	--	24,800	500
Other	27	--	205	11	95	10	4,680	240
Total	105	--	806	37	274	11	708,000	72,600

-- Zero.

¹Data are rounded to no more than three significant digits; may not add to totals shown.

²Less than ½ unit.

Source: U.S. Census Bureau.

TABLE 14
U.S. EXPORTS OF COPPER (UNMANUFACTURED), BY CLASS¹

(Metric tons, copper content)

Country or territory	Ore and concentrate		fatte, ash, and precipitate		Blister and anodes		Refined	
	2017		2017		2017		2017	
	2016	January	2016	January	2016	January	2016	January
Belgium	(2)	--	5,700	605	679	52	--	(2)
Canada	25,800	2,530	12,300	455	2,050	296	32,300	1,630
China	57,800	1,520	52	--	485	--	32,600	3,030
Germany	--	--	204	56	517	--	21	--
Hong Kong	--	--	36	--	1,070	79	--	--
Italy	--	--	--	--	356	22	240	1
Japan	20,400	--	180	--	453	--	157	(2)
Korea, Republic of	138	--	352	18	1,420	210	85	3
Mexico	226,000	4,690	--	--	99	9	67,700	7,680
Singapore	--	--	--	--	42	--	13	--
Spain	--	--	40	--	266	20	4	(2)
Switzerland	--	--	--	--	24	1	5	--
Taiwan	--	--	359	18	60	20	62	5
Other	855	11	884	--	1,970	253	518	4
Total	331,000	8,750	20,100	1,150	9,490	962	134,000	12,300

-- Zero.

¹Data are rounded to no more than three significant digits; may not add to totals shown.

²Less than ½ unit.

Source: U.S. Census Bureau.

TABLE 15
U.S. COPPER SCRAP IMPORTS¹

(Metric tons, gross weight)

Country or territory	Unalloyed		Alloyed	
	2017		2017	
	2016	January	2016	January
Canada	13,200	1,770	52,100	6,280
Chile	41	--	211	17
Colombia	259	--	1,180	128
Costa Rica	344	24	1,030	61
Guatemala	--	--	326	17
Honduras	102	--	357	18
Mexico	12,900	749	34,400	3,120
Nicaragua	--	--	264	--
Other	2,170	313	6,180	544
Total	29,100	2,860	96,100	10,200

-- Zero.

¹Data are rounded to no more than three significant digits; may not add to totals shown.

Source: U.S. Census Bureau.

TABLE 16
U.S. COPPER SCRAP EXPORTS¹

(Metric tons, gross weight)

Country or territory	Unalloyed				Alloyed		
	2016	2017			2016	2017	
		No. 1 January	No. 2 January	Other January		Segregated January	Unsegregated January
Belgium	9,030	192	226	417	8,370	41	160
Canada	23,400	--	--	3,280	51,200	--	4,320
China	283,000	9,400	8,290	11,200	377,000	9,220	17,500
Germany	24,900	736	271	49	8,150	12	551
Hong Kong	6,570	115	24	212	17,100	119	861
India	1,580	79	25	18	23,000	728	178
Japan	6,520	35	119	279	8,730	--	701
Korea, Republic of	17,100	674	106	297	10,300	282	283
Mexico	1,660	340	--	5	951	6	3
Netherlands	12,100	498	19	274	1,170	--	18
Spain	182	12	9	--	7,770	114	194
Taiwan	8,260	419	107	--	1,740	76	79
Thailand	121	--	--	3	1,050	40	--
Other	14,900	1,690	425	56	16,900	208	1,160
Total	410,000	14,200	9,620	16,100	534,000	10,800	26,000

-- Zero.

¹Data are rounded to no more than three significant digits; may not add to totals shown.

Source: U.S. Census Bureau.