

Mineral Industry Surveys

For information, contact:

Daniel M. Flanagan, Copper Commodity Specialist
National Minerals Information Center
U.S. Geological Survey
989 National Center
Reston, VA 20192
Telephone: (703) 648-7726, Fax: (703) 648-7757
Email: dflanagan@usgs.gov

Samir Hakim (Data)
Telephone: (703) 648-7955
Fax: (703) 648-7975
Email: shakim@usgs.gov

Internet: <http://minerals.usgs.gov/minerals/>

COPPER IN NOVEMBER 2016

In November 2016, domestic mine production of recoverable copper was 112,000 metric tons (t), a decrease of 10% from 125,000 t in October and 8% less than that in November 2015. Average daily mine production was 3,750 t, 7% less than that in October. Total refinery production in November 2016 was 98,500 t, a decrease of 7% from 105,000 t in October and 8% less than that in November 2015. Average daily refinery production was 3,290 t, 3% less than that in October (fig. 1; tables 2, 4).

U.S. electrolytic refinery production in November 2016 was 46,600 t, a slight decrease (on a daily basis) compared with that in October and 5% less than that in November 2015. Electrowon production was 48,700 t, a decline of 6% (on a daily basis) relative to that in October and 9% less than that in November 2015. Smelter production in November 2016 was 46,200 t, 8% less (on a daily basis) than that in October and slightly less than that in November 2015 (tables 3, 4).

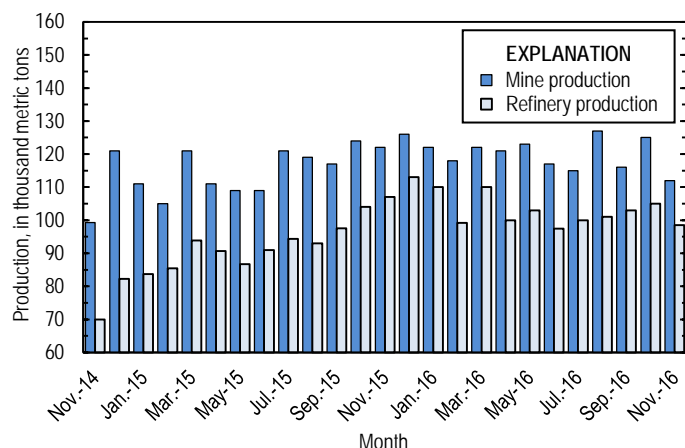


Figure 1. Monthly domestic copper mine production (recoverable) and refinery production from November 2014 through November 2016. Source: U.S. Geological Survey.

Stocks

Refined copper stocks in the United States at the end of November 2016 totaled 224,000 t and increased by 11%

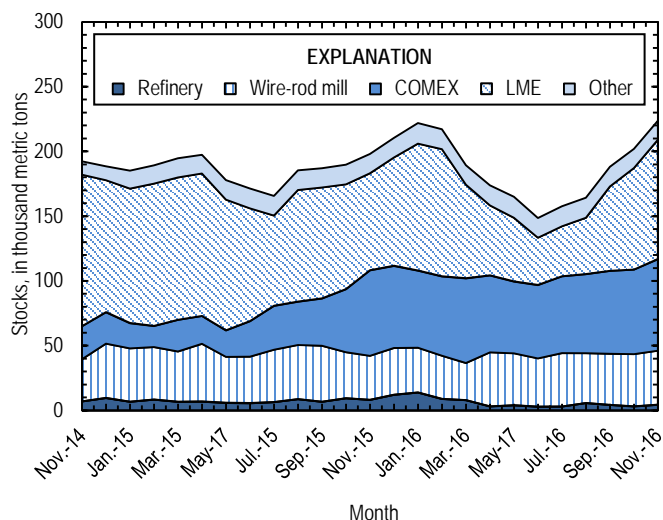


Figure 2. Monthly U.S. refined copper stocks, by type, from November 2014 through November 2016. Sources: American Metal Market, London Metal Exchange Ltd., and U.S. Geological Survey.

compared with those at the end of October owing to increases of 8% and 18%, respectively, in COMEX and LME stocks. Refined stocks were 13% greater than those at the end of November 2015 (fig. 2, table 10).

Prices

The average November 2016 COMEX spot copper price was \$2.47 per pound, the highest monthly average since July 2015. The November price increased by 15% from \$2.14 per pound in October and was 14% greater than that in November 2015 (table 11). Improved economic data in China, declining copper stocks at Chinese warehouses, and expected increases in domestic infrastructure investment contributed to the higher price (Dent, 2016). The average price for New York dealers' number 2 scrap in November 2016 was \$1.65 per pound, up by 7% from the average price in October and down slightly from the average price in November 2015 (table 12).

Reference Cited

Dent, Millicent, 2016, Trump just one positive factor for copper—Barclays:
American Metal Market, v. 124, no. 46-2, November 15, p. 9–10.

List services and Web feed subscribers are the first to receive notification of USGS minerals information publications and data releases. For information on how to subscribe, go to <http://minerals.usgs.gov/minerals/>.

TABLE 1
SALIENT STATISTICS OF THE COPPER INDUSTRY IN THE UNITED STATES¹

(Metric tons, unless otherwise specified)

	Source table ²	2016				January– November
		2015 ^p	September	October	November	
Production:						
Primary:						
Mine, recoverable	(2)	1,410,000	116,000 ^r	125,000 ^r	112,000	1,320,000
Smelter, total	(3)	527,000	54,000	51,900	46,200	511,000
Refinery:						
Electrolytic, domestic and foreign	(4)	503,000	48,200	48,800	46,600	519,000
Electrowon	(4)	588,000	51,400	53,300	48,700	567,000
Total	(4)	1,090,000	99,500	102,000	95,300	1,090,000
Secondary recoverable copper:						
Refineries	(5)	48,800	3,810	3,410	3,220	43,000
Ingot makers ³	(5)	56,300	4,690	4,690	4,690	51,600
Brass and wire-rod mills	(5)	570,000 ^r	52,400	54,800	52,900	569,000
Foundries, etc. ³	(5)	50,200	4,190	4,190	4,190	46,000
Consumption:						
Apparent	(8)	1,810,000	147,000	159,000 ^r	138,000	1,720,000
Refined (reported)	(7)	1,800,000	144,000	150,000 ^r	149,000	1,630,000
Purchased copper-base scrap	(9)	875,000 ^r	76,200	78,700	77,000	834,000
Stocks at end of period:						
Total refined	(10)	210,000	188,000	202,000 ^r	224,000	224,000
Blister, etc.	(10)	13,900	12,600	14,700 ^r	14,700	14,700
Prices, U.S. producers cathode (cents per pound) ⁴	(11)	256.150	218.752	218.885	251.388	221.572
Imports: ⁵						
Ore and concentrate ⁶	(13)	295 ^r	--	3	--	105
Refined	(13)	686,000	55,200	64,500	67,100	636,000
Exports: ⁵						
Ore and concentrate ⁶	(14)	392,000	31,200	31,700	22,000	310,000
Refined	(14)	86,200	6,630	7,750	13,100	126,000

^pPreliminary. ^rRevised. -- Zero.

¹Data are rounded to no more than three significant digits, except prices; may not add to totals shown.

²Numbers in parentheses refer to the tables where these data are located.

³Monthly data estimated based on 2014 monthly average.

⁴Source: Platts Metals Week.

⁵Source: U.S. Census Bureau.

⁶Copper content.

TABLE 2
MINE PRODUCTION OF RECOVERABLE COPPER IN THE UNITED STATES¹

(Metric tons)

Period	Recoverable copper			Contained copper		
	Arizona	Others ²	Total	Electrowon	Concentrates ³	Total
2015: ^p						
November	85,700	36,300	122,000	53,800	70,900	125,000
December	90,300	36,000	126,000	55,700	73,100	129,000
January–December	985,000	422,000 ^r	1,410,000	588,000	851,000	1,440,000
2016:						
January	84,500	37,100	122,000	54,500	70,400	125,000
February	79,400	38,900	118,000	48,500	72,800	121,000
March	81,600	40,100	122,000	51,400	73,000	124,000
April	81,200	39,500	121,000	49,700	73,900	124,000
May	83,500	39,400	123,000	51,700	74,000	126,000
June	79,800	37,200	117,000	50,700	69,000	120,000
July	80,200	35,100	115,000	54,000	63,700	118,000
August	86,400	40,300	127,000	52,700	76,900	130,000
September	79,400 ^r	36,400	116,000 ^r	51,400	67,000 ^r	118,000 ^r
October	81,800 ^r	43,700 ^r	125,000 ^r	53,300	74,900 ^r	128,000 ^r
November	74,200	38,200	112,000	48,700	66,100	115,000
January–November	892,000	426,000	1,320,000	567,000	782,000	1,350,000

^pPreliminary. ^rRevised.

¹Data are rounded to no more than three significant digits; may not add to totals shown.

²Includes production from Idaho, Michigan, Missouri, Montana, Nevada, New Mexico, and Utah.

³Includes copper content of precipitates and other metal concentrates.

TABLE 3
COPPER PRODUCED AT SMELTERS IN
THE UNITED STATES^{1,2}

(Metric tons, copper content)

Period	Anode production
2015: ^p	
November	46,500
December	55,100
January–December	527,000
2016:	
January	45,600
February	46,100
March	41,400
April	47,300
May	51,900
June	45,400
July	33,100
August	47,700
September	54,000
October	51,900
November	46,200
January–November	511,000

^pPreliminary.

¹Includes blister and copper anode from primary or secondary sources.

²Data are rounded to no more than three significant digits; may not add to total shown.

TABLE 4
PRODUCTION OF REFINED COPPER, BY SOURCE AND METHOD OF RECOVERY¹

(Metric tons)

Period	Primary materials			Scrap	Total refined
	Electrolytically refined ²	Electrowon	Total		
2015: ^p					
November	49,000	53,800	103,000	4,250	107,000
December	53,000	55,700	109,000	4,050	113,000
January–December	503,000	588,000	1,090,000	48,800	1,140,000
2016:					
January	51,100	54,500	106,000	4,250	110,000
February	43,500	48,500	92,000	7,190	99,200
March	53,300	51,400	105,000	4,900	110,000
April	47,100	49,700	96,800	3,200	100,000
May	48,200	51,700	99,900	3,180	103,000
June	43,600	50,700	94,200	3,260	97,500
July	43,200	54,000	97,200	3,280	100,000
August	45,200	52,700	97,900	3,300	101,000
September	48,200	51,400	99,500 ^r	3,810	103,000
October	48,800	53,300	102,000	3,410	106,000
November	46,600	48,700	95,300	3,220	98,600
January–November	519,000	567,000	1,090,000	43,000	1,130,000

^pPreliminary. ^rRevised.

¹Data are rounded to no more than three significant digits; may not add to totals shown.

²From domestic and foreign source materials.

TABLE 5
COPPER RECOVERABLE IN UNALLOYED AND ALLOYED FORM FROM PURCHASED COPPER-BASE SCRAP¹

(Metric tons, copper content)

Period	Refineries ²		Ingot makers ³		Brass and wire-rod mills		Foundries, etc. ³		Total ⁴
	New scrap	Old scrap	New scrap	Old scrap	New scrap	Old scrap	New scrap	Old scrap	
2015: ^p									
November	1,640	2,610	826	3,860	44,100 ^r	2,780	3,290	896	60,000 ^r
December	1,640	2,410	826	3,860	44,100 ^r	2,490	3,290	896	59,500 ^r
January–December	17,900	30,900	9,910	46,400	533,000 ^r	37,100	39,500	10,800	725,000 ^r
2016:									
January	1,640	2,620	826	3,860	46,300 ^r	3,430	3,290	896	62,900 ^r
February	1,640	5,550	826	3,860	45,700 ^r	3,190	3,290	896	64,900 ^r
March	1,660	3,240	826	3,860	46,000 ^r	3,150	3,290	896	62,900 ^r
April	1,630	1,570	826	3,860	50,500	2,790	3,290	896	65,300
May	1,610	1,570	826	3,860	50,400	2,610	3,290	896	65,100
June	1,680	1,580	826	3,860	49,600	3,000	3,290	896	64,700
July	1,680	1,600	826	3,860	48,200	2,600	3,290	896	63,000
August	1,680	1,620	826	3,860	48,900	2,790	3,290	896	63,900
September	1,680	2,130	826	3,860	49,700	2,730	3,290	896	65,100
October	1,680	1,740	826	3,860	51,800	3,020	3,290	896	67,100
November	1,680	1,540	826	3,860	49,900	3,060	3,290	896	65,000
January–November	18,200	24,700	9,090	42,500	537,000	32,400	36,200	9,860	710,000

^pPreliminary. ^rRevised.

¹Data are rounded to no more than three significant digits; may not add to totals shown.

²Electrolytically refined and fire-refined from scrap based on source of material at smelter or refinery level.

³Monthly data and 2015 cumulative data estimated based on 2014 annual data.

⁴Does not include an estimate, based on reported 2014 data, of 2,950 tons per month from new scrap and 2,530 tons per month from old scrap, of copper recovered from scrap other than copper-base.

TABLE 6
PRODUCTION, SHIPMENTS, AND STOCKS OF BRASS AND WIRE-ROD SEMIFABRICATES¹

(Metric tons, gross weight)

Period	Production		Shipments		Stocks, end of period	
	Brass mills	Wire-rod mills	Brass mills	Wire-rod mills	Brass mills	Wire-rod mills
2015: ^p						
November	72,500	95,900	72,800	100,000	28,800	25,900
December	72,700	92,200	73,100	92,200	28,400	26,000
January–December	891,000	1,320,000	891,000	1,310,000	28,400	26,000
2016:						
January	73,600	112,000	73,400	110,000	28,600	27,600
February	73,600	109,000	73,900	108,000	28,200	28,900
March	75,000	117,000	74,200	113,000	28,900	33,100
April	73,500	109,000	73,300	108,000	29,200	29,400
May	72,300	110,000	73,700	111,000	27,800	28,300
June	72,300	112,000	71,200	110,000	28,900	30,200
July	72,800	103,000	72,700	103,000	29,100	29,600
August	74,400	113,000	73,800	113,000	29,600	29,600
September	72,500	106,000	73,500	110,000	28,700	25,200
October	74,800	111,000 ^r	75,100	109,000	28,500	27,100 ^r
November	72,700	108,000	72,800	107,000	28,300	28,100
January–November	807,000	1,210,000	808,000	1,200,000	28,300	28,100

^pPreliminary. ^rRevised.

¹Data are rounded to no more than three significant digits; may not add to totals shown.

TABLE 7
CONSUMPTION OF REFINED COPPER¹

(Metric tons)

Period and item	Brass mills	Wire-rod mills	Other plants ²	Total
2015: ^p				
November	35,300	97,500	4,690	137,000
December	35,000	95,800	4,690	135,000
January–December	422,000	1,320,000	56,200	1,800,000
2016:				
January	34,800	110,000	4,690	149,000
February	35,700	107,000	4,690	147,000
March	35,400	116,000	4,690	156,000
April	34,900	107,000	4,690	146,000
May	34,400	108,000	4,690	147,000
June	35,500	110,000	4,690	150,000
July	35,500	100,000	4,690	141,000
August	35,600	111,000	4,690	152,000
September	35,400	103,000	4,690	144,000
October	35,400	110,000 ^r	4,690	150,000 ^r
November	34,400	110,000	4,690	149,000
January–November	387,000	1,190,000	51,600	1,630,000

^pPreliminary. ^rRevised.

¹Data are rounded to no more than three significant digits; may not add to totals shown.

²Monthly and 2015 cumulative consumption data by ingot makers, chemical plants, foundries, and miscellaneous manufacturers is estimated based on 2014 annual data.

TABLE 8
U.S. APPARENT CONSUMPTION OF COPPER¹

(Metric tons)

Period	Refined copper production	Copper in old scrap ²	Refined general imports ³	Refined exports ³	Stock change during period	Apparent consumption
2015: ^p						
November	103,000	12,700	43,500	8,690	8,210	142,000
December	109,000	12,200	44,800	7,270	12,500	146,000
January–December	1,090,000	156,000	664,000	86,500	18,200	1,810,000
2016:						
January	106,000	13,300	56,000	6,390	11,500	157,000
February	91,800	16,000	43,800	16,800	(4,810)	140,000
March	105,000	13,700	43,400	24,800	(27,900)	165,000
April	96,700	11,600	52,400	9,650	(15,500)	167,000
May	99,900	11,500	52,400	22,000	(8,810)	151,000
June	94,200	11,900	63,400	5,600	(16,400)	180,000
July	97,200	11,500	68,200	6,510	8,220	162,000
August	97,900	11,700	62,000	6,420	6,610	159,000
September	99,600	12,200	66,500	6,630	24,700	147,000
October	102,000	12,000	66,700	7,750	13,900 ^r	159,000 ^r
November	95,300	11,900	66,100	13,100	21,700	138,000
January–November	1,090,000	137,000	641,000	126,000	13,300	1,720,000

^pPreliminary. ^rRevised.

¹Data are rounded to no more than three significant digits; may not add to totals shown.

²Includes reported monthly production of copper from old scrap of copper-base, an estimate for annual reporters, and a monthly average of copper from non-copper-base materials based on 2014 data.

³Source: U.S. Census Bureau.

TABLE 9
CONSUMPTION OF PURCHASED COPPER-BASE SCRAP¹

(Metric tons, gross weight)

Period	Smelters and refineries		Ingot makers ²		Brass and wire-rod mills ³		Foundries, etc. ²		Total scrap used
	New scrap	Old scrap	New scrap	Old scrap	New scrap	Old scrap	New scrap	Old scrap	
2015: ^p									
November	1,690	2,680	1,990	5,480	51,900 ^r	2,860	3,950	996	71,600 ^r
December	1,690	2,680	1,990	5,480	51,900 ^r	2,540	3,950	996	71,200 ^r
January–December	18,700	31,700	23,900	65,700	637,000 ^r	38,500	47,400	12,000	875,000 ^r
2016:									
January	1,690	2,680	1,990	5,480	54,200 ^r	3,520	3,950	1,020	74,500 ^r
February	1,690	2,680	1,990	5,480	53,600 ^r	3,290	3,950	1,020	73,700 ^r
March	1,710	2,830	1,990	5,480	53,900 ^r	3,230	3,950	1,020	74,100 ^r
April	1,680	1,570	1,990	5,480	58,400	2,880	3,950	1,020	77,000
May	1,660	1,570	1,990	5,480	58,400	2,690	3,950	1,020	76,700
June	1,730	1,590	1,990	5,480	57,500	3,090	3,950	1,020	76,400
July	1,730	1,590	1,990	5,480	56,200	2,670	3,950	1,020	74,600
August	1,730	1,590	1,990	5,480	56,900	2,870	3,950	1,020	75,500
September	1,730	1,590	1,990	5,480	57,600	2,800	3,950	1,020	76,200
October	1,730	1,590	1,990	5,480	59,800	3,120	3,950	1,020	78,700
November	1,730	1,590	1,990	5,480	58,000	3,250	3,950	1,020	77,000
January–November	18,800	20,900	21,900	60,200	624,000	33,400	43,500	11,200	834,000

^pPreliminary. ^rRevised.

¹Data are rounded to no more than three significant digits; may not add to totals shown.

²Monthly data estimated from 2014 annual data.

³Consumption at brass and wire-rod mills assumed equal to receipts.

TABLE 10
COPPER STOCKS AT END OF PERIOD¹

(Metric tons)

Period	Crude copper ²	Refined copper					LME ⁵	Total refined
		Refineries ³	Wire-rod mills ³	Brass mills ³	Other ⁴	Comex		
2015: ^p								
November	13,500	8,120	34,000	7,360	7,560	66,000	75,000	198,000
December	13,900	12,000	36,200	7,580	7,560	63,300	83,800	210,000
2016:								
January	13,700	13,800	34,600	8,340	7,560	59,500	98,100	222,000
February	14,500	8,820	33,400	7,840	7,560	61,200	98,300	217,000
March	13,600	7,900	28,700	7,460	7,560	65,300	72,400	189,000
April	12,400	3,200	41,600	7,950	7,560	59,400	54,100	174,000
May	15,500 ^r	3,950	40,100	8,670	7,560	55,400	49,300	165,000
June	18,700 ^r	2,820	37,300	7,680	7,560	56,600	36,600	149,000
July	13,500	3,040	41,200 ^r	7,940	7,560	59,300	38,600	158,000 ^r
August	12,500	5,660	38,500 ^r	7,930	7,560	61,000	43,600	164,000 ^r
September	12,600	4,230	39,500	7,650	7,560	64,000	65,200	188,000
October	14,700 ^r	3,230	40,200 ^r	7,270	7,560	65,300	78,400	202,000 ^r
November	14,700	4,290	41,800	7,070	7,560	70,600	92,400	224,000

^pPreliminary. ^rRevised.

¹Data are rounded to no more than three significant digits; may not add to totals shown.

²Copper content of blister and anode.

³Stocks of refined copper as reported; no estimates are made for nonrespondents.

⁴Monthly estimates based on reported and 2014 annual data, comprising stocks at ingot makers, chemical plants, foundries, and miscellaneous manufacturers.

⁵London Metal Exchange Ltd., U.S. warehouses.

TABLE 11
AVERAGE PRICE OF COPPER IN THE UNITED STATES
AND ON THE LONDON METAL EXCHANGE

(Cents per pound)

Period	U.S. producers cathode ¹	Comex first position ²	LME cash price Grade A
2015:			
November	220.663	215.538	218.070
December	213.216	208.216	209.949
Year	256.150	250.814	249.526
2016:			
January	205.695	200.945	202.406
February	212.505	207.505	208.424
March	228.409	223.159	224.394
April	223.726	218.288	220.017
May	216.831	211.143	213.544
June	215.520	209.770	210.025
July	226.296	220.733	220.235
August	219.284	214.096	215.811
September	218.752	213.752	213.496
October	218.885	214.010	214.629
November	251.388	246.638	246.878
January–November	221.572	216.367	217.260

¹Listed as "U.S. producer cathode" and sum of "Comex high grade first position" and "NY Dealer Premium Cathode."

²Listed as "Comex high grade first position."

Source: Platts Metals Week.

TABLE 12
NEW YORK AVERAGE BUYING PRICES FOR COPPER SCRAP

(Cents per pound)

Month	Brass mills No. 1 scrap	Refiners No. 2 scrap	Dealers (New York)	
			No. 2 Scrap	Red brass turnings and borings
2015:				
November	212.58	189.37	167.97	134.37
December	205.30	183.93	148.64	127.05
Year	246.13	222.45	194.49	144.62
2016:				
January	198.61	178.84	143.61	125.37
February	205.90	187.18	141.50	125.00
March	222.17	202.72	151.02	128.70
April	217.98	199.00	152.50	130.00
May	210.83	192.43	154.26	132.38
June	210.30	191.68	150.27	130.14
July	221.00	201.70	157.15	134.10
August	213.54	192.26	156.20	133.35
September	213.43	191.88	153.21	131.57
October	212.71	190.05	153.88	131.95
November	241.32	218.05	165.00	137.50
January–November	215.25	195.07	152.60	130.91

Source: American Metal Market.

TABLE 13
U.S. IMPORTS FOR CONSUMPTION OF COPPER (UNMANUFACTURED), BY CLASS¹

(Metric tons, copper content)

Country or territory	Ore and concentrate			Matte, ash, and precipitates			Blister and anodes			Refined		
	2016			2016			2016			2016		
	January–			January–			January–			January–		
	2015	November	November	2015	November	November	2015	November	November	2015	November	November
Belgium	--	--	--	257	--	27	--	--	--	--	--	--
Canada	98	--	72	198	76	323	2	(2)	2	191,000	18,500	175,000
Chile	--	--	--	--	--	--	--	--	--	358,000	39,200	318,000
China	--	--	--	3	--	--	--	--	(2)	35	17	75
Congo (Kinshasa)	--	--	--	--	--	--	--	--	--	21,400	1,300	18,100
Finland	--	--	--	--	--	--	308	34	140	42	--	108
Germany	78	--	--	24	--	--	7	--	(2)	2,130	38	1,620
India	--	--	3	--	--	--	--	--	--	792	--	1,210
Japan	--	--	--	141	9	109	3	1	3	4,010	241	3,730
Mexico	10	--	3	--	(2)	41	--	--	--	94,800	4,730	93,400
Netherlands	--	--	--	257	--	69	3	(2)	(2)	(2)	(2)	(2)
Peru	--	--	--	--	--	--	--	--	--	11,700	2,500	20,800
Other	109	--	27	262	49	112	99	(2)	76	2,380	521	3,970
Total	295	--	105	1,140	134	681	422	35	220	686,000	67,100	636,000

-- Zero.

¹Data are rounded to no more than three significant digits; may not add to totals shown.

²Less than ½ unit.

Source: U.S. Census Bureau.

TABLE 14
U.S. EXPORTS OF COPPER (UNMANUFACTURED), BY CLASS¹

(Metric tons, copper content)

Country or territory	Ore and concentrate			Matte, ash, and precipitates			Blister and anodes			Refined		
	2016			2016			2016			2016		
	January–			January–			January–			January–		
	2015	November	November	2015	November	November	2015	November	November	2015	November	November
Belgium	3	--	(2)	23	1,100	5,150	228	53	650	--	--	--
Canada	21,100	2,100	24,100	15,200	938	11,200	2,310	182	1,970	36,000	2,890	30,900
China	37,800	4,230	51,800	153	35	52	773	29	465	4,750	2	29,800
Germany	--	--	--	70	77	187	413	20	497	12	--	21
Hong Kong	--	--	--	--	--	36	1,640	79	1,030	7	--	--
Italy	--	--	--	--	--	--	209	21	313	31	6	237
Japan	9,130	3,010	20,400	185	33	180	39	3	453	1,000	(2)	157
Korea, Republic of	157	43	138	38	36	334	1,520	112	1,300	1,190	(2)	65
Mexico	321,000	12,700	213,000	--	--	--	64	13	87	42,100	10,200	63,900
Singapore	--	--	--	21	--	--	64	20	42	78	--	13
Spain	--	--	--	16	20	20	141	41	266	24	(2)	4
Switzerland	--	--	--	--	--	--	31	6	24	5	1	5
Taiwan	--	--	--	--	53	324	56	--	60	62	3	62
Other	2,240	7	848	231	9	846	3,400	267	1,650	977	26	488
Total	392,000	22,000	310,000	15,900	2,300	18,300	10,700	846	8,810	86,200	13,100	126,000

-- Zero.

¹Data are rounded to no more than three significant digits; may not add to totals shown.

²Less than ½ unit.

Source: U.S. Census Bureau.

TABLE 15
U.S. COPPER SCRAP IMPORTS¹

(Metric tons, gross weight)

Country or territory	Unalloyed			Alloyed		
	2016			2016		
	2015	November	January– November	2015	November	January– November
Canada	12,800	1,270	12,200	42,300	5,040	47,700
Chile	--	--	41	392	--	187
Colombia	151	34	259	1,890	141	1,120
Costa Rica	426	18	301	1,310	110	940
Guatemala	138	--	--	545	32	321
Honduras	167	--	102	502	50	342
Mexico	12,400	1,160	12,100	30,700	3,150	31,200
Nicaragua	--	--	--	590	40	244
Other	2,390	287	1,920	4,880	521	5,440
Total	28,500	2,760	26,900	83,100	9,070	87,500

-- Zero.

¹Data are rounded to no more than three significant digits; may not add to totals shown.

Source: U.S. Census Bureau.

TABLE 16
U.S. COPPER SCRAP EXPORTS¹

(Metric tons, gross weight)

Country or territory	Unalloyed							Alloyed				
	2016							2016				
	No. 1		No. 2		Other			Segregated		Unsegregated		
	January–		January–		January–			January–		January–		
	2015	November	November	November	November	November	November	2015	November	November	November	November
Belgium	10,800	567	3,530	651	3,150	80	1,670	12,600	155	2,310	438	5,580
Canada	27,600	--	--	--	--	2,020	21,800	39,500	205	3,090	4,610	44,600
China	281,000	9,100	99,200	6,450	62,900	9,270	90,500	378,000	9,250	95,000	24,400	253,000
Germany	30,500	1,520	15,300	544	4,590	452	2,740	13,900	1	447	454	7,280
Hong Kong	8,720	131	2,010	150	1,200	222	2,670	14,100	104	706	849	15,300
India	4,050	14	621	38	336	25	476	17,600	1,790	20,000	--	1,480
Japan	6,140	34	2,090	339	1,460	118	2,120	11,900	48	1,560	728	6,410
Korea, Republic of	16,500	779	8,870	170	2,840	403	4,110	12,000	147	4,520	468	5,070
Mexico	723	136	1,440	--	32	1	67	3,490	5	756	2	192
Netherlands	11,300	385	5,270	--	2,890	342	3,090	720	--	140	--	969
Spain	457	--	70	38	55	38	57	10,500	--	471	466	6,600
Taiwan	7,650	712	4,710	185	1,500	60	1,220	2,430	94	623	144	967
Thailand	143	--	51	--	--	2	63	2,400	40	727	--	278
Other	20,500	1,100	11,000	176	1,600	59	711	9,390	162	2,690	1,300	13,200
Total	426,000	14,500	154,000	8,750	82,500	13,100	131,000	529,000	12,000	133,000	33,800	361,000

-- Zero.

¹Data are rounded to no more than three significant digits; may not add to totals shown.

Source: U.S. Census Bureau.