

Mineral Industry Surveys

For information, contact:

Mark Brininstool, Copper Commodity Specialist
National Minerals Information Center
U.S. Geological Survey
989 National Center
Reston, VA 20192
Telephone: (703) 648-7798, Fax: (703) 648-7757
Email: mbrininstool@usgs.gov

Samir Hakim (Data)
Telephone: (703) 648-7955
Fax: (703) 648-7975
Email: shakim@usgs.gov

Internet: <http://minerals.usgs.gov/minerals/>

COPPER IN OCTOBER 2016

The U.S. average daily mine production of recoverable copper in October 2016 increased by 3% compared with that in September 2016 and was essentially unchanged from that in October 2015. Mine production in October 2016 increased by 7% and total refinery production increased slightly compared with those in September 2016 (fig. 1, table 1).

Average daily smelter production in October 2016 decreased by 7% compared with that in September 2016 and average daily electrolytic refinery production decreased slightly. Smelter and electrolytic refinery production in October 2016 increased by 7% and 10%, respectively, compared with those in October 2015 (tables 3, 4).

Total refined copper stocks in the United States at the end of October increased by 9% compared with those at the end of September owing to a 20% increase in domestic LME stocks and a 9% increase in wire-rod mill stocks. Total refined stocks at the end of October 2016 were 8% greater than those at the end of October 2015 (table 10).

The average October 2016 COMEX spot copper price was essentially unchanged at \$2.14 per pound from the average price in September and was 10% less than the average price in October 2015 (table 11). The average October 2016 New York dealers' number 2 scrap price was essentially unchanged at \$1.54 per pound from the average price in September and was 13% less than the average price in October 2015 (table 12).

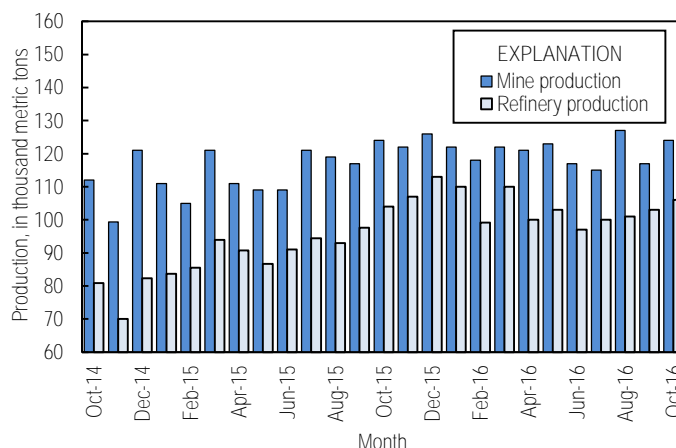


Figure 1. Monthly domestic copper mine production (recoverable) and refinery production from October 2014 through October 2016. Source: U.S. Geological Survey.

List services and Web feed subscribers are the first to receive notification of USGS minerals information publications and data releases. For information on how to subscribe, go to <http://minerals.usgs.gov/minerals/>.

TABLE 1
SALIENT STATISTICS OF THE COPPER INDUSTRY IN THE UNITED STATES¹

(Metric tons, unless otherwise specified)

	Source table ²	2015 ^p	2016			
			August	September	October	January– October
Production:						
Primary:						
Mine, recoverable	(2)	1,410,000	127,000	117,000	124,000	1,210,000
Smelter, total	(3)	527,000	47,700	54,000	51,900	464,000
Refinery:						
Electrolytic, domestic and foreign	(4)	503,000	45,200	48,200	48,800	472,000
Electrowon	(4)	588,000	52,700	51,400	53,300	518,000
Total	(4)	1,090,000	97,900	99,600	102,000	990,000
Secondary recoverable copper:						
Refineries	(5)	48,800	3,300	3,810	3,410	39,800
Ingot makers ³	(5)	56,300	4,690	4,690	4,690	46,900
Brass and wire-rod mills	(5)	606,000	51,700	52,400	54,800	524,000
Foundries, etc. ³	(5)	50,200	4,190	4,190	4,190	41,900
Consumption:						
Apparent	(8)	1,810,000	159,000	147,000 ^r	153,000	1,580,000
Refined (reported)	(7)	1,800,000	152,000	144,000	148,000	1,480,000
Purchased copper-base scrap	(9)	907,000	75,500	76,200	78,700	765,000
Stocks at end of period:						
Total refined	(10)	210,000	163,000	188,000 ^r	205,000	205,000
Blister, etc.	(10)	13,900	12,500	12,600	13,500	13,500
Prices, U.S. producers cathode (cents per pound) ⁴	(11)	256.150	219.284	218.752	218.885	218.590
Imports: ⁵						
Ore and concentrate ⁶	(13)	301	38	--	3	105
Refined	(13)	686,000	60,200	55,200	64,500	569,000
Exports: ⁵						
Ore and concentrate ⁶	(14)	392,000	33,500	31,200	31,700	288,000
Refined	(14)	86,200	6,420	6,630	7,750	113,000

^pPreliminary. ^rRevised. -- Zero.

¹Data are rounded to no more than three significant digits, except prices; may not add to totals shown.

²Numbers in parentheses refer to the tables where these data are located.

³Monthly data estimated based on 2014 monthly average.

⁴Source: Platts Metals Week.

⁵Source: U.S. Census Bureau.

⁶Copper content.

TABLE 2
MINE PRODUCTION OF RECOVERABLE COPPER IN THE UNITED STATES¹

(Metric tons)

Period	Recoverable copper			Contained copper		
	Arizona	Others ²	Total	Electrowon	Concentrates ³	Total
2015: ^P						
October	89,300	34,400	124,000	55,300	71,300	127,000
November	85,700	36,300	122,000	53,800	70,900	125,000
December	90,300	36,000	126,000	55,700	73,100	129,000
January–December	985,000	419,000	1,410,000	588,000	851,000	1,440,000
2016:						
January	84,500	37,100	122,000	54,500	70,400	125,000
February	79,400	38,900	118,000	48,500	72,800	121,000
March	81,600	40,100	122,000	51,400	73,000	124,000
April	81,200	39,500	121,000	49,700	73,900	124,000
May	83,500	39,400	123,000	51,700	74,000	126,000
June	79,800	37,200	117,000	50,700	69,000	120,000
July	80,200	35,100	115,000	54,000	63,700	118,000
August	86,400	40,300	127,000	52,700	76,900	130,000
September	80,100	36,400	117,000	51,400	67,600	119,000
October	81,000	43,500	124,000	53,300	69,300	123,000
January–October	818,000	387,000	1,210,000	518,000	711,000	1,230,000

^PPreliminary.

¹Data are rounded to no more than three significant digits; may not add to totals shown.

²Includes production from Idaho, Michigan, Missouri, Montana, Nevada, New Mexico, and Utah.

³Includes copper content of precipitates and other metal concentrates.

TABLE 3
COPPER PRODUCED AT SMELTERS IN
THE UNITED STATES^{1, 2}

(Metric tons, copper content)

Period	Anode production
2015: ^P	
October	48,700
November	46,500
December	55,100
January–December	527,000
2016:	
January	45,600
February	46,100
March	41,400
April	47,300
May	51,900
June	45,400
July	33,100
August	47,700
September	54,000
October	51,900
January–October	464,000

^PPreliminary.

¹Includes blister and copper anode from primary or secondary sources.

²Data are rounded to no more than three significant digits; may not add to total shown.

TABLE 4
PRODUCTION OF REFINED COPPER, BY SOURCE AND METHOD OF RECOVERY¹

(Metric tons)

Period	Primary materials			Scrap	Total refined
	Electrolytically refined ²	Electrowon	Total		
2015: ^P					
October	44,200	55,300	99,500	5,010	104,000
November	49,000	53,800	103,000	4,250	107,000
December	53,000	55,700	109,000	4,050	113,000
January–December	503,000	588,000	1,090,000	48,800	1,140,000
2016:					
January	51,100	54,500	106,000	4,250	110,000
February	43,500	48,500	92,000	7,190	99,200
March	53,300	51,400	105,000	4,900	110,000
April	47,100	49,700	96,800	3,200	100,000
May	48,200	51,700	99,900	3,180	103,000
June	43,600	50,700	94,200	3,260	97,500
July	43,200	54,000	97,200	3,280	100,000
August	45,200	52,700	97,900	3,300	101,000
September	48,200	51,400	99,600	3,810	103,000
October	48,800	53,300	102,000	3,410	106,000
January–October	472,000	518,000	990,000	39,800	1,030,000

^PPreliminary. ¹Revised.

¹Data are rounded to no more than three significant digits; may not add to totals shown.

²From domestic and foreign source materials.

TABLE 5
COPPER RECOVERABLE IN UNALLOYED AND ALLOYED FORM FROM PURCHASED COPPER-BASE SCRAP¹

(Metric tons, copper content)

Period	Refineries ²		Ingot makers ³		Brass and wire-rod mills		Foundries, etc. ³		Total ⁴
	New scrap	Old scrap	New scrap	Old scrap	New scrap	Old scrap	New scrap	Old scrap	
2015: ^P									
October	1,710	3,310	826	3,860	47,000	2,910	3,290	896	63,800
November	1,640	2,610	826	3,860	46,800	2,780	3,290	896	62,700
December	1,640	2,410	826	3,860	46,800	2,490	3,290	896	62,200
January–December	17,900	30,900	9,910	46,400	569,000	37,100	39,500	10,800	758,000
2016:									
January	1,640	2,620	826	3,860	49,000	3,430	3,290	896	65,500
February	1,640	5,550	826	3,860	48,400	3,190	3,290	896	67,600
March	1,660	3,240	826	3,860	48,700	3,150	3,290	896	65,600
April	1,630	1,570	826	3,860	50,500	2,790	3,290	896	65,300
May	1,610	1,570	826	3,860	50,400	2,610	3,290	896	65,100
June	1,680	1,580	826	3,860	49,600	3,000	3,290	896	64,700
July	1,680	1,600	826	3,860	48,200	2,600	3,290	896	63,000
August	1,680	1,620	826	3,860	48,900	2,790	3,290	896	63,900
September	1,680	2,130	826	3,860	49,700	2,730	3,290	896	65,100
October	1,680	1,740	826	3,860	51,800	3,020	3,290	896	67,100
January–October	16,600	23,200	8,260	38,600	495,000	29,300	32,900	8,960	653,000

^PPreliminary.

¹Data are rounded to no more than three significant digits; may not add to totals shown.

²Electrolytically refined and fire-refined from scrap based on source of material at smelter or refinery level.

³Monthly data and 2015 cumulative data estimated based on 2014 annual data.

⁴Does not include an estimate, based on reported 2014 data, of 2,950 tons per month from new scrap and 2,530 tons per month from old scrap, of copper recovered from scrap other than copper-base.

TABLE 6
PRODUCTION, SHIPMENTS, AND STOCKS OF BRASS AND WIRE-ROD SEMIFABRICATES¹

(Metric tons, gross weight)

Period	Production		Shipments		Stocks, end of period	
	Brass mills	Wire-rod mills	Brass mills	Wire-rod mills	Brass mills	Wire-rod mills
2015: ^P						
October	74,200	114,000	73,500	114,000	29,100	30,300
November	72,500	95,900	72,800	100,000	28,800	25,900
December	72,700	92,200	73,100	92,200	28,400	26,000
January–December	891,000	1,320,000	891,000	1,310,000	28,400	26,000
2016:						
January	73,600	112,000	73,400	110,000	28,600	27,600
February	73,600	109,000	73,900	108,000	28,200	28,900
March	75,000	117,000	74,200	113,000	28,900	33,100
April	73,500	109,000	73,300	108,000	29,200	29,400
May	72,300	110,000	73,700	111,000	27,800	28,300
June	72,300	112,000	71,200	110,000	28,900	30,200
July	72,800	103,000	72,700	103,000	29,100	29,600
August	74,400	113,000	73,800	113,000	29,600	29,600
September	72,500	106,000	73,500	110,000	28,700	25,200
October	74,800	109,000	75,100	109,000	28,500	25,900
January–October	735,000	1,100,000	735,000	1,100,000	28,500	25,900

^PPreliminary.

¹Data are rounded to no more than three significant digits; may not add to totals shown.

TABLE 7
CONSUMPTION OF REFINED COPPER¹

(Metric tons)

Period and item	Brass mills	Wire-rod mills	Other plants ²	Total
2015: ^P				
October	34,900	113,000	4,690	152,000
November	35,300	97,500	4,690	137,000
December	35,000	95,800	4,690	135,000
January–December	422,000	1,320,000	56,200	1,800,000
2016:				
January	34,800	110,000	4,690	149,000
February	35,700	107,000	4,690	147,000
March	35,400	116,000	4,690	156,000
April	34,900	107,000	4,690	146,000
May	34,400	108,000	4,690	147,000
June	35,500	110,000	4,690	150,000
July	35,500	100,000	4,690	141,000
August	35,600	111,000	4,690	152,000
September	35,400	103,000	4,690	144,000
October	35,400	108,000	4,690	148,000
January–October	352,000	1,080,000	46,900	1,480,000

^PPreliminary.

¹Data are rounded to no more than three significant digits; may not add to totals shown.

²Monthly and 2015 cumulative consumption data by ingot makers, chemical plants, foundries, and miscellaneous manufacturers is estimated based on 2014 annual data.

TABLE 8
U.S. APPARENT CONSUMPTION OF COPPER¹

(Metric tons)

Period	Refined copper production	Copper in old scrap ²	Refined general imports ³	Refined exports ³	Stock change during period	Apparent consumption
2015: ^P						
October	99,400	13,500	49,900	6,110	2,750	154,000
November	103,000	12,700	43,500	8,690	8,210	142,000
December	109,000	12,200	44,800	7,270	12,500	146,000
January–December	1,090,000	156,000	664,000	86,500	18,200	1,810,000
2016:						
January	106,000	13,300	56,000	6,390	11,500	157,000
February	91,800	16,000	43,800	16,800	(4,810)	140,000
March	105,000	13,700	43,400	24,800	(27,900)	165,000
April	96,700	11,600	52,400	9,650	(15,500)	167,000
May	99,900	11,500	52,400	22,000	(8,810)	151,000
June	94,200	11,900	63,400	5,600	(16,400)	180,000
July	97,200	11,500	68,200	6,510	8,220	162,000
August	97,900	11,700	62,000	6,420	6,610	159,000
September	99,600	12,200	66,500	6,630	24,700 ^r	147,000 ^r
October	102,000	12,000	66,700	7,750	19,800	153,000
January–October	990,000	125,000	575,000	113,000	(2,550)	1,580,000

^PPreliminary. ^rRevised.

¹Data are rounded to no more than three significant digits; may not add to totals shown.

²Includes reported monthly production of copper from old scrap of copper-base, an estimate for annual reporters, and a monthly average of copper from non-copper-base materials based on 2014 data.

³Source: U.S. Census Bureau.

TABLE 9
CONSUMPTION OF PURCHASED COPPER-BASE SCRAP¹

(Metric tons, gross weight)

Period	Smelters and refineries		Ingot makers ²		Brass and wire-rod mills ³		Foundries, etc. ²		Total scrap used
	New scrap	Old scrap	New scrap	Old scrap	New scrap	Old scrap	New scrap	Old scrap	
2015: ^P									
October	1,760	2,700	1,990	5,480	54,700	2,990	3,950	996	74,600
November	1,690	2,680	1,990	5,480	54,700	2,860	3,950	996	74,300
December	1,690	2,680	1,990	5,480	54,600	2,540	3,950	996	73,900
January–December	18,700	31,700	23,900	65,700	669,000	38,500	47,400	12,000	907,000
2016:									
January	1,690	2,680	1,990	5,480	56,900	3,520	3,950	1,020	77,200
February	1,690	2,680	1,990	5,480	56,300	3,290	3,950	1,020	76,400
March	1,710	2,830	1,990	5,480	56,600	3,230	3,950	1,020	76,800
April	1,680	1,570	1,990	5,480	58,400	2,880	3,950	1,020	77,000
May	1,660	1,570	1,990	5,480	58,400	2,690	3,950	1,020	76,700
June	1,730	1,590	1,990	5,480	57,500	3,090	3,950	1,020	76,400
July	1,730	1,590	1,990	5,480	56,200	2,670	3,950	1,020	74,600
August	1,730	1,590	1,990	5,480	56,900	2,870	3,950	1,020	75,500
September	1,730	1,590	1,990	5,480	57,600	2,800	3,950	1,020	76,200
October	1,730	1,590	1,990	5,480	59,800	3,120	3,950	1,020	78,700
January–October	17,100	19,300	19,900	54,800	575,000	30,100	39,500	10,200	765,000

^PPreliminary.

¹Data are rounded to no more than three significant digits; may not add to totals shown.

²Monthly data estimated from 2014 annual data.

³Consumption at brass and wire-rod mills assumed equal to receipts.

TABLE 10
COPPER STOCKS AT END OF PERIOD¹

(Metric tons)

Period	Crude copper ²	Refined copper						Total refined
		Refineries ³	Wire-rod mills ³	Brass mills ³	Other ⁴	Comex	LME ⁵	
2015: ^p								
October	17,900	9,330	35,600	7,670	7,560	48,600	81,000	190,000
November	13,500	8,120	34,000	7,360	7,560	66,000	75,000	198,000
December	13,900	12,000	36,200	7,580	7,560	63,300	83,800	210,000
2016:								
January	13,700	13,800	34,600	8,340	7,560	59,500	98,100	222,000
February	14,500	8,820	33,400	7,840	7,560	61,200	98,300	217,000
March	13,600	7,900	28,700	7,460	7,560	65,300	72,400	189,000
April	12,400	3,200	41,600	7,950	7,560	59,400	54,100	174,000
May	16,100	3,950	40,100	8,670	7,560	55,400	49,300	165,000
June	19,500	2,820	37,300	7,680	7,560	56,600	36,600	149,000
July	13,500	3,040	40,300	7,940	7,560	59,300	38,600	157,000
August	12,500	5,660	37,600	7,930	7,560	61,000	43,600	163,000
September	12,600	4,230 ^r	39,500	7,650	7,560	64,000	65,200	188,000 ^r
October	13,500	3,230	43,100	7,270	7,560	65,300	78,400	205,000

^pPreliminary. ^rRevised.

¹Data are rounded to no more than three significant digits; may not add to totals shown.

²Copper content of blister and anode.

³Stocks of refined copper as reported; no estimates are made for nonrespondents.

⁴Monthly estimates based on reported and 2014 annual data, comprising stocks at ingot makers, chemical plants, foundries, and miscellaneous manufacturers.

⁵London Metal Exchange Ltd., U.S. warehouses.

TABLE 11
AVERAGE PRICE OF COPPER IN THE UNITED STATES
AND ON THE LONDON METAL EXCHANGE

(Cents per pound)

Period	U.S. producers cathode ¹	Comex first position ²	LME cash price Grade A
2015:			
October	242.086	236.786	236.857
November	220.663	215.538	218.070
December	213.216	208.216	209.949
Year	256.150	250.814	249.526
2016:			
January	205.695	200.945	202.406
February	212.505	207.505	208.424
March	228.409	223.159	224.394
April	223.726	218.288	220.017
May	216.831	211.143	213.544
June	215.520	209.770	210.025
July	226.296	220.733	220.235
August	219.284	214.096	215.811
September	218.752	213.752	213.496
October	218.885	214.010	214.629
January–October	218.590	213.340	214.298

¹Listed as "U.S. producer cathode" and sum of "Comex high grade first position" and "NY Dealer Premium Cathode."

²Listed as "Comex high grade first position."

Source: Platts Metals Week.

TABLE 12
NEW YORK AVERAGE BUYING PRICES FOR COPPER SCRAP

(Cents per pound)

Month	Brass mills No. 1 scrap	Refiners No. 2 scrap	Dealers (New York)	
			No. 2 Scrap	Red brass turnings and borings
2015:				
October	233.61	210.14	176.91	139.41
November	212.58	189.37	167.97	134.37
December	205.30	183.93	148.64	127.05
Year	246.13	222.45	194.49	144.62
2016:				
January	198.61	178.84	143.61	125.37
February	205.90	187.18	141.50	125.00
March	222.17	202.72	151.02	128.70
April	217.98	199.00	152.50	130.00
May	210.83	192.43	154.26	132.38
June	210.30	191.68	150.27	130.14
July	221.00	201.70	157.15	134.10
August	213.54	192.26	156.20	133.35
September	213.43	191.88	153.21	131.57
October	212.71	190.05	153.88	131.95
January–October	212.65	192.77	151.36	130.26

Source: American Metal Market.

TABLE 13
U.S. IMPORTS FOR CONSUMPTION OF COPPER (UNMANUFACTURED), BY CLASS¹

(Metric tons, copper content)

Country or territory	Ore and concentrate			Matte, ash, and precipitates			Blister and anodes			Refined		
	2016			2016			2016			2016		
	2015	October	January– October	2015	October	January– October	2015	October	January– October	2015	October	January– October
Belgium	--	--	--	257	--	27	--	--	--	--	--	--
Canada	98	--	72	198	3	247	2	--	2	191,000	17,900	156,000
Chile	--	--	--	--	--	--	--	--	--	358,000	30,900	279,000
China	--	--	--	3	--	--	--	--	(2)	35	--	58
Congo (Kinshasa)	--	--	--	--	--	--	--	--	--	21,400	4,070	16,800
Finland	--	--	--	--	--	--	308	35	106	42	--	108
Germany	78	--	--	24	--	--	7	(2)	(2)	2,130	99	1,580
India	--	--	3	--	--	--	--	--	--	792	--	1,210
Japan	--	--	--	141	--	100	3	(2)	2	4,010	322	3,490
Mexico	10	--	--	--	--	41	--	--	--	94,800	8,880	88,700
Netherlands	--	--	--	257	--	69	3	--	(2)	(2)	--	(2)
Peru	--	--	--	--	--	--	--	--	--	11,700	2,000	18,300
Other	109	3	30	262	9	64	99	1	76	2,380	294	3,480
Total	295	3	105	1,140	12	547	422	36	185	686,000	64,500	569,000

-- Zero.

¹Data are rounded to no more than three significant digits; may not add to totals shown.

²Less than ½ unit.

Source: U.S. Census Bureau.

TABLE 14
U.S. EXPORTS OF COPPER (UNMANUFACTURED), BY CLASS¹

(Metric tons, copper content)

Country or territory	Ore and concentrate			Matte, ash, and precipitates			Blister and anodes			Refined		
	2016			2016			2016			2016		
	2015	October	January– October	2015	October	January– October	2015	October	January– October	2015	October	January– October
Belgium	3	--	(2)	23	459	4,050	228	46	598	--	--	--
Canada	21,100	1,920	22,000	15,200	1,310	10,300	2,310	135	1,790	36,000	1,330	28,000
China	37,800	10,500	47,600	153	--	17	773	--	437	4,750	31	29,800
Germany	--	--	--	70	58	110	413	27	477	12	(2)	21
Hong Kong	--	--	--	--	--	36	1,640	79	949	7	--	--
Italy	--	--	--	--	--	--	209	41	292	31	--	231
Japan	9,130	3,010	17,400	185	--	148	39	224	450	1,000	(2)	156
Korea, Republic of	157	--	95	38	36	297	1,520	116	1,190	1,190	3	65
Mexico	321,000	16,300	200,000	--	--	--	64	13	75	42,100	6,380	53,700
Singapore	--	--	--	21	--	--	64	--	22	78	--	13
Spain	--	--	--	16	--	--	141	--	225	24	(2)	3
Switzerland	--	--	--	--	--	--	31	6	18	5	--	4
Taiwan	--	--	--	--	35	271	56	--	60	62	(2)	59
Other	2,240	7	840	231	157	837	3,400	288	1,380	977	4	466
Total	392,000	31,700	288,000	15,900	2,050	16,000	10,700	975	7,960	86,200	7,750	113,000

-- Zero.

¹Data are rounded to no more than three significant digits; may not add to totals shown.

²Less than ½ unit.

Source: U.S. Census Bureau.

TABLE 15
U.S. COPPER SCRAP IMPORTS¹

(Metric tons, gross weight)

Country or territory	Unalloyed			Alloyed		
	2016			2016		
	2015	October	January– October	2015	October	January– October
Canada	12,800	1,060	11,000	42,300	5,460	42,700
Chile	--	20	41	392	10	187
Colombia	151	--	225	1,890	111	978
Costa Rica	426	37	283	1,310	48	831
Guatemala	138	--	--	545	17	289
Honduras	167	30	102	502	35	292
Mexico	12,400	1,310	10,900	30,700	3,070	28,100
Nicaragua	--	--	--	590	38	204
Other	2,390	180	1,630	4,880	563	4,920
Total	28,500	2,630	24,200	83,100	9,360	78,500

-- Zero.

¹Data are rounded to no more than three significant digits; may not add to totals shown.

Source: U.S. Census Bureau.

TABLE 16
U.S. COPPER SCRAP EXPORTS¹

(Metric tons, gross weight)

Country or territory	Unalloyed							Alloyed				
	2016							2016				
	No. 1		No. 2		Other			Segregated		Unsegregated		
	2015	October	January– October	October	January– October	October	January– October	2015	October	January– October	October	January– October
Belgium	10,800	302	2,960	64	2,500	59	1,590	12,600	218	2,150	217	5,140
Canada	27,600	--	--	--	--	1,930	19,800	39,500	164	2,890	4,790	40,000
China	281,000	10,800	90,100	6,880	56,400	10,100	81,200	378,000	10,400	85,700	26,700	228,000
Germany	30,500	1,010	13,800	991	4,050	233	2,290	13,900	1	446	188	6,830
Hong Kong	8,720	85	1,880	104	1,050	451	2,450	14,100	77	603	926	14,400
India	4,050	40	608	62	297	95	451	17,600	1,510	18,200	79	1,480
Japan	6,140	80	2,050	268	1,120	164	2,000	11,900	83	1,510	1,120	5,690
Korea, Republic of	16,500	547	8,090	139	2,670	384	3,710	12,000	267	4,370	273	4,600
Mexico	723	192	1,310	--	32	10	66	3,490	5	751	1	190
Netherlands	11,300	280	4,880	19	2,890	276	2,750	720	19	140	78	969
Spain	457	--	70	9	17	--	19	10,500	20	471	656	6,140
Taiwan	7,650	566	4,000	267	1,320	40	1,160	2,430	178	529	158	824
Thailand	143	27	51	--	--	5	61	2,400	97	687	--	278
Other	20,500	1,280	9,870	72	1,420	112	649	9,390	221	2,520	998	11,900
Total	426,000	15,200	140,000	8,870	73,800	13,900	118,000	529,000	13,300	121,000	36,200	327,000

-- Zero.

¹Data are rounded to no more than three significant digits; may not add to totals shown.

Source: U.S. Census Bureau.