

Mineral Industry Surveys

For information, contact:

Daniel M. Flanagan, Copper Commodity Specialist
 National Minerals Information Center
 U.S. Geological Survey
 989 National Center
 Reston, VA 20192
 Telephone: (703) 648-7726, Fax: (703) 648-7757
 Email: dflanagan@usgs.gov

Sheema Merchant (Data)
 Telephone: (703) 659-9944
 Fax: (703) 648-7975
 Email: smerchant@usgs.gov

Internet: <https://www.usgs.gov/centers/nmic>

COPPER IN APRIL 2021

In April 2021, domestic mine production of recoverable copper was 92,900 metric tons (t). The average daily mine production was 3,100 t, a decrease of 6% from that in March and 8% less than that in April 2020 (fig. 1). Year-to-date recoverable mine output was 390,000 t, essentially unchanged compared with that through April 2020 (table 2).

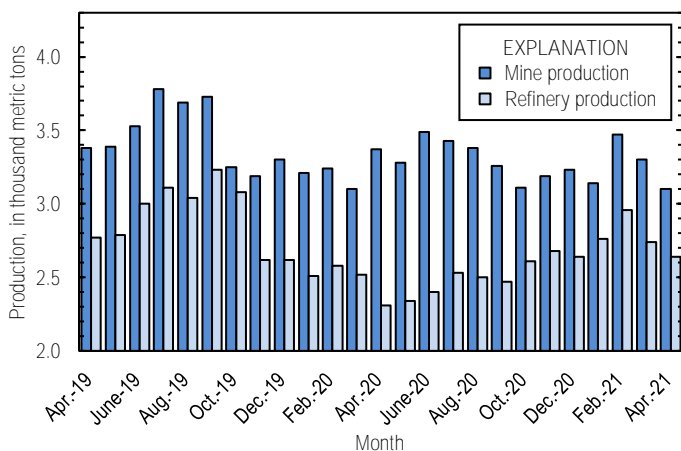


Figure 1. Average daily U.S. copper mine (recoverable) and refinery (primary and secondary) production from April 2019 through April 2021. Refinery production in November and December 2019 were withheld to avoid disclosing company proprietary data; the values shown reflect the daily average for cumulative production over this period rather than production in each month.

Owing to temporary closures of ASARCO LLC's smelter in Arizona and electrolytic refinery in Texas, smelter and electrolytic refinery production reported to the U.S. Geological Survey in April 2021 were withheld to avoid disclosing company proprietary data. Smelter and electrolytic refinery output in tables 3 and 4 are estimates based on information in quarterly company reports. The facilities shut down in October 2019 because of a worker strike, which reportedly ended in July 2020 (Wichner, 2021). As of April 2021, ASARCO had not announced when operations were expected to resume or a

reason for the continued closures. The three ASARCO mines in Arizona have continued to operate during the smelter and refinery stoppages.

Estimated U.S. smelter production was 30,000 t in April 2021. Year-to-date estimated smelter production was 135,000 t, 23% higher than that through April 2020 (table 3).

Total refinery production in the United States was 79,300 t in April 2021; data for electrolytic and electrowon output, as well as refined production from scrap, are reported in table 4.

Average daily total refinery production was 2,640 t, a decrease of 4% from that in March and 15% more than that in April 2020 (fig. 1). Year-to-date refinery output was 333,000 t, an increase of 11% relative to the same period in 2020 (table 4).

Prices

In April 2021, the COMEX spot copper price rose for the twelfth consecutive month and averaged \$4.25 per pound, an increase of 4% from \$4.09 per pound in March and 84% higher than \$2.31 per pound in April 2020 (fig. 2, table 11). The average U.S. dealers buying price of number 2 copper scrap in April 2021 was \$2.89 per pound, a decrease of 3% compared with \$2.97 per pound in March and 95% greater than \$1.48 per pound in April 2020 (fig. 2, table 12).

Stocks

Refined copper stocks in the United States totaled 102,000 t at the end of April 2021, a decline of 6% from those in March and 15% lower than those in April 2020. COMEX stocks fell by 5,270 t (8%), and London Metal Exchange Ltd. stocks in U.S. warehouses decreased by 900 t (8%) compared with those at the end of April (fig. 3, table 10).

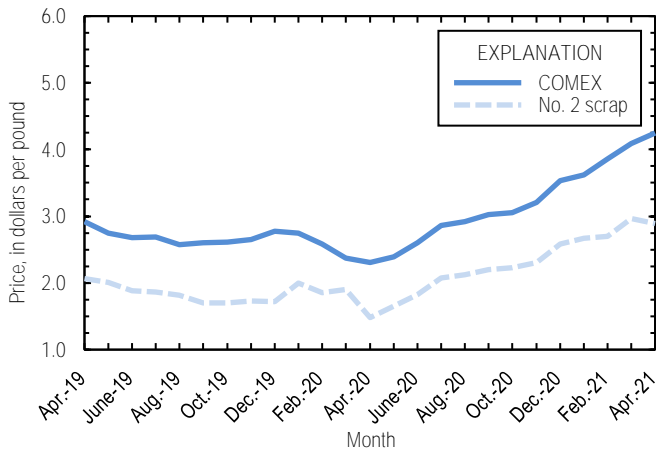


Figure 2. Monthly average COMEX copper price and no. 2 copper scrap dealers buying price from April 2019 through April 2021. As of January 2020, no. 2 prices were available only for the entire United States, whereas no. 2 prices were available only for individual domestic markets prior to January 2020. Prices shown prior to January 2020 are for New York dealers no. 2 scrap. Sources: Fastmarkets-AMM and S&P Global Platts Metals Week.

Reference Cited

Wichner, David, 2021, Tucson-based Asarco facing new charges over post-strike labor practices: Arizona Daily Star [Tucson, AZ], April 26. (Accessed May 14, 2021, at https://tucson.com/business/tucson-based-asarco-facing-new-charges-over-post-strike-labor-practices/article_ea8fb10c-a468-11eb-9063-3b0056bca30b.html.)

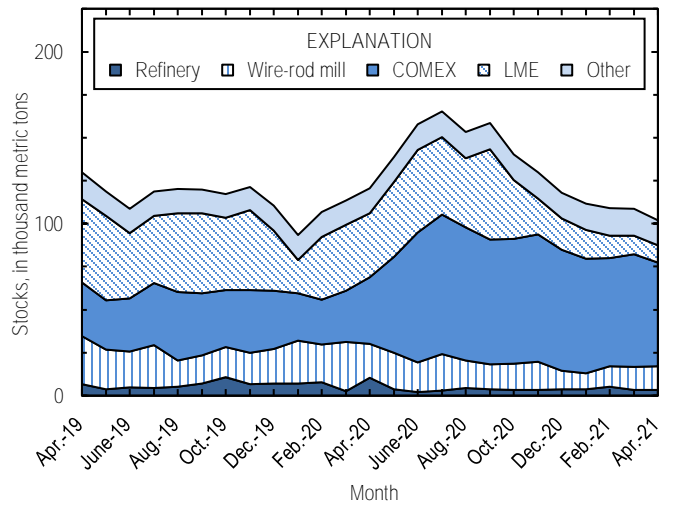


Figure 3. Domestic refined copper stocks at end of month, by type, from April 2019 through April 2021. Sources: Fastmarkets-AMM, London Metal Exchange Ltd., and U.S. Geological Survey.

List services and web feed subscribers are the first to receive notification of USGS minerals information publications and data releases. For information on how to subscribe, go to <https://www.usgs.gov/centers/nmic>.

TABLE 1
SALIENT STATISTICS OF THE COPPER INDUSTRY IN THE UNITED STATES¹

(Metric tons of copper content, unless otherwise specified)

	Source table ²	2020 ^p	2021			
			February	March	April	January– April
Production:						
Primary:						
Mine, recoverable	(2)	1,200,000	97,200	102,000	92,900	390,000
Smelter	(3)	315,000 ^c	35,000 ^c	35,000 ^c	30,000 ^c	135,000 ^c
Refinery:						
Electrolytic, domestic and foreign	(4)	315,000 ^c	35,000 ^c	35,000 ^c	30,000 ^c	135,000 ^c
Electrowon	(4)	559,000	43,900	46,500	44,100	182,000
Total	(4)	874,000	78,900	81,500	74,100	317,000
Secondary recoverable copper:³						
Refineries	(5)	43,200	4,060	3,460	5,190	16,000
Ingot makers ⁴	(5)	57,900	4,820	4,820	4,820	19,300
Brass and wire-rod mills	(5)	670,000	55,200	57,000	55,800	226,000
Foundries, etc. ⁴	(5)	36,700	3,060	3,060	3,060	12,200
Consumption:						
Apparent, primary refined and copper from old scrap	(8)	1,660,000	165,000	191,000 ^r	176,000	672,000
Reported, refined copper	(7)	1,710,000	137,000	159,000	148,000	578,000
Purchased copper-base scrap (gross weight)	(9)	938,000	81,800	85,900 ^r	85,100	339,000
Stocks at end of period:						
Total refined	(10)	118,000	109,000	109,000 ^r	102,000	102,000
Blister and anode	(10)	9,380	23,800	29,200	27,100	27,100
Price, U.S. producers cathode (cents per pound) ⁵	(11)	286.745	393.314	416.141	432.183	402.739
Imports:⁶						
Ore and concentrates	(13)	2,170	2,840	1,610	415	4,960
Refined	(13)	676,000	73,000	99,700	85,200	300,000
Exports:⁶						
Ore and concentrates	(14)	383,000	27,400	43,700	33,300	142,000
Refined	(14)	41,200	2,970	3,360	5,280	16,000

^cEstimated. ^pPreliminary. ^rRevised.

¹Data are rounded to no more than three significant digits, except prices; may not add to totals shown.

²Numbers in parentheses refer to the tables where these data are located.

³Copper recovered from copper-base scrap only.

⁴Estimated based on the monthly average of 2018 annual data.

⁵Source: S&P Global Platts Metals Week.

⁶Source: U.S. Census Bureau.

TABLE 2
MINE PRODUCTION OF RECOVERABLE COPPER IN THE UNITED STATES¹

(Metric tons)

Period	Recoverable copper			Contained copper		
	Arizona	Others ²	Total	Electrowon	Concentrates ³	Total
2020: ^P						
January–April	280,000	110,000	391,000	175,000	224,000	399,000
April	76,400	24,700	101,000	44,600	58,800	103,000
May	75,500	26,200	102,000	48,200	55,700	104,000
June	77,800	26,800	105,000	48,300	58,600	107,000
July	79,500	26,700	106,000	49,600	58,900	109,000
August	78,900	25,900	105,000	49,100	57,900	107,000
September	72,600	25,300	97,900	45,700	54,300	100,000
October	71,000	25,500	96,500	47,600	50,800	98,500
November	69,900	25,800	95,700	47,100	50,600	97,700
December	75,000	25,100	100,000	48,400	53,800	102,000
January–December	880,000	318,000	1,200,000	559,000	665,000	1,220,000
2021:						
January	71,600	25,900	97,500	47,100	52,500	99,600
February	70,500	26,700	97,200	43,900	55,400	99,300
March	73,900	28,500	102,000	46,500	58,100	105,000
April	63,900	28,900	92,900	44,100	59,400	103,000
January–April	280,000	110,000	390,000	182,000	225,000	407,000

^PPreliminary.

¹Data are rounded to no more than three significant digits; may not add to totals shown.

²Includes production from Michigan, Missouri, Montana, Nevada, New Mexico, and Utah.

³Includes copper content of precipitates and other metal concentrates.

TABLE 3
COPPER PRODUCED AT SMELTERS IN
THE UNITED STATES^{1,2}

(Metric tons, copper content)

Period	Anode production ^{e,3}
2020:^p	
January–April	110,000
April	20,000
May	20,000
June	20,000
July	25,000
August	25,000
September	25,000
October	30,000
November	30,000
December	30,000
January–December	315,000
2021:	
January	35,000
February	35,000
March	35,000
April	30,000
January–April	135,000

^eEstimated. ^pPreliminary.

¹Data are rounded to no more than three significant digits; may not add to totals shown.

²Includes blister and copper anode from primary or secondary sources.

³To avoid disclosing company proprietary data, monthly smelter production data are estimates based on information in quarterly public company reports and do not reflect actual production reported to the U.S. Geological Survey.

TABLE 4
U.S. PRODUCTION OF REFINED COPPER, BY SOURCE AND METHOD OF RECOVERY¹

(Metric tons)

Period	Primary materials			Scrap	Total refined
	Electrolytically refined ^{e, 2, 3}	Electrowon	Total		
2020:^P					
January–April	110,000	175,000	285,000	14,800	300,000
April	20,000	44,600	64,600	4,530	69,100
May	20,000	48,200	68,200	4,380	72,600
June	20,000	48,300	68,300	3,620	71,900
July	25,000	49,600	74,600	3,720	78,400
August	25,000	49,100	74,100	3,380	77,500
September	25,000	45,700	70,700	3,490	74,200
October	30,000	47,600	77,600	3,220	80,900
November	30,000	47,100	77,100	3,290	80,400
December	30,000	48,400	78,400	3,300	81,700
January–December	315,000	559,000	874,000	43,200	918,000
2021:					
January	35,000	47,100	82,100	3,350 ^r	85,400 ^r
February	35,000	43,900	78,900	4,060	82,900
March	35,000	46,500	81,500	3,460 ^r	85,000 ^r
April	30,000	44,100	74,100	5,190	79,300
January–April	135,000	182,000	317,000	16,000	333,000

^eEstimated. ^PPreliminary. ^rRevised.

¹Data are rounded to no more than three significant digits; may not add to totals shown.

²From domestic and foreign source materials.

³To avoid disclosing company proprietary data, monthly electrolytically refined production data are estimates based on information in quarterly public company reports and do not reflect actual production reported to the U.S. Geological Survey.

TABLE 5
COPPER RECOVERABLE IN UNALLOYED AND ALLOYED FORM FROM PURCHASED COPPER-BASE SCRAP
IN THE UNITED STATES¹

(Metric tons, copper content)

Period	Refineries ²		Ingot makers ³		Brass and wire-rod mills		Foundries, etc. ³		Total ⁴
	New scrap ^c	Old scrap	New scrap	Old scrap	New scrap	Old scrap	New scrap	Old scrap	
2020: ^p									
January–April	6,710	8,120	3,070	16,200	210,000	13,600	8,580	3,650	270,000
April	1,680	2,850	768	4,060	51,800	2,950	2,150	913	67,100
May	1,680	2,700	768	4,060	51,300	2,600	2,150	913	66,200
June	1,680	1,940	768	4,060	51,700	3,030	2,150	913	66,300
July	1,680	2,040	768	4,060	53,400	3,290	2,150	913	68,300
August	1,680	1,700	768	4,060	52,200	3,120	2,150	913	66,600
September	1,680	1,810	768	4,060	50,700	3,300	2,150	913	65,400
October	1,680	1,540	768	4,060	53,600	3,540	2,150	913	68,300
November	1,680	1,620	768	4,060	52,900	3,000	2,150	913	67,100
December	1,680	1,620	768	4,060	55,800	2,590	2,150	913	69,600
January–December	20,100	23,100	9,220	48,700	631,000	38,100	25,800	11,000	807,000
2021:									
January	1,680	1,670 ^r	768	4,060	53,700	4,110	2,150	913	69,000 ^r
February	1,680	2,380	768	4,060	51,700	3,500	2,150	913	67,100
March	1,680	1,780 ^r	768	4,060	53,100	3,870	2,150	913	68,300 ^r
April	1,680	3,510	768	4,060	51,900	3,870	2,150	913	68,900
January–April	6,710	9,340	3,070	16,200	210,000	15,400	8,580	3,650	273,000

^cEstimated. ^pPreliminary. ^rRevised.

¹Data are rounded to no more than three significant digits; may not add to totals shown.

²Electrolytically refined and fire refined from scrap based on source of material at smelter or refinery level.

³Monthly data estimated based on the monthly average of 2018 annual data.

⁴Does not include an estimate, based on reported 2018 annual data, of 3,380 tons per month from new scrap and 2,710 tons per month from old scrap of copper recovered from scrap other than copper-base.

TABLE 6
U.S. PRODUCTION, SHIPMENTS, AND STOCKS OF BRASS AND WIRE-ROD SEMIFABRICATES¹

(Metric tons, gross weight)

Period	Production		Shipments		Stocks, end of period	
	Brass mills	Wire-rod mills	Brass mills	Wire-rod mills	Brass mills	Wire-rod mills
2020: ^P						
January–April	295,000	421,000	295,000	419,000	29,000	26,100
April	72,500	94,600	73,500	96,200	29,000	26,100
May	73,400	95,300	73,400	91,400	29,000	30,000
June	73,700	89,400	73,600	96,100	29,200	23,400
July	73,500	108,000	73,300	104,000	29,300	27,000
August	73,700	104,000	73,600	111,000	29,400	20,000
September	73,800	107,000	73,700	108,000	29,500	18,600
October	74,400	108,000	74,900	110,000	29,000	16,400
November	73,600	106,000	73,600	106,000	29,000	16,000
December	73,700	101,000	74,000	97,800	28,700	19,000
January–December	884,000	1,240,000	885,000	1,240,000	28,700	19,000
2021:						
January	73,600	104,000	74,000	106,000	28,300	16,800
February	74,100	96,600	73,800	97,600	28,600	15,800
March	86,800 ^r	125,000 ^r	86,700 ^r	122,000 ^r	33,800 ^r	17,800 ^r
April	75,000	111,000	75,300	113,000	28,500	15,000
January–April	310,000	436,000	310,000	439,000	28,500	15,000

^PPreliminary. ^rRevised.

¹Data are rounded to no more than three significant digits; may not add to totals shown.

TABLE 7
U.S. CONSUMPTION OF REFINED COPPER¹

(Metric tons)

Period	Brass mills	Wire-rod mills	Other plants ²	Total
2020: ^P				
January–April	136,000	418,000	21,800	576,000
April	34,500	102,000	5,450	142,000
May	34,100	94,500	5,450	134,000
June	34,700	88,200	5,450	128,000
July	34,300	107,000	5,450	147,000
August	34,700	103,000	5,450	143,000
September	34,600	106,000	5,450	146,000
October	34,600	106,000	5,450	147,000
November	34,600	105,000	5,450	145,000
December	34,800	99,900	5,450	140,000
January–December	413,000	1,230,000	65,400	1,710,000
2021:				
January	34,700	93,400	5,450	134,000
February	34,900	96,100	5,450	137,000
March	35,300	119,000	5,450	159,000
April	34,300	109,000	5,450	148,000
January–April	139,000	417,000	21,800	578,000

^PPreliminary.

¹Data are rounded to no more than three significant digits; may not add to totals shown.

²Monthly consumption data by ingot makers, chemical plants, foundries, and miscellaneous manufacturers are estimated based on the monthly average of 2018 annual data.

TABLE 8
U.S. APPARENT CONSUMPTION OF COPPER¹

(Metric tons)

Period	Primary refined copper production	Copper in old scrap ²	Refined imports for consumption ³	Refined exports ³	Stock change during period	Apparent consumption
2020: ^p						
January–April	285,000	52,500	241,000	11,900	9,760	557,000
April	64,600	13,500	74,900	1,550	6,790	145,000
May	68,200	13,000	66,200	540	18,600	128,000
June	68,300	12,700	63,300	1,220	18,900	124,000
July	74,600	13,000	37,300	5,300	7,430	112,000
August	74,100	12,500	59,800	6,470	-12,100	152,000
September	70,700	12,800	39,900	4,570	5,410	113,000
October	77,600	12,800	57,300	2,930	-18,100	163,000
November	77,100	12,300	53,300	3,090	-10,800	150,000
December	78,400	11,900	57,400	5,150	-11,700	154,000
January–December	874,000	153,000	676,000	41,200	7,370	1,660,000
2021:						
January	82,100	13,500 ^r	42,400	4,350	-6,490	140,000
February	78,900	13,600	73,000	2,970	-2,600	165,000
March	81,500	13,300 ^r	99,700	3,360	-178	191,000 ^r
April	74,100	15,100	85,200	5,280	-6,590	176,000
January–April	317,000	55,400	300,000	16,000	-15,900	672,000

^pPreliminary. ^rRevised.

¹Data are rounded to no more than three significant digits; may not add to totals shown.

²Copper recovered from old scrap and converted to refined metal and alloys. Includes reported monthly production of copper from old scrap of copper-base, an estimate for annual reporters, and a monthly average of copper from non-copper-base materials based on 2018 annual data.

³Source: U.S. Census Bureau.

TABLE 9
U.S. CONSUMPTION OF PURCHASED COPPER-BASE SCRAP¹

(Metric tons, gross weight)

Period	Smelters and refineries		Ingot makers ²		Brass and wire-rod mills ³		Foundries, etc. ²		Total scrap used
	New scrap ^c	Old scrap	New scrap	Old scrap	New scrap	Old scrap	New scrap	Old scrap	
2020: ^p									
January–April	6,920	8,370	8,210	19,200	242,000	14,500	10,300	4,030	314,000
April	1,730	2,940	2,050	4,790	59,900	3,150	2,570	1,010	78,100
May	1,730	2,790	2,050	4,790	59,500	2,760	2,570	1,010	77,200
June	1,730	2,000	2,050	4,790	59,800	3,160	2,570	1,010	77,100
July	1,730	2,100	2,050	4,790	61,400	3,340	2,570	1,010	79,000
August	1,730	1,750	2,050	4,790	60,200	3,200	2,570	1,010	77,300
September	1,730	1,870	2,050	4,790	58,700	3,410	2,570	1,010	76,100
October	1,730	1,590	2,050	4,790	61,700	3,710	2,570	1,010	79,200
November	1,730	1,670	2,050	4,790	60,900	3,130	2,570	1,010	77,900
December	1,730	1,670	2,050	4,790	64,000	2,750	2,570	1,010	80,500
January–December	20,700	23,800	24,600	57,500	729,000	39,900	30,800	12,100	938,000
2021:									
January	1,730	1,720 ^r	2,050	4,790	68,000	4,190	2,570	1,010	86,000 ^r
February	1,730	2,460	2,050	4,790	63,600	3,580	2,570	1,010	81,800
March	1,730	1,830 ^r	2,050	4,790	68,000	3,970	2,570	1,010	85,900 ^r
April	1,730	3,620	2,050	4,790	65,300	4,010	2,570	1,010	85,100
January–April	6,920	9,630	8,210	19,200	265,000	15,700	10,300	4,030	339,000

^cEstimated. ^pPreliminary. ^rRevised.

¹Data are rounded to no more than three significant digits; may not add to totals shown.

²Monthly data estimated based on the monthly average of 2018 annual data.

³Consumption at brass and wire-rod mills assumed equal to receipts.

TABLE 10
COPPER STOCKS IN THE UNITED STATES AT END OF PERIOD¹

(Metric tons)

Period	Blister and anode ²	Refined copper					LME ⁴	Total refined
		Refineries	Wire-rod mills	Brass mills	Other ³	Comex		
2020: ^p								
April	7,430	10,300	19,900	7,210	7,070	38,700	37,200	120,000
May	11,900	3,550	21,200	7,730	7,070	55,900	43,500	139,000
June	11,000	2,070	17,200	7,900	7,070	75,600	48,000	158,000
July	11,300	3,090	21,200	7,770	7,070	81,000	45,200	165,000
August	15,700	4,490	15,900	8,210	7,070	77,400	40,200	153,000
September	13,500	3,730	14,500	8,200	7,070	72,400	52,700	159,000
October	15,200	3,460	15,300	8,170	7,070	72,500	34,000	140,000
November	12,500	3,420	16,200	8,100	7,070	74,000	20,900	130,000
December	9,380	3,850	10,700	7,850	7,070	70,200	18,300	118,000
2021:								
January	17,400 ^r	3,810	9,190	7,970	7,070	66,800	16,700	111,000
February	23,800	5,310	11,900	8,610	7,070	62,900	13,100	109,000
March	29,200	3,470	13,200	8,570 ^r	7,070	65,500	10,900	109,000 ^r
April	27,100	3,360	13,900	7,550	7,070	60,200	9,950	102,000

^pPreliminary. ^rRevised.

¹Data are rounded to no more than three significant digits; may not add to totals shown.

²Copper content.

³Monthly estimates based on 2018 annual data, comprising stocks at ingot makers, chemical plants, foundries, and miscellaneous manufacturers.

⁴London Metal Exchange Ltd., U.S. warehouses.

TABLE 11
AVERAGE PRICE OF COPPER IN THE UNITED STATES
AND ON THE LONDON METAL EXCHANGE

(Cents per pound)

Period	U.S. producers cathode ¹	Comex first position ²	LME cash price Grade A
2020:			
April	236.881	230.631	228.985
May	245.090	238.715	237.402
June	266.305	259.805	260.470
July	293.300	286.600	288.202
August	298.377	291.752	294.685
September	309.052	302.302	304.470
October	312.495	305.695	304.033
November	327.338	320.338	320.392
December	360.470	353.470	351.772
Year	286.745	279.948	279.797
2021:			
January	369.318	362.318	361.536
February	393.314	386.126	383.750
March	416.141	408.828	408.459
April	432.183	424.783	423.453
January–April	402.739	395.514	394.300

¹Sum of “Comex high grade first position” and “NY dealer premium cathode.”

²Listed as “Comex high grade first position.”

Source: S&P Global Platts Metals Week.

TABLE 12
 AVERAGE BUYING PRICES FOR COPPER SCRAP IN THE UNITED STATES

(Cents per pound)

Period	Brass mills No. 1 scrap	Refiners No. 2 scrap	Dealers (United States)	
			No. 2 scrap	Red brass turnings and borings
2020:				
April	219.33	196.05	148.00	125.00
May	230.18	208.95	165.00	111.00
June	253.82	232.41	182.09	120.55
July	279.55	258.32	207.09	130.00
August	282.05	258.79	212.52	124.76
September	291.05	262.19	220.00	128.86
October	291.93	261.84	222.73	130.00
November	306.26	277.53	230.00	139.47
December	339.98	314.75	258.18	165.45
Year	268.76	243.47	201.72	130.67
2021:				
January	349.74	320.61	266.50	167.00
February	370.89	338.87	270.00	175.00
March	392.04	351.52	296.50	185.50
April	406.52	365.52	289.00	186.50
January–April	379.80	344.13	280.50	178.50

Source: Fastmarkets-AMM.

U.S. IMPORTS FOR CONSUMPTION OF COPPER (UNMANUFACTURED), BY CLASS¹

(Metric tons, copper content)

Country or locality	Ore and concentrates ²			Matte, ash, and precipitates ³			Blister and anodes ⁴			Refined ⁵		
	2021			2021			2021			2021		
	2020	April	January–April	2020	April	January–April	2020	April	January–April	2020	April	January–April
Bahrain	--	--	--	--	--	--	--	--	--	76	--	--
Belgium	--	--	--	354	--	--	--	--	--	--	--	--
Bolivia	--	--	--	--	--	--	--	--	--	1,030	192	384
Canada	2,170	406	4,950	459	71	193	(6)	--	(6)	149,000	11,400	51,300
Chile	--	--	--	--	--	--	--	--	--	410,000	62,500	208,000
China	--	--	--	(6)	--	--	--	--	--	426	61	262
Congo (Kinshasa)	--	--	--	--	--	--	--	--	--	148	2,130	2,130
Finland	--	--	--	--	--	--	275	48	109	--	17	35
Germany	--	--	--	--	--	102	(6)	--	(6)	1,910	68	512
Japan	--	--	(6)	176	--	48	(6)	(6)	(6)	2,060	88	432
Korea, Republic of	--	--	--	--	--	--	(6)	--	(6)	72	2	21
Mexico	--	--	--	(6)	(6)	7	(6)	--	--	95,200	6,070	26,500
Peru	--	--	--	--	--	--	--	--	--	14,500	847	6,010
Spain	--	--	--	49	--	--	--	--	--	654	--	--
Other	--	10	10	22	3	24	5	1	6	50	1,780	4,970
Total	2,170	415	4,960	1,060	73	374	281	48	116	676,000	85,200	300,000

-- Zero.

¹Data are rounded to no more than three significant digits; may not add to totals shown.

²Harmonized Tariff Schedule of the United States (HTS) code 2603.00.0010. Includes copper ore and concentrates only; excludes copper contained in ore and concentrates of other metals.

³HTS codes 2620.30.0010 and 7401.00.0000. Includes copper matte, ash, and precipitates only; excludes the copper content of mattes and ashes of other metals.

⁴HTS code 7402.00.0000.

⁵HTS codes 7403.11.0000, 7403.12.0000, 7403.13.0000, and 7403.19.0000.

⁶Less than ½ unit.

Source: U.S. Census Bureau.

TABLE 14
U.S. EXPORTS OF COPPER (UNMANUFACTURED), BY CLASS¹

(Metric tons, copper content)

Country or locality	Ore and concentrates ²			Matte, ash, and precipitates ³			Blister and anodes ⁴			Refined ⁵		
	2021		January– April	2021		January– April	2021		January– April	2021		January– April
	2020	April		2020	April		2020	April		2020	April	
Belgium	230	35	93	6,110	370	1,450	190	312	689	64	--	--
Bulgaria	4,350	--	--	(6)	--	--	--	--	--	--	--	--
Canada	36,100	2,960	12,800	13,100	821	5,990	1,690	4,050	4,490	12,600	4,270	8,230
China	49,300	4,110	18,300	62	50	92	148	41	41	233	13	991
Germany	--	783	784	288	46	179	128	26	68	22	--	20
Hong Kong	9	--	2	--	--	--	86	2	35	18	--	--
India	20	--	--	37	--	29	247	20	93	--	--	--
Italy	--	--	--	--	--	--	197	1	27	86	--	2
Japan	14,600	--	--	251	20	251	24	15	16	4	1	6
Korea, Republic of	8,140	--	2,340	1	--	81	1,390	76	524	1,160	4	17
Malaysia	--	--	--	3	41	41	218	20	60	--	--	--
Mexico	250,000	24,600	106,000	2,720	5	29	848	9	39	26,800	910	6,420
Philippines	6,250	--	--	--	--	(6)	10	--	10	--	--	--
Singapore	--	--	--	256	25	25	36	10	20	13	--	7
Slovakia	--	--	--	1,050	137	412	--	--	--	--	--	--
Spain	8,990	--	--	1,820	156	510	35	20	20	--	--	--
Sweden	--	--	--	--	--	--	135	--	72	--	--	--
Thailand	--	--	--	2	--	--	256	--	11	(6)	--	--
Other	4,630	802	1,700	172	20	149	565	202	361	164	81	269
Total	383,000	33,300	142,000	25,900	1,690	9,240	6,210	4,800	6,580	41,200	5,280	16,000

-- Zero.

¹Data are rounded to no more than three significant digits; may not add to totals shown.

²Schedule B of the United States code 2603.00.0010. Includes copper ore and concentrates only; excludes copper contained in ore and concentrates of other metals.

³Schedule B codes 2620.30.0000, 7401.00.0010, and 7401.00.0050. Includes copper matte, ash, and precipitates only; excludes the copper content of mattes and ashes of other metals.

⁴Schedule B code 7402.00.0000.

⁵Schedule B codes 7403.11.0000, 7403.12.0000, 7403.13.0000, and 7403.19.0000.

⁶Less than ½ unit.

Source: U.S. Census Bureau.

TABLE 15
U.S. IMPORTS FOR CONSUMPTION OF COPPER SCRAP¹

(Metric tons, gross weight)

Country or locality	Unalloyed ²			Alloyed ³		
	2020	2021		2020	2021	
		April	January–April		April	January–April
Antigua and Barbuda	--	--	--	151	21	49
Bahamas	--	--	--	681	48	236
Brazil	--	--	--	164	14	51
Canada	14,500	1,860	5,690	41,300	4,150	16,000
Cayman Islands	4	--	--	262	11	84
Colombia	60	40	40	808	61	234
Costa Rica	619	38	246	934	93	570
Dominican Republic	876	122	425	1,150	196	716
Ecuador	--	16	16	154	43	82
El Salvador	--	--	--	294	29	222
Germany	179	12	60	108	40	93
Guatemala	--	--	--	289	19	181
Honduras	54	7	36	844	79	343
Jamaica	--	--	4	258	--	54
Mexico	9,450	955	3,600	37,100	3,700	14,600
Nicaragua	114	--	--	--	--	--
Panama	714	113	302	335	44	141
Peru	495	--	--	251	20	119
Vietnam	121	15	50	22	8	13
Other	362	169	250	1,400	136	712
Total	27,600	3,350	10,700	86,500	8,710	34,500

-- Zero.

¹Data are rounded to no more than three significant digits; may not add to totals shown.

²Harmonized Tariff Schedule of the United States (HTS) codes 7404.00.3020 and 7404.00.6020.

³HTS codes 7404.00.3045, 7404.00.3055, 7404.00.3065, 7404.00.3090, 7404.00.6045, 7404.00.6055, 7404.00.6065, and 7404.00.6090.

Source: U.S. Census Bureau.

TABLE 16
U.S. EXPORTS OF COPPER SCRAP¹

(Metric tons, gross weight)

Country or locality	Unalloyed ²							Alloyed ³				
	2020	2021						2020	2021			
		No. 1		No. 2		Other			Segregated		Unsegregated	
		April	January– April	April	January– April	April	January– April		April	January– April	April	January– April
Austria	3,970	--	--	39	602	--	--	1,010	--	--	--	--
Belgium	20,900	807	2,110	673	2,340	222	1,290	11,100	94	485	650	2,210
Canada	51,800	--	--	--	--	5,080	19,100	32,200	--	--	3,970	15,700
China	81,200	3,070	10,800	3,870	13,000	6,850	26,900	35,400	1,550	5,030	2,670	8,250
Germany	22,400	1,350	4,510	153	1,140	482	1,310	16,000	136	377	1,120	3,940
Greece	13,000	674	2,700	234	865	432	1,610	1,450	--	58	188	506
Hong Kong	7,810	354	1,000	1,090	2,480	997	2,540	7,750	141	769	356	1,360
India	9,570	238	852	119	382	253	941	34,800	1,000	4,110	1,420	5,620
Japan	16,400	195	915	853	3,460	235	603	13,800	140	435	283	1,960
Korea, Republic of	45,700	1,590	7,150	955	4,860	1,990	5,620	18,500	327	1,470	773	3,580
Malaysia	54,400	493	2,210	1,000	5,320	4,550	18,000	122,000	1,660	8,620	5,480	25,400
Pakistan	697	--	3	--	37	--	--	14,500	20	20	1,220	5,660
Poland	5,000	235	293	176	606	123	1,690	6,570	--	59	380	1,780
Russia	7,310	--	113	--	100	512	819	830	--	--	10	491
Spain	4,070	3	51	20	45	279	705	7,610	237	730	227	1,200
Taiwan	17,000	391	1,860	300	918	243	1,370	16,400	102	752	363	1,150
Thailand	4,800	187	395	2	156	349	1,550	20,900	68	583	4,200	10,700
Vietnam	7,480	98	192	--	99	--	196	2,340	--	37	--	62
Other	22,900	725	3,390	148	1,100	956	2,830	16,600	317	1,650	777	3,990
Total	396,000	10,400	38,600	9,640	37,500	23,500	87,000	380,000	5,790	25,200	24,100	93,600

-- Zero.

¹Data are rounded to no more than three significant digits; may not add to totals shown.

²Schedule B of the United States codes 7404.00.0010 and 7404.00.0015 (no. 1), 7404.00.0025 (no. 2), and 7404.00.0030 (other).

³Schedule B codes for segregated alloyed copper scrap are 7404.00.0041, 7404.00.0046, 7404.00.0051, 7404.00.0056, 7404.00.0061, 7404.00.0066, and 7404.00.0075. Schedule B codes for unsegregated alloyed copper scrap are 7404.00.0085 and 7404.00.0095.

Source: U.S. Census Bureau.